

☒ AMENDED REPORT

WELL LOCATION AND ACREAGE DEDICATION PLAT

¹ API Number 30-025-44249		² Pool Code 41040	³ Pool Name LOVINGTON; WOLFCAMP	
⁴ Property Code 320137	⁵ Property Name STATE 27 34 D			⁶ Well Number 27 34 D 001H
⁷ OGRID No. 372548	⁸ Operator Name CONTINENTAL RESOURCES, INC.			⁹ Elevation 3,894'

¹⁰ Surface Location

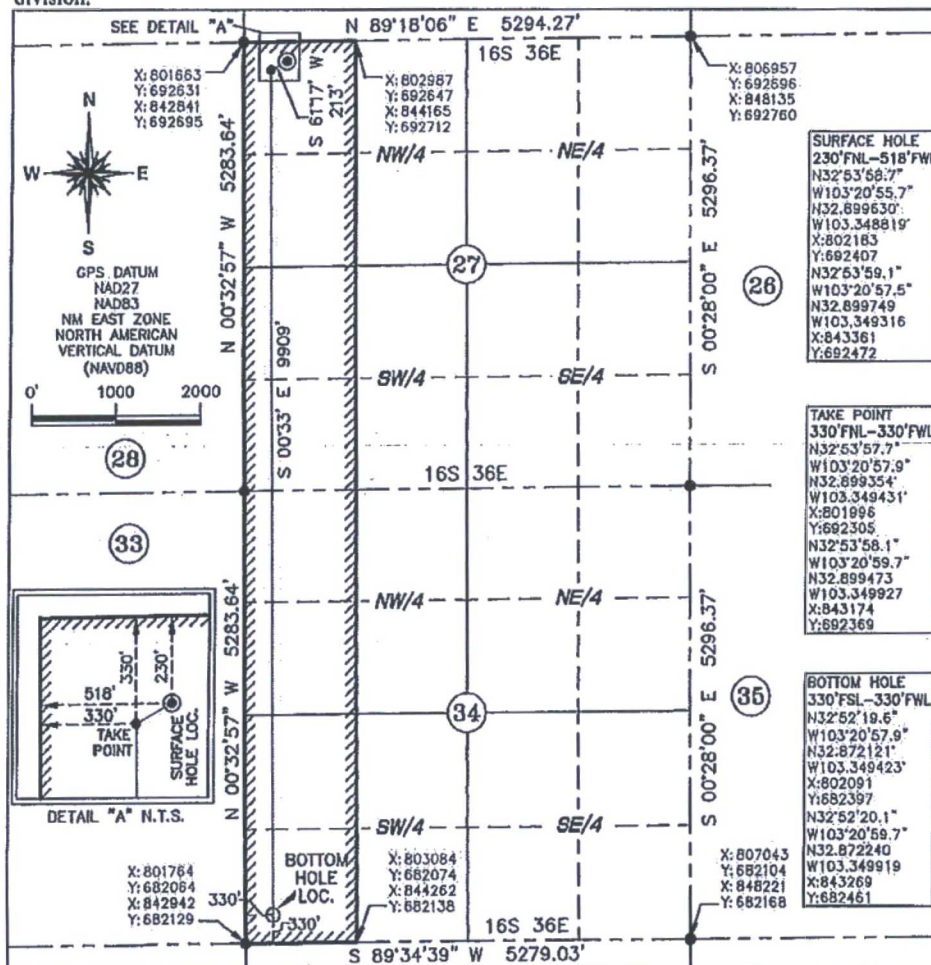
UL or lot no. D	Section 27	Township 16-S	Range 36-E	Lot Idn	Feet from the 230'	North/South line NORTH	Feet from the 518'	East/West line WEST	County LEA
--------------------	---------------	------------------	---------------	---------	-----------------------	---------------------------	-----------------------	------------------------	---------------

" Bottom Hole Location If Different From Surface

UL or lot no. M	Section 34	Township 16-S	Range 36-E	Lot Idn	Feet from the 330'	North/South line SOUTH	Feet from the 330'	East/West line WEST	County LEA
--------------------	---------------	------------------	---------------	---------	-----------------------	---------------------------	-----------------------	------------------------	---------------

"Dedicated Acres 320	"Joint or Infill	"Consolidation Code	"Order No.
-------------------------	------------------	---------------------	------------

No allowable will be assigned to this completion until all interests have been consolidated or a non-standard unit has been approved by the division.



" OPERATOR CERTIFICATION

I hereby certify that the information contained herein is true and complete to the best of my knowledge and belief, and that this organization either owns a working interest or unworked mineral interest in the land including the proposed bottom hole location or has a right to drill this well at this location pursuant to a contract with an owner of such a mineral or working interest, or to a voluntary pooling agreement or a compulsory pooling order hereby entered by the division.

Paul R. White
Signature Date
Paul R. White 12-15-17
Printed Name

DAUL.white @ CLR.com
E-mail Address

"SURVEYOR CERTIFICATION

I hereby certify that the well location shown on this plat was plotted from field notes of actual surveys made by me or under my supervision, and that the same is true and correct to the best of my belief.

12/11/17

Signature and Seal of Professional Engineer

23110
Certificate Number

