

District I
1625 N. French Dr., Hobbs, NM 88240
Phone: (575) 393-6161 Fax: (575) 393-0720
District II
811 S. First St., Artesia, NM 88210
Phone: (575) 748-1283 Fax: (575) 748-9720
District III
1000 Rio Brazos Road, Aztec, NM 87410
Phone: (505) 334-6178 Fax: (505) 334-6170
District IV
1220 S. St. Francis Dr., Santa Fe, NM 87505
Phone: (505) 476-3460 Fax: (505) 476-3462

State of New Mexico
Energy, Minerals & Natural Resources Department
OIL CONSERVATION DIVISION
1220 South St. Francis Dr.
Santa Fe, NM 87505

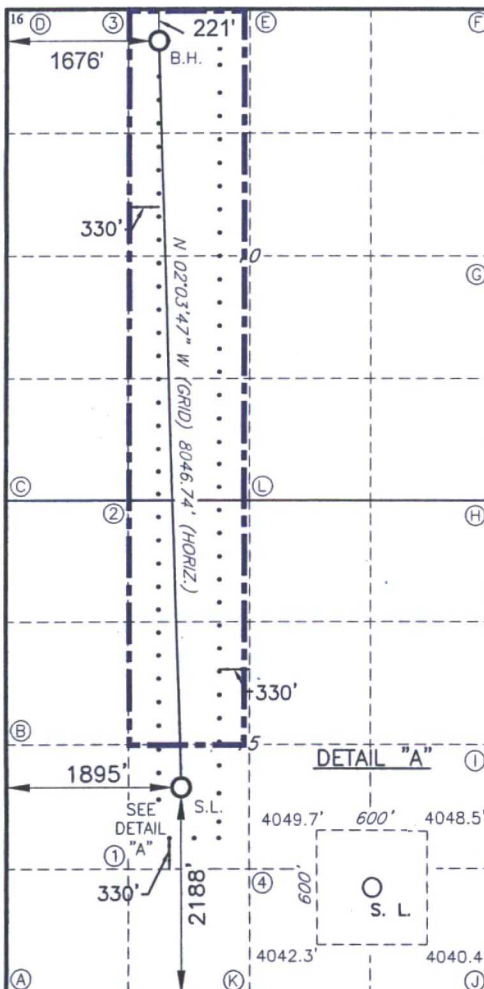
Form C-102
Revised August 1, 2011
Submit one copy to appropriate
District Office

☐ AMENDED REPORT

WELL LOCATION AND ACREAGE DEDICATION PLAT

¹ API Number 30-025-43706		² Pool Code 44500		³ Pool Name Maljamar, Yeso, West					
⁴ Property Code 317557		⁵ Property Name NELSON FEDERAL COM						⁶ Well Number 23H	
⁷ OGRID NO. 229137		⁸ Operator Name COG OPERATING, LLC						⁹ Elevation 4044'	
¹⁰ Surface Location									
UL or lot no. K	Section 15	Township 17S	Range 32E	Lot Idn	Feet from the 2188	North/South line SOUTH	Feet From the 1895	East/West line WEST	County LEA
¹¹ Bottom Hole Location If Different From Surface									
UL or lot no. C	Section 10	Township 17S	Range 32E	Lot Idn	Feet from the 221	North/South line NORTH	Feet from the 1676	East/West line WEST	County LEA
¹² Dedicated Acres 240		¹³ Joint or Infill		¹⁴ Consolidation Code		¹⁵ Order No.			

No allowable will be assigned to this completion until all interest have been consolidated or a non-standard unit has been approved by the division.



GEODETIC DATA
NAD 83 GRID - NM EAST

SURFACE LOCATION
N 667394.6 - E 718457.5
LAT: 32.83336551° N
LONG: 103.75668381° W

BOTTOM HOLE
N 675434.3 - E 718167.8
LAT: 32.85546703° N
LONG: 103.75748423° W

CORNER DATA
NAD 83 GRID - NM EAST

A: FOUND 1" NAIL
N 665199.7 - E 716576.6

1: CALCULATED POINT
N 666525.5 - E 717884.9

B: FOUND 2" IRON PIPE
N 667841.6 - E 716560.2

2: CALCULATED POINT
N 670487.1 - E 717864.2

C: FOUND BRASS CAP "1913"
N 670479.9 - E 716544.7

3: CALCULATED POINT
N 675763.9 - E 717833.6

D: CALCULATED CORNER
N 675762.5 - E 716516.5

4: CALCULATED POINT
N 666530.3 - E 719201.4

E: FOUND BRASS CAP "1913"
N 675765.3 - E 719150.6

F: FOUND BRASS CAP "1913"
N 675771.1 - E 721786.3

G: FOUND BRASS CAP "1913"
N 673135.6 - E 721803.5

H: FOUND BRASS CAP "1913"
N 670497.8 - E 721816.9

I: FOUND BRASS CAP "1913"
N 667859.2 - E 721833.3

J: FOUND BRASS CAP "1913"
N 665220.0 - E 721849.6

K: FOUND BRASS CAP "1913"
N 665210.0 - E 719207.2

L: FOUND BRASS CAP "1913"
N 670494.5 - E 719183.8

17 OPERATOR CERTIFICATION
I hereby certify that the information contained herein is true and complete to the best of my knowledge and belief, and that this organization either owns a working interest or unleased mineral interest in the land including the proposed bottom hole location or has a right to drill this well at this location pursuant to a contract with an owner of such a mineral or working interest, or to a voluntary pooling agreement or a compulsory pooling order heretofore entered by the division.

[Signature] **10/18/17**
Signature Date
Kanicia Castillo
Printed Name
kcastillo@concho.com
E-mail Address

18 SURVEYOR CERTIFICATION
I hereby certify that the well location shown on this plat was plotted from field notes of actual surveys made by me or under my supervision, and that the same is true and correct to the best of my belief.

4-4-16
Date of Survey
Signature and Seal of Professional Surveyor
19680
Certificate Number

ROBERT M. HOWETT
NEW MEXICO
19680
PROFESSIONAL SURVEYOR