

F/F

ich Dr., Hobbs, NM 88240
) 393-6161 Fax: (575) 393-0720
)
 St., Artesia, NM 88210
) 748-1283 Fax: (575) 748-9720
)
 ozos Road, Aztec, NM 87410
) 334-6178 Fax: (505) 334-6170
)
 Francis Dr., Santa Fe, NM 87505
) 476-3460 Fax: (505) 476-3462

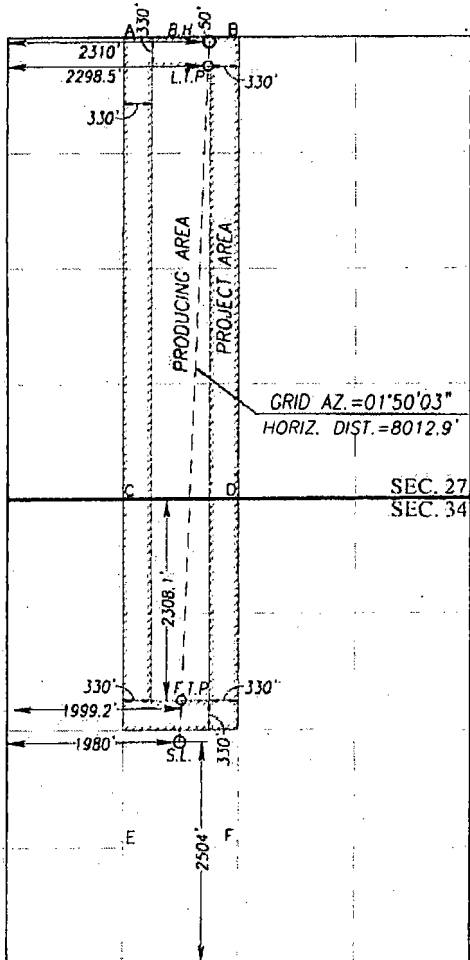
30-024 44297	98094	POPCAT DRAW; 4PA WOLF CAMP
720924	ROSO 7811 34 27 FEDERAL COM	18H
OGRID No. 260297	Operator Name BTA OIL PRODUCERS, LLC	Elevation 3323'

Surface Location									
UL or lot No.	Section	Township	Range	Lot Idn	Feet from the	North/South line	Feet from the	East/West line	County
K	34	25-S	33-E		2504	SOUTH	1980	WEST	LEA

Bottom Hole Location If Different From Surface									
UL or lot No.	Section	Township	Range	Lot Idn	Feet from the	North/South line	Feet from the	East/West line	County
C	27	25-S	33-E		50	NORTH	2310	WEST	LEA
Dedicated Acres 240	Joint or Infill	Consolidation Code	Order No.						

NO ALLOWABLE WILL BE ASSIGNED TO THIS COMPLETION UNTIL ALL INTERESTS HAVE BEEN CONSOLIDATED OR A NON-STANDARD UNIT HAS BEEN APPROVED BY THE DIVISION

SCALE: 1"=2000'



BOTTOM HOLE LOCATION
 NAD 27 NME
 Y= 404060.3 N
 X= 739182.7 E
 LAT.=32.108522° N
 LONG.=103.560862° W
 LAST TAKE POINT
 NAD 27 NME
 Y= 403780.2 N
 X= 739173.7 E
 LAT.=32.107752° N
 LONG.=103.560897° W
BOTTOM HOLE LOCATION
 NAD 83 NME
 Y= 404118.0 N
 X= 780369.0 E
 LAT.=32.108647° N
 LONG.=103.561333° W
 LAST TAKE POINT
 NAD 83 NME
 Y= 403838.0 N
 X= 780360.0 E
 LAT.=32.107877° N
 LONG.=103.561368° W

CORNER COORDINATES TABLE

NAD 27 NME
 A - Y= 404103.8 N, X= 738199.0 E
 B - Y= 404112.5 N, X= 739525.3 E
 C - Y= 398822.6 N, X= 738243.9 E
 D - Y= 398831.1 N, X= 739566.4 E
 E - Y= 394866.1 N, X= 738279.6 E
 F - Y= 394873.3 N, X= 739601.2 E

CORNER COORDINATES TABLE

NAD 83 NME
 A - Y= 404161.5 N, X= 779385.3 E
 B - Y= 404170.2 N, X= 780711.6 E
 C - Y= 398880.1 N, X= 779430.4 E
 D - Y= 398888.7 N, X= 780753.0 E
 E - Y= 394923.6 N, X= 779466.4 E
 F - Y= 394930.8 N, X= 780787.9 E

FIRST TAKE POINT
 NAD 27 NME
 Y= 396519.4 N
 X= 738940.9 E
 LAT.=32.087798° N
 LONG.=103.561817° W
FIRST TAKE POINT
 NAD 83 NME
 Y= 396576.9 N
 X= 780127.5 E
 LAT.=32.087923° N
 LONG.=103.562287° W

GEODETIC COORDINATES
 NAD 27 NME
 SURFACE LOCATION
 Y= 396053.1 N
 X= 738925.9 E
 LAT.=32.086517° N
 LONG.=103.561876° W
GEODETIC COORDINATES
 NAD 83 NME
 SURFACE LOCATION
 Y= 396110.6 N
 X= 780112.6 E
 LAT.=32.086642° N
 LONG.=103.562346° W

OPERATOR CERTIFICATION

I hereby certify that the information herein is true and complete to the best of my knowledge and belief, and that this organization either owns a working interest or unleased mineral interest in the land including the proposed bottom hole location or has a right to drill this well at this location pursuant to a contract with an owner of such mineral or working interest, or to a voluntary pooling agreement or a compulsory pooling order hereinafter entered by the division.

Kayla McConnell 4/28/17
 Signature Date
 Kayla McConnell
 Printed Name
 kmccconnell@btaoil.com
 E-mail Address

SURVEYOR CERTIFICATION

I hereby certify that the well location shown on this plat was plotted from field notes of actual surveys made by me or under my supervision, and that the same is true and correct to the best of my belief.

MARCH 8, 2017

Date of Survey
 Signature of Professional Surveyor

Ronald J. Eidson
 REGISTERED SURVEYOR
 NEW MEXICO
 3239
 Certificate Number
 Ronald J. Eidson 12641
 Ronald J. Eidson 3239

DSS JWSC W.O. 17.11.0184