

FIF

DISTRICT I
1625 N. French Dr., Hobbs, NM 88240
Phone: (505) 393-6161 Fax: (505) 393-7220
DISTRICT II
811 S. First St., Artesia, NM 88210
Phone: (505) 748-1283 Fax: (505) 748-9720
DISTRICT III
1000 Rio Brazos Road, Aztec, NM 87410
Phone: (505) 334-6178 Fax: (505) 334-6179
DISTRICT IV
1220 S. St. Francis Dr., Santa Fe, NM 87505
Phone: (505) 476-3460 Fax: (505) 476-3462

HOBBS OCD
DEC 26 2017
RECEIVED

State of New Mexico
Energy, Minerals & Natural Resources Department
OIL CONSERVATION DIVISION
1220 South St. Francis Dr.
Santa Fe, New Mexico 87505

Form C-102
Revised August 1, 2011
Submit one copy to appropriate
District Office

AMENDED REPORT

WELL LOCATION AND ACREAGE DEDICATION PLAT

API Number 70-025-44298	Pool Code 98094	Pool Name UPPER WOLFCAMP
Property Code 720924	Property Name ROJO 7811 34-27 FEDERAL COM	Well Number 19H
OGRID No. 260297	Operator Name BTA OIL PRODUCERS, LLC	Elevation 3323'

Surface Location

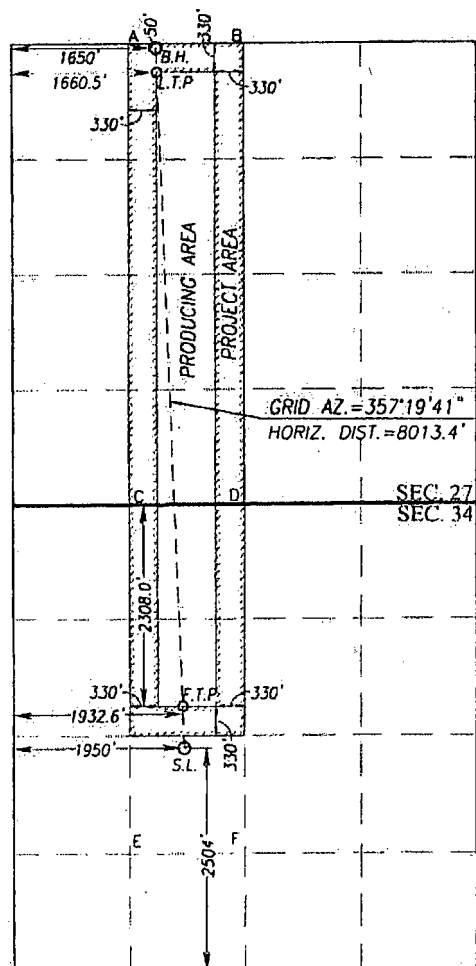
UL or lot No.	Section	Township	Range	Lot Idn	Feet from the	North/South line	Feet from the	East/West line	County
K	34	25-S	33-E		2504	SOUTH	1950	WEST	LEA

Bottom Hole Location If Different From Surface

UL or lot No.	Section	Township	Range	Lot Idn	Feet from the	North/South line	Feet from the	East/West line	County
C	27	25-S	33-E		50	NORTH	1650	WEST	LEA

Dedicated Acres	Joint or Infill	Consolidation Code	Order No.
240			

NO ALLOWABLE WILL BE ASSIGNED TO THIS COMPLETION UNTIL ALL INTERESTS HAVE BEEN CONSOLIDATED OR A NON-STANDARD UNIT HAS BEEN APPROVED BY THE DIVISION
SCALE: 1"=2000'



BOTTOM HOLE LOCATION
NAD 27 NME
Y= 404055.9 N
X= 738522.8 E
LAT.=32.108523° N
LONG.=103.562993° W
LAST TAKE POINT
NAD 27 NME
Y= 403776.0 N
X= 738535.9 E
LAT.=32.107753° N
LONG.=103.562957° W
BOTTOM HOLE LOCATION
NAD 83 NME
Y= 404113.6 N
X= 779709.1 E
LAT.=32.108648° N
LONG.=103.563464° W
LAST TAKE POINT
NAD 83 NME
Y= 403833.8 N
X= 779722.2 E
LAT.=32.107878° N
LONG.=103.563428° W

CORNER COORDINATES TABLE
NAD 27 NME

A - Y= 404103.8 N, X= 738199.0 E
B - Y= 404112.5 N, X= 739525.3 E
C - Y= 398822.6 N, X= 738243.9 E
D - Y= 398831.1 N, X= 739566.4 E
E - Y= 394866.1 N, X= 738279.6 E
F - Y= 394873.3 N, X= 739601.2 E

CORNER COORDINATES TABLE
NAD 83 NME

A - Y= 404161.5 N, X= 779385.3 E
B - Y= 404170.2 N, X= 780711.6 E
C - Y= 398880.1 N, X= 779430.4 E
D - Y= 398888.7 N, X= 780753.0 E
E - Y= 394923.6 N, X= 779466.4 E
F - Y= 394930.8 N, X= 780787.9 E

FIRST TAKE POINT
NAD 27 NME
Y= 396519.0 N
X= 738874.2 E
LAT.=32.087799° N
LONG.=103.562032° W

FIRST TAKE POINT
NAD 83 NME
Y= 396576.6 N
X= 780060.9 E
LAT.=32.087923° N
LONG.=103.562502° W

GEODETIC COORDINATES
NAD 27 NME
SURFACE LOCATION
Y= 396052.9 N
X= 738895.9 E
LAT.=32.086517° N
LONG.=103.561973° W

GEODETIC COORDINATES
NAD 83 NME
SURFACE LOCATION
Y= 396110.4 N
X= 780082.6 E
LAT.=32.086642° N
LONG.=103.562443° W

OPERATOR CERTIFICATION

I hereby certify that the information herein is true and complete to the best of my knowledge and belief, and that this organization either owns a working interest or unleased mineral interest in the land including the proposed bottom hole location or has a right to drill this well at this location pursuant to a contract with an owner of such mineral or working interest, or to a voluntary pooling agreement or a compulsory pooling order heretofore entered by the division.

Signature: **Kayla McConnell** Date: **4/28/17**
Printed Name: **Kayla McConnell**
E-mail Address: **kmccconnell@btaoil.com**

SURVEYOR CERTIFICATION

I hereby certify that the well location shown on this plat was plotted from field notes of actual surveys made by me or under my supervision, and that the same is true and correct to the best of my belief.

MARCH 8, 2017

Date of Survey: **March 8, 2017**
Signature: **Ronald J. Eidson**

Professional Surveyor

NEW MEXICO
3239
REGISTERED SURVEYOR

Certificate Number: **12641**
Signature: **Ronald J. Eidson**
DSS: **17110185**