

District I
1625 N. French Dr., Hobbs, NM 88240
Phone: (575) 393-6161 Fax: (575) 393-0720
District II
811 S. First St., Artesia, NM 88210
Phone: (575) 748-1283 Fax: (575) 748-9720
District III
1000 Rio Brazos Road, Aztec, NM 87410
Phone: (505) 334-6178 Fax: (505) 334-6170
District IV
1220 S. St. Francis Dr., Santa Fe, NM 87505
Phone: (505) 476-3460 Fax: (505) 476-3462

State of New Mexico
Energy, Minerals & Natural Resources Department
OIL CONSERVATION DIVISION
1220 South St. Francis Dr.
Santa Fe, NM 87505

Form C-102
Revised August 1, 2011
Submit one copy to appropriate
District Office

☐ AMENDED REPORT

WELL LOCATION AND ACREAGE DEDICATION PLAT

1 API Number 30-024-4390	2 Pool Code 96834	3 Pool Name RED HILL AS NORTH
Property Code 218022	4 Property Name PIRATE STATE	5 Well Number 101H
6 GRID No. 372165	7 Operator Name CENTENNIAL RESOURCE PRODUCTION, LLC	8 Elevation 3535.4'

11 Surface Location

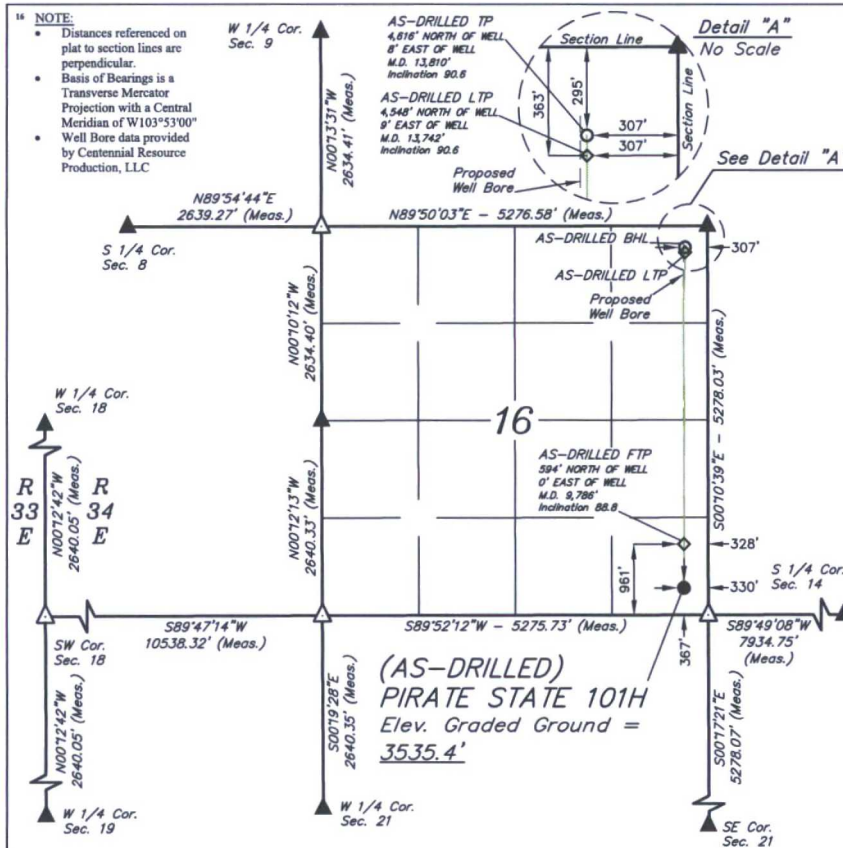
UL or lot no.	Section	Township	Range	Lot Idn	Feet from the	North/South line	Feet from the	East/West line	County
P	16	24S	34E		367	SOUTH	330	EAST	LEA

11 Bottom Hole Location If Different From Surface

UL or lot no.	Section	Township	Range	Lot Idn	Feet from the	North/South line	Feet from the	East/West line	County
A	16	24S	34E		295	NORTH	307	EAST	LEA

12 Dedicated Acres 160	13 Joint or Infill	14 Consolidation Code	15 Order No.
---------------------------	--------------------	-----------------------	--------------

No allowable will be assigned to this completion until all interests have been consolidated or a non-standard unit has been approved by the division.



17 OPERATOR
CERTIFICATION

I hereby certify that the information contained herein is true and complete to the best of my knowledge and belief, and that this organization either owns a working interest or unleased mineral interest in the land including the proposed bottom hole location or has a right to drill this well at this location pursuant to a contract with an owner of such a mineral or working interest, or to a voluntary pooling agreement or a compulsory pooling order heretofore entered by the division.

Digitally signed by Melissa Luke
DN: cn=Melissa Luke, o=US
Centennial Resource Production,
LLC, ou=Drilling, email=melissa.luke@cdevinc.com
Date: 2017.12.28 11:01:27 -0700

Melissa Luke
Printed Name
melissa.luke@cdevinc.com
E-mail Address

18 SURVEYOR
CERTIFICATION

I hereby certify that the well location shown on this plat was plotted from field notes of actual surveys made by me or under my supervision, and that the same is true and correct to the best of my belief.

NOVEMBER 30, 2017

Date of Survey
Signature and Seal of Professional Surveyor:



Certificate Number:



SCALE

DRAWN BY: C.D. 12-05-17
REV: 2 12-20-17 C.D.
(UPDATED WELL BORE)

- = SURFACE HOLE LOCATION
- ◇ = PP/FTP/LTP
- = BOTTOM HOLE LOCATION
- ▲ = SECTION CORNER LOCATED
- △ = SECTION CORNER RE-ESTABLISHED.
(Not Set on Ground.)

NAD 83 (AS-DRILLED SHL) LATITUDE = 32°12'40.69" (32.211303°) LONGITUDE = 103°28'02.85" (103.467457°) STATE PLANE NAD 83 (N.M. EAST) Y: 441684.78' X: 809133.84' UTM, NAD 83 (ZONE 13) Y: 11695800.81' X: 2114272.01'	NAD 83 (AS-DRILLED FTP) LATITUDE = 32°12'46.57" (32.212935°) LONGITUDE = 103°28'02.82" (103.467449°) STATE PLANE NAD 83 (N.M. EAST) Y: 442278.54' X: 809133.48' UTM, NAD 83 (ZONE 13) Y: 11696394.46' X: 2114265.96'
NAD 83 (AS-DRILLED LTP) LATITUDE = 32°13'25.69" (32.223802°) LONGITUDE = 103°28'02.54" (103.467371°) STATE PLANE NAD 83 (N.M. EAST) Y: 446232.10' X: 809125.80' UTM, NAD 83 (ZONE 13) Y: 11700347.36' X: 2114233.75'	NAD 83 (AS-DRILLED BHL) LATITUDE = 32°13'26.36" (32.223989°) LONGITUDE = 103°28'02.54" (103.467372°) STATE PLANE NAD 83 (N.M. EAST) Y: 446300.08' X: 809124.88' UTM, NAD 83 (ZONE 13) Y: 11700415.33' X: 2114232.41'