

DISTRICT I
1625 N. French Dr., Hobbs, NM 88240
Phone: (575) 393-6161 Fax: (575) 393-0720

DISTRICT II
811 S. First St., Artesia, NM 88210
Phone: (575) 748-1283 Fax: (575) 748-9720

DISTRICT III
1000 Rio Brazos Road, Aztec, NM 87410
Phone: (505) 334-6178 Fax: (505) 334-6170

DISTRICT IV
1220 S. St. Francis Dr., Santa Fe, NM 87505
Phone: (505) 476-3460 Fax: (505) 476-3462

State of New Mexico
Energy, Minerals & Natural Resources Department
OIL CONSERVATION DIVISION
1220 South St. Francis Dr.
Santa Fe, New Mexico 87505

Form C-102
Revised August 1, 2011
Submit one copy to appropriate
District Office

AMENDED REPORT

WELL LOCATION AND ACREAGE DEDICATION PLAT

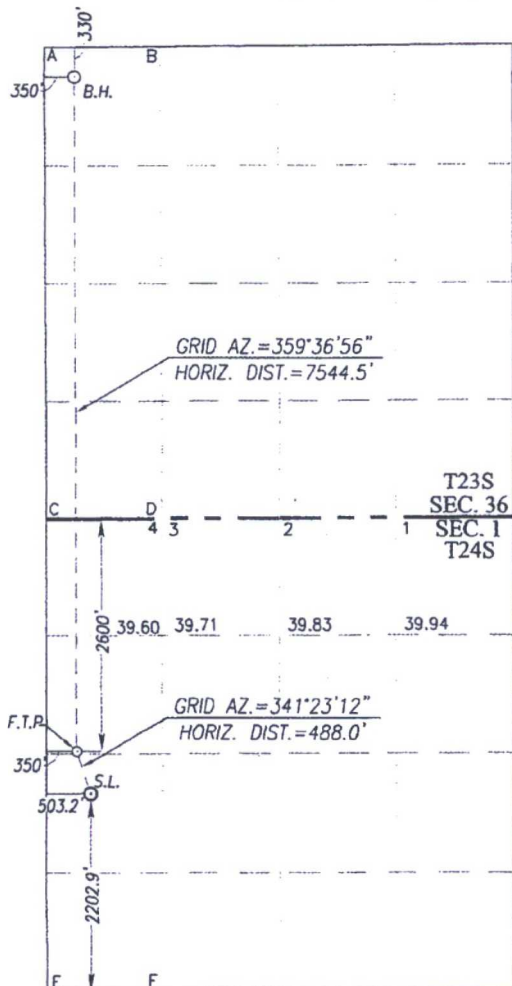
API Number 30-025-44020	Pool Code 5150	Pool Name Bell Lake; Bone Spring, North
Property Code 316706	Property Name BELL LAKE UNIT SOUTH	Well Number 219H
OGRID No. 12361	Operator Name KAISER-FRANCIS OIL COMPANY	Elevation 3632'

Surface Location									
UL or lot No.	Section	Township	Range	Lot Idn	Feet from the	North/South line	Feet from the	East/West line	County
L	1	24-S	33-E		2202.9	SOUTH	503.2	WEST	LEA

Bottom Hole Location If Different From Surface									
UL or lot No.	Section	Township	Range	Lot Idn	Feet from the	North/South line	Feet from the	East/West line	County
D	36	23-S	33-E		330	NORTH	350	WEST	LEA
Dedicated Acres 160	Joint or Infill	Consolidation Code	Order No.						

NO ALLOWABLE WILL BE ASSIGNED TO THIS COMPLETION UNTIL ALL INTERESTS HAVE BEEN CONSOLIDATED OR A NON-STANDARD UNIT HAS BEEN APPROVED BY THE DIVISION

SCALE: 1"=2000'



BOTTOM HOLE LOCATION
NAD 83 NME
Y= 461952.0 N
X= 788568.4 E
LAT.=32.267448° N
LONG.=103.533464° W

BOTTOM HOLE LOCATION
NAD 27 NME
Y= 461892.8 N
X= 747384.7 E
LAT.=32.267324° N
LONG.=103.532985° W

CORNER COORDINATES TABLE
NAD 27 NME
A - Y= 462219.8 N, X= 747032.5 E
B - Y= 462230.8 N, X= 748351.1 E
C - Y= 456947.4 N, X= 747071.8 E
D - Y= 456955.5 N, X= 748391.2 E
E - Y= 451683.5 N, X= 747099.7 E
F - Y= 451688.5 N, X= 748422.0 E

CORNER COORDINATES TABLE
NAD 83 NME
A - Y= 462279.1 N, X= 788216.1 E
B - Y= 462290.0 N, X= 789534.8 E
C - Y= 457006.5 N, X= 788255.6 E
D - Y= 457014.5 N, X= 789575.0 E
E - Y= 451742.4 N, X= 788283.7 E
F - Y= 451747.4 N, X= 789606.0 E

FIRST TAKE POINT
NAD 83 NME
Y= 454409.1 N
X= 788619.0 E
LAT.=32.246714° N
LONG.=103.533482° W

FIRST TAKE POINT
NAD 27 NME
Y= 454350.2 N
X= 747435.1 E
LAT.=32.246591° N
LONG.=103.533003° W

GEODETIC COORDINATES
NAD 83 NME
SURFACE LOCATION
Y= 453946.8 N
X= 788774.7 E
LAT.=32.245440° N
LONG.=103.532990° W

GEODETIC COORDINATES
NAD 27 NME
SURFACE LOCATION
Y= 453887.8 N
X= 747590.8 E
LAT.=32.245317° N
LONG.=103.532511° W

OPERATOR CERTIFICATION

I hereby certify that the information herein is true and complete to the best of my knowledge and belief, and that this organization either owns a working interest or unleased mineral interest in the land including the proposed bottom hole location or has a right to drill this well at this location pursuant to a contract with an owner of such mineral or working interest, or to a voluntary pooling agreement or a compulsory pooling order heretofore entered by the division.

Signature: *Charlotte Van Valkenburg*
Date: 1/4/18

Printed Name: Charlotte Van Valkenburg

E-mail Address: Charlotv@kfoc.net

SURVEYOR CERTIFICATION

I hereby certify that the well location shown on this plat was plotted from field notes of actual surveys made by me or under my supervision, and that the same is true and correct to the best of my belief.

NOVEMBER 2, 2017

Date of Survey: 1/4/18
Signature of Professional Surveyor: *Ronald J. Eidson*

Professional Surveyor: *Ronald J. Eidson*
Certificate Number: 3233
Date: 1/4/2018

ACK REV: 1/04/18 REL W.O.: 17131034 JWSC W.O.: 17.11.1058