

DISTRICT I
1625 N. French Dr., Hobbs, NM 88240
DISTRICT II
811 South First, Artesia, NM 88210
DISTRICT III
1000 Rio Brazos Rd., Aztec, NM 87410
DISTRICT IV
2040 South Pacheco, Santa Fe, NM 87505

AS-DRILLED PLAT
State of New Mexico
Energy, Minerals and Natural Resources Department

Form C-102
Revised August 1, 2011

OIL CONSERVATION DIVISION

1220 South St. Francis Dr.
Santa Fe, New Mexico 87505

HOBBS OCC
JAN 09 2018
RECEIVED

Submit one copy to Appropriate
District Office

☐ AMENDED REPORT

WELL LOCATION AND ACREAGE DEDICATION PLAT

API Number 30-025-43721	Pool Code 98098	Pool Name WC-025 G-09 S243532M, WOLFBONE
Property Code 317500	Property Name BRAHMAN STATE 24-35 15	Well Number 601H
OGRID No. 162928	Operator Name ENERGEN RESOURCES CORPORATION	Elevation 3363'

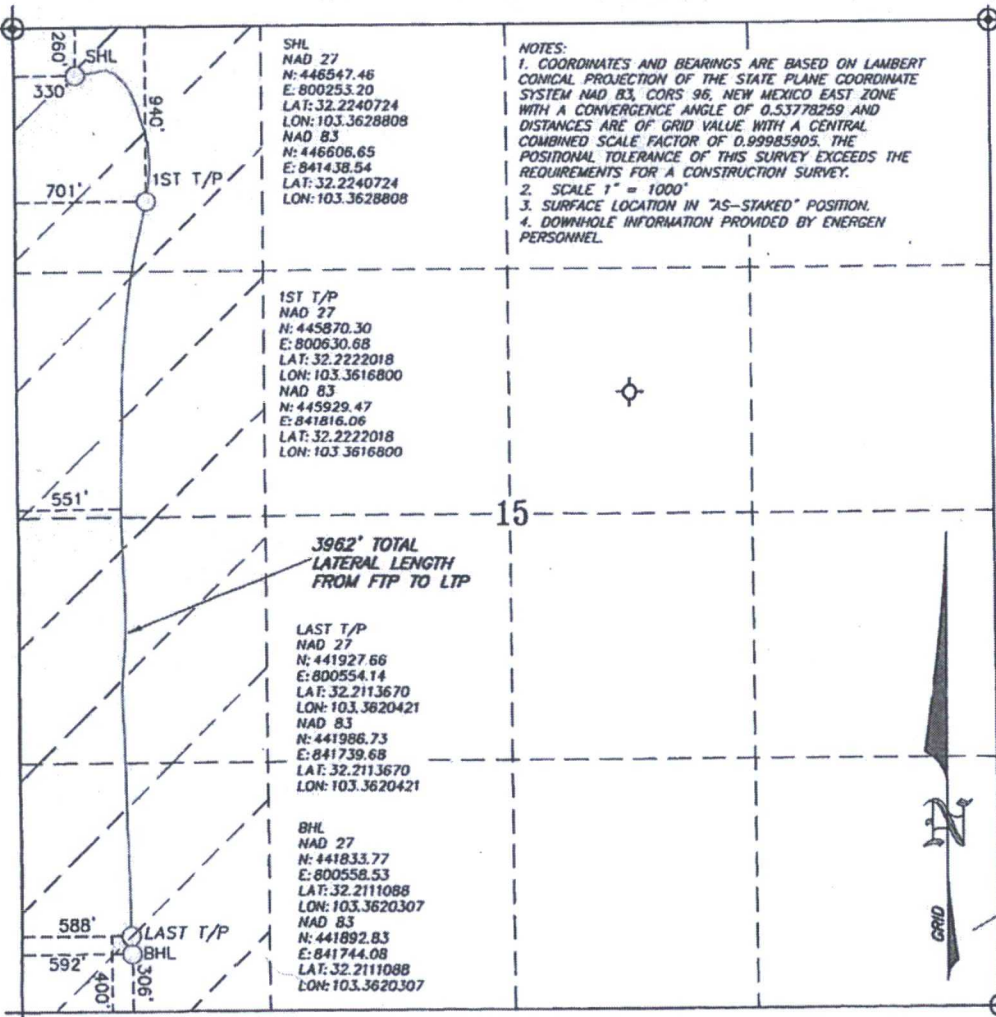
Surface Location

UL or lot No.	Section	Township	Range	Lot Idn	Feet from the	North/South line	Feet from the	East/West line	County
D	15	24-S	35-E		260	NORTH	330	WEST	LEA

Bottom Hole Location If Different From Surface

UL or lot No.	Section	Township	Range	Lot Idn	Feet from the	North/South line	Feet from the	East/West line	County
M	15	24-S	35-E		306	SOUTH	592	WEST	LEA
Dedicated Acres 180	Joint or Infill	Consolidation Code	Order No.						

NO ALLOWABLE WILL BE ASSIGNED TO THIS COMPLETION UNTIL ALL INTERESTS HAVE BEEN CONSOLIDATED
OR A NON-STANDARD UNIT HAS BEEN APPROVED BY THE DIVISION



OPERATOR CERTIFICATION

I hereby certify that the information contained herein is true and complete to the best of my knowledge and belief, and that this organization either owns a working interest or unleased mineral interest in the land including the proposed bottom hole location or has a right to drill this well at this location pursuant to a contract with an owner of such a mineral or working interest, or to a voluntary pooling agreement or compulsory pooling order heretofore entered by the division.

Brenda Rathjen 1/9/2018
Signature Date
Brenda F. Rathjen
Printed Name
1/9/2018
Date

SURVEYOR CERTIFICATION

I hereby certify that the well location shown on this plat was plotted from field notes of actual surveys made by me or under my supervision, and that the same is true and correct to the best of my belief.

MAY 22 2018
Date Signed
Signature & Seal of Professional Surveyor
Professional Surveyor
3959
NEW MEXICO
WILSON D. WATSON JR.
NOVEMBER 2018
Signature Date
Certificate No. WILSON D. WATSON JR.
P.L.S. #3959
W017-1049-00, FILE T PROJECTS\WATSON\2018\3959
WATSON PROFESSIONAL GROUP INC