

REDistrict I
1625 N. French Dr., Hobbs, NM 88240
Phone: (575) 393-6161 Fax: (575) 393-0720
District II
811 S First St., Artesia, NM 88210
Phone: (575) 748-1283 Fax: (575) 748-9720
District III
1000 Rio Brazos Road, Aztec, NM 87410
Phone: (505) 334-6178 Fax: (505) 334-6170
District IV
1220 S St. Francis Dr., Santa Fe, NM 87505
Phone: (505) 476-3460 Fax: (505) 476-3462

HOBBS OCD

JAN 11 2018

RECEIVED

State of New Mexico
Energy, Minerals & Natural Resources Department
OIL CONSERVATION DIVISION
1220 South St. Francis Dr.
Santa Fe, NM 87505

Form C-102
Revised August 1, 2011
Submit one copy to appropriate
District Office

X AMENDED REPORT #2

Amended WLL footage

WELL LOCATION AND ACREAGE DEDICATION PLAT

¹ API Number 30-025-44199		² Pool Code 98246	³ Pool Name WC-025 G-06 S233516M MIDDLE BONE SP
⁴ Property Code 319716	⁵ Property Name PEGASUS 23-35-16 STATE		⁶ Well Number #251H
⁷ OGRID No. 162928	⁸ Operator Name ENERGEN RESOURCES CORPORATION		⁹ Elevation 3403.98'

" Surface Location

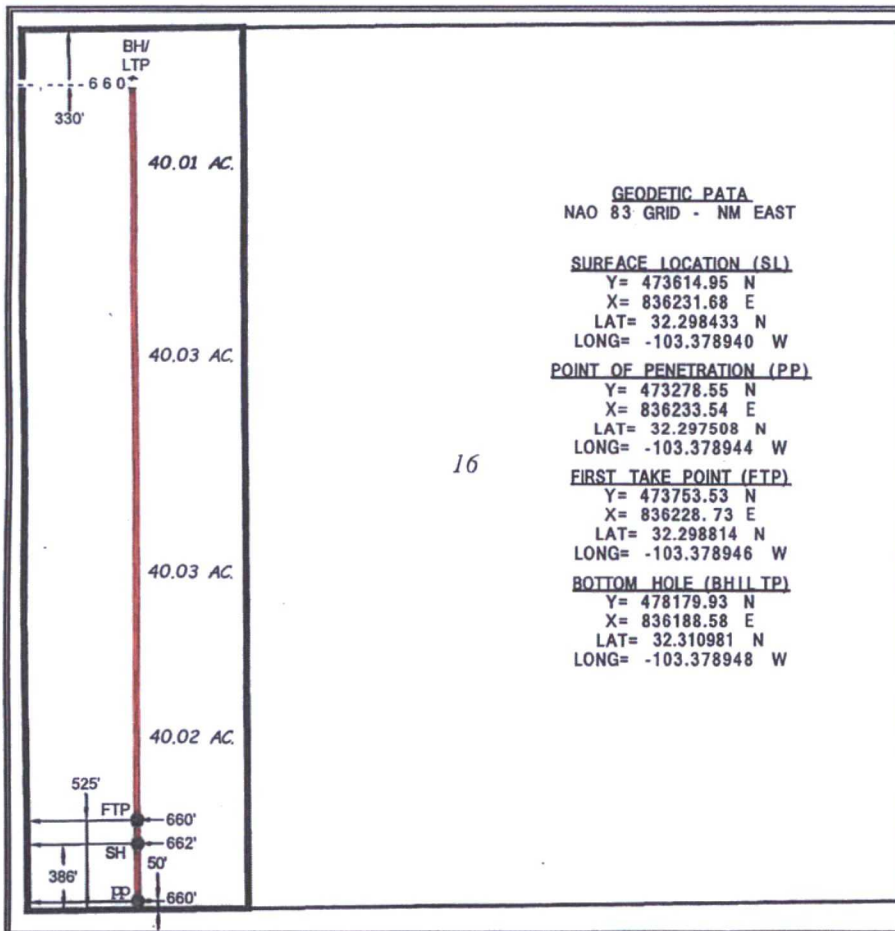
UL or lot no.	Section	Township	Range	Lot Idn	Feet from the	North/South line	Feet from the	East/West line	County
M	16	23 S	35 E		386	SOUTH	662	WEST	LEA

" Bottom Hole Location If Different From Surface

UL or lot no.	Section	Township	Range	Lot Idn	Feet from the	North/South line	Feet from the	East/West line	County
D	16	23 S	35 E		330	NORTH	660	WEST	LEA

¹⁰ Dedicated Acres 160.09	¹¹ Joint or Infill	¹² Consolidation Code	¹³ Order No.
--	-------------------------------	----------------------------------	-------------------------

No allowable will be assigned to this completion until all interests have been consolidated or a non-standard unit has been approved by the division.



GEODETIC DATA
NAO 83 GRID - NM EAST

SURFACE LOCATION (SL)

Y= 473614.95 N
X= 836231.68 E
LAT= 32.298433 N
LONG= -103.378940 W

POINT OF PENETRATION (PP)

Y= 473278.55 N
X= 836233.54 E
LAT= 32.297508 N
LONG= -103.378944 W

FIRST TAKE POINT (FTP)

Y= 473753.53 N
X= 836228.73 E
LAT= 32.298814 N
LONG= -103.378946 W

BOTTOM HOLE (BH) LTP

Y= 478179.93 N
X= 836188.58 E
LAT= 32.310981 N
LONG= -103.378948 W

" OPERATOR CERTIFICATION

I hereby certify that the information contained herein is true and complete to the best of my knowledge and belief, and that this organization either owns a working interest or unleased mineral interest in the land block/lot/acreage proposed bottom hole location or has a right to drill this well at this location pursuant to a contract with an owner of such a mineral or working interest, or to a voluntary pooling agreement, or a compulsory pooling order heretofore entered by the division.

Brenda Rathjen 1/11/2018
Signature Date

Brenda F. Rathjen
Printed Name

brenda.rathjen@energen.com
E-mail Address

" SURVEYOR CERTIFICATION

I hereby certify that the well location shown on this plat was plotted from field notes of actual surveys made by me or under my supervision, and that the same is true and correct to the best of my belief.

12/20/2017
Date of Survey

Robert P. Allen
Signature and Seal of Registered Professional Surveyor
NEW MEXICO
23572

23572
Certificate Number