

District I  
1625 N. French Dr., Hobbs, NM 88240  
Phone: (575) 393-6161 Fax: (575) 393-0720  
District II  
811 S. First St., Artesia, NM 88210  
Phone: (575) 748-1283 Fax: (575) 748-9720  
District III  
1000 Rio Brazos Road, Aztec, NM 87410  
Phone: (505) 334-6178 Fax: (505) 334-6170  
District IV  
1220 S. St. Francis Dr., Santa Fe, NM 87505  
Phone: (505) 334-3460 Fax: (505) 476-1220

State of New Mexico  
Energy, Minerals & Natural Resources Department  
OIL CONSERVATION DIVISION  
1220 South St. Francis Dr.  
Santa Fe, NM 87505

Form C-102  
Revised August 1, 2011  
Submit one copy to appropriate  
District Office

☐ AMENDED REPORT

WELL LOCATION AND ACREAGE DEDICATION PLAT

1 Well Number 44358	2 Pool Code 98250	3 Pool Name Wildcat; Wolfcamp
4 Property Code 36025 319775	5 Property Name VACA DRAW 20-17 FEDERAL	6 Well Number 12H
7 OGRID No. 215099	8 Operator Name CIMAREX ENERGY CO.	9 Elevation 3417.0'

10 Surface Location

UL or lot no.	Section	Township	Range	Lot Idn	Feet from the	North/South line	Feet from the	East/West line	County
N	20	25S	33E		330	SOUTH	2050	WEST	LEA

11 Bottom Hole Location If Different From Surface

UL or lot no.	Section	Township	Range	Lot Idn	Feet from the	North/South line	Feet from the	East/West line	County
C	17	25S	33E		330	NORTH	2590	WEST	LEA

12 Dedicated Acres 640	13 Joint or Infill	14 Consolidation Code	15 Order No.
---------------------------	--------------------	-----------------------	--------------

No allowance will be assigned to this completion until all interests have been consolidated or a non-standard unit has been approved by the division.

16 NOTE:  
Distances referenced on plat to  
section lines are perpendicular.

NAD 83 (SURFACE HOLE LOCATION)
LATITUDE = 32°06'35.07" (32.109742)
LONGITUDE = 103°35'46.42" (103.596228)
NAD 27 (SURFACE HOLE LOCATION)
LATITUDE = 32°06'34.62" (32.109617)
LONGITUDE = 103°35'44.72" (103.595756)
STATE PLANE NAD 83 (N.M. EAST)
N: 404440.34 E: 769561.59
STATE PLANE NAD 27 (N.M. EAST)
N: 404382.55 E: 728375.43

NAD 83 (BOTTOM HOLE LOCATION)
LATITUDE = 32°08'13.01" (32.136947)
LONGITUDE = 103°35'40.10" (103.594472)
NAD 27 (BOTTOM HOLE LOCATION)
LATITUDE = 32°08'12.56" (32.136822)
LONGITUDE = 103°35'38.40" (103.594000)
STATE PLANE NAD 83 (N.M. EAST)
N: 414341.69 E: 770037.18
STATE PLANE NAD 27 (N.M. EAST)
N: 414283.67 E: 728851.47

LINE TABLE

LINE	DIRECTION	LENGTH
L1	N53°18'59"E	672.30'



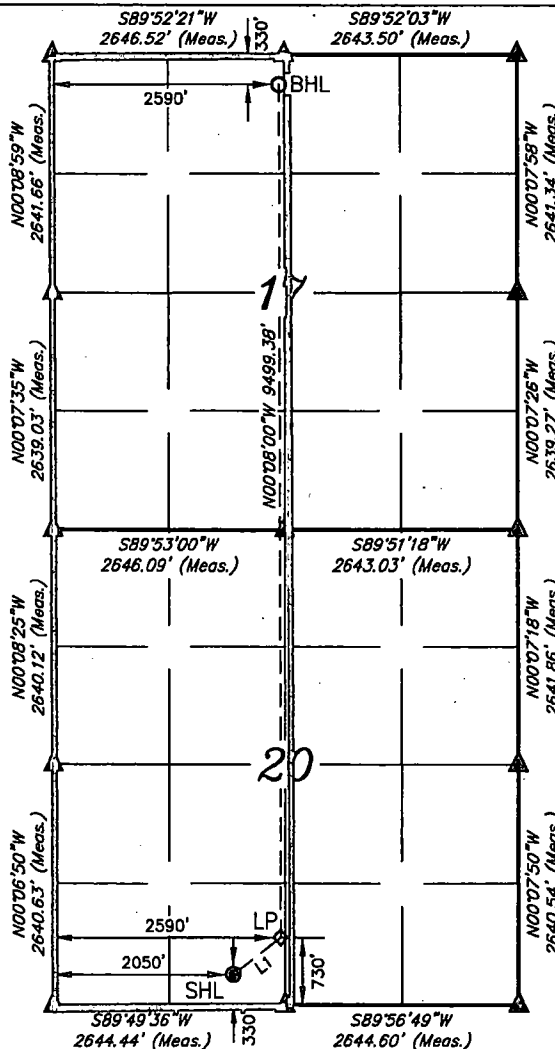
SCALE

DRAWN BY: S.F. 01-21-17

REV: 2 05-02-17 T.E.

(MOVED BHL POSITION)

- = SURFACE HOLE LOCATION
- = BOTTOM HOLE LOCATION
- ▲ = SECTION CORNERS LOCATED
- ◆ = LANDING POINT



17 OPERATOR  
CERTIFICATION

I hereby certify that the information contained herein is true and complete to the best of my knowledge and belief, and that this organization either owns a working interest or unleased mineral interest in the land including the proposed bottom hole location or has a right to drill this well at this location pursuant to a contract with an owner of such a mineral or working interest, or to a voluntary pooling agreement or a compulsory pooling order before entered by the division.

Signature: *Aricka Easterling* Date: 5/3/17

Aricka Easterling

Printed Name

aeasterling@cimarex.com

E-mail Address

18 SURVEYOR  
CERTIFICATION

I hereby certify that the well location shown on this plat was plotted from field notes of actual surveys made by me or under my supervision, and that the same is true and correct to the best of my belief.

January 20, 2017

Date of Survey

Signature and Seal of Professional Surveyor:



Certificate Number: