

District I
1625 N. French Dr., Hobbs, NM 88240
Phone: (575) 393-6161 Fax: (575) 393-0720
District II
811 S. First St., Artesia, NM 88201
Phone: (575) 748-1283 Fax: (575) 748-9720
District III
1000 Rio Brazos Ave., Artesia, NM 88201
Phone: (505) 476-3468 Fax: (505) 476-3468
District IV
1220 S. Francis Dr., Santa Fe, NM 87505
Phone: (505) 476-3468 Fax: (505) 476-3468

State of New Mexico
Energy, Minerals & Natural Resources Department
OIL CONSERVATION DIVISION
1220 South St. Francis Dr.
Santa Fe, NM 87505

Form C-102
Revised August 1, 2011
Submit one copy to appropriate
District Office

☐ AMENDED REPORT

WELL LOCATION AND ACREAGE DEDICATION PLAT

¹ APN Number 30-0250-44359	² Pool Code 98250	³ Pool Name Wildcat Wolfcamp
⁴ Property Code 319775	⁵ Property Name VACA DRAW 20-17 FEDERAL	⁶ Well Number 8H
⁷ OGRID No. 215099	⁸ Operator Name CIMAREX ENERGY CO.	⁹ Elevation 3423.0'

¹⁰ Surface Location

UL or lot no.	Section	Township	Range	Lot Idn	Feet from the	North/South line	Feet from the	East/West line	County
M	20	25S	33E		330	SOUTH	730	WEST	LEA

¹¹ Bottom Hole Location If Different From Surface

UL or lot no.	Section	Township	Range	Lot Idn	Feet from the	North/South line	Feet from the	East/West line	County
D	17	25S	33E		330	NORTH	1310	WEST	LEA
¹² Dedicated Acres 640		¹³ Joint or Infill		¹⁴ Consolidation Code		¹⁵ Order No.			

No allowable will be assigned to this completion until all interests have been consolidated or a non-standard unit has been approved by the division.

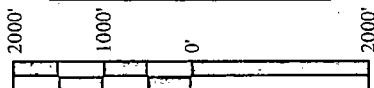
¹⁶ NOTE:

Distances referenced on plat to section lines are perpendicular.

NAD 83 (SURFACE HOLE LOCATION)	
LATITUDE = 32°06'35.06" (32.109739)	
LONGITUDE = 103°36'01.76" (103.600489)	
NAD 27 (SURFACE HOLE LOCATION)	
LATITUDE = 32°06'34.61" (32.109614)	
LONGITUDE = 103°36'00.06" (103.600017)	
STATE PLANE NAD 83 (N.M. EAST)	
N: 404430.85 E: 768241.87	
STATE PLANE NAD 27 (N.M. EAST)	
N: 404373.06 E: 727055.72	
NAD 83 (BOTTOM HOLE LOCATION)	
LATITUDE = 32°08'13.02" (32.136950)	
LONGITUDE = 103°35'54.99" (103.598608)	
NAD 27 (BOTTOM HOLE LOCATION)	
LATITUDE = 32°08'12.57" (32.136825)	
LONGITUDE = 103°35'53.28" (103.598133)	
STATE PLANE NAD 83 (N.M. EAST)	
N: 414333.49 E: 768757.43	
STATE PLANE NAD 27 (N.M. EAST)	
N: 414275.46 E: 727571.73	

LINE TABLE

LINE	DIRECTION	LENGTH
L1	N55°15'05"E	704.83'

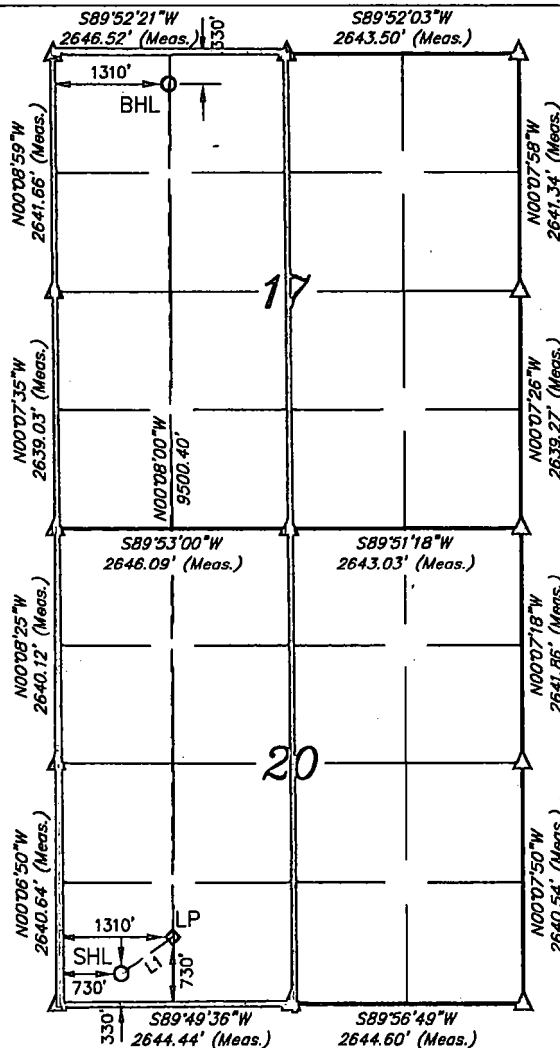


SCALE

DRAWN BY: S.F. 01-20-17

REV: 1 04-12-17 S.F.
(ADDED BOTTOM HOLE)

- = SURFACE HOLE LOCATION
- = BOTTOM HOLE LOCATION
- △ = SECTION CORNERS LOCATED
- ◇ = LANDING POINT



¹⁷ OPERATOR CERTIFICATION

I hereby certify that the information contained herein is true and complete to the best of my knowledge and belief, and that this organization either owns a working interest or unleased mineral interest in the land including the proposed bottom hole location or has a right to drill this well at this location pursuant to a contract with an owner of such a mineral or working interest, or to a voluntary pooling agreement or a compulsory pooling order heretofore entered by the division.

A Easterling 4/19/17
Signature Date

Aricka Easterling

Printed Name

aeasterling@cimarex.com

E-mail Address

¹⁸ SURVEYOR CERTIFICATION

I hereby certify that the well location shown on this plat was plotted from field notes of actual surveys made by me or under my supervision, and that the same is true and correct to the best of my belief.

January 19, 2017

Date of Survey

Signature and Seal of Professional Surveyor:



Certificate Number: