

DISTRICT I  
1625 N. French Dr., Hobbs, NM 88240

DISTRICT II  
611 South First, Artesia, NM 88210

DISTRICT III  
1000 Rio Brazos Rd., Artesia, NM 87410

DISTRICT IV  
2040 South Pacheco, Santa Fe, NM 87505

State of New Mexico  
Energy, Minerals and Natural Resources Department

OIL CONSERVATION DIVISION  
1220 South St. Francis Dr.  
Santa Fe, New Mexico 87505

HOBBS OCD

JAN 18 2018

RECEIVED

Form C-102  
Revised August 1, 2011

Submit one copy to Appropriate  
District Office

#244690

☐ AMENDED REPORT

WELL LOCATION AND ACREAGE DEDICATION PLAT

API Number 30-025-44377	Pool Code 98098	Pool Name WC-025 G-09 S243532M; WOLFBORE
Property Code 317499	Property Name ANGUS STATE 24-35 18	Well Number 452H
OGRID No. 162928	Operator Name ENERGEN RESOURCES CORPORATION	Elevation 3389'

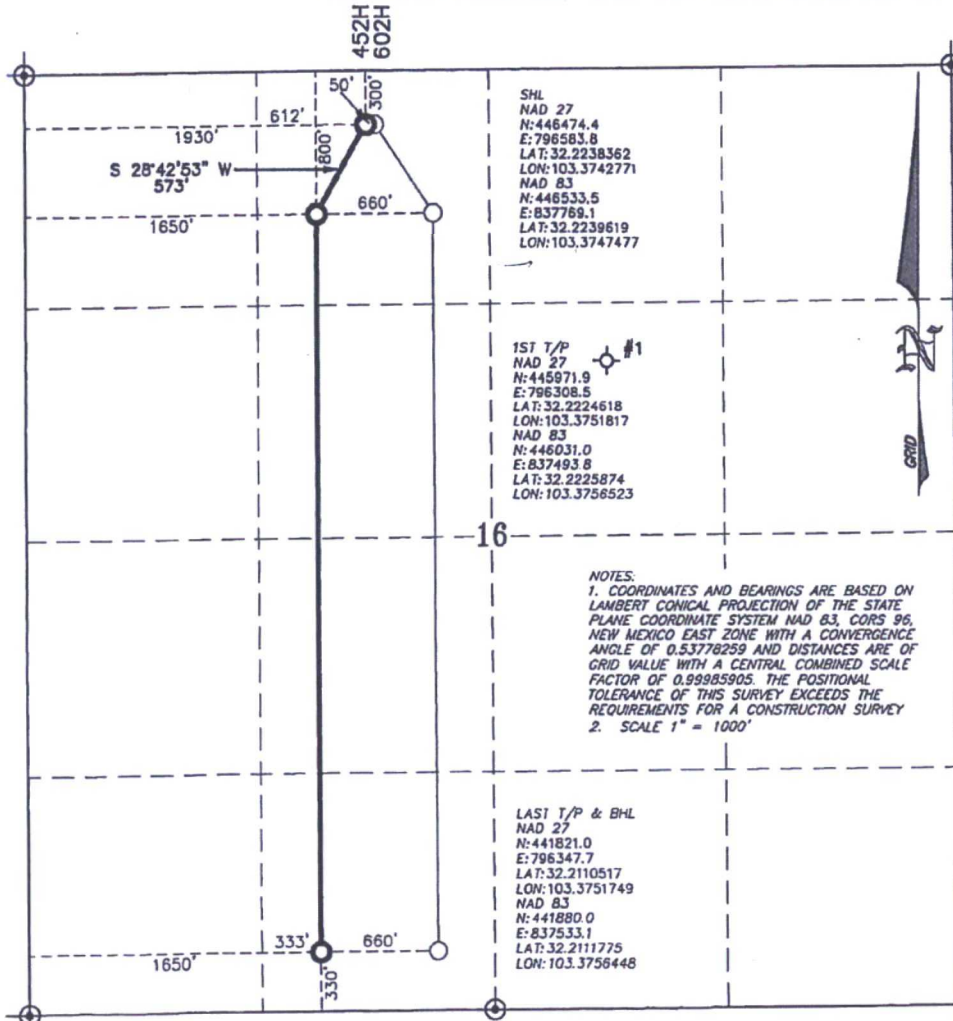
Surface Location

UL or lot No.	Section	Township	Range	Lot Idn	Feet from the	North/South line	Feet from the	East/West line	County
C	18	24-S	35-E		300	NORTH	1930	WEST	LEA

Bottom Hole Location If Different From Surface

UL or lot No.	Section	Township	Range	Lot Idn	Feet from the	North/South line	Feet from the	East/West line	County
N	18	24-S	35-E		330	SOUTH	1650	WEST	LEA
Dedicated Acres 160	Joint or Infill	Consolidation Code	Order No.						

NO ALLOWABLE WILL BE ASSIGNED TO THIS COMPLETION UNTIL ALL INTERESTS HAVE BEEN CONSOLIDATED  
OR A NON-STANDARD UNIT HAS BEEN APPROVED BY THE DIVISION



OPERATOR CERTIFICATION

I hereby certify that the information contained herein is true and complete to the best of my knowledge and belief, and that this organization either owns a working interest or unleased mineral interest in the land including the proposed bottom hole location or has a right to drill this well at this location pursuant to a contract with an owner of such a mineral or working interest, or to a voluntary pooling agreement or compulsory pooling order heretofore entered by the division.

Brenda F. Rathjen 1/04/2018  
Signature Date

Brenda F. Rathjen  
Printed Name

1/04/2018  
Date

SURVEYOR CERTIFICATION

I hereby certify that the well location shown on this plat was plotted from field notes of actual surveys made by me or under my supervision, and that the same is true and correct to the best of my knowledge and belief.

NOVEMBER 28, 2017  
Date Surveyed No. 3959  
Signature & Seal of Professional Surveyor  
WILSON D. WATSON, JR.  
JANUARY 4, 2018  
Signature Date

Certificate No. WILSON D. WATSON, JR.  
P.L.S. #3959  
W0117-1242-02 FILE 1-PROJECTS/VALUATIONS/2017  
WATSON PROFESSIONAL GROUP INC