

DISTRICT I  
1625 N. French Dr., Hobbs, NM 88240  
Phone: (575) 393-6161 Fax: (575) 393-0720  
DISTRICT II  
811 S. First St., Artesia, NM 88210  
Phone: (575) 748-1283 Fax: (575) 748-9720  
DISTRICT III  
1000 Rio Branos Road, Aztec, NM 87410  
Phone: (505) 334-6178 Fax: (505) 334-6170  
DISTRICT IV  
1220 S. St. Francis Dr., Santa Fe, NM 87505  
Phone: (505) 476-3460 Fax: (505) 476-3462

State of New Mexico  
Energy, Minerals & Natural Resources Department  
OIL CONSERVATION DIVISION  
1220 South St. Francis Dr.  
Santa Fe, New Mexico 87505

Form C-102  
Revised August 1, 2011  
Submit one copy to appropriate  
District Office

X AMENDED REPORT

WELL LOCATION AND ACREAGE DEDICATION PLAT

API Number 30-025-42988	Pool Code 97983	Pool Name WC-025 G-08 S203506D;BONE SPRING
Property Code 315700	Property Name EAGLE CLAW FEDERAL COM	Well Number 1H
OGRID No. 249099	Operator Name CAZA OPERATING, LLC	Elevation 3696'

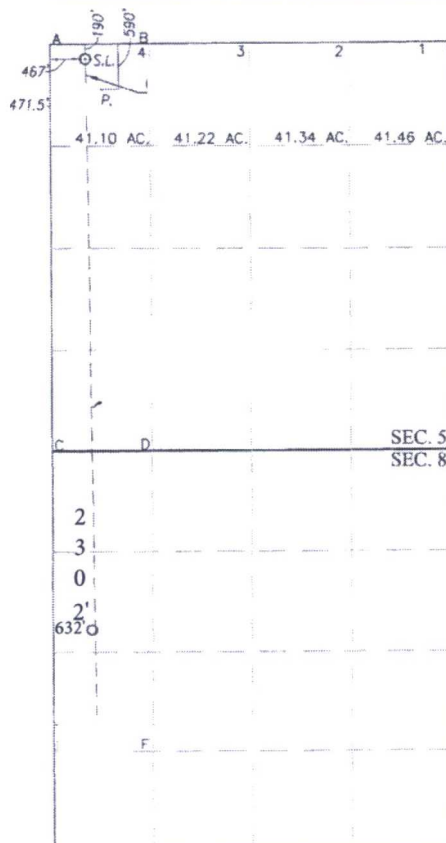
UL or lot No.	Section	Township	Range	Lot Idn	Feet from the	North/South line	Feet from the	East/West line	County
4	5	20-S	35-E		190	NORTH	467	WEST	LEA

Bottom Hole Location If Different From Surface

UL or lot No.	Section	Township	Range	Lot Idn	Feet from the	North/South line	Feet from the	East/West line	County
L	8	20-S	35-E		2302	North	632	WEST	LEA

Dedicated Acres 240	Joint or Infill	Consolidation Code	Order No.
------------------------	-----------------	--------------------	-----------

NO ALLOWABLE WILL BE ASSIGNED TO THIS COMPLETION UNTIL ALL INTERESTS HAVE BEEN CONSOLIDATED OR A NON-STANDARD UNIT HAS BEEN APPROVED BY THE DIVISION



SCALE: 1"=2000'

GEODETIC COORDINATES NAD 83 NME SURFACE LOCATION Y= 586346.0 N X= 802082.8 E LAT.= 32.609062° N LONG.= 103.486555° W	GEODETIC COORDINATES NAD 27 NME SURFACE LOCATION Y= 586282.9 N X= 760901.9 E LAT.= 32.608938° N LONG.= 103.486066° W
--	--

BOTTOM HOLE LOCATION  
NAD 83 NME

Y=578905.62N  
X=802211.64W  
Lat= 32.58861°  
Long=-103.486329°

OPERATOR CERTIFICATION

I hereby certify that the information herein is true and complete to the best of my knowledge and belief, and that this organization either owns a working interest or unleased mineral interest in the land including the proposed bottom hole location or has a right to drill this well at this location pursuant to a contract with an owner of such mineral or working interest, or to a voluntary pooling agreement or a compulsory pooling order heretofore entered by the division.

Signature \_\_\_\_\_ Date 11/29/2017

Steve Morris  
Printed Name

steve.morris@mojoenergy.com  
E-mail Address

SURVEYOR CERTIFICATION

I hereby certify that the well location shown on this plat was plotted from field notes of actual surveys made by me or under my supervision, and that the same is true and correct to the best of my belief.

DECEMBER 14, 2016

Date of Survey \_\_\_\_\_  
Signature & Seal of Professional Surveyor.

ACK  
JWSC W.O. 16.11.0992

HOBBS OGD

JAN 22 2018

RECEIVED