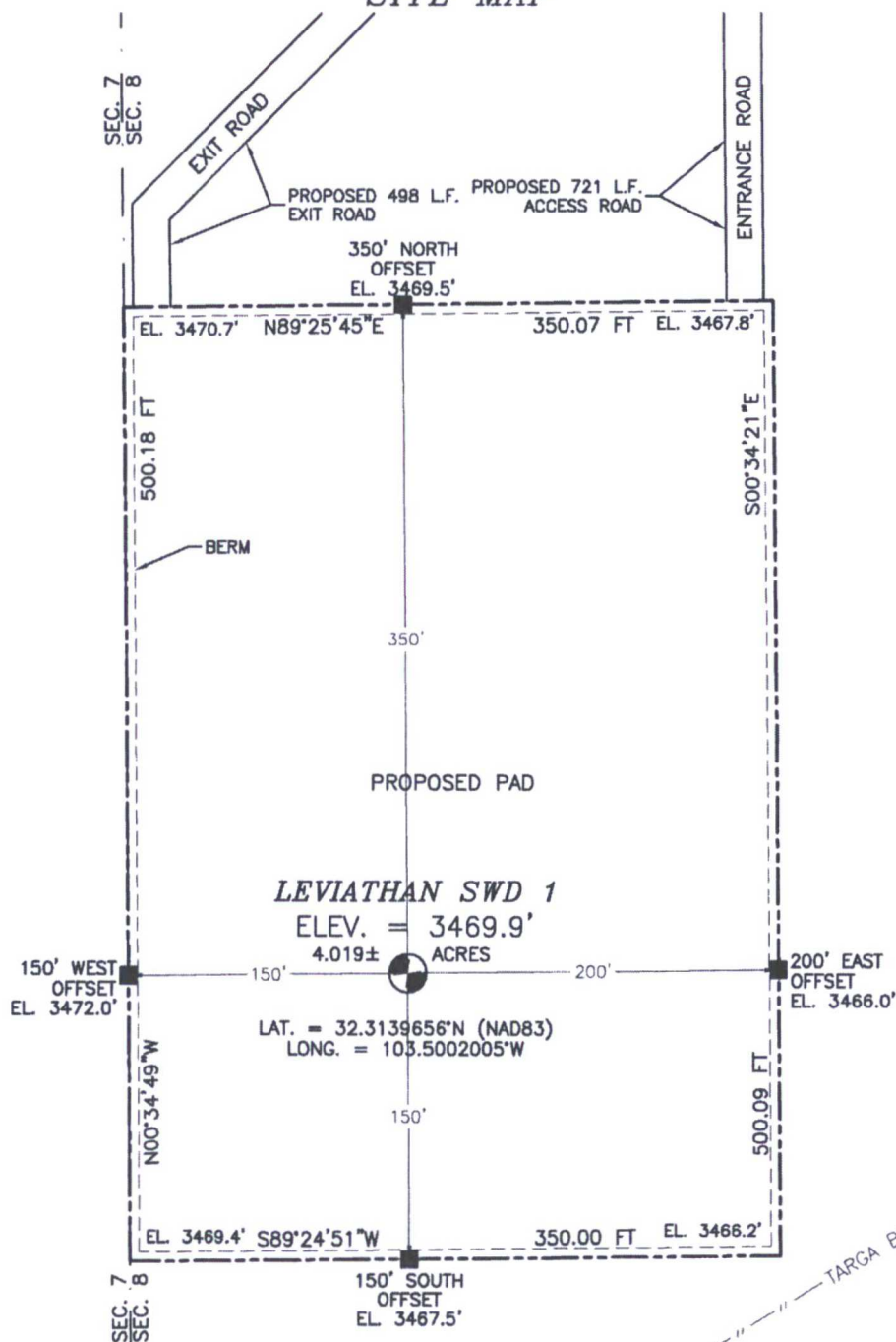


SECTION 8, TOWNSHIP 23 SOUTH, RANGE 34 EAST, N.M.P.M.
LEA COUNTY, STATE OF NEW MEXICO
SITE MAP



010 50 100 200

SCALE 1" = 100'

DIRECTIONS TO LOCATION

FROM STATE HWY. 128 & CR. 21 (DELAWARE BASIN RD.) GO NORTH ON CR. 21 7.3 MILES, TURN RIGHT ON CALICHE ROAD AND GO EAST 0.65 MILE TO A PROPOSED ROAD SURVEY, AND FOLLOW FLAGS SOUTH 721' TO THE NORTHEAST PAD CORNER FOR THIS LOCATION.

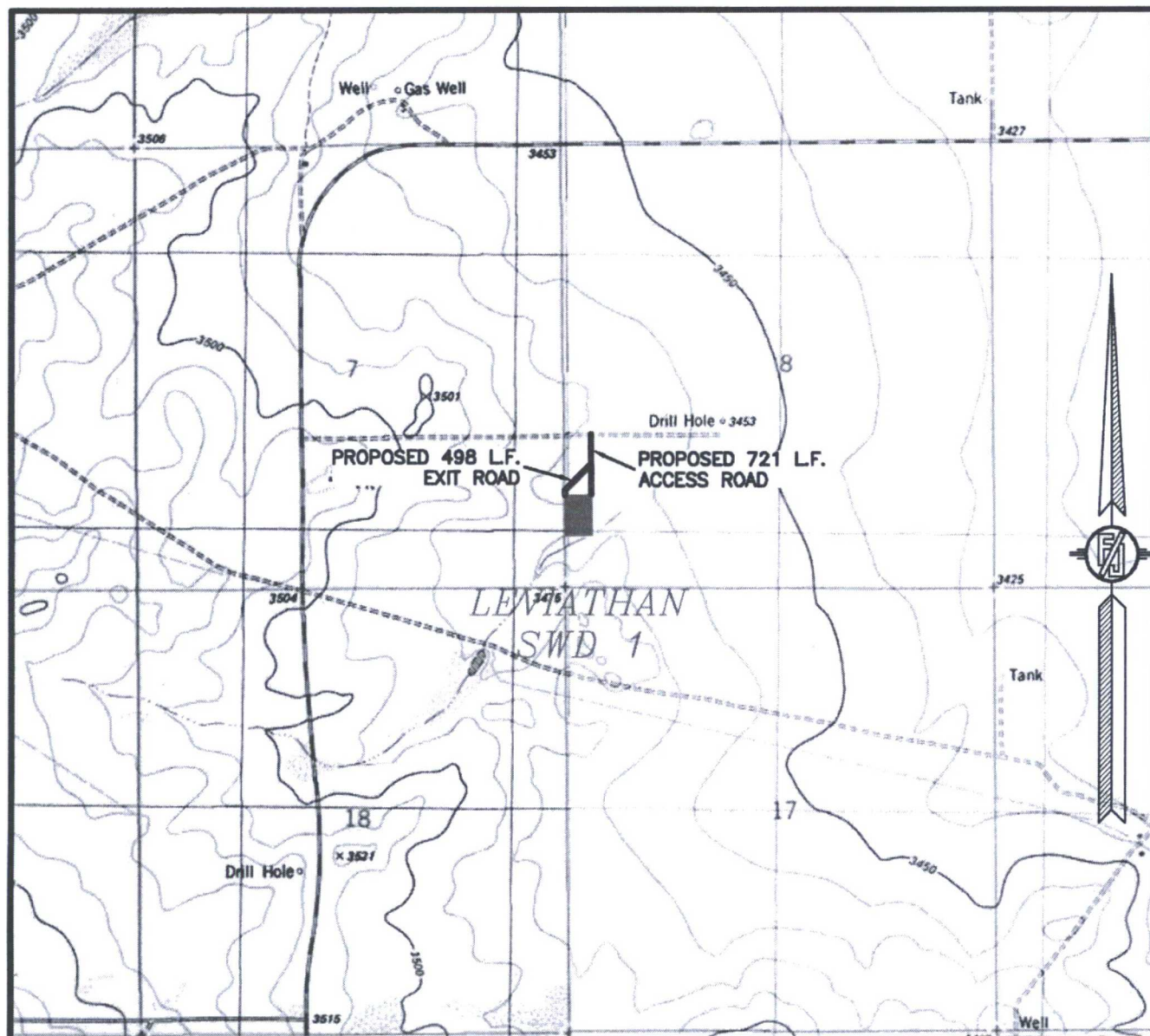
KAISER-FRANCES OIL COMPANY
LEVIATHAN SWD 1
LOCATED 760 FT. FROM THE SOUTH LINE
AND 150 FT. FROM THE WEST LINE OF
SECTION 8, TOWNSHIP 23 SOUTH,
RANGE 34 EAST, N.M.P.M.
LEA COUNTY, STATE OF NEW MEXICO

OCTOBER 25, 2017

SURVEY NO. 5635A

MADRON SURVEYING, INC. 301 SOUTH CANAL CARLSBAD, NEW MEXICO
(575) 234-3341

SECTION 8, TOWNSHIP 23 SOUTH, RANGE 34 EAST, N.M.P.M.
LEA COUNTY, STATE OF NEW MEXICO
LOCATION VERIFICATION MAP



USGS QUAD MAP:
SAN SIMON SINK
TIP TOP WELLS

NOT TO SCALE

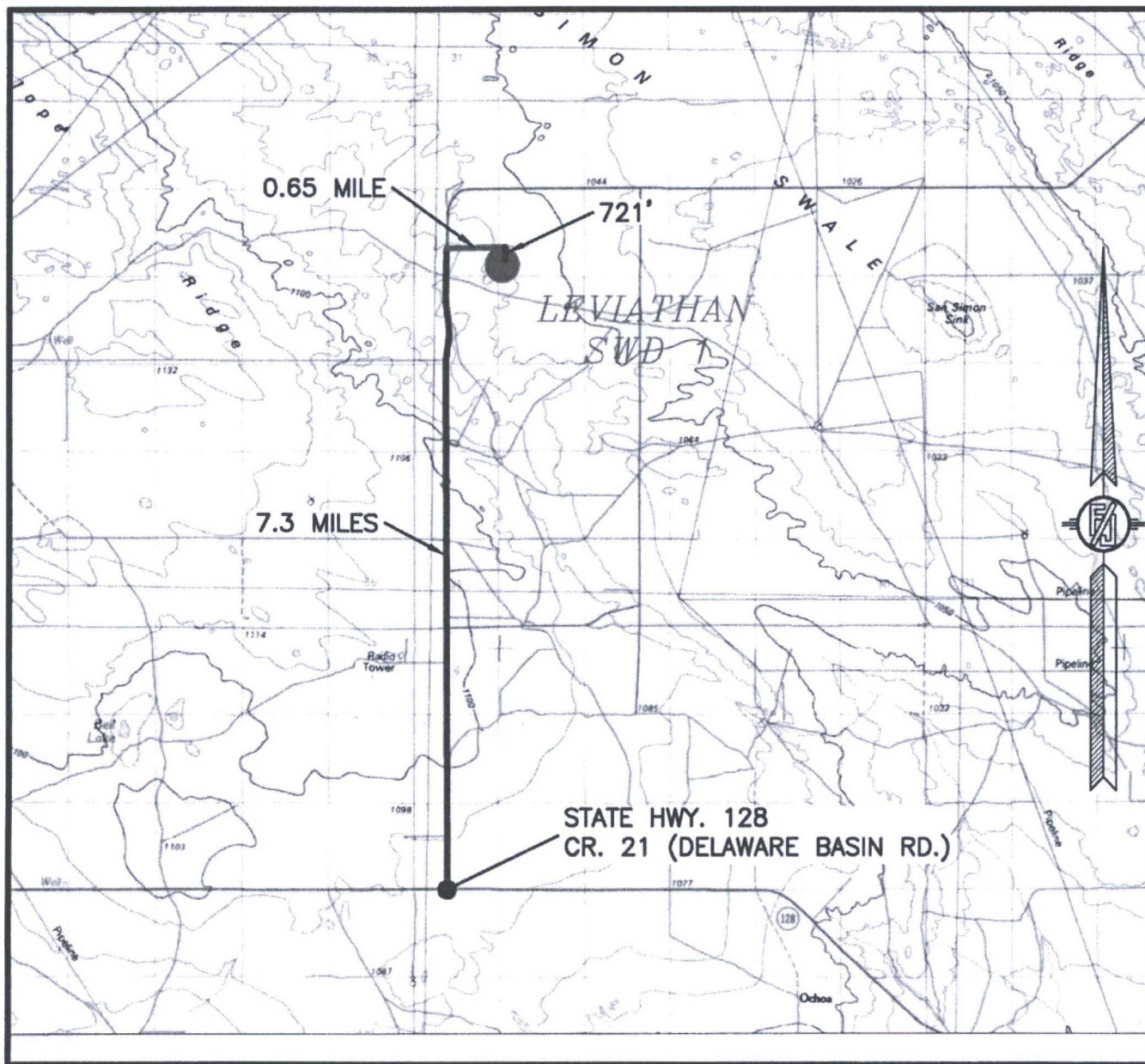
KAISER-FRANCES OIL COMPANY
LEVIATHAN SWD 1
LOCATED 760 FT. FROM THE SOUTH LINE
AND 150 FT. FROM THE WEST LINE OF
SECTION 8, TOWNSHIP 23 SOUTH,
RANGE 34 EAST, N.M.P.M.
LEA COUNTY, STATE OF NEW MEXICO

OCTOBER 25, 2017

SURVEY NO. 5635A

MADRON SURVEYING, INC. 301 SOUTH CANAL (575) 234-3341 CARLSBAD, NEW MEXICO

SECTION 8, TOWNSHIP 23 SOUTH, RANGE 34 EAST, N.M.P.M.
LEA COUNTY, STATE OF NEW MEXICO
VICINITY MAP



DISTANCES IN MILES

NOT TO SCALE

DIRECTIONS TO LOCATION

FROM STATE HWY. 128 & CR. 21 (DELAWARE BASIN RD.) GO NORTH ON CR. 21 7.3 MILES, TURN RIGHT ON CALICHE ROAD AND GO EAST 0.65 MILE TO A PROPOSED ROAD SURVEY, AND FOLLOW FLAGS SOUTH 721' TO THE NORTHEAST PAD CORNER FOR THIS LOCATION.

KAISER-FRANCES OIL COMPANY
LEVIATHAN SWD 1
LOCATED 760 FT. FROM THE SOUTH LINE
AND 150 FT. FROM THE WEST LINE OF
SECTION 8, TOWNSHIP 23 SOUTH,
RANGE 34 EAST, N.M.P.M.
LEA COUNTY, STATE OF NEW MEXICO

OCTOBER 25, 2017

SURVEY NO. 5635A

MADRON SURVEYING, INC. 301 SOUTH CANAL (575) 234-3341

CARLSBAD, NEW MEXICO

SECTION 8, TOWNSHIP 23 SOUTH, RANGE 34 EAST, N.M.P.M.
LEA COUNTY, STATE OF NEW MEXICO
AERIAL PHOTO



NOT TO SCALE
AERIAL PHOTO:
GOOGLE EARTH
FEB. 2017

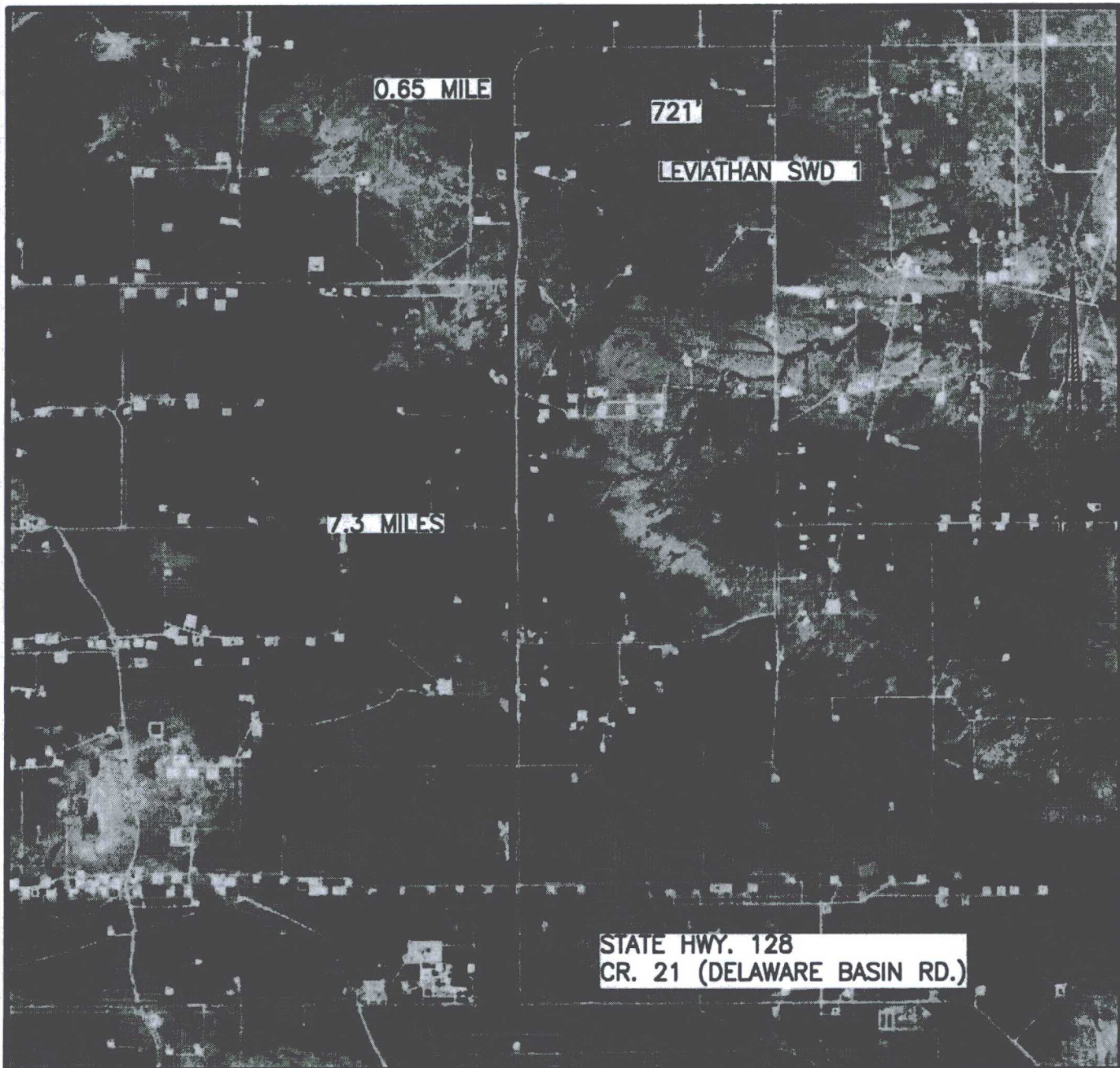
**KAISER-FRANCES OIL COMPANY
LEVIATHAN SWD 1**
LOCATED 760 FT. FROM THE SOUTH LINE
AND 150 FT. FROM THE WEST LINE OF
SECTION 8, TOWNSHIP 23 SOUTH,
RANGE 34 EAST, N.M.P.M.
LEA COUNTY, STATE OF NEW MEXICO

OCTOBER 25, 2017

SURVEY NO. 5635A

MADRON SURVEYING, INC. 301 SOUTH CANAL (575) 234-3341 CARLSBAD, NEW MEXICO

SECTION 8, TOWNSHIP 23 SOUTH, RANGE 34 EAST, N.M.P.M.
LEA COUNTY, STATE OF NEW MEXICO
AERIAL ACCESS ROUTE MAP



NOT TO SCALE
AERIAL PHOTO:
GOOGLE EARTH
FEB. 2017

KAISER-FRANCES OIL COMPANY
LEVIATHAN SWD 1
LOCATED 760 FT. FROM THE SOUTH LINE
AND 150 FT. FROM THE WEST LINE OF
SECTION 8, TOWNSHIP 23 SOUTH,
RANGE 34 EAST, N.M.P.M.
LEA COUNTY, STATE OF NEW MEXICO

OCTOBER 25, 2017

SURVEY NO. 5635A

MADRON SURVEYING, INC. 301 SOUTH CANAL
(575) 234-3341

CARLSBAD, NEW MEXICO

WELL SCHEMATIC - PROPOSED Leviathan State SWD Well No.1

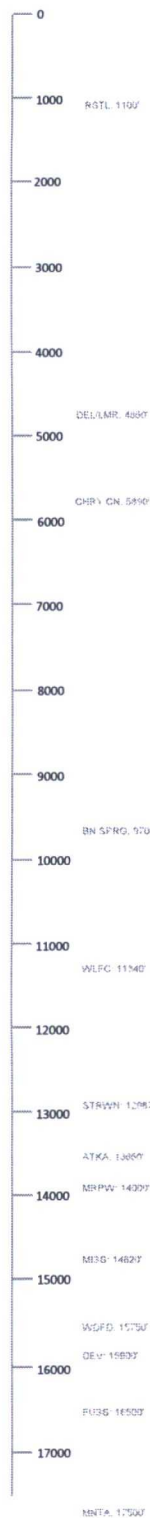
API 30-025-xxxxx

760' FSL & 150' FWL, SEC. 8-T23S-R34E
LEA COUNTY, NEW MEXICO

SWD; Devonian-Silurian (97869)

Spud Date: 1/15/2018

SWD Config Dt: 2/15/2018

Annulus Monitored
or open to atmosphereInjection Pressure Regulated and Volumes Reported
3180 psi Max. Surface (0.2 psi per foot)Annulus Loaded
w/ Inert Packer FluidSurface Casing20.0", 94.0# H-40 BTC Csg. (26.0" Hole) @ 1200'
1800 sx - Circulated to SurfaceIntermediate Casing13.375", 68.0# Csg. (17.5" Hole) @ 5250'
2000 sx - Circulated to Surface

Kaiser-Francis Oil Company

Drill and set casing as designed w/ all strings cemented to surface. Install 7.625" liner @ ~15,900 w/ 400 sx to TOL. Drill 6.5" openhole to approx. 17,500' TD w/ mudlog for interval/formation verification. Acidize formation; run 5.5" (5.0" FJ inside liner) injection TBG on PKR set at 15,800'+. Conduct OCD witnessed MIT. Well ready for injection upon completion of surface facilities.

2nd Intermediate Casing9.875", 62.8# Q-125 Csg. (12.25" Hole) @ 12,600'
2000 sx - TOC ~4500'Prod/LNR Casing7.625", 39.0# P-110 Csg (8.5" Hole) 11,700' to 15,900'
400 sxs Cls H - TOC @ Top of LNR

6.5" Openhole Interval: 15,900' to 17,500'

DTD @ ~17,500'

Drawn by: Ben Stone, 12/01/2017

(Attachment to NMOCD Form C-108 - Item V)

