

District I  
1625 N. French Dr., Hobbs, NM 88240  
Phone: (575) 393-6161 Fax: (505) 393-0720  
District II  
811 S. First St., Artesia, NM 88210  
Phone: (575) 748-1282 Fax: (575) 748-9720  
District III  
1000 Rio Brazos Road, Aztec, NM 87410  
Phone: (505) 342-2708 Fax: (505) 334-6170  
District IV  
1220 S. St. Francis Dr., Santa Fe, NM 87505  
Phone: (505) 476-3460 Fax: (505) 476-3460

State of New Mexico  
Energy, Minerals & Natural Resources Department  
OIL CONSERVATION DIVISION  
1220 South St. Francis Dr.  
Santa Fe, NM 87505

Form C-102  
Revised August 1, 2011  
Submit one copy to appropriate  
District Office

☐ AMENDED REPORT

WELL LOCATION AND ACREAGE DEDICATION PLAT

<sup>1</sup> API Number 30-025- <b>44528</b>	<sup>2</sup> Pool Code 44500	<sup>3</sup> Pool Name Maljamar, YesoWest
<sup>4</sup> Property Code <b>320830</b>	<sup>5</sup> Property Name PERIDOT 8 FEDERAL	<sup>6</sup> Well Number 1H
<sup>7</sup> OGRID No. 217817	<sup>8</sup> Operator Name ConocoPhillips Company	<sup>9</sup> Elevation 4045.3'

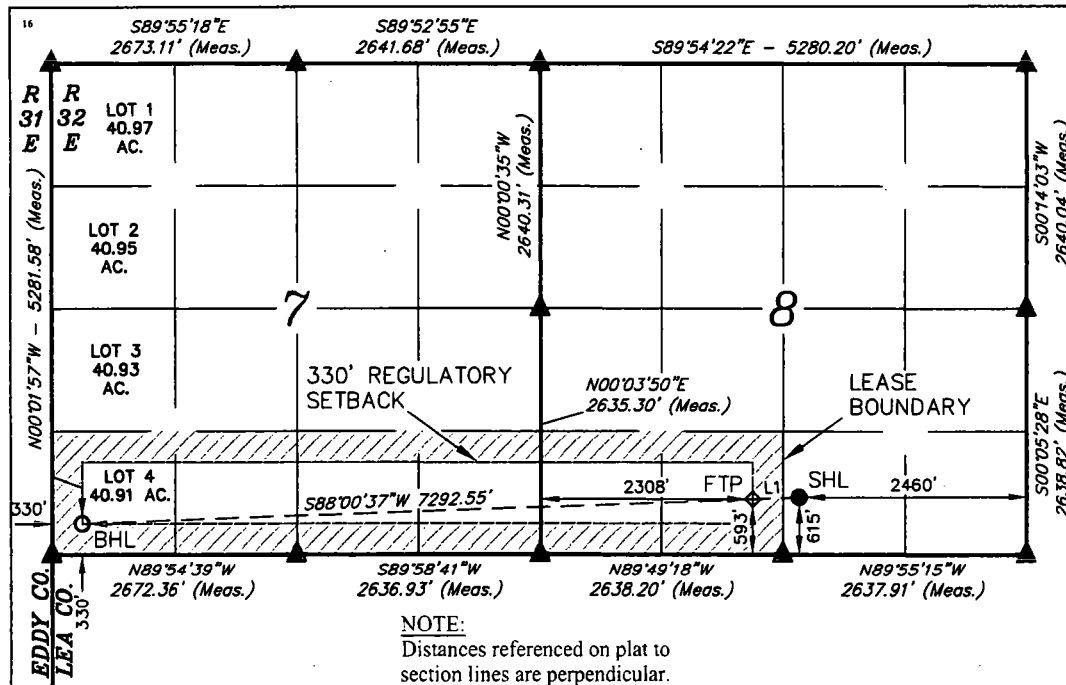
<sup>10</sup> Surface Location

UL or lot no.	Section	Township	Range	Lot Idn	Feet from the	North/South line	Feet from the	East/West line	County
O	8	17S	32E		615	SOUTH	2460	EAST	LEA

<sup>11</sup> Bottom Hole Location If Different From Surface

UL or lot no.	Section	Township	Range	Lot Idn	Feet from the	North/South line	Feet from the	East/West line	County
LOT 4	7	17S	32E		330	SOUTH	330	WEST	LEA
<sup>12</sup> Dedicated Acres 240.91		<sup>13</sup> Joint or Infill		<sup>14</sup> Consolidation Code		<sup>15</sup> Order No.			

No allowable will be assigned to this completion until all interests have been consolidated or a non-standard unit has been approved by the division.



NOTE:  
Distances referenced on plat to  
section lines are perpendicular.

NAD 83 (SURFACE HOLE LOCATION)	NAD 83 (FIRST TAKE POINT)	NAD 83 (BOTTOM HOLE LOCATION)
LATITUDE = 32°50'36.99" (32.843608)	LATITUDE = 32°50'36.78" (32.843550)	LATITUDE = 32°50'34.27" (32.842853)
LONGITUDE = 103°47'17.01" (103.788058)	LONGITUDE = 103°47'22.95" (103.789708)	LONGITUDE = 103°48'48.35" (103.813431)
NAD 27 (SURFACE HOLE LOCATION)	NAD 27 (FIRST TAKE POINT)	NAD 27 (BOTTOM HOLE LOCATION)
LATITUDE = 32°50'36.56" (32.843489)	LATITUDE = 32°50'36.36" (32.843433)	LATITUDE = 32°50'33.84" (32.842733)
LONGITUDE = 103°47'15.19" (103.787553)	LONGITUDE = 103°47'21.13" (103.789203)	LONGITUDE = 103°48'46.53" (103.812925)
STATE PLANE NAD 83 (N.M. EAST)	STATE PLANE NAD 83 (N.M. EAST)	STATE PLANE NAD 83 (N.M. EAST)
N: 671070.03 E: 708801.09	N: 671046.67 E: 708294.90	N: 670755.83 E: 701009.96
STATE PLANE NAD 27 (N.M. EAST)	STATE PLANE NAD 27 (N.M. EAST)	STATE PLANE NAD 27 (N.M. EAST)
N: 671005.70 E: 667622.76	N: 670982.34 E: 667116.57	N: 670691.59 E: 659831.55

- = SURFACE HOLE LOCATION
- ◆ = FIRST TAKE POINT
- = BOTTOM HOLE LOCATION
- ▲ = SECTION CORNER LOCATED

LINE TABLE		
LINE	DIRECTION	LENGTH
L1	S87°39'15"W	506.85'



SCALE

REV: 1 11-01-16 S.F. (WELL MOVE)

<sup>17</sup> OPERATOR  
CERTIFICATION

I hereby certify that the information contained herein is true and complete to the best of my knowledge and belief, and that this organization either owns a working interest or unleased mineral interest in the land including the proposed bottom hole location or has a right to drill this well at this location pursuant to a contract with an owner of such a mineral or working interest, or to a voluntary pooling agreement or a compulsory pooling order heretofore entered by the division.

Susan B. Maunder 12/9/16  
Signature Date

Susan B. Maunder  
Printed Name

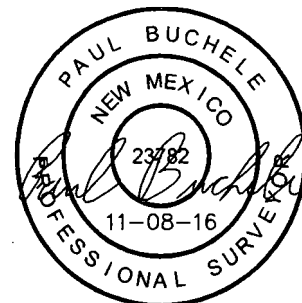
Susan.B.Maunder@conocophillips.com  
E-mail Address

<sup>18</sup> SURVEYOR  
CERTIFICATION

I hereby certify that the well location shown on this plat was plotted from field notes of actual surveys made by me or under my supervision, and that the same is true and correct to the best of my belief.

October 26, 2016

Date of Survey  
Signature and Seal of Professional Surveyor:



Certificate Number: