

District I
1625 N. French Dr., Hobbs, NM 88240
Phone: (575) 393-6161 Fax: (575) 393-0720
District II
811 S. First St., Artesia, NM 88210
Phone: (575) 748-1283 Fax: (575) 748-9720
District III
1000 Rio Brazos Road, Aztec, NM 87410
Phone: (505) 334-6178 Fax: (505) 334-6170
District IV
1220 S. St. Francis Dr., Santa Fe, NM 87505
Phone: (505) 476-3460 Fax: (505) 476-3462

State of New Mexico
Energy, Minerals & Natural Resources Department
OIL CONSERVATION DIVISION
1220 South St. Francis Dr.
Santa Fe, NM 87505

Form C-102
Revised August 1, 2011
Submit one copy to appropriate
District Office

HOBBS OCD
FEB 28 2018
RECEIVED

☐ AMENDED REPORT

WELL LOCATION AND ACREAGE DEDICATION PLAT

¹ API Number 30-025- 44532	² Pool Code 44500	³ Pool Name Maljamar, Yeso West
⁴ Property Code 320830	⁵ Property Name PERIDOT 8 FEDERAL	⁶ Well Number 15H
⁷ OGRID No. 217817	⁸ Operator Name ConocoPhillips Company	⁹ Elevation 4045.4'

¹⁰ Surface Location

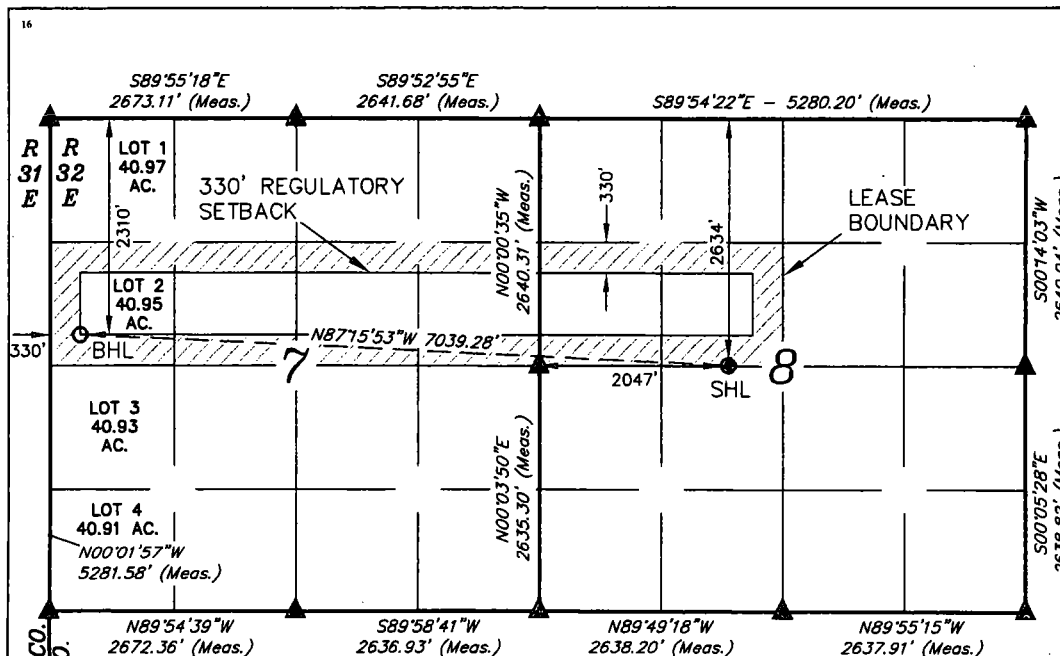
UL or lot no.	Section	Township	Range	Lot Ida	Feet from the	North/South line	Feet from the	East/West line	County
F	8	17S	32E		2634	NORTH	2047	WEST	LEA

¹¹ Bottom Hole Location If Different From Surface

UL or lot no.	Section	Township	Range	Lot Idn	Feet from the	North/South line	Feet from the	East/West line	County
LOT 2	7	17S	32E		2310	NORTH	330	WEST	LEA

¹² Dedicated Acres 240.95	¹³ Joint or Infill	¹⁴ Consolidation Code	¹⁵ Order No.
---	-------------------------------	----------------------------------	-------------------------

No allowable will be assigned to this completion until all interests have been consolidated or a non-standard unit has been approved by the division.



¹⁷ OPERATOR
CERTIFICATION

I hereby certify that the information contained herein is true and complete to the best of my knowledge and belief, and that this organization either owns a working interest or unleased mineral interest in the land including the proposed bottom hole location or has a right to drill this well at this location pursuant to a contract with an owner of such a mineral or working interest, or to a voluntary pooling agreement or a compulsory pooling order heretofore entered by the division.

Susan B Maunder 3/31/17
Signature Date

Susan B. Maunder
Printed Name

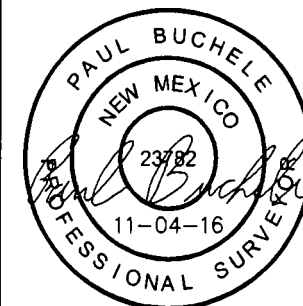
Susan.B.Maunder@conocophillips.com
E-mail Address

¹⁸ SURVEYOR
CERTIFICATION

I hereby certify that the well location shown on this plat was plotted from field notes of actual surveys made by me or under my supervision, and that the same is true and correct to the best of my belief.

October 26, 2016

Date of Survey
Signature and Seal of Professional Surveyor:

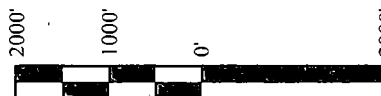


Certificate Number:

NAD 83 (SURFACE HOLE LOCATION) LATITUDE = 32°50'57.09" (32.849192) LONGITUDE = 103°47'25.98" (103.790550)	NAD 83 (BOTTOM HOLE LOCATION) LATITUDE = 32°51'00.40" (32.850111) LONGITUDE = 103°48'48.38" (103.813439)
NAD 27 (SURFACE HOLE LOCATION) LATITUDE = 32°50'56.66" (32.849072) LONGITUDE = 103°47'24.16" (103.790044)	NAD 27 (BOTTOM HOLE LOCATION) LATITUDE = 32°50'59.98" (32.849994) LONGITUDE = 103°48'46.56" (103.812933)
STATE PLANE NAD 83 (N.M. EAST) N: 673097.33 E: 708025.95	STATE PLANE NAD 83 (N.M. EAST) N: 673396.77 E: 700994.78
STATE PLANE NAD 27 (N.M. EAST) N: 673032.96 E: 666847.63	STATE PLANE NAD 27 (N.M. EAST) N: 673332.48 E: 659816.39

- = SURFACE HOLE LOCATION
- = BOTTOM HOLE LOCATION
- ▲ = SECTION CORNER LOCATED

NOTE:
Distances referenced on plat to section lines are perpendicular.



SCALE

DRAWN BY: S.F. 10-31-16