

DISTRICT I
1625 N. French Dr., Hobbs, NM 88240
Phone: (575) 393-6161 Fax: (575) 393-0720

DISTRICT II
811 S. First St., Artesia, NM 88210
Phone: (575) 748-1283 Fax: (575) 748-9720

DISTRICT III
1000 Rio Brazos Rd., Aztec, NM 87410
Phone: (505) 334-6178 Fax: (505) 334-6170

DISTRICT IV
1220 S. St. Francis Dr., Santa Fe, NM 87505
Phone: (505) 478-3460 Fax: (505) 478-3462

State of New Mexico
Energy, Minerals & Natural Resources Department

OIL CONSERVATION DIVISION
1220 South St. Frances Dr.
Santa Fe, NM 87505

Form C-102
Revised August 1, 2011
Submit one copy to appropriate
District Office

HOBBS OCD
MAR 06 2018
RECEIVED

AMENDED REPORT

WELL LOCATION AND ACREAGE DEDICATION

API Number 30-025-44287	Pool Code 98230	Pool Name WC-025 G-09 S263620C; WOLFCAMP
Property Code 320494	Property Name BOSSHOG	Well Number 1H
OGRID No. 307600	Operator Name IMPETRO OPERATING, LLC	Elevation 2901'

Surface Location

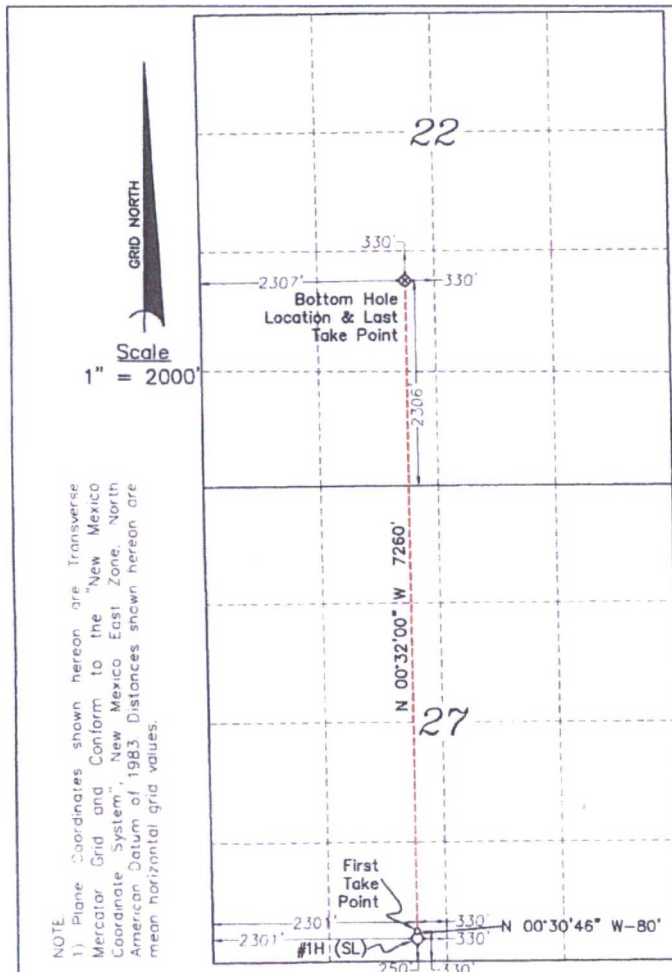
UL or lot No.	Section	Township	Range	Lot Idn	Feet from the	North/South line	Feet from the	East/West line	County
N	27	26 S	36 E		250	SOUTH	2301	WEST	LEA

Bottom Hole Location If Different From Surface

UL or lot No.	Section	Township	Range	Lot Idn	Feet from the	North/South line	Feet from the	East/West line	County
K	22	26 S	36 E		2306	SOUTH	2307	WEST	LEA

Dedicated Acres 160.40	Joint or Infill	Consolidation Code	Order No.
---------------------------	-----------------	--------------------	-----------

NO ALLOWABLE WILL BE ASSIGNED TO THIS COMPLETION UNTIL ALL INTERESTS HAVE BEEN CONSOLIDATED OR A NON-STANDARD UNIT HAS BEEN APPROVED BY THE DIVISION



LAST TAKE POINT LOCATION
& BOTTOM HOLE LOCATION
Plane Coordinate (NAD '83)
Y = 375,547.32
X = 875,794.53
Geodetic Coordinate (NAD '83)
Latitude = 32.02786701° N
Longitude = 103.25409975° W

FIRST TAKE POINT LOCATION
Plane Coordinate (NAD '83)
Y = 368,288.34
X = 875,862.08
Geodetic Coordinate (NAD '83)
Latitude = 32.00791379° N
Longitude = 103.25411570° W

SURFACE LOCATION
Plane Coordinate (NAD '83)
Y = 368,208.35
X = 875,862.80
Geodetic Coordinate (NAD '83)
Latitude = 32.00769392° N
Longitude = 103.25411597° W

OPERATOR CERTIFICATION

I hereby certify that the information contained herein is true and complete to the best of my knowledge and belief, and that this organization either owns a working interest or undivided mineral interest in the land including the proposed bottom hole location or has a right to drill this well at this location pursuant to a contract with an owner of such a mineral or working interest or to a voluntary pooling agreement or a compulsory pooling order heretofore entered by the division.

Signature: [Signature] Date: 3-6-18
Printed Name: JERRY SERNA
E-mail Address: JSERNA@LILISENERGY.COM

SURVEYOR CERTIFICATION

I hereby certify that the well location shown on this plat was plotted from field notes of actual surveys made by me or under my supervision, and that the same is true and correct to the best of my belief.

November 20, 2017

Date of Survey

Signature & Seal of Professional Surveyor

Signature: [Signature] Date: 02-06-18
Professional Surveyor Seal: LINDSAY GYGAX, NEW MEXICO, 23263

W.O. Num. 2018-008

Certificate No. Lindsay Gyax 23263