

District I

1625 N. French Dr., Hobbs, NM 88240

District II

1301 W. Grand, Artesia, NM 88210

District III

1000 Rio Brazos Rd., Aztec, NM 87410

District IV

1220 S. St. Francis Dr., Santa Fe, NM 87505

State of New Mexico
Energy, Minerals & Natural Resources Department

OIL CONSERVATION DIVISION

1220 South St. Francis Dr.

Santa Fe, NM 87505

Form C-102

Revised August 15, 2000

Submit to Appropriate District Office

State Lease - 4 Copies

Fee Lease - 3 Copies

☐ AMENDED REPORT

WELL LOCATION AND ACREAGE DEDICATION PLAT

¹ API Number 30-025-29457	² Pool Code	³ Pool Name ATOKA
⁴ Property Code 320484	⁵ Property Name Adobe Scott AYE	
⁷ OGRID No. 372233	⁸ Operator Name MAMMOTH EXPLORATION, LLC	
		⁶ Well Number 001Y
		⁹ Elevation 4071' GR

¹⁰ Surface Location

UL or lot no. J	Section 11	Township 15S	Range 34E	Lot Idn	Feet from the 1980	North/South line South	Feet from the 1730	East/West line East	County Lea
---------------------------	----------------------	------------------------	---------------------	---------	------------------------------	----------------------------------	------------------------------	-------------------------------	----------------------

¹¹ Bottom Hole Location If Different From Surface

UL or lot no.	Section	Township	Range	Lot Idn	Feet from the	North/South line	Feet from the	East/West line	County
¹² Dedicated Acres 320	¹³ Joint or Infill	¹⁴ Consolidation Code	¹⁵ Order No.						

NO ALLOWABLE WILL BE ASSIGNED TO THIS COMPLETION UNTIL ALL INTERESTS HAVE BEEN CONSOLIDATED OR
NON-STANDARD UNIT HAS BEEN APPROVED BY THE DIVISION

16		<p><i>Fee</i></p> <p>1730'</p> <p>1980'</p>	<p>¹⁷ OPERATOR CERTIFICATION</p> <p>I hereby certify that the information contained herein is true and complete to the best of my knowledge and belief.</p> <p>Signature <i>Stormi Davis</i></p> <p>Printed Name Stormi Davis</p> <p>Title Regulatory Compliance Technician</p> <p>Date 2-9-04</p>
			<p>¹⁸ SURVEYOR CERTIFICATION</p> <p>I hereby certify that the well location shown on this plat was plotted from field notes of actual surveys made by me or under my supervision, and that the same is true and correct to the best of my belief.</p> <p>Date of Survey</p> <p>Signature and Seal of Professional Surveyor:</p>
			<p>See Original Plat</p> <p>Certificate Number</p>

NEW MEXICO OIL CONSERVATION COMMISSION
 WELL LOCATION AND ACREAGE DEDICATION PLAT

Form C-102
 Supersedes C-126
 Effective 1-1-85

All distances must be from the outer boundaries of the Section.

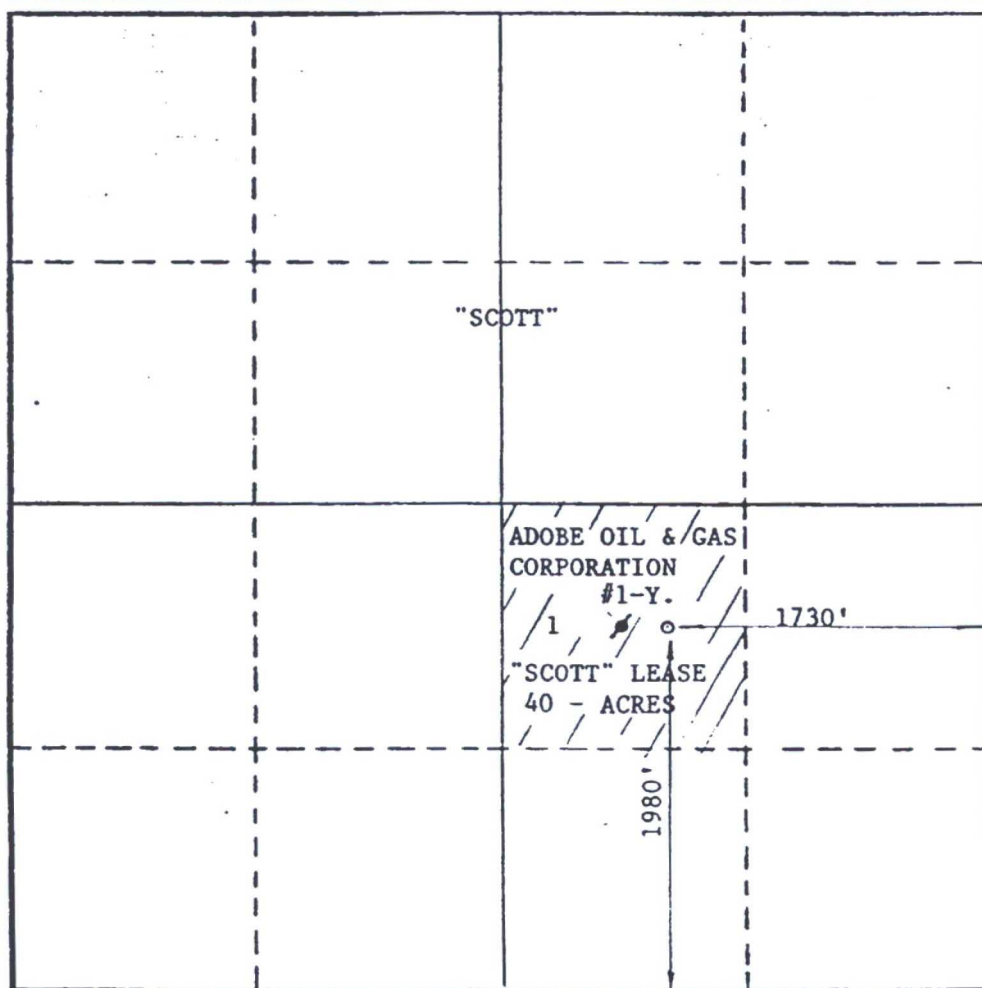
Operator ADOBE OIL & GAS CORPORATION			Lease SCOTT		Well No. 1-Y
Unit Letter "J"	Section 11	Township 15-S	Range 34-E	County LEA	
Actual Footage Location of Well: 1980 feet from the SOUTH line and 1730 feet from the EAST line					
Ground Level Elev. 4071	Producing Formation DEVONIAN		Pool WILDCAT		Dedicated Acreage: 40 Acres

1. Outline the acreage dedicated to the subject well by colored pencil or hachure marks on the plat below.
2. If more than one lease is dedicated to the well, outline each and identify the ownership thereof (both as to working interest and royalty).
3. If more than one lease of different ownership is dedicated to the well, have the interests of all owners been consolidated by communitization, unitization, force-pooling, etc?

☐ Yes ☐ No If answer is "yes," type of consolidation _____

If answer is "no," list the owners and tract descriptions which have actually been consolidated. (Use reverse side of this form if necessary.) _____

No allowable will be assigned to the well until all interests have been consolidated (by communitization, unitization, forced-pooling, or otherwise) or until a non-standard unit, eliminating such interests, has been approved by the Commission.



CERTIFICATION

I hereby certify that the information contained herein is true and complete to the best of my knowledge and belief.

Bill Owens

Name
bill Owens

Position
Vice President

Company
Adobe Oil & Gas Corp.

Date
October 14, 1985

I hereby certify that the well location shown on this plat was plotted from field notes of actual surveys made by me or under my supervision, and that the same is true and correct to the best of my knowledge and belief.

Date Surveyed
OCTOBER 14, 1985

Registered Professional Engineer and/or Land Surveyor

Max A. Schumann Jr.
MAX A. SCHUMANN JR

Certificate No.: 1510