

District I  
1625 N. French Dr., Hobbs, NM 88240  
Phone: (575) 393-6161 Fax: (575) 393-0720  
District II  
811 S. First St., Artesia, NM 88210  
Phone: (575) 748-1283 Fax: (575) 748-9720  
District III  
1000 Rio Brazos Road, Aztec, NM 87410  
Phone: (505) 334-6178 Fax: (505) 334-6170  
District IV  
1220 S. St. Francis Dr., Santa Fe, NM 87505  
Phone: (505) 476-3460 Fax: (505) 476-3462

State of New Mexico  
Energy, Minerals & Natural Resources Department  
OIL CONSERVATION DIVISION  
1220 South St. Francis Dr.  
Santa Fe, NM 87505

Form C-102  
Revised August 1, 2011  
Submit one copy to appropriate  
District Office

☐ AMENDED REPORT

WELL LOCATION AND ACREAGE DEDICATION PLAT

<sup>1</sup> API Number 30-025- <b>44691</b>	<sup>2</sup> Pool Code 44500	<sup>3</sup> Pool Name Maljamar; Yeso West
<sup>4</sup> Property Code <b>720830</b>	<sup>5</sup> Property Name PERIDOT 8 FEDERAL	<sup>6</sup> Well Number 12H
<sup>7</sup> OGRID No. 217817	<sup>8</sup> Operator Name ConocoPhillips Company	<sup>9</sup> Elevation 4046.0'

<sup>10</sup> Surface Location

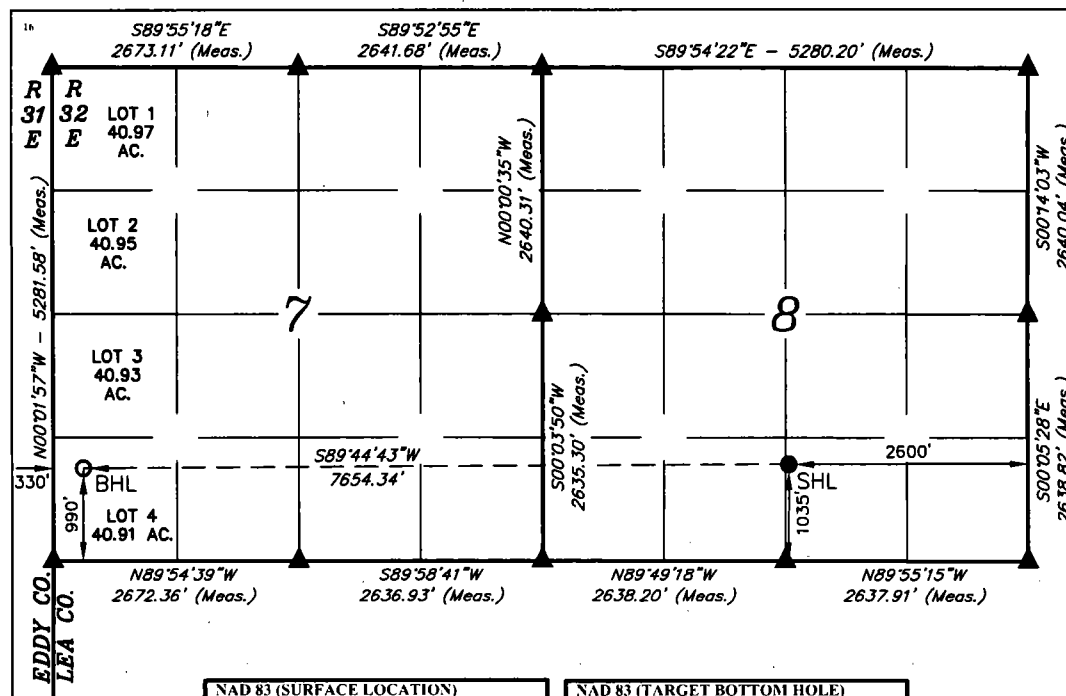
UL or lot no.	Section	Township	Range	Lot Idn	Feet from the	North/South line	Feet from the	East/West line	County
O	8	17S	32E		1035	SOUTH	2600	EAST	LEA

<sup>11</sup> Bottom Hole Location If Different From Surface

UL or lot no.	Section	Township	Range	Lot Idn	Feet from the	North/South line	Feet from the	East/West line	County
LOT 4	7	17S	32E		990	SOUTH	330	WEST	LEA

<sup>12</sup> Dedicated Acres 280.91	<sup>13</sup> Joint or Infill 240.71	<sup>14</sup> Consolidation Code	<sup>15</sup> Order No.
---	---	----------------------------------	-------------------------

No allowable will be assigned to this completion until all interests have been consolidated or a non-standard unit has been approved by the division.



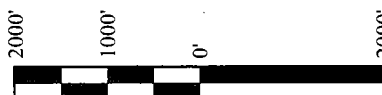
<b>NAD 83 (SURFACE LOCATION)</b>
LATITUDE = 32°50'41.15" (32.844764)
LONGITUDE = 103°47'18.66" (103.788517)
<b>NAD 27 (SURFACE LOCATION)</b>
LATITUDE = 32°50'40.72" (32.844644)
LONGITUDE = 103°47'16.84" (103.788011)
<b>STATE PLANE NAD 83 (N.M. EAST)</b>
N: 671489.31 E: 708658.27
<b>STATE PLANE NAD 27 (N.M. EAST)</b>
N: 671424.97 E: 667479.94

<b>NAD 83 (TARGET BOTTOM HOLE)</b>
LATITUDE = 32°50'40.80" (32.844667)
LONGITUDE = 103°48'48.36" (103.813433)
<b>NAD 27 (TARGET BOTTOM HOLE)</b>
LATITUDE = 32°50'40.37" (32.844547)
LONGITUDE = 103°48'46.54" (103.812928)
<b>STATE PLANE NAD 83 (N.M. EAST)</b>
N: 671415.65 E: 701006.17
<b>STATE PLANE NAD 27 (N.M. EAST)</b>
N: 671351.40 E: 659827.76

NOTE:

- Distances referenced on plat to section lines are perpendicular.
- Basis of Bearing is a Transverse Mercator Projection with a Central Meridian of W103°53'00"

- = SURFACE HOLE LOCATION
- = BOTTOM HOLE LOCATION
- ▲ = SECTION CORNER LOCATED



SCALE

DRAWN BY: S.S. 07-13-17

<sup>17</sup> OPERATOR CERTIFICATION

I hereby certify that the information contained herein is true and complete to the best of my knowledge and belief, and that this organization either owns a working interest or unleased mineral interest in the land including the proposed bottom hole location or has a right to drill this well at this location pursuant to a contract with an owner of such a mineral or working interest, or to a voluntary pooling agreement or a compulsory pooling order heretofore entered by the division.

*Susan B. Maunder* 9/28/17  
Signature Date

Susan B. Maunder

Printed Name

Susan.B.Maunder@conocophillips.com

E-mail Address

<sup>18</sup> SURVEYOR CERTIFICATION

I hereby certify that the well location shown on this plat was plotted from field notes of actual surveys made by me or under my supervision, and that the same is true and correct to the best of my belief.

June 23, 2017

Date of Survey

Signature and Seal of Professional Surveyor:



Certificate Number: