

DISTRICT I
1626 N. FRENCH DR., HOBBS, NM 88240
Phone: (575) 393-0101 Fax: (575) 393-0720

DISTRICT II
811 S. FIRST ST., ARTESIA, NM 88210
Phone: (575) 748-1283 Fax: (575) 748-8720

DISTRICT III
1000 RIO BRAZOS RD., AZTEC, NM 87410
Phone: (505) 334-6178 Fax: (505) 334-6170

DISTRICT IV
1220 S. ST. FRANCIS DR., SANTA FE, NM 87505
Phone: (505) 476-3460 Fax: (505) 476-3482

State of New Mexico
Energy, Minerals & Natural Resources Department
OIL CONSERVATION DIVISION
1220 SOUTH ST. FRANCIS DR.
Santa Fe, New Mexico 87505
MAR 09 2018

Form C-102
Revised August 1, 2011
Submit one copy to appropriate
District Office

☐ AMENDED REPORT

WELL LOCATION AND ACREAGE DEDICATION PLAT

API Number 70-025-44596	Pool Code 96776	Pool Name JABALINA; WOLFCAMP, SOUTHWEST
Property Code 320992	Property Name MEAN GREEN 23-35 FED COM	Well Number 2H
OGRID No. 6137	Operator Name DEVON ENERGY PRODUCTION COMPANY, L.P.	Elevation 3193.3'

Surface Location

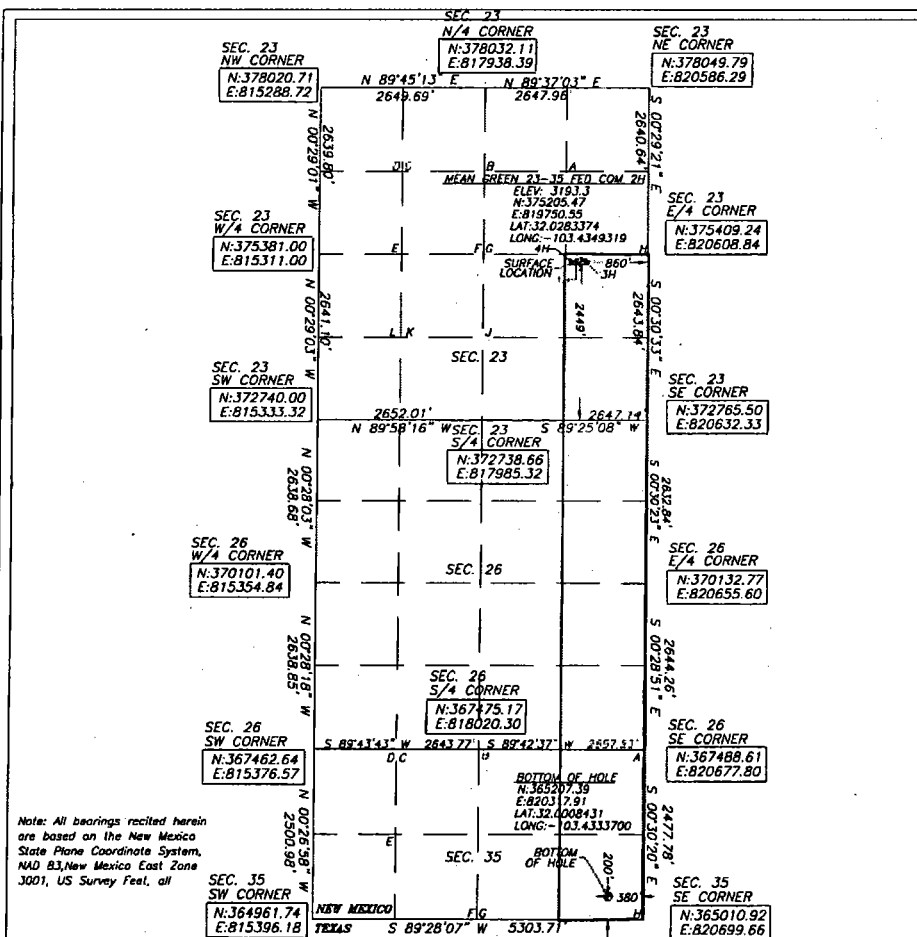
UL or lot No.	Section	Township	Range	Lot Idn	Feet from the	North/South line	Feet from the	East/West line	County
1	23	26-S	34-E		2449	SOUTH	860	EAST	LEA

Bottom Location If Different From Surface

UL or lot No.	Section	Township	Range	Lot Idn	Feet from the	North/South line	Feet from the	East/West line	County
1	35	26-S	34-E		200	SOUTH	380	EAST	LEA

Dedicated Acres	Joint or Infill	Consolidation Code	Order No.
315.2			

NO ALLOWABLE WILL BE ASSIGNED TO THIS COMPLETION UNTIL ALL INTERESTS HAVE BEEN CONSOLIDATED
OR A NON-STANDARD UNIT HAS BEEN APPROVED BY THE DIVISION



OPERATOR CERTIFICATION

I hereby certify that the information herein is true and complete to the best of my knowledge and belief, and that this organization either owns a working interest or unleased mineral interest in the land including the proposed bottom hole location or has a right to drill this well at this location pursuant to a contract with an owner of such mineral or working interest, or to a voluntary pooling agreement or a compulsory pooling order heretofore entered by the division.

Signature: *Rebecca Deal* Date: 05/25/2017

Rebecca Deal, Regulatory Analyst
Printed Name

rebecca.deal@dmv.com
E-mail Address

SURVEYOR CERTIFICATION

I hereby certify that the well location shown on this plat was plotted from field notes of actual surveys made by me or under my supervision, and that the same is true and correct to the best of my belief.

Signature: *B.L. Laman*

Signature & Seal of Professional Surveyor



05/25/17
Certificate No. 22404 B.L. LAMAN
W.O. # DRAWN BY: CM

Last Take Point: 330' FSL & 380' FWL