

DISTRICT I  
1625 N. French Dr., Hobbs, NM 88240

DISTRICT II  
811 South First, Artesia, NM 88210

DISTRICT III  
1000 Rio Brazos Rd., Aztec, NM 87410

DISTRICT IV  
2040 South Pacheco, Santa Fe, NM 87505

State of New Mexico  
Energy, Minerals and Natural Resources Department

Form C-102  
Revised August 1, 2011

Submit one copy to Appropriate  
District Office

OIL CONSERVATION DIVISION

1220 South St. Francis Dr.  
Santa Fe, New Mexico 87505

☐ AMENDED REPORT

WELL LOCATION AND ACREAGE DEDICATION PLAT

API Number <b>30-025-44607</b>	Pool Code <b>98008</b>	Pool Name <b>WC-025-09-0846502M, WOLFPORE</b>
Property Code <b>317499</b>	Property Name <b>ANGUS STATE 24-35 16</b>	Well Number <b>456H</b>
OCRID No. <b>162928</b>	Operator Name <b>ENERGEN RESOURCES CORPORATION</b>	Elevation <b>3366'</b>

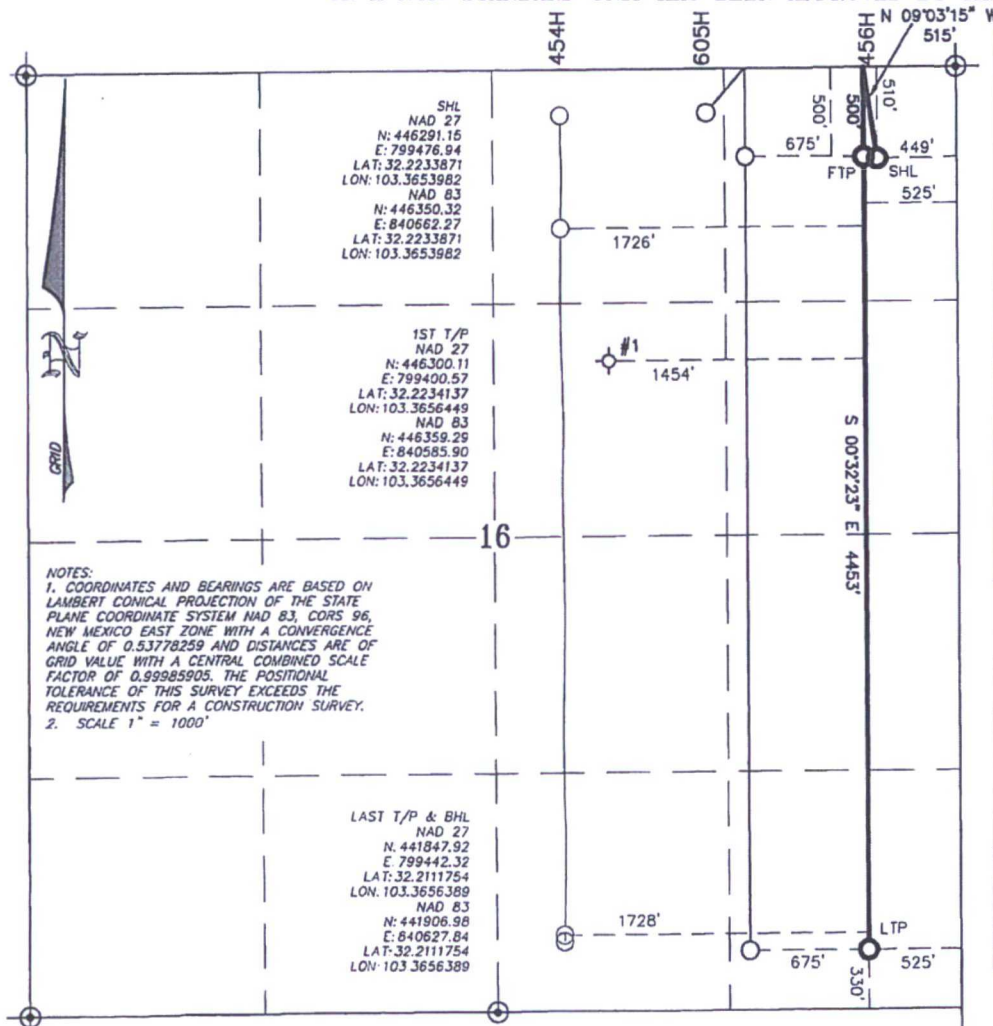
Surface Location

UL or lot No.	Section	Township	Range	Lot Idn	Feet from the	North/South line	Feet from the	East/West line	County
<b>A</b>	<b>16</b>	<b>24-S</b>	<b>35-E</b>		<b>510'</b>	<b>NORTH</b>	<b>449'</b>	<b>EAST</b>	<b>LEA</b>

Bottom Hole Location If Different From Surface

UL or lot No.	Section	Township	Range	Lot Idn	Feet from the	North/South line	Feet from the	East/West line	County
<b>P</b>	<b>16</b>	<b>24-S</b>	<b>35-E</b>		<b>330'</b>	<b>SOUTH</b>	<b>525'</b>	<b>EAST</b>	<b>LEA</b>
Dedicated Acres <b>160</b>	Joint or Infill	Consolidation Code	Order No.						

NO ALLOWABLE WILL BE ASSIGNED TO THIS COMPLETION UNTIL ALL INTERESTS HAVE BEEN CONSOLIDATED  
OR A NON-STANDARD UNIT HAS BEEN APPROVED BY THE DIVISION



OPERATOR CERTIFICATION

I hereby certify that the information contained herein is true and complete to the best of my knowledge and belief, and that this organization either owns a working interest or unleased mineral interest in the land including the proposed bottom hole location or has a right to drill this well at this location pursuant to a contract with an owner of such a mineral or working interest, or to a voluntary pooling agreement or compulsory pooling order heretofore entered by the division.

Signature **Brenda F. Rathjen** Date **3/8/2018**  
Printed Name  
Date

SURVEYOR CERTIFICATION

I hereby certify that the well location shown on this plat was plotted from field notes of actual surveys made by me or under my supervision, and that the same is true and correct to the best of my belief.

PROFESSIONAL SURVEYOR  
STATE OF NEW MEXICO  
FEBRUARY 29, 2018  
Date Surveyed  
Signature & Seal of Professional Surveyor  
WILSON D. WATSON, JR.  
MARCH 2, 2018  
Signature Date  
Certificate No. WILSON D. WATSON JR.  
P.L.S. #3959  
WATSON PROFESSIONAL GROUP INC

DISTRICT I  
1625 N. French Dr., Hobbs, NM 88240  
DISTRICT II  
811 South First, Artesia, NM 88210  
DISTRICT III  
1000 Rio Brazos Rd., Aztec, NM 87410  
DISTRICT IV  
2040 South Pacheco, Santa Fe, NM 87505

State of New Mexico  
Energy, Minerals and Natural Resources Department

Form C-102  
Revised August 1, 2011

Submit one copy to Appropriate  
District Office

OIL CONSERVATION DIVISION

1220 South St. Francis Dr.  
Santa Fe, New Mexico 87505

☐ AMENDED REPORT

WELL LOCATION AND ACREAGE DEDICATION PLAT

API Number	Pool Code 98098	Pool Name WC-025 G-09 S243532M; WOLFBONE
Property Code 317499	Property Name ANGUS STATE 24-35 16	Well Number 456H
GRID No. 162928	Operator Name ENERGEN RESOURCES CORPORATION	Elevation 3386'

Surface Location

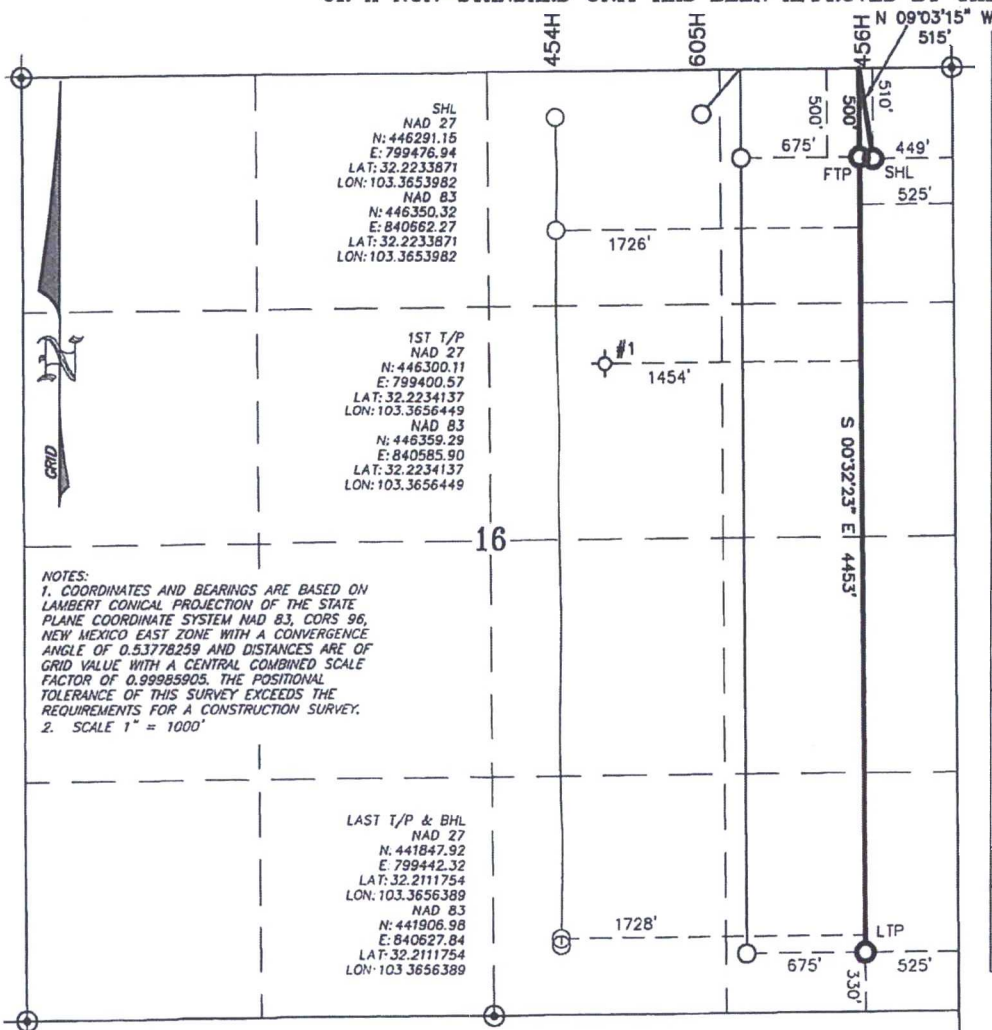
UL or lot No. A	Section 16	Township 24-S	Range 35-E	Lot Idn	Feet from the 510'	North/South line NORTH	Feet from the 449'	East/West line EAST	County LEA
--------------------	---------------	------------------	---------------	---------	-----------------------	---------------------------	-----------------------	------------------------	---------------

Bottom Hole Location If Different From Surface

UL or lot No. P	Section 16	Township 24-S	Range 35-E	Lot Idn	Feet from the 330'	North/South line SOUTH	Feet from the 525'	East/West line EAST	County LEA
--------------------	---------------	------------------	---------------	---------	-----------------------	---------------------------	-----------------------	------------------------	---------------

Dedicated Acres 160	Joint or Infill	Consolidation Code	Order No.
------------------------	-----------------	--------------------	-----------

NO ALLOWABLE WILL BE ASSIGNED TO THIS COMPLETION UNTIL ALL INTERESTS HAVE BEEN CONSOLIDATED  
OR A NON-STANDARD UNIT HAS BEEN APPROVED BY THE DIVISION



OPERATOR CERTIFICATION

I hereby certify that the information contained herein is true and complete to the best of my knowledge and belief, and that this organization either owns a working interest or unleased mineral interest in the land including the proposed bottom hole location or has a right to drill this well at this location pursuant to a contract with an owner of such a mineral or working interest, or to a voluntary pooling agreement or compulsory pooling order heretofore entered by the division.

Brenda Rathjen  
Signature Date  
Brenda F. Rathjen  
Printed Name  
3/8/2018  
Date

SURVEYOR CERTIFICATION

I hereby certify that the well location shown on this plat was plotted from field notes of actual surveys made by me or under my supervision, and that the same is true and correct to the best of my belief.

WILSON D. WATSON, JR.  
REGISTERED PROFESSIONAL ENGINEER  
STATE OF NEW MEXICO  
FEBRUARY 20, 2018  
Date Surveyed  
Signature & Seal of  
Professional Surveyor  
No. 3959

MARCH 2, 2018  
Signature Date  
Certificate No. WILSON D. WATSON JR.  
P.L.S. #3959  
WATSON PROFESSIONAL GROUP INC