

District I  
1625 N. French Dr., Hobbs, NM 88240  
Phone: (575) 393-6161 Fax: (575) 393-0720  
District II  
811 S. First St., Artesia, NM 88210  
Phone: (575) 748-1283 Fax: (575) 748-9912  
District III  
1000 Rio Brazos Road, Aztec, NM 87410  
Phone: (505) 334-6178 Fax: (505) 334-6170  
District IV  
1220 S. St. Francis Dr., Santa Fe, NM 87505  
Phone: (505) 476-3460 Fax: (505) 476-3462

State of New Mexico  
Energy, Minerals & Natural Resources Department  
OIL CONSERVATION DIVISION  
1220 South St. Francis Dr.  
Santa Fe, NM 87505

Form C-102  
Revised August 1, 2011  
Submit one copy to appropriate  
District Office

☐ AMENDED REPORT

WELL LOCATION AND ACREAGE DEDICATION PLAT

<sup>1</sup> API Number 30-025-43135	<sup>2</sup> Pool Code 41842	<sup>3</sup> Pool Name LUKE, BOKE SPRING, EAST
<sup>4</sup> Property Code 319587	<sup>5</sup> Property Name CRAZY WOLF 1/2 B2MM FEDERAL COM	<sup>6</sup> Well Number 1H
<sup>7</sup> OGRID No. 141077	<sup>8</sup> Operator Name CENTENNIAL RESOURCE PRODUCTION, LLC	<sup>9</sup> Elevation 3670.5'

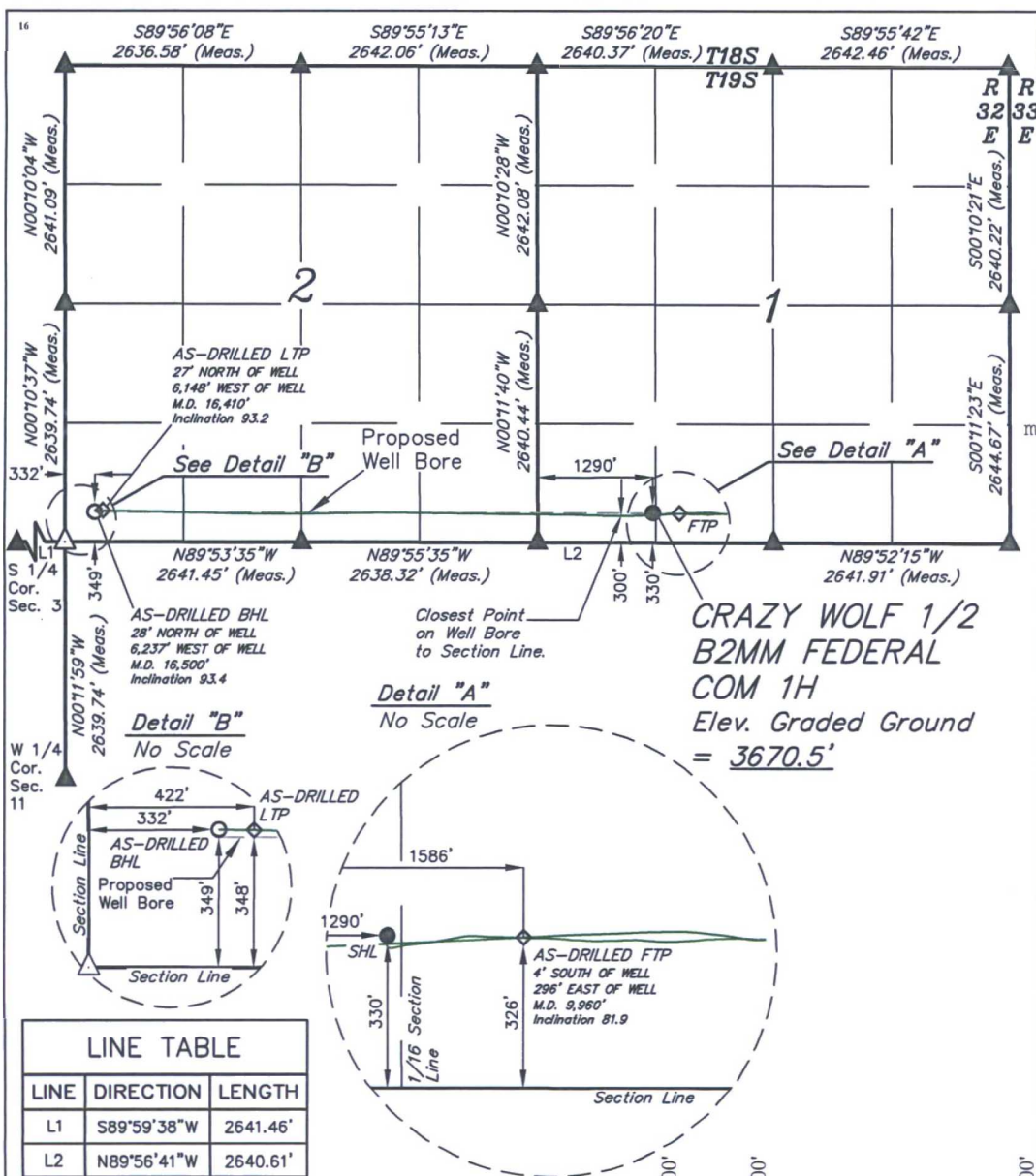
<sup>10</sup> Surface Location

UL or lot no.	Section	Township	Range	Lot Idn	Feet from the	North/South line	Feet from the	East/West line	County
M	1	19S	32E		330	SOUTH	1290	WEST	LEA

<sup>11</sup> Bottom Hole Location If Different From Surface

UL or lot no.	Section	Township	Range	Lot Idn	Feet from the	North/South line	Feet from the	East/West line	County
M	2	19S	32E		349	SOUTH	332	WEST	LEA
<sup>12</sup> Dedicated Acres 240	<sup>13</sup> Joint or Infill	<sup>14</sup> Consolidation Code	<sup>15</sup> Order No.						

No allowable will be assigned to this completion until all interests have been consolidated or a non-standard unit has been approved by the division.



LINE TABLE		
LINE	DIRECTION	LENGTH
L1	S89°59'38\"W	2641.46'
L2	N89°56'41\"W	2640.61'

NOTE:

- Distances referenced on plat to section lines are perpendicular.
- Basis of Bearings is a Transverse Mercator Projection with a Central Meridian of W103°53'00\"
- Well Bore data provided by Centennial Resource Production, LLC

- = SURFACE HOLE LOCATION
- ◇ = AS-DRILLED PP/FTP/LTP
- = AS-DRILLED BHL
- ▲ = SECTION CORNER LOCATED
- △ = SECTION CORNER RE-ESTABLISHED.  
(Not Set on Ground.)

<sup>17</sup> OPERATOR CERTIFICATION

I hereby certify that the information contained herein is true and complete to the best of my knowledge and belief, and that this organization either owns a working interest or unleased mineral interest in the land including the proposed bottom hole location or has a right to drill this well at this location pursuant to a contract with an owner of such a mineral or working interest, or to a voluntary pooling agreement or a compulsory pooling order heretofore entered by the division.

Digitally signed by Melissa Luke  
DN: cn=Melissa Luke, o=US  
s=Centennial Resource Production,  
LLC, ou=St. Regulatory Analyst,  
email=melissa.luke@cdevinc.com  
Date: 2018.02.27 12:13:02 -0700

Melissa Luke

Printed Name

melissa.luke@cdevinc.com

E-mail Address

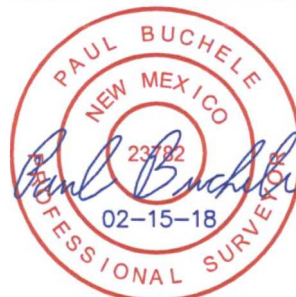
<sup>18</sup> SURVEYOR CERTIFICATION

I hereby certify that the well location shown on this plat was plotted from field notes of actual surveys made by me or under my supervision, and that the same is true and correct to the best of my belief.

February 14, 2018

Date of Survey

Signature and Seal of Professional Surveyor:



Certificate Number:

SCALE

DRAWN BY: C.D. 02-12-18

NAD 83 (AS-DRILLED SHL)
LATITUDE = 32°40'58.88\" (32.683021°)
LONGITUDE = 103°43'27.02\" (103.724171°)
STATE PLANE NAD 83 (N.M. EAST)
Y: 612752.26' X: 728758.67'
UTM, NAD 83 (ZONE 13)
Y: 11866336.88' X: 2032840.70'
NAD 83 (AS-DRILLED LTP)
LATITUDE = 32°40'59.22\" (32.683118°)
LONGITUDE = 103°44'38.93\" (103.744148°)
STATE PLANE NAD 83 (N.M. EAST)
Y: 612752.69' X: 722612.23'
UTM, NAD 83 (ZONE 13)
Y: 11866298.69' X: 2026695.46'

NAD 83 (AS-DRILLED FTP)
LATITUDE = 32°40'58.83\" (32.683009°)
LONGITUDE = 103°43'23.55\" (103.723209°)
STATE PLANE NAD 83 (N.M. EAST)
Y: 612749.39' X: 729054.72'
UTM, NAD 83 (ZONE 13)
Y: 11866335.86' X: 2033136.71'
NAD 83 (AS-DRILLED BHL)
LATITUDE = 32°40'59.24\" (32.683121°)
LONGITUDE = 103°44'39.98\" (103.744440°)
STATE PLANE NAD 83 (N.M. EAST)
Y: 612753.55' X: 722522.41'
UTM, NAD 83 (ZONE 13)
Y: 11866298.98' X: 2026605.64'