

UNITED STATES
DEPARTMENT OF THE INTERIOR
BUREAU OF LAND MANAGEMENTFORM APPROVED
OMB NO. 1004-0137
Expires: January 31, 2018**SUNDRY NOTICES AND REPORTS ON WELLS**
*Do not use this form for proposals to drill or to re-enter an abandoned well. Use form 3160-3 (APD) for such proposals.*5. Lease Serial No.
NMLC063798

6. If Indian, Allottee or Tribe Name

7. If Unit or CA/Agreement, Name and/or No.

SUBMIT IN TRIPLICATE - Other instructions on page 2

1. Type of Well

☒ Oil Well ☐ Gas Well ☐ Other

2. Name of Operator

DEVON ENERGY PRODUCTION COMPANY

Contact: REBECCA DEAL

E-Mail: Rebecca.Deal@dnv.com

3a. Address

6488 SEVEN RIVERS HIGHWAY
ARTESIA, NM 88211

3b. Phone No. (include area code)

Ph: 405-228-8429

4. Location of Well (Footage, Sec., T., R., M., or Survey Description)

Sec 14 T23S R33E NWNW 200FNL 233FWL

8. Well Name and No.

BOOMSLANG 14 23 FED 3H

9. API Well No.

30-025-43309-00-X1

10. Field and Pool or Exploratory Area

RED HILLS-BONE SPRING, NORTH

11. County or Parish, State

LEA COUNTY, NM

Carlsbad Field Office**OCD Hobbs**

12. CHECK THE APPROPRIATE BOX(ES) TO INDICATE NATURE OF NOTICE, REPORT, OR OTHER DATA

TYPE OF SUBMISSION

TYPE OF ACTION

☒ Notice of Intent☐ Subsequent Report☐ Final Abandonment Notice☐ Acidize☐ Alter Casing☐ Casing Repair☐ Change Plans☐ Convert to Injection☐ Deepen☐ Hydraulic Fracturing☐ New Construction☐ Plug and Abandon☐ Plug Back☐ Production (Start/Resume)☐ Reclamation☐ Recomplete☐ Temporarily Abandon☐ Water Disposal☐ Water Shut-Off☐ Well Integrity☒ Other

13. Describe Proposed or Completed Operation: Clearly state all pertinent details, including estimated starting date of any proposed work and approximate duration thereof. If the proposal is to deepen directionally or recompleat horizontally, give subsurface locations and measured and true vertical depths of all pertinent markers and zones. Attach the Bond under which the work will be performed or provide the Bond No. on file with BLM/BIA. Required subsequent reports must be filed within 30 days following completion of the involved operations. If the operation results in a multiple completion or recompleat in a new interval, a Form 3160-4 must be filed once testing has been completed. Final Abandonment Notices must be filed only after all requirements, including reclamation, have been completed and the operator has determined that the site is ready for final inspection.

Braden Head Squeeze Procedure Request

While prepping the Boomslang 14-23 Fed 3H well for completion we ran a SLB Isolation Scanner Log to confirm top of cement.

The attached log shows that we saw reduced quality cement shows above 7,000? MD and nothing inside our intermediate casing shoe @ 2,288? MD or higher.

We confirmed with an attempted backside pressure test. The result was establishing injection at less than 400 psi.

Path forward will be to pump a braden head squeeze, injecting cement down the production casing

14. I hereby certify that the foregoing is true and correct.

Electronic Submission #392789 verified by the BLM Well Information System

For DEVON ENERGY PRODUCTION COMPANY LP, sent to the Hobbs

Committed to AFMSS for processing by DEBORAH MCKINNEY on 11/09/2017 (18DLM0069SE)

Name (Printed/Typed) REBECCA DEAL

Title REGULATORY COMPLIANCE PROFESSI

Signature (Electronic Submission)

Date 10/23/2017

THIS SPACE FOR FEDERAL OR STATE OFFICE USE

Approved By ZOTIA STEVENS

Title PETROLEUM ENGINEER

Date 03/05/2018

Conditions of approval, if any, are attached. Approval of this notice does not warrant or certify that the applicant holds legal or equitable title to those rights in the subject lease which would entitle the applicant to conduct operations thereon.

Office Hobbs

Title 18 U.S.C. Section 1001 and Title 43 U.S.C. Section 1212, make it a crime for any person knowingly and willfully to make to any department or agency of the United States any false, fictitious or fraudulent statements or representations as to any matter within its jurisdiction.

(Instructions on page 2)

**** BLM REVISED ** BLM REVISED ** BLM REVISED ** BLM REVISED ** BLM REVISED ****

msb/ocd 3/19/2018

Additional data for EC transaction #392789 that would not fit on the form

32. Additional remarks, continued

backside and displacing it across the intermediate casing shoe.

Please see attached the procedure for more detail. Logs will be sent separately - file too large to attach.

Boomslang and Blue Krait wells – Completion Procedure

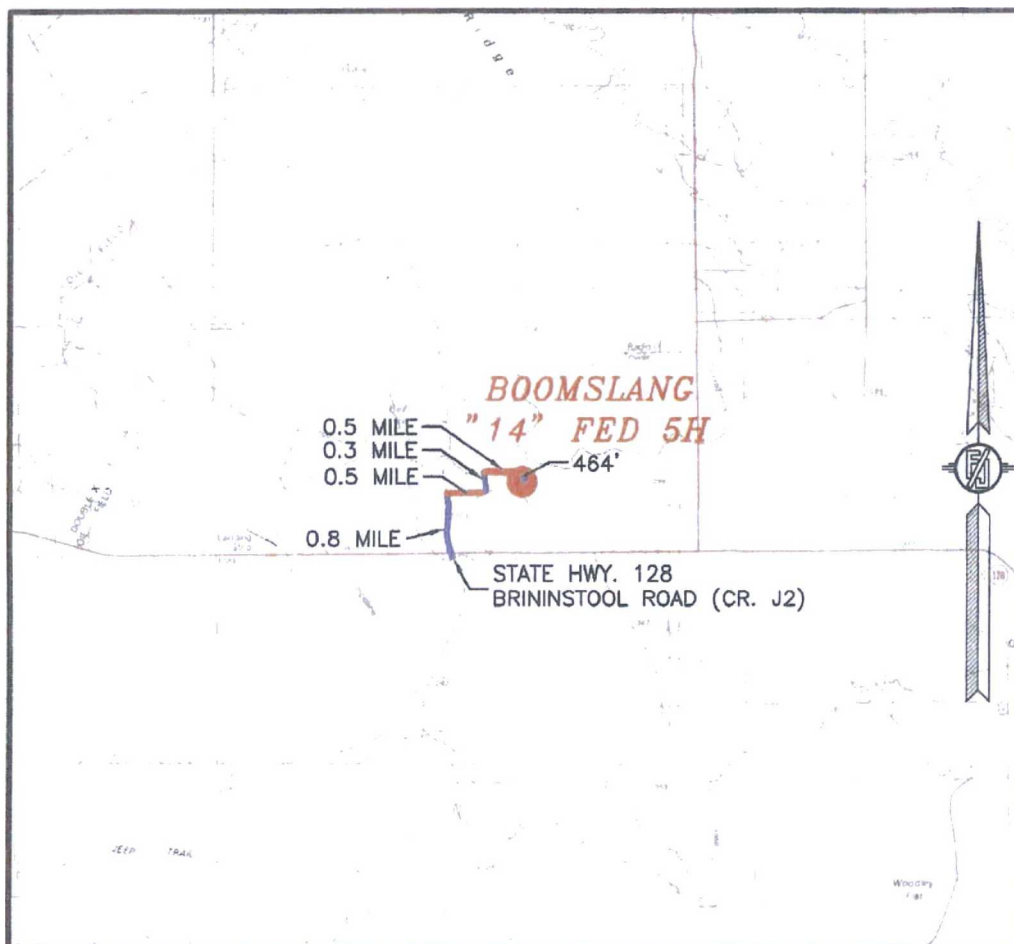
SHL: Sec 14 and 23 of 22S, 33E
Lea County, NM

Objective:

Complete an 11 well package of 2nd Bone Spring and Leonard shale wells.

DIRECTIONS TO LOCATION

FROM THE INTERSECTION OF STATE HWY #128 AND BRININSTOOL ROAD (CR. J2) GO NORTH ON BRININSTOOL ROAD APPROX. 0.8 MILE TO A LEASE ROAD ON RIGHT (EAST) TURN EAST GO APPROX. 0.5 MILE ROAD TURNS LEFT (NORTH) GO NORTH APPROX. 0.3 MILE ROAD TURNS RIGHT (EAST) GO EAST APPROX 0.5 MILE TO A ROAD LATH WITH RED AND WHITE FLAGGING ON RIGHT (SOUTH) OF ROAD GO SOUTH FOLLOW ROAD LATHS APPROX. 464 FT TO LOCATION



DISTANCES IN MILE

NOT TO SCALE

EHS:

- All personnel will wear hard hats, safety glasses (side shields), FRC, and steel-toed boots while on location and follow all company policies
- Perform tailgate safety meeting / JSA before each major task and 12 hour shift change

Completion Notes:

- Well prep can be scheduled to match frac order/schedule.
-

Devon Contacts

Devon Contacts	Contact	Office	Office Phone	Cell Phone	E-mail Address
CMP Engineer	Dan McCarty	OKC	1(405)228-3095	1(405)446-9366	Dan.McCarty@dvn.com
Foreman CMP	Kelly Whitehead	Artesia	1(575)748-1834	1(575)513-4657	Kelly.Whitehead@dvn.com
Foreman CMP	Danny Velo	Artesia	1(575)746-5572	1(575)703-3360	Danny.Velo@dvn.com
Sand Coordinator	Mark Briney	OKC	(405)552-4504	(405)833-4771	Mark.Briney@dvn.com
Production Foreman	Hubert Perry	Artesia	(575)746-5571	(575)513-9637	Hubert.Perry@dvn.com

Service Co. Contacts

Service Co.	Contact	Office	Phone	E-mail Address
FTS International	Justin McAtee		405-200-9237	Justin.McAtee@ftsi.com
API	Rodney Browning		817-437-4746	Wr.browning@apiperforating.com
Innospec	Arron Karcher		713-673-9513	Arron.karcher@innspecinc.com
Solaris	Clifton Chapman		817-371-3355	clifton.chapmon@solarisoilfield.com
Texas Pride	Matt Haile	817-221-1200	682-229-6992	m.haile@texaspridefuels.com

Well Specific Information:

Well Name	Formation Target	WBS #	API #	Casing Type	TD
Boomslang 14-23 Fed 3H	2NDBSS	XX-109297.01.CMP	3002543309	5-1/2" P-110RY 17#	21,180' MD
Boomslang 14-23 Fed 9H	1STBSS	XX-115711.01.CMP	3002543032	5-1/2" P-110RY 17#	20,440' MD
Blue Krait 23-14 Fed 2H	LEO A	XX-107579.01.CMP	3002543236	5-1/2" P-110RY 17#	21,114' MD
Boomslang 14-23 Fed 1H	LEO A	XX-109091.01.CMP	3002542920	5-1/2" P-110RY 17#	19,300' MD
Boomslang 14-23 Fed 4H	2NDBSS	XX-109090.01.CMP	3002542933	5-1/2" P-110RY 17#	21,110' MD
Blue Krait 23 Fed 3H	LEO A	XX-107549.01.CMP	3002543237	5-1/2" P-110RY 17#	14,150' MD
Blue Krait 23 Fed 4H	2NDBSS	XX-111504.01.CMP	3002543238	5-1/2" P-110RY 17#	15,818' MD
Blue Krait 23 Fed 6H	LEO A	XX-111956.01.CMP	3002543239	5-1/2" P-110RY 17#	14,170' MD
Boomslang 14-23 Fed 2H	2NDBSS	XX-109295.01.CMP	3002543308	5-1/2" P-110RY 17#	19,432' MD
Blue Krait 23-14 Fed 1H	LEO A	XX-107578.01.CMP	3002543011	5-1/2" P-110RY 17#	19,302' MD
Blue Krait 23-14 Fed 5H	LEO A	XX-111955.01.CMP	3002543012	5-1/2" P-110RY 17#	19,410' MD

Well Name	Toe Sleeve Type	Toe Sleeve Activation Pressure	Toe Sleeve Depth	Lateral Length	Frac Phase
Boomslang 14-23 Fed 3H	TAM PTS	5,974	21,027' MD	2.0 Mile	1
Boomslang 14-23 Fed 9H	TAM PTS	6,290	20,282' MD	2.0 Mile	1
Blue Krait 23-14 Fed 2H	TEAM ORIO	5,236	20,958' MD	2.0 Mile	2
Boomslang 14-23 Fed 1H	TAM PTS	5,967	19,150' MD	2.0 Mile	3
Boomslang 14-23 Fed 4H	TEAM ORIO	7,439	20,965' MD	2.0 Mile	3
Blue Krait 23 Fed 3H	TAM PTS	5,943	13,995' MD	1.0 Mile	4
Blue Krait 23 Fed 4H	TAM PTS	5,166	15,667' MD	1.0 Mile	4
Blue Krait 23 Fed 6H	TAM PTS	5,971	14,012' MD	1.0 Mile	4
Boomslang 14-23 Fed 2H	TAM PTS	6,017	19,275' MD	2.0 Mile	5
Blue Krait 23-14 Fed 1H	TAM PTS	6,837	19,155' MD	2.0 Mile	6
Blue Krait 23-14 Fed 5H	TAM PTS	5,942	19,255' MD	2.0 Mile	6

Prep Procedure:

1. Set and test safety anchors. (if needed)
2. Check for pressure under the night cap, ND night cap.
3. NU 10K tubing head, ensure 2x casing valves are installed on each side outlet. Test seal void to 5,000 psi, body will be tested with frac tree.
4. NU two lower master frac valves (7-1/16" 10M manual on bottom, 7-1/16" 10M hydraulic above as the middle master) and flow cross (4-1/16" 10M x 3" 1502 WECO). RU flowback lines to flow cross. Dry rod out 5" BPV, install 5" two way check, pressure test tubing head, master valves and flow cross to 9,500 psi. Pull two way check.

NOTE: Contact Dan McCarty at **405-446-9366** if any issues are found.

5. MIRU e-line. RIH w/ gauge ring and then make up and run Weatherford URS until tool will no longer fall. Log to surface with 1,500 psi on the well. Note TOC. TOC must be above 4500' MD. If TOC is not above this point, contact Kelly Whitehead @ (575)513-4657 & Dan McCarty @ 1(405)446-9366. POOH. RDMO e-line.
 - A. Ensure Temp log track of Weatherford URS is calibrated to appropriate surface temperature.
 - B. The Production casing cement job was a two stage; 11.0 lead and 13.2 ppg
 - C. Ensure one copy of the RCBL is given to the field consultant for perforating correlation. Email the RCBL to Dan.McCarty@dvn.com and DCWellFileWestern@dvn.com and send three hardcopies to the OKC office, C/O Dan
6. MIRU Pump Trucks (capable of achieving 15 bpm @ 8000 psi) and 15 bbls of 15% HCl NEFE inhibited acid.

FOR TAM PTS TOE SLEEVES – follow Steps 7-8

7. Pressure test 5-1/2" 17#/ft P110RY casing to 4,500 psi by walking up pressure in 1,500psi increments. Test for 15 mins at 4,500 psi. Ensure no surface leaks or pressure fall off, bleed off pressure and burp surface lines of air in needed. Walk the pressure back up to 6,000 psi then continue to 8,500 psi for full 30 minutes pressure test.
 - A. Pressure test must be Charted and documented in Wellview. Include well name, date, witness(PIC) w/signature on the chart and scan/send to Dan.McCarty@dvn.com.
 - B. If 100 psi pressure loss or an odd pressure breaks are observed, contact completion engineer and completion foreman to discuss contingencies.
8. After successful pressure test, bleed pressure off the casing quickly, which should activate the sleeve to open. At this point we should now be open to the formation.

FOR TEAM ORIO 3D TOE SLEEVES – follow step 9

9. Pressure test 5-1/2" 20#/ft P110RY casing to 4,500 psi by walking up pressure in 1,500psi increments. Test for 15 mins at 4,500 psi. Ensure no surface leaks or pressure fall off, bleed off pressure and burp surface lines of air in needed. Walk the pressure up to 6,000 psi and quickly increase to 8,500 psi and hold for 30 minute charted test. This sleeve is programmed to open after 38 minutes of pressure over 6,500 psi after that time we should be open to the formation. Do not exceed 8,500 psi.
10. Establish injection, do not exceed 8,500 psi, when steady rate and pressure are achieved pump 15 bbls of acid. Max rate of acid while it's in the lateral is 5 bpm (used to dissolve any potential cement stringers). Once acid is on formation increase rate to simulate pump down. If injection cannot be established or insufficient rate (less than 14 bpm), call Dan McCarty @ (405)446-9366 for path forward. Over displace acid by a minimum of 50 bbls.
 - A. See Well schematic for specific PBTD and Toe sleeve locations
11. RDMO pump trucks and associated equipment, shut in well by closing both lower master valves.
12. Secure wellhead. Will perforate the 1st stage the day of the frac job.

Dan McCarty, Completions Engineer
405-228-3095 [office]
405-446-9366 [cell]
Dan.McCarty@dvn.com