

HOBBS OCD

FIELD LAND APPROVED 10/25/2016

District I

1625 N. French Dr., Hobbs, NM 88240
Phone: (575) 393-6161 Fax: (575) 393-0720

District II

811 S. First St., Artesia, NM 88210
Phone: (575) 748-1281 Fax: (575) 748-9720

District III

1000 Rio Brazos Road, Aztec, NM 87410
Phone: (505) 334-6178 Fax: (505) 334-6170

District IV

1220 S. St. Francis Dr., Santa Fe, NM 87505
Phone: (505) 476-3460 Fax: (505) 476-3462

State of New Mexico

MAR 20 2018

RECEIVED

Energy, Minerals & Natural Resources Department

CONSERVATION DIVISION

1220 South St. Francis Dr.

Santa Fe, NM 87505

Form C-102

Revised August 1, 2011

Submit one copy to appropriate

District Office

☐ AMENDED REPORT

WELL LOCATION AND ACREAGE DEDICATION PLAT

¹ API Number 30-025-43475	² Pool Code 98210	³ Pool Name Stratigraphic
⁴ Property Code 30884	⁵ Property Name BIG CAT 16 STATE VDW	⁶ Well Number 1
⁷ OGRID No. 6137	⁸ Operator Name DEVON ENERGY PRODUCTION COMPANY, L.P.	⁹ Elevation 3683.9

¹⁰ Surface Location

UL or lot no.	Section	Township	Range	Lot Idn	Feet from the	North/South line	Feet from the	East/West line	County
L	16	23 S	32 E		2110	SOUTH	200	WEST	LEA

¹¹ Bottom Hole Location If Different From Surface

UL or lot no.	Section	Township	Range	Lot Idn	Feet from the	North/South line	Feet from the	East/West line	County

¹² Dedicated Acres 40	¹³ Joint or Infill	¹⁴ Consolidation Code	¹⁵ Order No.
--	-------------------------------	----------------------------------	-------------------------

No allowable will be assigned to this completion until all interests have been consolidated or a non-standard unit has been approved by the division.

N89°25'27"E 2643.69 FT		N89°25'35"E 2640.19 FT	
NW CORNER SEC. 16 LAT. = 32.3118416°N LONG. = 103.6881673°W NMSP EAST (FT) N = 477780.18 E = 740653.25	N/4 CORNER SEC. 16 LAT. = 32.3118706°N LONG. = 103.6796121°W NMSP EAST (FT) N = 477806.75 E = 743296.24	NE CORNER SEC. 16 LAT. = 32.3118987°N LONG. = 103.6710683°W NMSP EAST (FT) N = 477833.18 E = 745935.72	
<p>NOTE: LATITUDE AND LONGITUDE COORDINATES ARE SHOWN USING THE NORTH AMERICAN DATUM OF 1983 (NAD83). LISTED NEW MEXICO STATE PLANE EAST COORDINATES ARE GRID (NAD83). BASIS OF BEARING AND DISTANCES USED ARE NEW MEXICO STATE PLANE EAST COORDINATES MODIFIED TO THE SURFACE. ELEVATION VALUES ARE NAVD88.</p>			
W/4 CORNER SEC. 16 LAT. = 32.3045785°N LONG. = 103.6881632°W NMSP EAST (FT) N = 475137.91 E = 740670.42	<p>BIG CAT 16 STATE VDW 1 ELEV. = 3683.9' LAT. = 32.3031229°N (NAD83) LONG. = 103.6875158°W NMSP EAST (FT) N = 474609.56 E = 740873.61</p>		E/4 CORNER SEC. 16 LAT. = 32.3046362°N LONG. = 103.6710674°W NMSP EAST (FT) N = 475191.10 E = 745952.33
<p>200' SURFACE LOCATION</p>			
SW CORNER SEC. 16 LAT. = 32.2973218°N LONG. = 103.6881624°W NMSP EAST (FT) N = 472497.97 E = 740686.53	S/4 CORNER SEC. 16 LAT. = 32.2973519°N LONG. = 103.6796130°W NMSP EAST (FT) N = 472524.83 E = 743328.17	SE CORNER SEC. 16 LAT. = 32.2973762°N LONG. = 103.6710684°W NMSP EAST (FT) N = 472549.96 E = 745968.95	
S89°24'55"W 2642.35 FT		S89°27'25"W 2641.47 FT	

¹⁷ OPERATOR CERTIFICATION

I hereby certify that the information contained herein is true and complete to the best of my knowledge and belief, and that this organization either owns a working interest or unleased mineral interest in the land including the proposed bottom hole location or has a right to drill this well at this location pursuant to a contract with an owner of such a mineral or working interest, or to a voluntary pooling agreement or a compulsory pooling order heretofore entered by the division.

Signature: Chance Bland Date: 11/07/2016

Printed Name: Chance Bland

E-mail Address: chance.bland@dvn.com

¹⁸ SURVEYOR CERTIFICATION

I hereby certify that the well location shown on this plat was plotted from field notes of actual surveys made by me or under my supervision, and that the same is true and correct to the best of my belief.

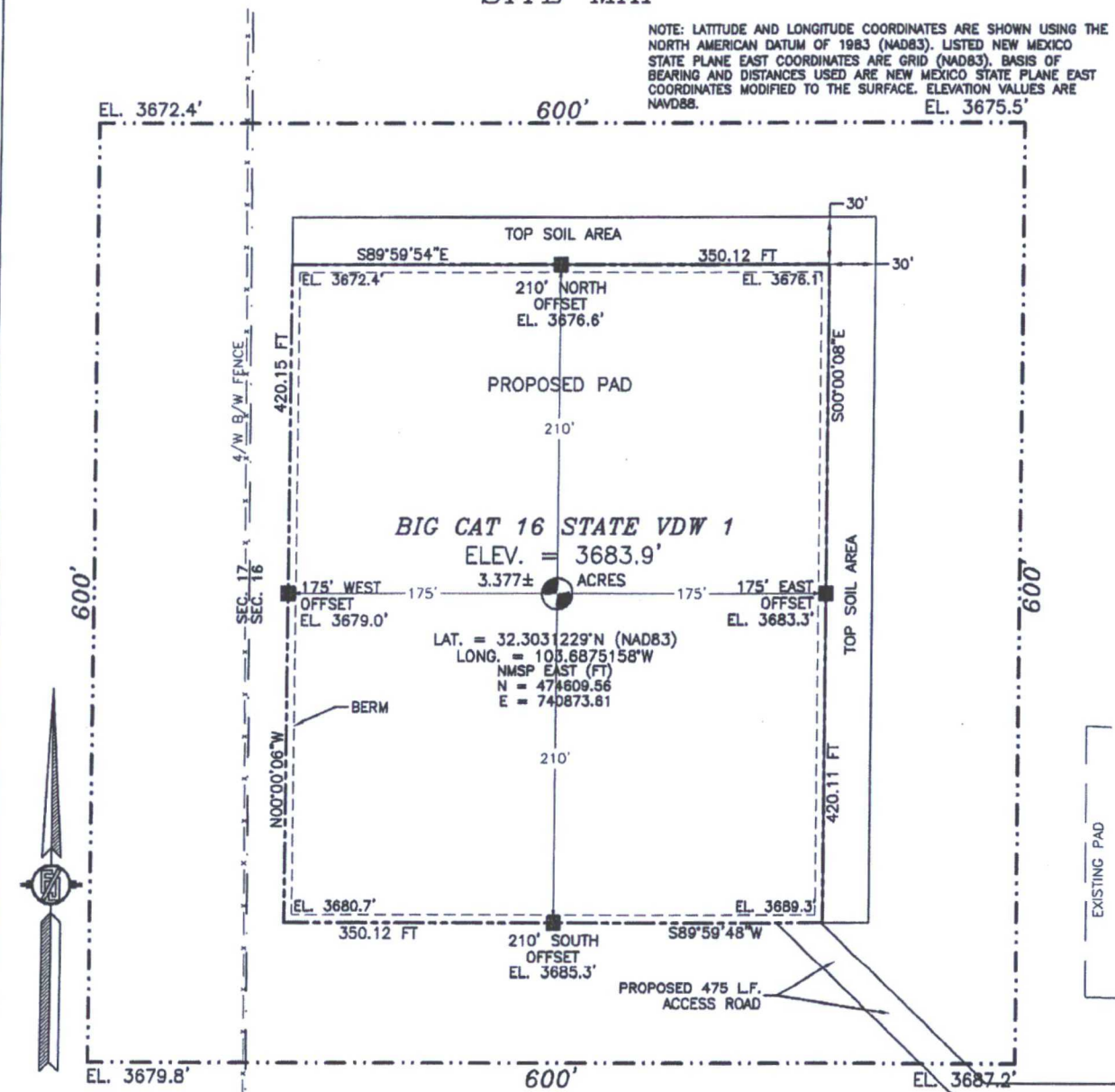
OCTOBER 13, 2016
Date of Survey

Signature and Seal of Professional Surveyor: FILMON F. JARAMILLO
Certificate Number: 12797

SURVEY NO. 4963

SECTION 16, TOWNSHIP 23 SOUTH, RANGE 32 EAST, N.M.P.M.
LEA COUNTY, STATE OF NEW MEXICO
SITE MAP

NOTE: LATITUDE AND LONGITUDE COORDINATES ARE SHOWN USING THE NORTH AMERICAN DATUM OF 1983 (NAD83). LISTED NEW MEXICO STATE PLANE EAST COORDINATES ARE GRID (NAD83). BASIS OF BEARING AND DISTANCES USED ARE NEW MEXICO STATE PLANE EAST COORDINATES MODIFIED TO THE SURFACE. ELEVATION VALUES ARE NAVD88.



010 50 100 200

SCALE 1" = 100'

DIRECTIONS TO LOCATION

FROM THE INTERSECTION OF STATE HWY 128 AND RED ROAD (CO. RD. 798) GO NORTH ON RED ROAD APPROX. 3.5 MILES TO A LEASE ROAD ON RIGHT (EAST), TURN EAST GO APPROX. 2.1 MILES, ROAD TURNS RIGHT (SOUTH) GO SOUTH APPROX. 0.5 MILE, ROAD TURNS LEFT (EAST) GO EAST APPROX. 1.1 MILES TO A LEASE ROAD ON LEFT (NORTH), TURN NORTH GO APPROX. 0.25 MILE TO A PROPOSED ROAD ABOUT 60' SOUTH OF EXISTING PAD, FOLLOW STAKES WEST ABOUT 475' TO THE SOUTHEAST CORNER OF PROPOSED PAD.

DEVON ENERGY PRODUCTION COMPANY, L.P.
BIG CAT 16 STATE VDW 1

LOCATED 2110 FT. FROM THE SOUTH LINE
AND 200 FT. FROM THE WEST LINE OF
SECTION 16, TOWNSHIP 23 SOUTH,
RANGE 32 EAST, N.M.P.M.
LEA COUNTY, STATE OF NEW MEXICO

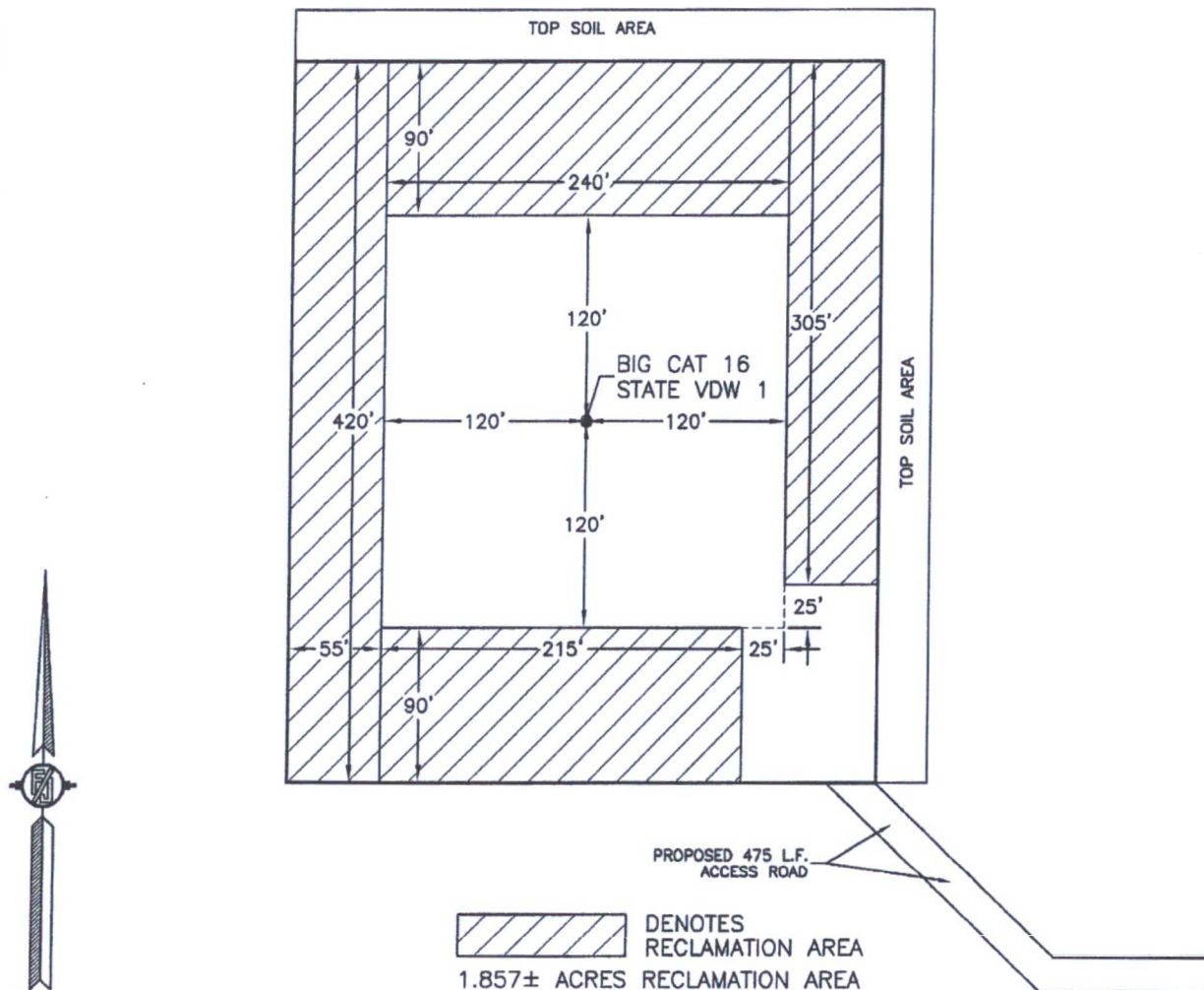
OCTOBER 13, 2016

SURVEY NO. 4963

MADRON SURVEYING, INC. 301 SOUTH CANAL (575) 234-3341

CARLSBAD, NEW MEXICO

SECTION 16, TOWNSHIP 23 SOUTH, RANGE 32 EAST, N.M.P.M.
LEA COUNTY, STATE OF NEW MEXICO
INTERIM SITE RECLAMATION



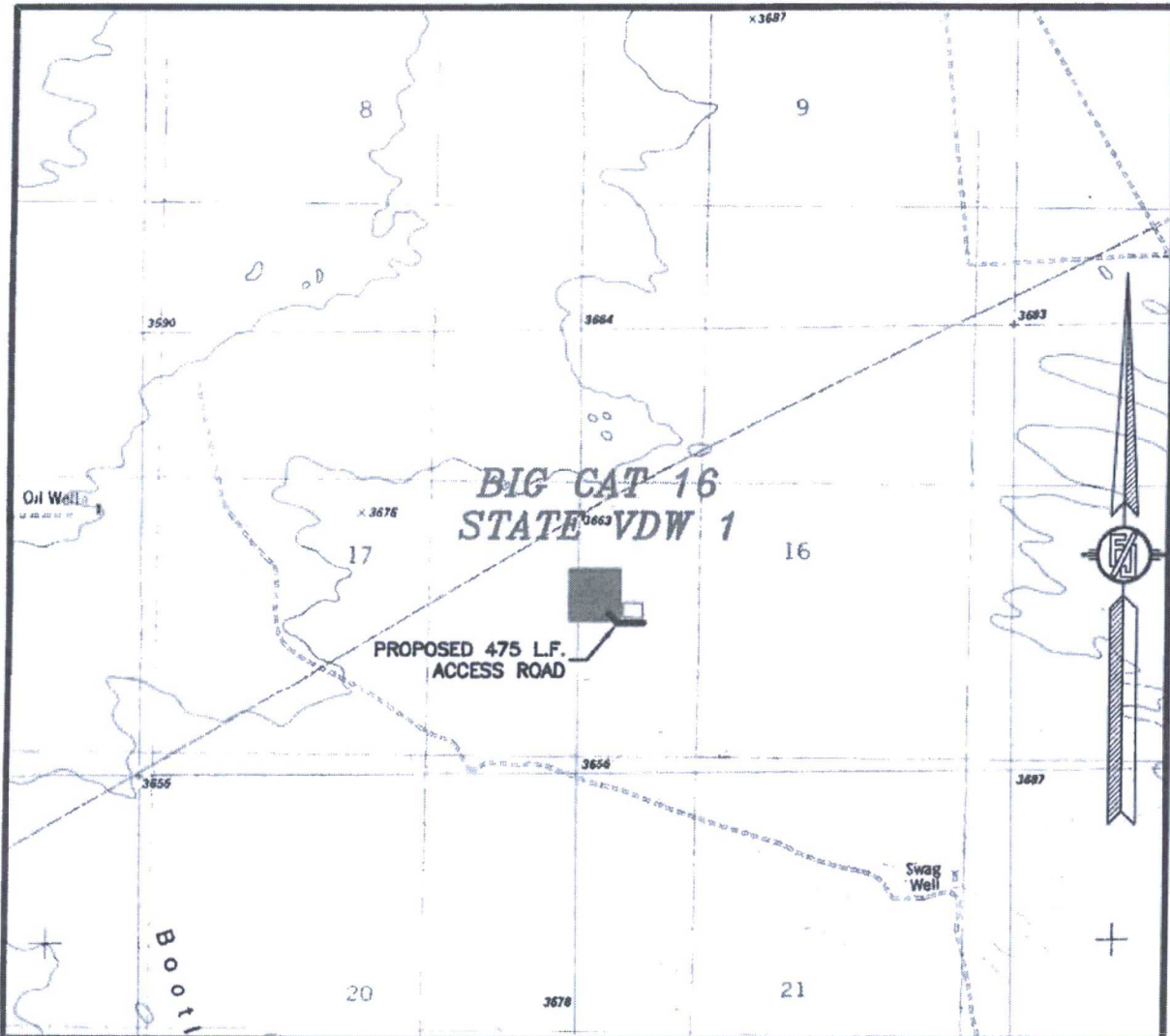
DEVON ENERGY PRODUCTION COMPANY, L.P.
BIG CAT 16 STATE VDW 1
LOCATED 2110 FT. FROM THE SOUTH LINE
AND 200 FT. FROM THE WEST LINE OF
SECTION 16, TOWNSHIP 23 SOUTH,
RANGE 32 EAST, N.M.P.M.
LEA COUNTY, STATE OF NEW MEXICO

OCTOBER 13, 2016

SURVEY NO. 4963

MADRON SURVEYING, INC. 301 SOUTH CANAL (575) 234-3341 CARLSBAD, NEW MEXICO

SECTION 16, TOWNSHIP 23 SOUTH, RANGE 32 EAST, N.M.P.M.
LEA COUNTY, STATE OF NEW MEXICO
LOCATION VERIFICATION MAP



USGS QUAD MAP:
BOOTLEG RIDGE

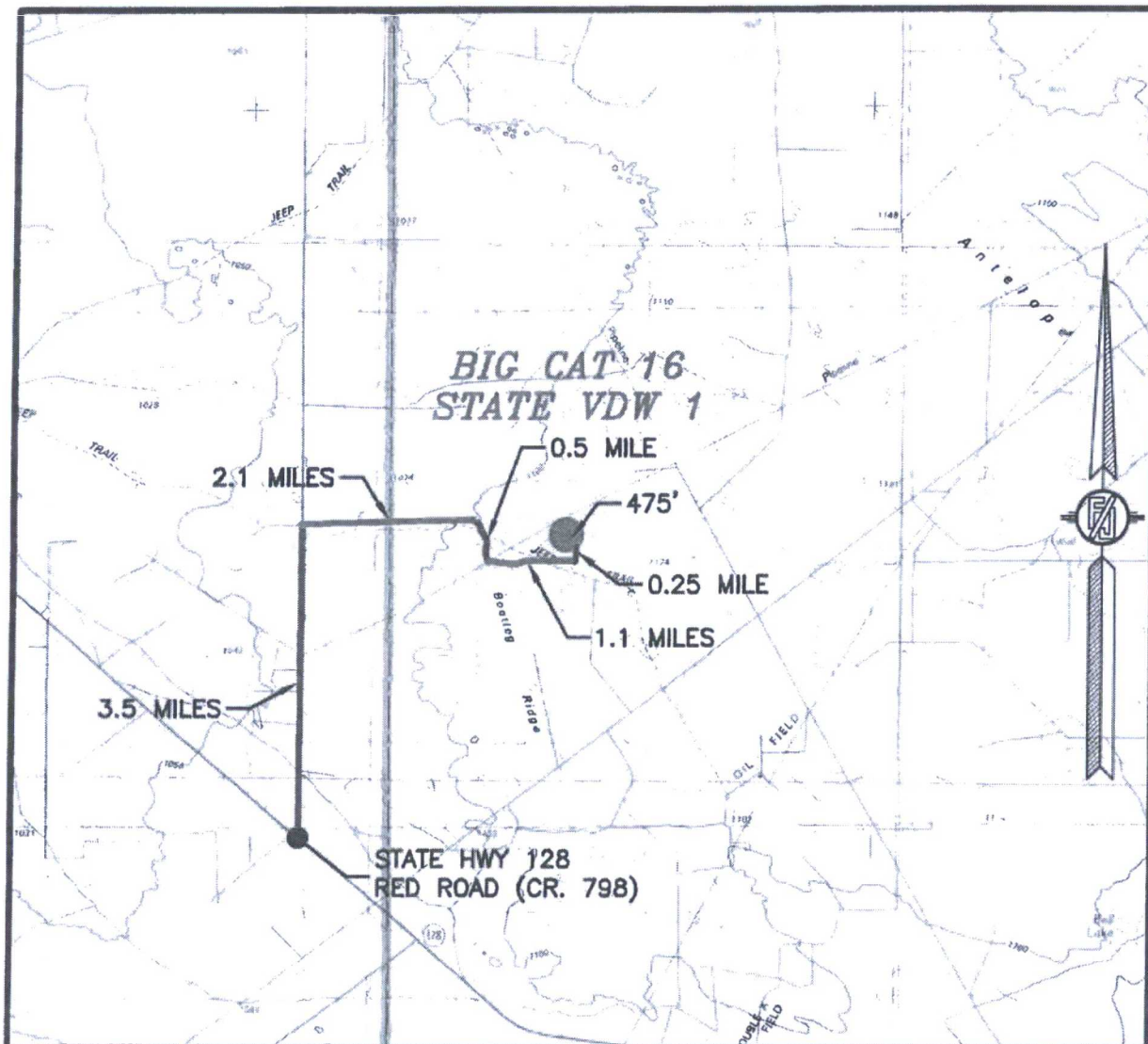
NOT TO SCALE

DEVON ENERGY PRODUCTION COMPANY, L.P.
BIG CAT 16 STATE VDW 1
LOCATED 2110 FT. FROM THE SOUTH LINE
AND 200 FT. FROM THE WEST LINE OF
SECTION 16, TOWNSHIP 23 SOUTH,
RANGE 32 EAST, N.M.P.M.
LEA COUNTY, STATE OF NEW MEXICO

OCTOBER 13, 2016

MADRON SURVEYING, INC. 301 SOUTH CANAL (575) 234-3341 CARLSBAD, NEW MEXICO SURVEY NO. 4963

SECTION 16, TOWNSHIP 23 SOUTH, RANGE 32 EAST, N.M.P.M.
LEA COUNTY, STATE OF NEW MEXICO
VICINITY MAP



DISTANCES IN MILES

NOT TO SCALE

DIRECTIONS TO LOCATION

FROM THE INTERSECTION OF STATE HWY 128 AND RED ROAD (CO. RD. 798) GO NORTH ON RED ROAD APPROX. 3.5 MILES TO A LEASE ROAD ON RIGHT (EAST), TURN EAST GO APPROX. 2.1 MILES, ROAD TURNS RIGHT (SOUTH) GO SOUTH APPROX. 0.5 MILE, ROAD TURNS LEFT (EAST) GO EAST APPROX. 1.1 MILES TO A LEASE ROAD ON LEFT (NORTH), TURN NORTH GO APPROX. 0.25 MILE TO A PROPOSED ROAD ABOUT 60' SOUTH OF EXISTING PAD, FOLLOW STAKES WEST ABOUT 475' TO THE SOUTHEAST CORNER OF PROPOSED PAD.

DEVON ENERGY PRODUCTION COMPANY, L.P.
BIG CAT 16 STATE VDW 1

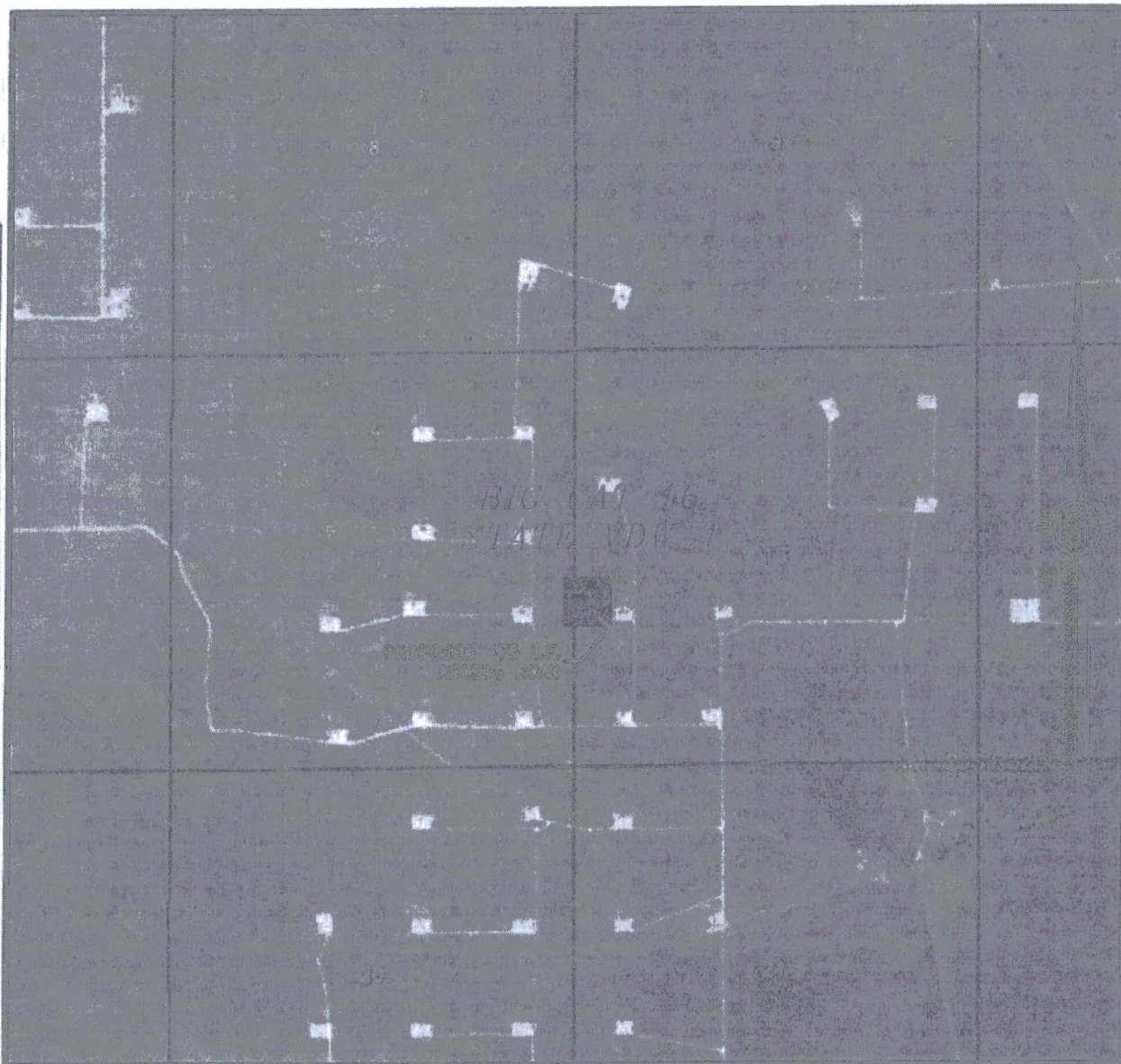
LOCATED 2110 FT. FROM THE SOUTH LINE
AND 200 FT. FROM THE WEST LINE OF
SECTION 16, TOWNSHIP 23 SOUTH,
RANGE 32 EAST, N.M.P.M.
LEA COUNTY, STATE OF NEW MEXICO

OCTOBER 13, 2016

SURVEY NO. 4963

MADRON SURVEYING, INC. 301 SOUTH CANAL CARLSBAD, NEW MEXICO
(575) 234-3341

SECTION 16, TOWNSHIP 23 SOUTH, RANGE 32 EAST, N.M.P.M.
LEA COUNTY, STATE OF NEW MEXICO
AERIAL PHOTO



NOT TO SCALE
AERIAL PHOTO:
GOOGLE EARTH
FEB. 2014

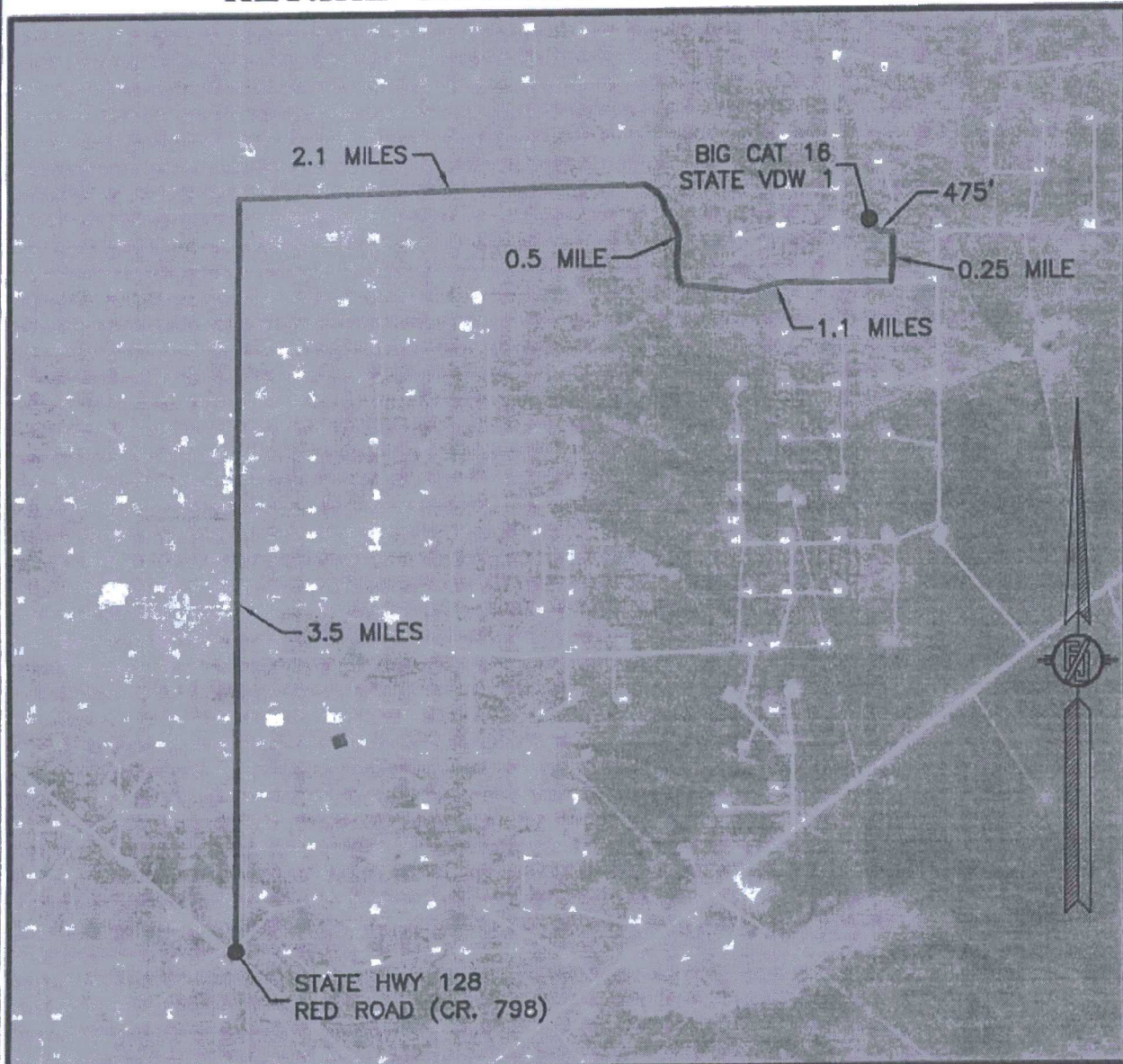
DEVON ENERGY PRODUCTION COMPANY, L.P.
BIG CAT 16 STATE VDW 1
LOCATED 2110 FT. FROM THE SOUTH LINE
AND 200 FT. FROM THE WEST LINE OF
SECTION 16, TOWNSHIP 23 SOUTH,
RANGE 32 EAST, N.M.P.M.
LEA COUNTY, STATE OF NEW MEXICO

OCTOBER 13, 2016

SURVEY NO. 4963

MADRON SURVEYING, INC. 301 SOUTH CANAL (575) 234-3341 CARLSBAD, NEW MEXICO

SECTION 16, TOWNSHIP 23 SOUTH, RANGE 32 EAST, N.M.P.M.
LEA COUNTY, STATE OF NEW MEXICO
AERIAL ACCESS ROUTE MAP



NOT TO SCALE
AERIAL PHOTO:
GOOGLE EARTH
FEB. 2014

DEVON ENERGY PRODUCTION COMPANY, L.P.
BIG CAT 16 STATE VDW 1
LOCATED 2110 FT. FROM THE SOUTH LINE
AND 200 FT. FROM THE WEST LINE OF
SECTION 16, TOWNSHIP 23 SOUTH,
RANGE 32 EAST, N.M.P.M.
LEA COUNTY, STATE OF NEW MEXICO

OCTOBER 13, 2016

SURVEY NO. 4963

MADRON SURVEYING, INC. 301 SOUTH CANAL (575) 234-3341 CARLSBAD, NEW MEXICO