

District I  
1625 N. French Dr., Hobbs, NM 88240  
Phone: (575) 393-6161 Fax: (575) 393-0720  
District II  
811 S. First St., Artesia, NM 88210  
Phone: (575) 748-1283 Fax: (575) 748-9720  
District III  
1000 Rio Brazos Road, Aztec, NM 87410  
Phone: (505) 334-6178 Fax: (505) 334-6170  
District IV  
1220 S. St. Francis Dr., Santa Fe, NM 87505  
Phone: (505) 476-3460 Fax: (505) 476-3462

State of New Mexico  
Energy, Minerals & Natural Resources  
Department  
OIL CONSERVATION DIVISION  
1220 South St. Francis Dr.  
Santa Fe, NM 87505

HOBBS OCU

MAR 21 2018

RECEIVED

FORM C-102

Revised August 1, 2011

Submit one copy to appropriate

District Office

☐ AMENDED REPORT

WELL LOCATION AND ACREAGE DEDICATION PLAT

<sup>1</sup> API Number 30-025- <b>43808</b>	<sup>2</sup> Pool Code 98135	<sup>3</sup> Pool Name WC-025 G-09 S243310P; Upper Wolfcamp
<sup>4</sup> Property Code 313956	<sup>5</sup> Property Name NEPTUNE 10 STATE COM	<sup>6</sup> Well Number #705H
<sup>7</sup> OGRID No. 7377	<sup>8</sup> Operator Name EOG RESOURCES, INC.	<sup>9</sup> Elevation 3607'

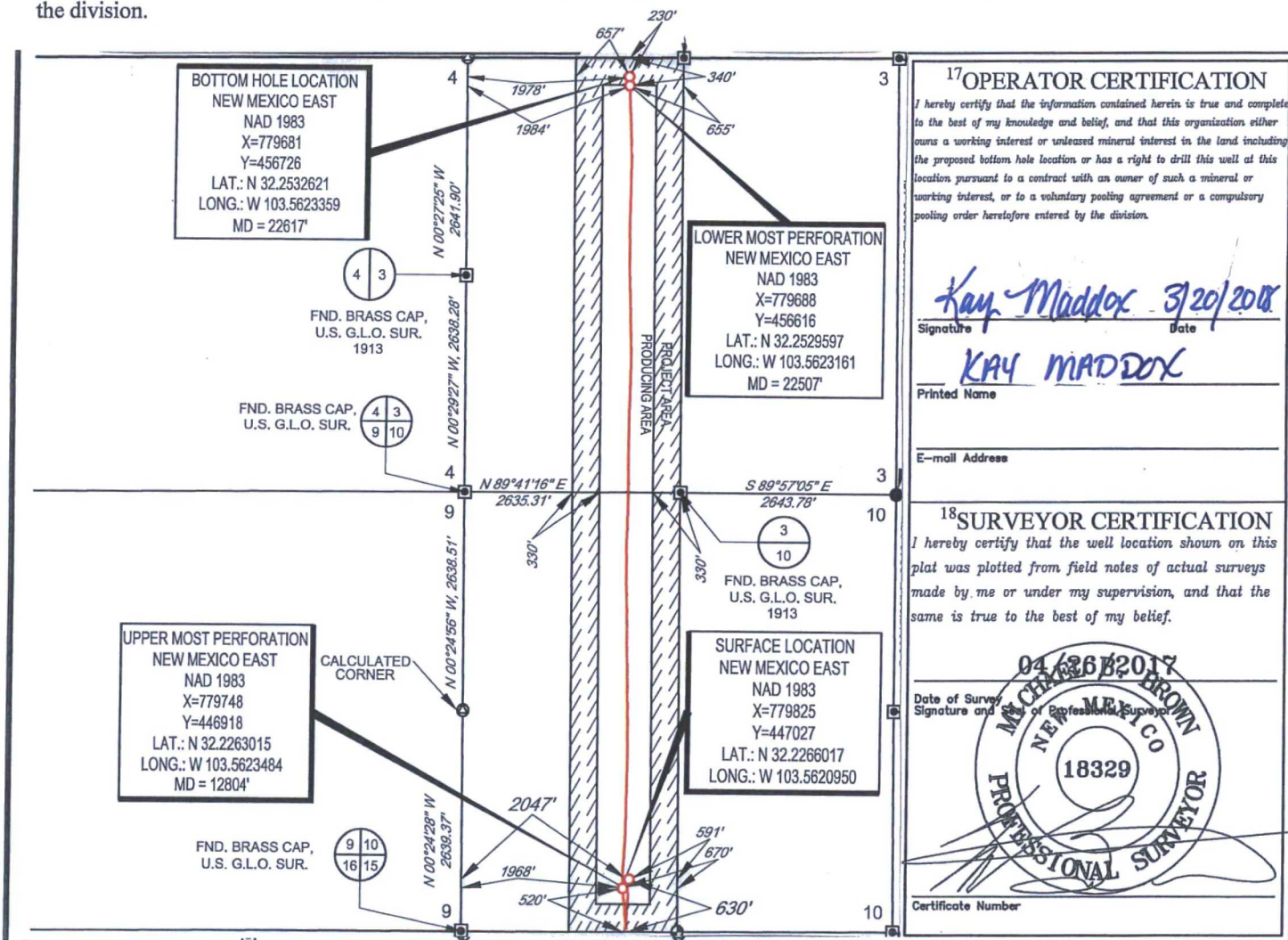
<sup>10</sup>Surface Location

UL or lot no.	Section	Township	Range	Lot Idn	Feet from the	North/South line	Feet from the	East/West line	County
N	10	24-S	33-E	-	630'	SOUTH	2047'	WEST	LEA

UL or lot no.	Section	Township	Range	Lot Idn	Feet from the	North/South line	Feet from the	East/West line	County
C	3	24-S	33-E	-	230'	NORTH	1978'	WEST	LEA

<sup>12</sup> Dedicated Acres 320.10	<sup>13</sup> Joint or Infill	<sup>14</sup> Consolidation Code	<sup>15</sup> Order No.
---	-------------------------------	----------------------------------	-------------------------

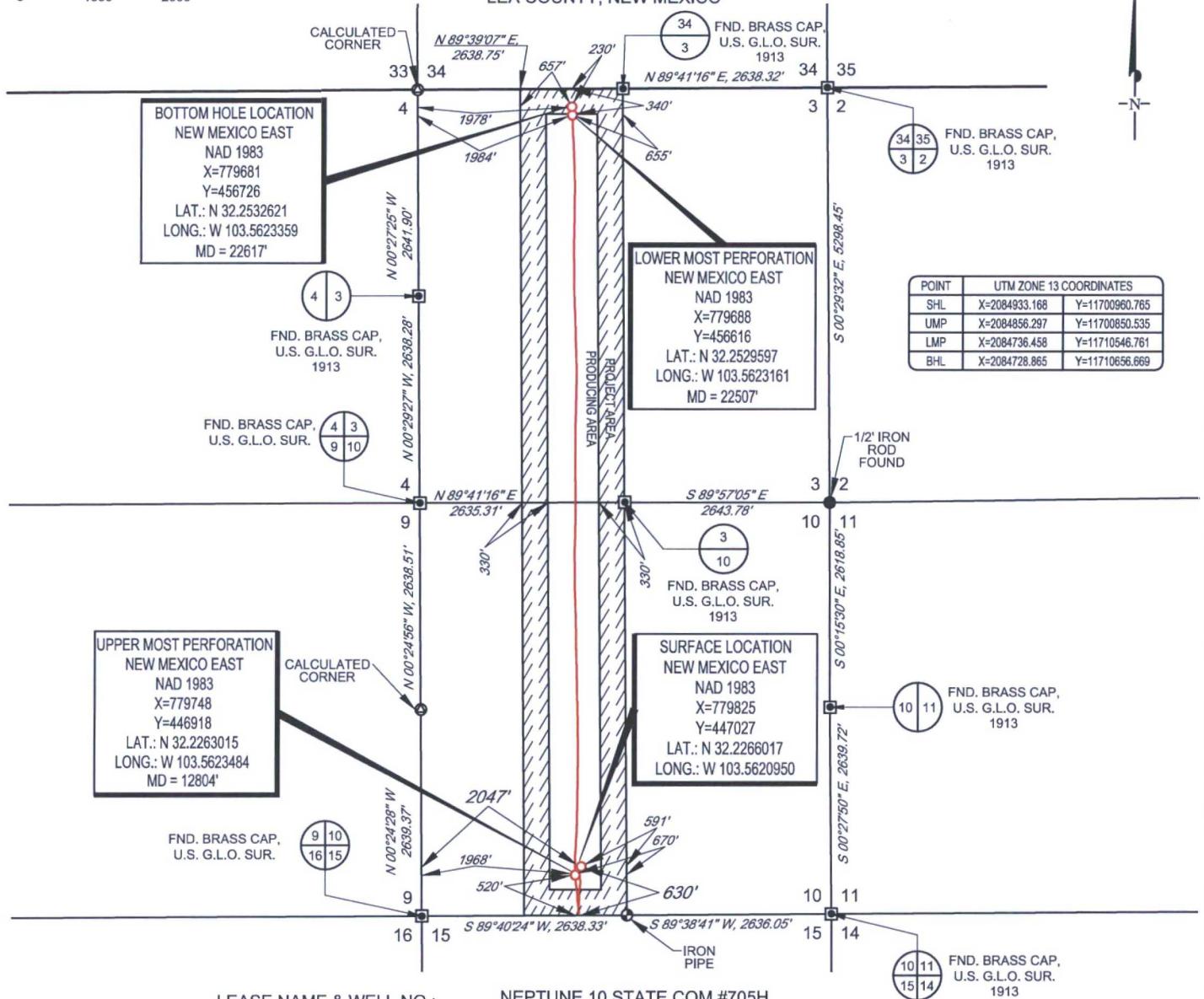
No allowable will be assigned to this completion until all interests have been consolidated or a non-standard unit has been approved by the division.



SCALE: 1" = 2000'

0' 1000' 2000'

SECTION 10 TOWNSHIP 24-S, RANGE 33-E, N.M.P.M.  
LEA COUNTY, NEW MEXICO



BOTTOM HOLE LOCATION  
NEW MEXICO EAST  
NAD 1983  
X=779681  
Y=456726  
LAT.: N 32.2532621  
LONG.: W 103.5623359  
MD = 22617'

LOWER MOST PERFORATION  
NEW MEXICO EAST  
NAD 1983  
X=779688  
Y=456616  
LAT.: N 32.2529597  
LONG.: W 103.5623161  
MD = 22507'

UPPER MOST PERFORATION  
NEW MEXICO EAST  
NAD 1983  
X=779748  
Y=446918  
LAT.: N 32.2263015  
LONG.: W 103.5623484  
MD = 12804'

SURFACE LOCATION  
NEW MEXICO EAST  
NAD 1983  
X=779825  
Y=447027  
LAT.: N 32.2266017  
LONG.: W 103.5620950

POINT	UTM ZONE 13 COORDINATES
SHL	X=2084933.168 Y=11700960.765
UMP	X=2084856.297 Y=11700850.535
LMP	X=2084736.458 Y=11710546.761
BHL	X=2084728.865 Y=11710656.669

LEASE NAME & WELL NO.: NEPTUNE 10 STATE COM #705H  
SECTION 10 TWP 24-S RGE 33-E SURVEY N.M.P.M.  
COUNTY LEA STATE NM ELEVATION 3607'  
DESCRIPTION 630' FSL & 2047' FWL



**TOPOGRAPHIC**  
LOYALTY INNOVATION LEGACY

1400 EVERMAN PARKWAY, Ste. 148 • FT. WORTH, TEXAS 76140  
TELEPHONE: (817) 744-7512 • FAX (817) 744-7548  
2903 NORTH BIG SPRING • MIDLAND, TEXAS 79705  
TELEPHONE: (432) 682-1653 OR (800) 767-1653 • FAX (432) 682-1743  
WWW.TOPOGRAPHIC.COM



Michael Blake Brown, P.S. No. 18329  
MARCH 2, 2018



NEPTUNE 10 STATE COM #705H AS-COMPLETED	REVISION:		NOTES:
	INT	DATE	
DATE: 03/02/2018			<p>1. ORIGINAL DOCUMENT SIZE: 8.5" X 11"</p> <p>2. ALL BEARINGS, DISTANCES, AND COORDINATE VALUES CONTAINED HEREIN ARE GRID BASED UPON THE NEW MEXICO COORDINATE SYSTEM OF 1983, EAST ZONE, U.S. SURVEY FEET.</p> <p>3. THIS WELL LOCATION SHOWN HEREON HAS BEEN SURVEYED ON THE GROUND UNDER MY SUPERVISION AND PREPARED ACCORDING TO THE EVIDENCE FOUND AT THE TIME OF SURVEY, AND DATA PROVIDED BY EOG RESOURCES, INC. THIS CERTIFICATION IS MADE AND LIMITED TO THOSE PERSONS OR ENTITIES SHOWN ON THE FACE OF THIS PLAT AND IS NON-TRANSFERABLE. THIS SURVEY IS CERTIFIED FOR THIS TRANSACTION ONLY.</p>
FILE: AD_NEPTUNE10STATECOM_705H			
DRAWN BY: IMU			
SHEET: 1 OF 1			