

District I
1625 N. French Dr., Hobbs, NM 88240
Phone: (575) 393-6161 Fax: (575) 393-0720
District II
811 S. First St., Artesia, NM 88210
Phone: (575) 748-1283 Fax: (575) 748-9720
District III
1000 Rio Brazos Road, Aztec, NM 87410
Phone: (505) 334-6178 Fax: (505) 334-6170
District IV
1220 S. St. Francis Dr., Santa Fe, NM 87505
Phone: (505) 476-3460 Fax: (505) 476-3462

State of New Mexico
Energy, Minerals & Natural Resources
Department
OIL CONSERVATION DIVISION
1220 South St. Francis Dr.
Santa Fe, NM 87505

HOBBS OGD
RECEIVED
MAR 21 2018

FORM C-102
Revised August 1, 2011
Submit one copy to appropriate
District Office
☐ AMENDED REPORT

WELL LOCATION AND ACREAGE DEDICATION PLAT

¹ API Number 30-025- 43806	² Pool Code 98135	³ Pool Name WC-025 G-09 S243310P; Upper Wolfcamp
⁴ Property Code 313956	⁵ Property Name NEPTUNE 10 STATE COM	
⁷ GRID No. 7377	⁸ Operator Name EOG RESOURCES, INC.	⁶ Well Number #703H
		⁹ Elevation 3613'

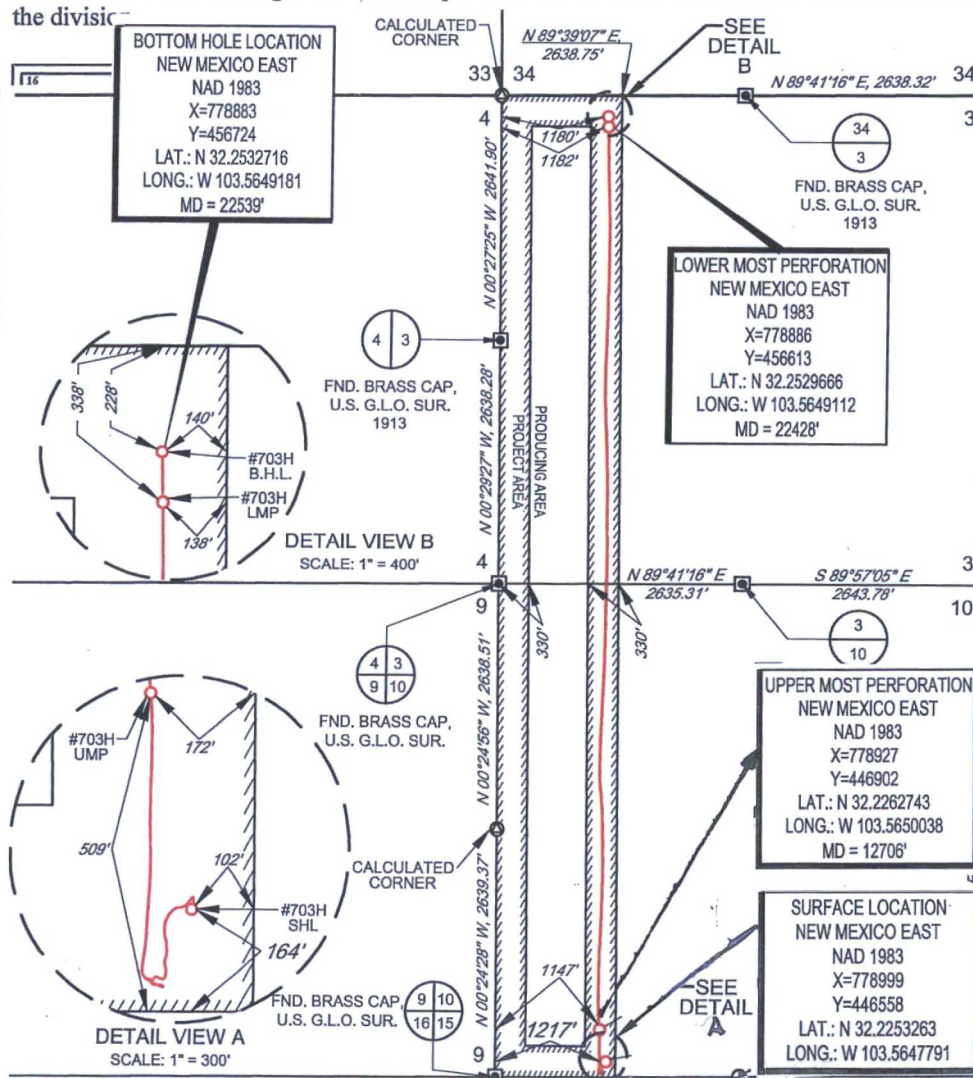
¹⁰Surface Location

UL or lot no.	Section	Township	Range	Lot Idn	Feet from the	North/South line	Feet from the	East/West line	County
M	10	24-S	33-E	-	164'	SOUTH	1217'	WEST	LEA

UL or lot no.	Section	Township	Range	Lot Idn	Feet from the	North/South line	Feet from the	East/West line	County
D	3	24-S	33-E	-	228'	NORTH	1180'	WEST	LEA

¹² Dedicated Acres 320.13	¹³ Joint or Infill	¹⁴ Consolidation Code	¹⁵ Order No.
---	-------------------------------	----------------------------------	-------------------------

No allowable will be assigned to this completion until all interests have been consolidated or a non-standard unit has been approved by the division.



17 OPERATOR CERTIFICATION	
I hereby certify that the information contained herein is true and complete to the best of my knowledge and belief, and that this organization either owns a working interest or unleased mineral interest in the land including the proposed bottom hole location or has a right to drill this well at this location pursuant to a contract with an owner of such a mineral or working interest, or to a voluntary pooling agreement or a compulsory pooling order heretofore entered by the division.	
Signature <i>Kay Maddox</i>	Date 3/19/2018
Printed Name KAY MADDUX	
E-mail Address	
18 SURVEYOR CERTIFICATION	
I hereby certify that the well location shown on this plat was plotted from field notes of actual surveys made by me or under my supervision, and that the same is true to the best of my belief.	
Date of Survey 04/26/2017	
Signature and Seal of Professional Surveyor <i>[Signature]</i>	
Certificate Number 18329	

SCALE: 1" = 2000'

SECTION 10 TOWNSHIP 24-S, RANGE 33-E, N.M.P.M.
LEA COUNTY, NEW MEXICO

BOTTOM HOLE LOCATION
NEW MEXICO EAST
NAD 1983
X=778883
Y=456724
LAT.: N 32.2532716
LONG.: W 103.5649181
MD = 22539'

CALCULATED
CORNER

SEE
DETAIL
B

FND. BRASS CAP,
U.S. G.L.O. SUR.
1913

FND. BRASS CAP,
U.S. G.L.O. SUR.
1913

LOWER MOST PERFORATION
NEW MEXICO EAST
NAD 1983
X=778886
Y=456613
LAT.: N 32.2529666
LONG.: W 103.5649112
MD = 22428'

POINT	UTM ZONE 13 COORDINATES
SHL	X=2084109.517 Y=11700485.773
UMP	X=2084035.447 Y=11700829.638
LMP	X=2083934.337 Y=11710538.544
BHL	X=2083930.718 Y=11710649.421

FND. BRASS CAP,
U.S. G.L.O. SUR.
1913

DETAIL VIEW B
SCALE: 1" = 400'

FND. BRASS CAP,
U.S. G.L.O. SUR.
1913

FND. BRASS CAP,
U.S. G.L.O. SUR.
1913

UPPER MOST PERFORATION
NEW MEXICO EAST
NAD 1983
X=778927
Y=446902
LAT.: N 32.2262743
LONG.: W 103.5650038
MD = 12706'

FND. BRASS CAP,
U.S. G.L.O. SUR.
1913

SURFACE LOCATION
NEW MEXICO EAST
NAD 1983
X=778999
Y=446558
LAT.: N 32.2253263
LONG.: W 103.5647791

FND. BRASS CAP,
U.S. G.L.O. SUR.
1913

LEASE NAME & WELL NO.: NEPTUNE 10 STATE COM #703H

SECTION 10 TWP 24-S RGE 33-E SURVEY N.M.P.M.

COUNTY LEA STATE NM ELEVATION 3613'

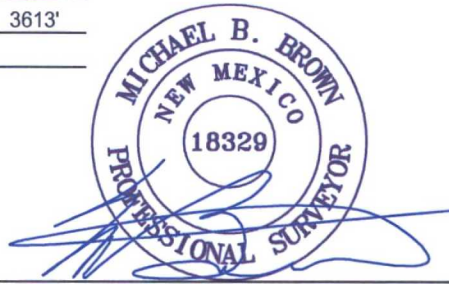
DESCRIPTION 164' FSL & 1217' FWL



TOPOGRAPHIC
LOYALTY INNOVATION LEGACY

1400 EVERMAN PARKWAY, Ste. 146 • FT. WORTH, TEXAS 76140
TELEPHONE: (817) 744-7512 • FAX (817) 744-7548
2903 n BIG SPRING • MIDLAND, TEXAS 79705
TELEPHONE: (432) 682-1653 OR (800) 767-1653 • FAX (432) 682-1743
WWW.TOPOGRAPHIC.COM

EOG resources, Inc.



Michael Blake Brown, P.S. No. 18329
FEBRUARY 7, 2018

NEPTUNE 10 STATE COM
#703H AS-COMPLETED

REVISION:

INT DATE

DATE: 02/07/2018

FILE:AD_NEPTUNE10STATECOM_703H

DRAWN BY: IMU

SHEET: 1 OF 1

NOTES:

1. ORIGINAL DOCUMENT SIZE: 8.5" X 11"
2. ALL BEARINGS, DISTANCES, AND COORDINATE VALUES CONTAINED HEREIN ARE GRID BASED UPON THE NEW MEXICO COORDINATE SYSTEM OF 1983, EAST ZONE, U.S. SURVEY FEET.
3. THIS WELL LOCATION SHOWN HEREON HAS BEEN SURVEYED ON THE GROUND UNDER MY SUPERVISION AND PREPARED ACCORDING TO THE EVIDENCE FOUND AT THE TIME OF SURVEY, AND DATA PROVIDED BY EOG RESOURCES, INC. THIS CERTIFICATION IS MADE AND LIMITED TO THOSE PERSONS OR ENTITIES SHOWN ON THE FACE OF THIS PLAT AND IS NON-TRANSFERABLE. THIS SURVEY IS CERTIFIED FOR THIS TRANSACTION ONLY.