

DISTRICT I  
1625 N French Dr., Hobbs, NM 88240  
Phone: (575) 393-6161 Fax: (575) 393-0720

DISTRICT II  
811 S First St., Artesia, NM 88210  
Phone: (575) 748-1283 Fax: (575) 748-9720

DISTRICT III  
1000 Rio Brazos Road, Aztec, NM 87410  
Phone: (505) 334-6178 Fax: (505) 334-6170

DISTRICT IV  
1220 S St. Francis Dr., Santa Fe, NM 87505  
Phone: (505) 476-3460 Fax: (505) 476-3462

State of New Mexico  
Energy, Minerals & Natural Resources Department  
**OIL CONSERVATION DIVISION**  
1220 South St. Francis Dr.  
Santa Fe, New Mexico 87505

Form C-102  
Revised August 1, 2011  
Submit one copy to appropriate  
District Office

☐ AMENDED REPORT

**WELL LOCATION AND ACREAGE DEDICATION PLAT**

API Number <b>30-025-42918</b>	Pool Code <b>97900</b>	Pool Name <b>RED HILLS; UPPER BONE SPRING SHALE</b>
Property Code <b>315615</b>	Property Name <b>ROJO D 7811 JV-P COM</b>	Well Number <b>2H</b>
OGRID No. <b>260297</b>	Operator Name <b>BTA OIL PRODUCERS</b>	Elevation <b>3349'</b>

Surface Location

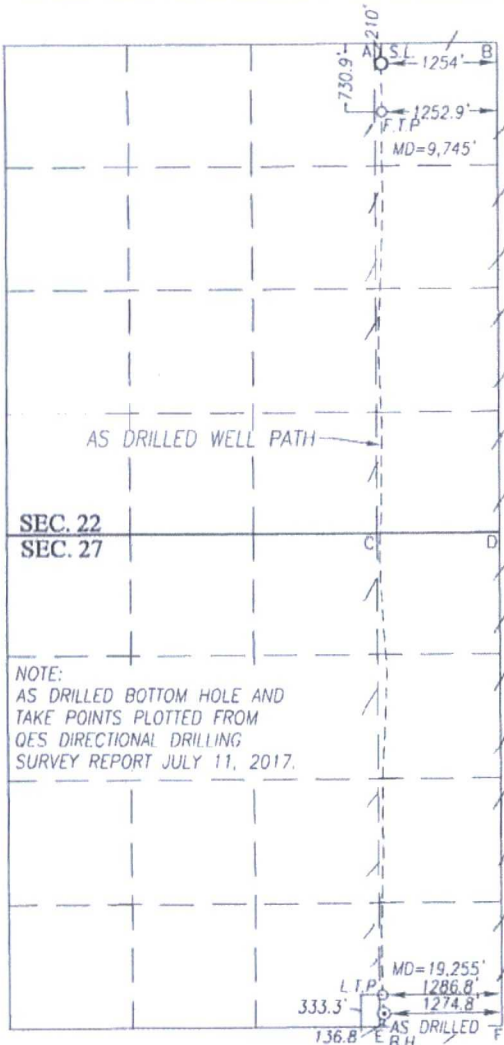
UL or lot No	Section	Township	Range	Lot Idn	Feet from the	North/South line	Feet from the	East/West line	County
<b>A</b>	<b>22</b>	<b>25-S</b>	<b>33-E</b>		<b>210</b>	<b>NORTH</b>	<b>1254</b>	<b>EAST</b>	<b>LEA</b>

As Drilled Bottom Hole Location If Different From Surface

UL or lot No	Section	Township	Range	Lot Idn	Feet from the	North/South line	Feet from the	East/West line	County
<b>P</b>	<b>27</b>	<b>25-S</b>	<b>33-E</b>		<b>136.8</b>	<b>SOUTH</b>	<b>1274.8</b>	<b>EAST</b>	<b>LEA</b>
Dedicated Acres <b>320</b>	Joint or Infill	Consolidation Code	Order No.						

NO ALLOWABLE WILL BE ASSIGNED TO THIS COMPLETION UNTIL ALL INTERESTS HAVE BEEN CONSOLIDATED OR A NON-STANDARD UNIT HAS BEEN APPROVED BY THE DIVISION

SCALE: 1"=2000'



GEODETIC COORDINATES	GEODETIC COORDINATES
NAD 83 NME	NAD 27 NME
SURFACE LOCATION	SURFACE LOCATION
Y= 409249.8 N	Y= 409191.9 N
X= 782072.1 E	X= 740886.0 E
LAT.=32.122719° N	LAT.=32.122594° N
LONG.=103.555713° W	LONG.=103.555242° W
FIRST TAKE POINT	FIRST TAKE POINT
NAD 83 NME	NAD 27 NME
Y= 408729.0 N	Y= 408671.1 N
X= 782077.2 E	X= 740891.1 E
LAT.=32.121287° N	LAT.=32.121162° N
LONG.=103.555709° W	LONG.=103.555237° W

CORNER COORDINATES TABLE

NAD 27 NME
A - Y= 409401.4 N, X= 740813.4 E
B - Y= 409410.5 N, X= 742138.1 E
C - Y= 404121.2 N, X= 740851.6 E
D - Y= 404130.0 N, X= 742177.9 E
E - Y= 398839.9 N, X= 740891.1 E
F - Y= 398848.7 N, X= 742215.8 E

CORNER COORDINATES TABLE

NAD 83 NME
A - Y= 409459.2 N, X= 781999.4 E
B - Y= 409468.3 N, X= 783324.2 E
C - Y= 404179.0 N, X= 782037.9 E
D - Y= 404187.7 N, X= 783364.2 E
E - Y= 398897.5 N, X= 782077.7 E
F - Y= 398906.3 N, X= 783402.4 E

LAST TAKE POINT	LAST TAKE POINT
NAD 83 NME	NAD 27 NME
Y= 399231.0 N	Y= 399173.4 N
X= 782113.4 E	X= 740926.9 E
LAT.=32.095179° N	LAT.=32.095054° N
LONG.=103.555813° W	LONG.=103.555343° W
AS DRILLED	AS DRILLED
BOTTOM HOLE LOCATION	BOTTOM HOLE LOCATION
NAD 83 NME	NAD 27 NME
Y= 399034.5 N	Y= 398976.9 N
X= 782126.9 E	X= 740940.3 E
LAT.=32.094639° N	LAT.=32.094514° N
LONG.=103.555774° W	LONG.=103.555304° W

**OPERATOR CERTIFICATION**

I hereby certify that the information herein is true and complete to the best of my knowledge and belief, and that this organization either owns a working interest or unleased mineral interest in the land including the proposed bottom hole location or has a right to drill this well at this location pursuant to a contract with an owner of such mineral or working interest, or to a voluntary pooling agreement or a compulsory pooling order heretofore entered by the division.

*Kayla McConnell* 4/3/18  
Signature Date  
**KAYLA MCCONNELL**  
Printed Name  
**KMCCONNELL@BTAOIL.COM**  
E-mail Address

**SURVEYOR CERTIFICATION**

I hereby certify that the well location shown on this plat was plotted from field notes of actual surveys made by me or under my supervision, and that the same is true and correct to the best of my belief.

Date of Survey **03/26/2018**  
Signature *Ronald J. Eidson*  
Seal of Professional Surveyor  
Certificate Number **3239**  
Gary G. Eidson 12641  
Ronald J. Eidson 3239  
LSL REL W O: 17130867 JWSC W O: 18 13 0342