

District I
1625 N. French Dr., Hobbs, NM 88240
Phone: (575) 393-6161 Fax: (575) 393-0720
District II
811 S. First St., Artesia, NM 88210
Phone: (575) 748-1283 Fax: (575) 748-9720
District III
1000 Rio Brazos Road, Aztec, NM 87410
Phone: (505) 334-6178 Fax: (505) 334-6170
District IV
1220 S. St. Francis Dr., Santa Fe, NM 87505
Phone: (505) 476-3460 Fax: (505) 476-3462

State of New Mexico
Energy, Minerals & Natural Resources Department
OIL CONSERVATION DIVISION
1220 South St. Francis Dr.
Santa Fe, NM 87505

Form C-102
Revised August 1, 2011
Submit one copy to appropriate
District Office
☐ AMENDED REPORT

WELL LOCATION AND ACREAGE DEDICATION PLAT

¹ API Number	² Pool Code 2220	³ Pool Name ANTELOPE RIDGE: WOLFCAMP
⁴ Property Code	⁵ Property Name KNIFE FIGHT FEE 24 34 26 WXY	⁶ Well Number 3H
⁷ OGRID No. 372098	⁸ Operator Name MARATHON OIL PERMIAN, LLC	⁹ Elevation 3447'

¹⁰ Surface Location

UL or lot no.	Section	Township	Range	Lot Idn	Feet from the	North/South line	Feet from the	East/West line	County
A	26	T24S	R34E		271	NORTH	1205	EAST	LEA

¹¹ Bottom Hole Location If Different From Surface

UL or lot no.	Section	Township	Range	Lot Idn	Feet from the	North/South line	Feet from the	East/West line	County
0	26	T24S	R34E		150	SOUTH	2301	EAST	LEA

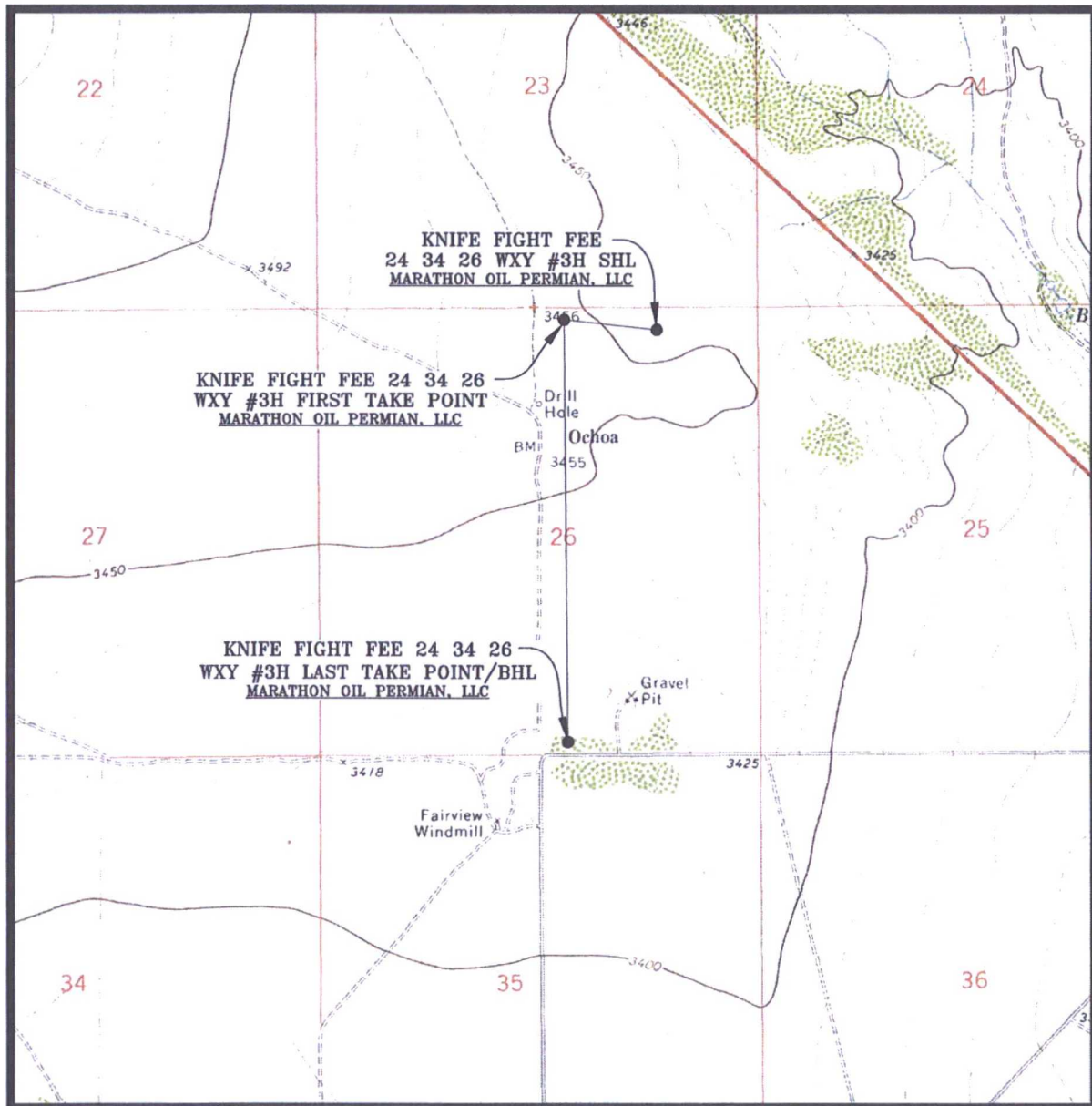
¹² Dedicated Acres 320.00	¹³ Joint or Infill	¹⁴ Consolidation Code	¹⁵ Order No.
---	-------------------------------	----------------------------------	-------------------------

No allowable will be assigned to this completion until all interests have been consolidated or a non-standard unit has been approved by the division.

<p>SECTION 22</p> <p>SECTION 27</p>		<p>SECTION 23</p> <p>SECTION 26</p> <p>SURFACE HOLE LOCATION 271' FNL 1205' FEL, SECTION 26 NAD 83, SPCS NM EAST X:818883.35' / Y:435841.15' LAT:32.19502156N / LON:103.43610129W NAD 27, SPCS NM EAST X:777698.07' / Y:435782.47' LAT:32.19489650N / LON:103.43562965W</p> <p>FIRST TAKE POINT 150' FNL 2318' FEL, SECTION 26 NAD 83, SPCS NM EAST X:817769.50' / Y:435957.11' LAT:32.19536577N / LON:103.43969859W NAD 27, SPCS NM EAST X:776586.25' / Y:435898.44' LAT:32.19524076N / LON:103.43922677W</p> <p>LAST TAKE POINT/BOTTOM HOLE LOCATION 150' FSL 2301' FEL, SECTION 26 NAD 83, SPCS NM EAST X:817821.15' / Y:430973.82' LAT:32.18166758N / LON:103.43966547W NAD 27, SPCS NM EAST X:776635.66' / Y:430915.28' LAT:32.18154249N / LON:103.43919448W</p>		<p>SECTION 24</p> <p>SECTION 25</p> <p>SECTION 36</p>		<p>17 OPERATOR CERTIFICATION I hereby certify that the information contained herein is true and complete to the best of my knowledge and belief, and that this organization either owns a working interest or unleased mineral interest in the land including the proposed bottom hole location or has a right to drill this well at this location pursuant to a contract with an owner of such a mineral or working interest, or to a voluntary pooling agreement or a compulsory pooling order heretofore entered by the division.</p> <p><i>Jennifer Van Curen</i> 2/26/2018 Signature Date</p> <p>Jennifer Van Curen Printed Name</p> <p>E-mail Address</p> <p>18 SURVEYOR CERTIFICATION I hereby certify that the well location shown on this plat was plotted from field notes of actual surveys made by me or under my supervision, and that the same is true and correct to the best of my belief.</p> <p>JANUARY 19, 2018 Date of Survey</p> <p>Signature and Seal of Professional Surveyor <i>Lloyd P. Short</i></p> <p>Certificate Number LLOYD P. SHORT 21653</p>
<p>SECTION 27</p> <p>SECTION 34</p>		<p>SECTION 26</p> <p>SECTION 35</p> <p>CORNER COORDINATES NAD 83, SPCS NM EAST A - X: 817437.94' / Y: 436105.61' B - X: 820086.51' / Y: 436117.58' C - X: 820123.29' / Y: 430839.41' D - X: 817492.71' / Y: 430821.59'</p>		<p>SECTION 25</p> <p>SECTION 36</p> <p>CORNER COORDINATES NAD 27, SPCS NM EAST A - X: 776252.70' / Y: 436046.94' B - X: 778901.21' / Y: 436058.88' C - X: 778937.75' / Y: 430780.85' D - X: 776307.22' / Y: 430763.06'</p>		<p>19</p>

3 01/19/2018 CAP
REV. DATE BY

LOCATION VERIFICATION MAP

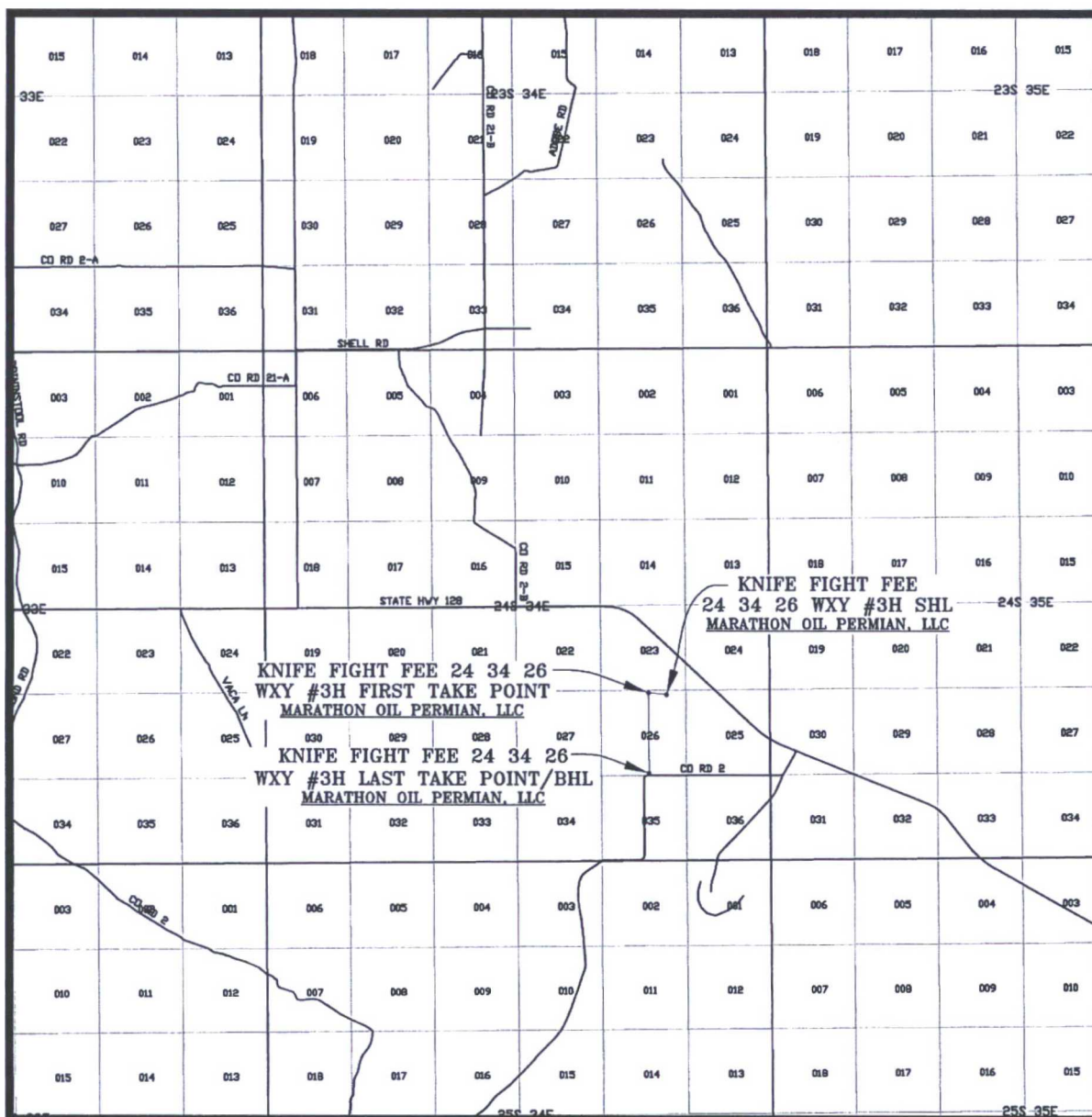


SEC. 26 TWP. 24-S RGE. 34-E
 SURVEY: N.M.P.M.
 COUNTY: LEA
 DESCRIPTION: 271' FNL & 1205' FEL
 ELEVATION: 3447'
 OPERATOR: MARATHON OIL PERMIAN, LLC
 LEASE: KNIFE FIGHT FEE 24 34 26
 U.S.G.S. TOPOGRAPHIC MAP: WOODLEY FLAT, N.M.

SCALE: 1" = 2000'
 CONTOUR INTERVAL = 20'

PREPARED BY:
 R-SQUARED GLOBAL, LLC
 1309 LOUISVILLE AVENUE, MONROE, LA 71201
 318-323-6900 OFFICE
 JOB No. R3800_004

VICINITY MAP



SEC. 26 TWP. 24-S RGE. 34-E
 SURVEY: N.M.P.M.
 COUNTY: LEA
 DESCRIPTION: 271' FNL & 1205' FEL
 ELEVATION: 3447'
 OPERATOR: MARATHON OIL PERMIAN, LLC
 LEASE: KNIFE FIGHT FEE 24 34 26
 U.S.G.S. TOPOGRAPHIC MAP: WOODLEY FLAT, N.M.

SCALE: 1" = 2 MILES

PREPARED BY:
 R-SQUARED GLOBAL, LLC
 1309 LOUISVILLE AVENUE, MONROE, LA 71201
 318-323-6900 OFFICE
 JOB No. R3800_004