

DISTRICT IV
1220 S. ST. FRANCIS DR., SANTA FE, NM 87505
Phone: (505) 476-3460 Fax: (505) 476-3482

State of New Mexico
Energy, Minerals & Natural Resources Department
OIL CONSERVATION DIVISION
1220 SOUTH ST. FRANCIS DR.
Santa Fe, New Mexico 87505

Submit one copy to appropriate
District Office

☐ AMENDED REPORT

WELL LOCATION AND ACREAGE DEDICATION PLAT

API Number 30-025- 44627	Pool Code 97964 97784	Well Name WC-025 S243225S WC-025 S243225S; Lower Bone Spring
Property Code 314193	Property Name EIDER FEDERAL	Well Number 15H
OGRID No. 217955	Operator Name COG PRODUCTION, LLC	Elevation 3521.3'

Surface Location

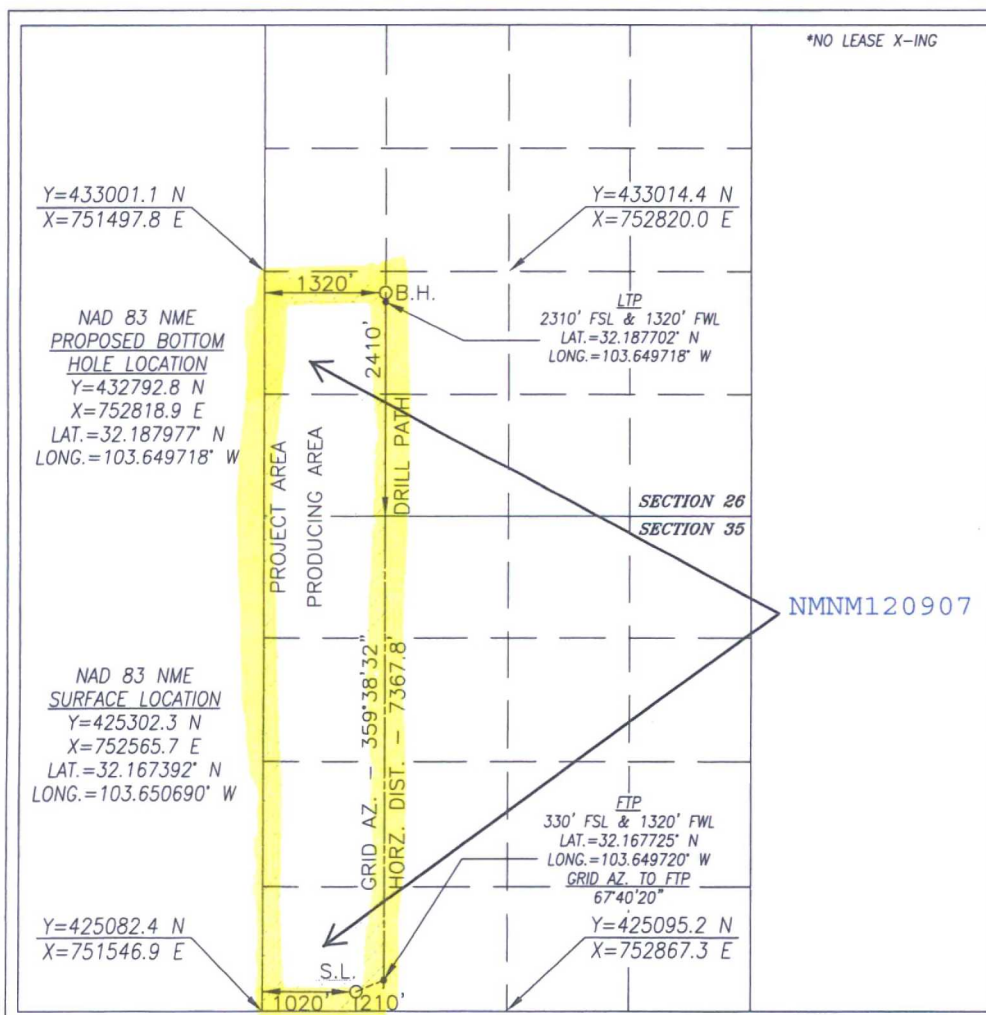
UL or lot No.	Section	Township	Range	Lot Idn	Feet from the	North/South line	Feet from the	East/West line	County
M	35	24-S	32-E		210	SOUTH	1020	WEST	LEA

Bottom Hole Location If Different From Surface

UL or lot No.	Section	Township	Range	Lot Idn	Feet from the	North/South line	Feet from the	East/West line	County
L	26	24-S	32-E		2410	SOUTH	1320	WEST	LEA

Dedicated Acres	Joint or Infill	Consolidation Code	Order No.
240			

NO ALLOWABLE WILL BE ASSIGNED TO THIS COMPLETION UNTIL ALL INTERESTS HAVE BEEN CONSOLIDATED
OR A NON-STANDARD UNIT HAS BEEN APPROVED BY THE DIVISION



OPERATOR CERTIFICATION

I hereby certify that the information herein is true and complete to the best of my knowledge and belief, and that this organisation neither owns a working interest or unleased mineral interest in the land including the proposed bottom hole location or has a right to drill this well at this location pursuant to a contract with an owner of such mineral or working interest, or to a voluntary pooling agreement or a compulsory pooling order heretofore entered by the division.

Signature Mate Roy Date 8-8-17

Mayte Reyes

Printed Name _____

mreyes1@concho.com

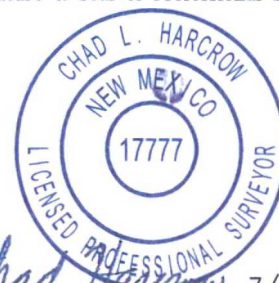
SURVEYOR CERTIFICATION

I hereby certify that the well location shown on this plat was plotted from field notes of actual surveys made by me or under my supervision, and that the same is true and correct to the best of my belief.

JUNE 22, 2017

Date of Survey _____

Signature & Seal of Professional Surveyor



Certificate No.	CHAD HARCROW	17777
W.O. #	17-695	DRAWN BY: CD