

District I  
1625 N. French Dr., Hobbs, NM 88240  
Phone: (575) 393-6161 Fax: (575) 393-0720  
District II  
811 S. First St., Artesia, NM 88210  
Phone: (575) 748-1283 Fax: (575) 748-9720  
District III  
1000 Rio Brazos Road, Aztec, NM 87410  
Phone: (505) 334-6178 Fax: (505) 334-6170  
District IV  
1220 S. St. Francis Dr., Santa Fe, NM 87505  
Phone: (505) 476-3460 Fax: (505) 476-3462

State of New Mexico  
Energy, Minerals & Natural Resources  
Department  
OIL CONSERVATION DIVISION  
1220 South St. Francis Dr.  
Santa Fe, NM 87505

**HOBBS OCD**

**APR 02 2018**

**RECEIVED**

FORM C-102

Revised August 1, 2011

Submit one copy to appropriate

District Office

☐ AMENDED REPORT

**WELL LOCATION AND ACREAGE DEDICATION PLAT**

<sup>1</sup> API Number 30-025-44149		<sup>2</sup> Pool Code 27220		<sup>3</sup> Pool Name Gem; Bone Spring	
<sup>4</sup> Property Code 314278		<sup>5</sup> Property Name FEDERAL 30			<sup>6</sup> Well Number #124H
<sup>7</sup> GRID No. 228937		<sup>8</sup> Operator Name MATADOR PRODUCTION COMPANY			<sup>9</sup> Elevation 3602'


<sup>10</sup>Surface Location

UL or lot no.	Section	Township	Range	Lot Idn	Feet from the	North/South line	Feet from the	East/West line	County
A	30	19-S	33-E	-	228'	NORTH	698'	EAST	LEA

UL or lot no.	Section	Township	Range	Lot Idn	Feet from the	North/South line	Feet from the	East/West line	County
P	30	19-S	33-E	-	202'	SOUTH	690'	EAST	LEA

<sup>12</sup> Dedicated Acres 160.19	<sup>13</sup> Joint or Infill	<sup>14</sup> Consolidation Code	<sup>15</sup> Order No.
---	-------------------------------	----------------------------------	-------------------------

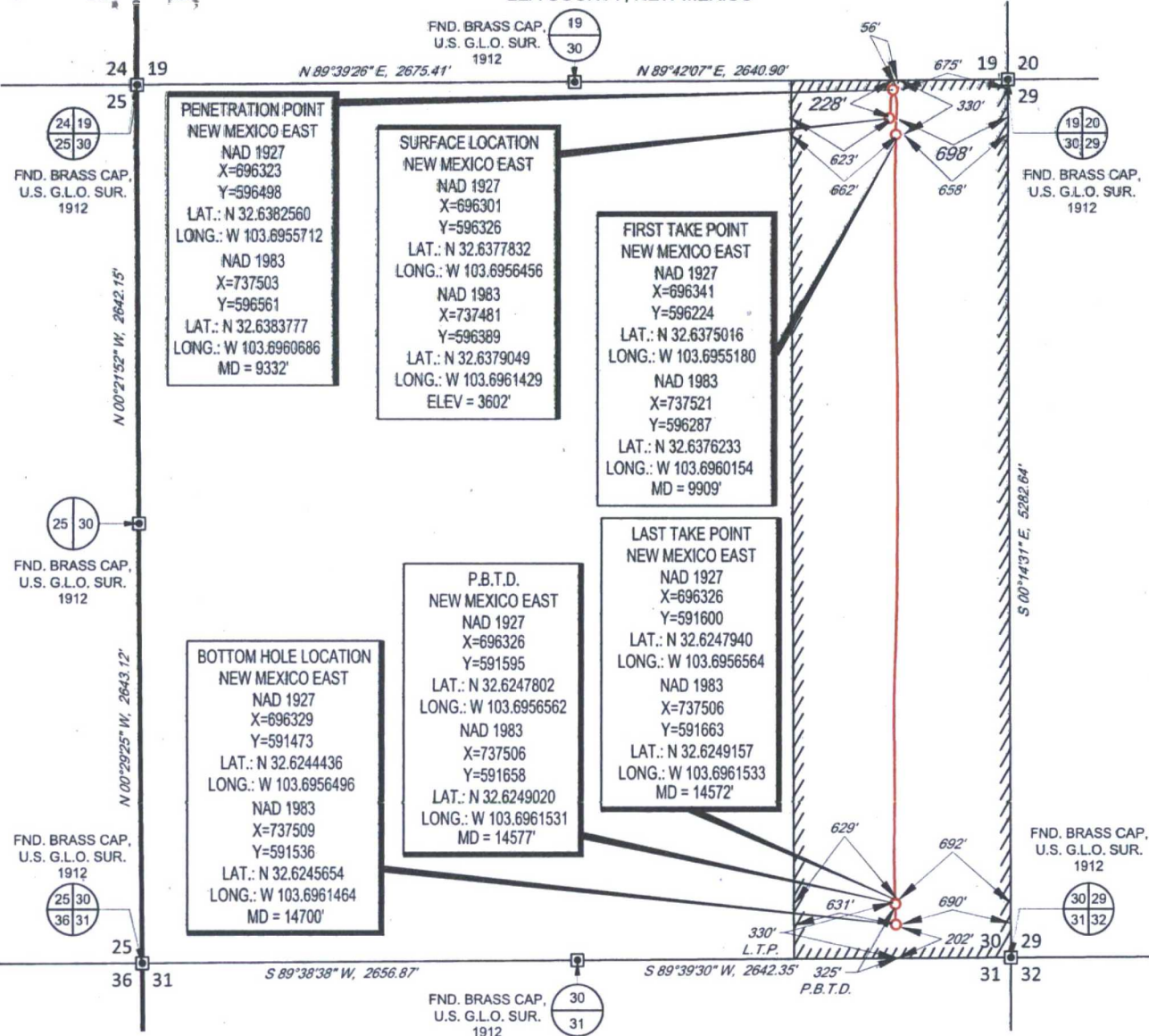
No allowable will be assigned to this completion until all interests have been consolidated or a non-standard unit has been approved by the division.

<sup>16</sup> <div> <div> <b>PENETRATION POINT</b>  NEW MEXICO EAST  NAD 1927  X=696323  Y=596498  LAT.: N 32.6382560  LONG.: W 103.6955712  NAD 1983  X=737503  Y=596561  LAT.: N 32.6383777  LONG.: W 103.6960686  MD = 9332' </div> <div> <b>SURFACE LOCATION</b>  NEW MEXICO EAST  NAD 1927  X=696301  Y=596326  LAT.: N 32.6377832  LONG.: W 103.6956456  NAD 1983  X=737481  Y=596389  LAT.: N 32.6379049  LONG.: W 103.6961429  ELEV = 3602' </div> <div> <b>FIRST TAKE POINT</b>  NEW MEXICO EAST  NAD 1927  X=696341  Y=596224  LAT.: N 32.6375016  LONG.: W 103.6955180  NAD 1983  X=737521  Y=596287  LAT.: N 32.6376233  LONG.: W 103.6960154  MD = 9909' </div> </div>			<sup>17</sup> OPERATOR CERTIFICATION I hereby certify that the information contained herein is true and complete to the best of my knowledge and belief, and that this organization either owns a working interest or unleased mineral interest in the land including the proposed bottom hole location or has a right to drill this well at this location pursuant to a contract with an owner of such a mineral or working interest, or to a voluntary pooling agreement or a compulsory pooling order heretofore entered by the division.  3/22/2018 Signature _____ Date _____ <b>Tammy R. Link</b> Printed Name _____ tlink@matadorresources.com E-mail Address _____		
<div> <div> <b>BOTTOM HOLE LOCATION</b>  NEW MEXICO EAST  NAD 1927  X=696329  Y=591473  LAT.: N 32.6244436  LONG.: W 103.6956496  NAD 1983  X=737509  Y=591536  LAT.: N 32.6245654  LONG.: W 103.6961464  MD = 14700' </div> <div> <b>P.B.T.D.</b>  NEW MEXICO EAST  NAD 1927  X=696326  Y=591595  LAT.: N 32.6247802  LONG.: W 103.6956562  NAD 1983  X=737506  Y=591658  LAT.: N 32.6249020  LONG.: W 103.6961531  MD = 14577' </div> <div> <b>LAST TAKE POINT</b>  NEW MEXICO EAST  NAD 1927  X=696326  Y=591600  LAT.: N 32.6247940  LONG.: W 103.6956564  NAD 1983  X=737506  Y=591663  LAT.: N 32.6249157  LONG.: W 103.6961533  MD = 14572' </div> </div>			<sup>18</sup> SURVEYOR CERTIFICATION I hereby certify that the well location shown on this plat was plotted from field notes of actual surveys made by me or under my supervision, and that the same is true to the best of my belief.  04/06/17 Date of Survey _____ Signature and Seal of Professional Surveyor  Certificate Number _____		



SCALE: 1" = 1000'

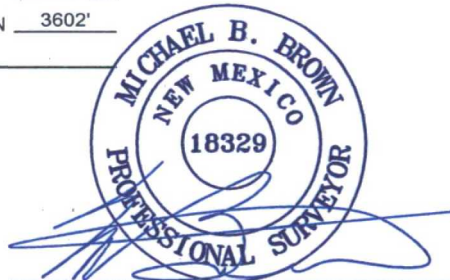
SECTION 30, TOWNSHIP 19-S, RANGE 33-E, N.M.P.M.  
LEA COUNTY, NEW MEXICO



LEASE NAME & WELL NO.: FEDERAL 30 #124H  
SECTION 30 TWP 19-S RGE 33-E SURVEY N.M.P.M.  
COUNTY LEA STATE NM ELEVATION 3602'  
DESCRIPTION 228' FNL & 698' FEL



**TOPOGRAPHIC**  
LOYALTY INNOVATION LEGACY  
1400 EVERMAN PARKWAY, Ste. 146 • FT. WORTH, TEXAS 76140  
TELEPHONE: (817) 744-7512 • FAX (817) 744-7554  
2903 NORTH BIG SPRING • MIDLAND, TEXAS 79705  
TELEPHONE: (432) 682-1653 OR (800) 767-1653 • FAX (432) 682-1743  
WWW.TOPOGRAPHIC.COM



Michael Blake Brown, P.S. No. 18329  
MARCH 20, 2018

FEDERAL 30 #124H AS-COMPLETED		REVISION:	NOTES:
DATE:	03/20/18		
FILE:	AD_FEDERAL_30_124H		1. ORIGINAL DOCUMENT SIZE: 8.5" X 11" 2. ALL BEARINGS, DISTANCES, AND COORDINATE VALUES CONTAINED HEREIN ARE GRID BASED UPON THE NEW MEXICO STATE PLANE COORDINATE SYSTEM, EAST ZONE, U.S. SURVEY FEET, NORTH AMERICAN DATUM 1983. 3. THIS WELL LOCATION SHOWN HEREON HAS BEEN SURVEYED ON THE GROUND UNDER MY SUPERVISION AND PREPARED ACCORDING TO THE EVIDENCE FOUND AT THE TIME OF SURVEY, AND DATA PROVIDED BY MATADOR PRODUCTION COMPANY. THIS CERTIFICATION IS MADE AND LIMITED TO THOSE PERSONS OR ENTITIES SHOWN ON THE FACE OF THIS PLAT AND IS NON-TRANSFERABLE. THIS SURVEY IS CERTIFIED FOR THIS TRANSACTION ONLY.
DRAWN BY:	A.M.D.		
SHEET:	1 OF 1		