

District I
1625 N. French Dr., Hobbs, NM 88240
Phone: (575) 393-6161 Fax: (575) 393-0720
District II
811 S. First St., Artesia, NM 88210
Phone: (575) 748-1283 Fax: (575) 748-9720
District III
1000 Rio Brazos Road, Aztec, NM 87410
Phone: (505) 334-6178 Fax: (505) 334-6170
District IV
1220 S. St. Francis Dr., Santa Fe, NM 87505
Phone: (505) 476-3460 Fax: (505) 476-3462

State of New Mexico
Energy, Minerals & Natural Resources Department
OIL CONSERVATION DIVISION
1220 South St. Francis Dr.
Santa Fe, NM 87505

Form C-102
Revised August 1, 2011
Submit one copy to appropriate
District Office
APR 10 2018
UNRECORDED REPORT

RECEIVED

WELL LOCATION AND ACREAGE DEDICATION PLAT

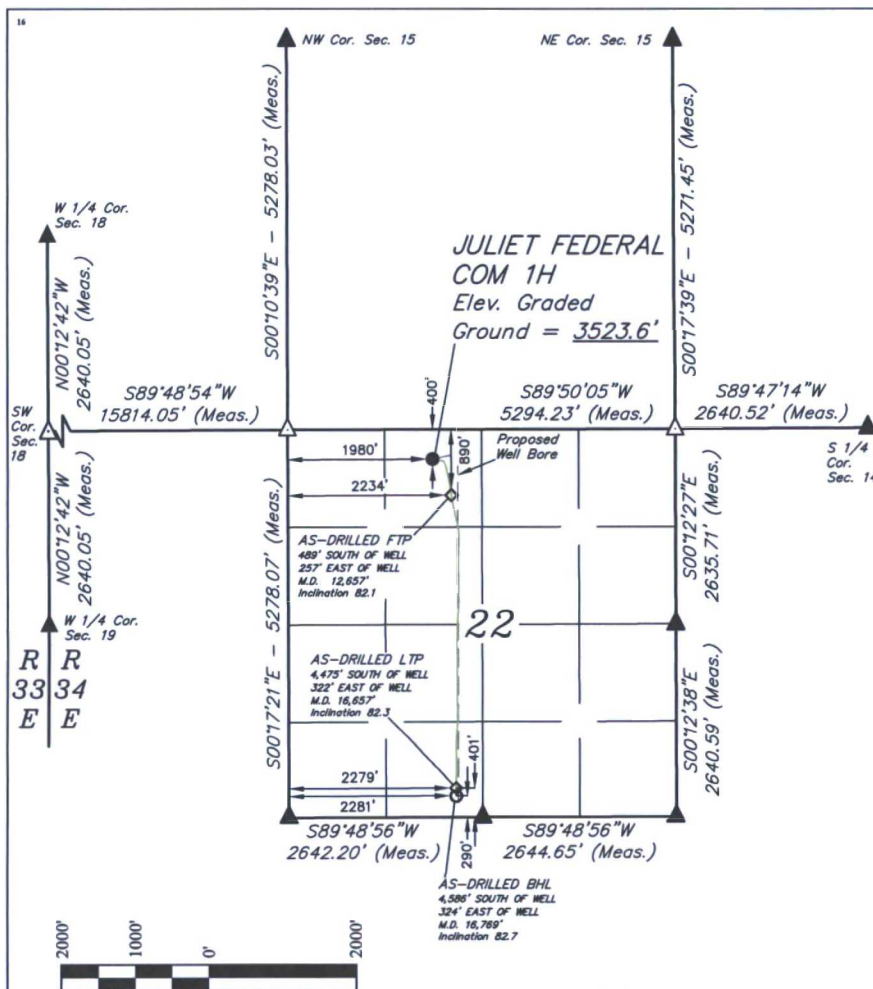
¹ API Number 30-025-43385	² Pool Code	³ Pool Name RED HILLS- BONE SPRING, NORTH
⁴ Property Code	⁵ Property Name JULIET FEDERAL COM	⁶ Well Number 1H
⁷ OGRID No. 372165	⁸ Operator Name CENTENNIAL RESOURCE PRODUCTION, LLC	⁹ Elevation 3523.6'

¹⁰ Surface Location									
UL or lot no. C	Section 22	Township 24S	Range 34E	Lot Idn	Feet from the 400	North/South line NORTH	Feet from the 1980	East/West line WEST	County LEA

¹¹ Bottom Hole Location If Different From Surface									
UL or lot no. N	Section 22	Township 24S	Range 34E	Lot Idn	Feet from the 290	North/South line SOUTH	Feet from the 2281	East/West line WEST	County LEA

¹² Dedicated Acres 160	¹³ Joint or Infill	¹⁴ Consolidation Code	¹⁵ Order No.
--------------------------------------	-------------------------------	----------------------------------	-------------------------

No allowable will be assigned to this completion until all interests have been consolidated or a non-standard unit has been approved by the division.



NAD 83 (AS-DRILLED SHL) LATITUDE = 32°12'33.08" (32.209189°) LONGITUDE = 103°27'35.96" (103.459989°) STATE PLANE NAD 83 (N.M. EAST) Y: 440934.30' X: 811451.81' UTM, NAD 83 (ZONE 13) Y: 11695064.80' X: 2116592.28'	NAD 83 (AS-DRILLED FTP) LATITUDE = 32°12'28.23" (32.207841°) LONGITUDE = 103°27'33.00" (103.459166°) STATE PLANE NAD 83 (N.M. EAST) Y: 440446.12' X: 811710.39' UTM, NAD 83 (ZONE 13) Y: 11694578.30' X: 2116853.85'
NAD 83 (AS-DRILLED LTP) LATITUDE = 32°11'48.79" (32.196887°) LONGITUDE = 103°27'32.42" (103.459006°) STATE PLANE NAD 83 (N.M. EAST) Y: 436461.31' X: 811792.30' UTM, NAD 83 (ZONE 13) Y: 11690594.60' X: 2116960.46'	NAD 83 (AS-DRILLED BHL) LATITUDE = 32°11'47.69" (32.196582°) LONGITUDE = 103°27'32.40" (103.459000°) STATE PLANE NAD 83 (N.M. EAST) Y: 436350.32' X: 811795.25' UTM, NAD 83 (ZONE 13) Y: 11690483.65' X: 2116964.09'

NAD 83 (AS-DRILLED SHL) LATITUDE = 32°12'33.08" (32.209189°) LONGITUDE = 103°27'35.96" (103.459989°) STATE PLANE NAD 83 (N.M. EAST) Y: 440934.30' X: 811451.81' UTM, NAD 83 (ZONE 13) Y: 11695064.80' X: 2116592.28'	NAD 83 (AS-DRILLED FTP) LATITUDE = 32°12'28.23" (32.207841°) LONGITUDE = 103°27'33.00" (103.459166°) STATE PLANE NAD 83 (N.M. EAST) Y: 440446.12' X: 811710.39' UTM, NAD 83 (ZONE 13) Y: 11694578.30' X: 2116853.85'
NAD 83 (AS-DRILLED LTP) LATITUDE = 32°11'48.79" (32.196887°) LONGITUDE = 103°27'32.42" (103.459006°) STATE PLANE NAD 83 (N.M. EAST) Y: 436461.31' X: 811792.30' UTM, NAD 83 (ZONE 13) Y: 11690594.60' X: 2116960.46'	NAD 83 (AS-DRILLED BHL) LATITUDE = 32°11'47.69" (32.196582°) LONGITUDE = 103°27'32.40" (103.459000°) STATE PLANE NAD 83 (N.M. EAST) Y: 436350.32' X: 811795.25' UTM, NAD 83 (ZONE 13) Y: 11690483.65' X: 2116964.09'

- NOTE:
- Distances referenced on plat to section lines are perpendicular.
 - Basis of Bearings is a Transverse Mercator Projection with a Central Meridian of W103°53'00"
 - Well Bore data provided by Centennial Resource Production, LLC
- = AS-DRILLED SURFACE HOLE LOCATION
◇ = AS-DRILLED FTP OR LTP
○ = AS-DRILLED BHL
▲ = SECTION CORNER LOCATED
△ = SECTION CORNER RE-ESTABLISHED.
(Not Set on Ground.)

"OPERATOR CERTIFICATION"
I hereby certify that the information contained herein is true and complete to the best of my knowledge and belief, and that this organization either owns a working interest or unleased mineral interest in the land including the proposed bottom hole location or has a right to drill this well at this location pursuant to a contract with an owner of such a mineral or working interest, or to a voluntary pooling agreement or a compulsory pooling order heretofore entered by the division.

Digitally signed by Melissa Luke
DN: cn=Melissa Luke, o=U.S. Geological Survey, ou=Geological Survey, email=melissa.luke@cddevinc.com
Date: 2018.03.19 13:04:43 -06'00'

Melissa Luke
Printed Name
melissa.luke@cddevinc.com
E-mail Address

"SURVEYOR CERTIFICATION"
I hereby certify that the well location shown on this plat was plotted from field notes of actual surveys made by me or under my supervision, and that the same is true and correct to the best of my belief.

January 08, 2018
Date of Survey
Signature and Seal of Professional Surveyor:

PAUL BUCHELE
NEW MEXICO
23782
03-12-18
PROFESSIONAL SURVEYOR

Certificate Number: