

District I  
1625 N. French Dr., Hobbs, NM 88240  
Phone: (575) 393-6161 Fax: (575) 393-0720  
District II  
811 S. First St., Artesia, NM 88210  
Phone: (575) 748-1283 Fax: (575) 748-9720  
District III  
1000 Rio Brazos Road, Aztec, NM 87410  
Phone: (505) 334-6178 Fax: (505) 334-6170  
District IV  
1220 S. St. Francis Dr., Santa Fe, NM 87505  
Phone: (505) 476-3460 Fax: (505) 476-3462

State of New Mexico  
Energy, Minerals & Natural Resources Department  
OIL CONSERVATION DIVISION  
1220 South St. Francis Dr.  
Santa Fe, NM 87505

Form C-102  
Revised August 1, 2011  
Submit one copy to appropriate  
District Office

☐ AMENDED REPORT

WELL LOCATION AND ACREAGE DEDICATION PLAT

<sup>1</sup> API Number <b>30-025-44664</b>	<sup>2</sup> Pool Code 98098	<sup>3</sup> Pool Name WC-025 G-09 S243532M; WOLFBONE
<sup>4</sup> Property Code <b>321166</b>	<sup>5</sup> Property Name BLUEBERRY HILL FEE 24-35-19 WA	<sup>6</sup> Well Number 5H
<sup>7</sup> OGRID No. 372098	<sup>8</sup> Operator Name MARATHON OIL PERMIAN LLC	<sup>9</sup> Elevation 3337'

<sup>10</sup> Surface Location

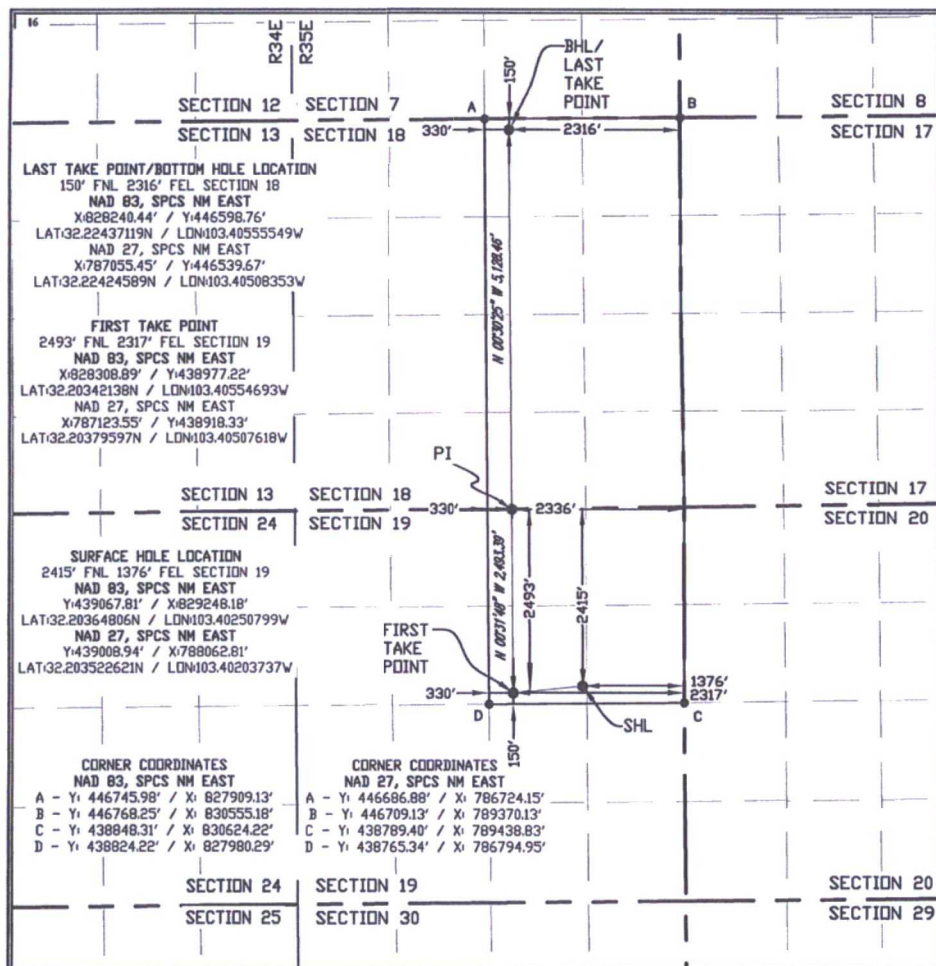
UL or lot no.	Section	Township	Range	Lot Idn	Feet from the	North/South line	Feet from the	East/West line	County
G	19	24S	35E		2415	NORTH	1376	EAST	LEA

<sup>11</sup> Bottom Hole Location If Different From Surface

UL or lot no.	Section	Township	Range	Lot Idn	Feet from the	North/South line	Feet from the	East/West line	County
B	18	24S	35E		150	NORTH	2316	EAST	LEA

<sup>12</sup> Dedicated Acres 480.00	<sup>13</sup> Joint or Infill	<sup>14</sup> Consolidation Code	<sup>15</sup> Order No.
---	-------------------------------	----------------------------------	-------------------------

No allowable will be assigned to this completion until all interests have been consolidated or a non-standard unit has been approved by the division.



<sup>17</sup> OPERATOR CERTIFICATION

I hereby certify that the information contained herein is true and complete to the best of my knowledge and belief, and that this organization either owns a working interest or unleased mineral interest in the land including the proposed bottom hole location or has a right to drill this well at this location pursuant to a contract with an owner of such a mineral or working interest, or to a voluntary pooling agreement or a compulsory pooling order heretofore entered by the division.

Signature  Date 03/26/2018

Printed Name Melissa Szudera

mszudera@marathonoil.com  
E-mail Address

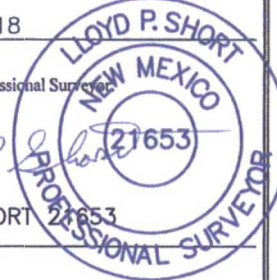
<sup>18</sup> SURVEYOR CERTIFICATION

I hereby certify that the well location shown on this plat was plotted from field notes of actual surveys made by me or under my supervision, and that the same is true and correct to the best of my belief.

MARCH 08, 2018

Date of Survey

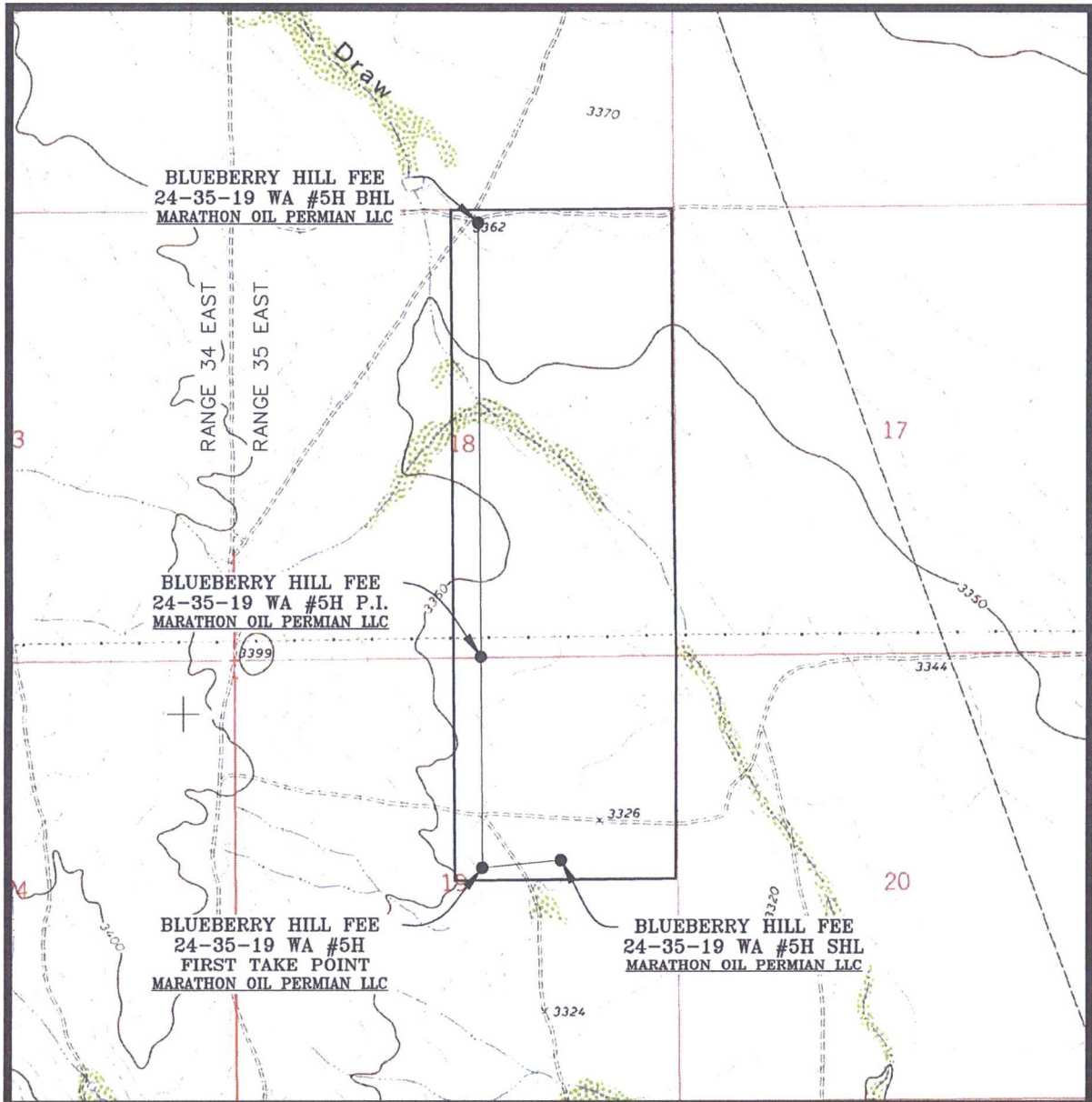
Signature and Seal of Professional Surveyor

  
LLOYD P. SHORT 21653

Certificate Number

2	03/02/2018	CAP
REV.	DATE	BY

# LOCATION VERIFICATION MAP

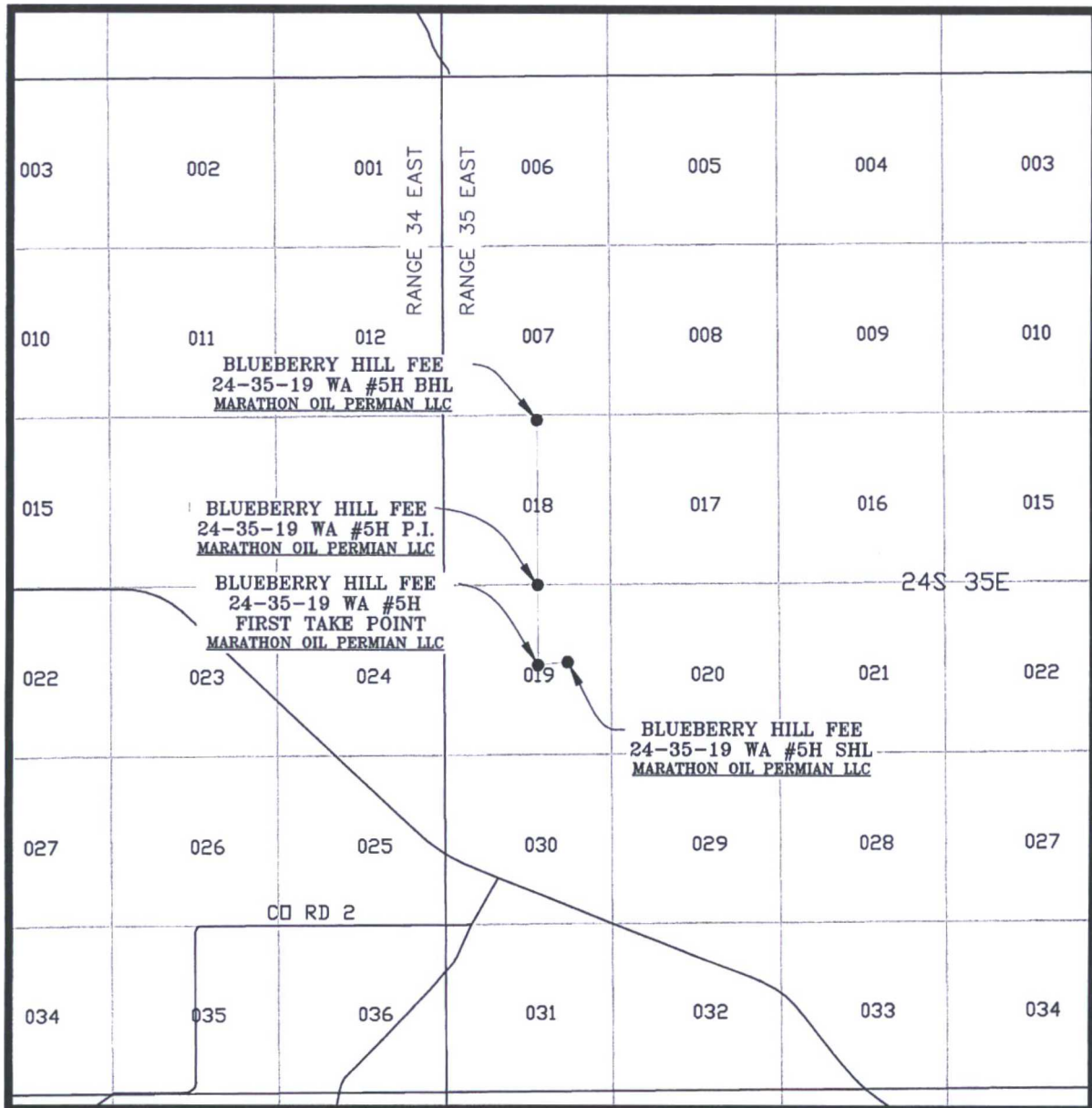


SEC. 19 TWP. 24-S RGE. 35-E  
SURVEY: N.M.P.M.  
COUNTY: LEA  
DESCRIPTION: 2415' FNL & 1376' FEL  
ELEVATION: 3337'  
OPERATOR: MARATHON OIL PERMIAN LLC  
LEASE: BLUEBERRY HILL FEE 24-35-19  
U.S.G.S. TOPOGRAPHIC MAP: WOODLEY FLATS, N.M.

SCALE: 1" = 2000'  
CONTOUR INTERVAL = 10'

PREPARED BY:  
R-SQUARED GLOBAL, LLC  
1309 LOUISVILLE AVENUE, MONROE, LA 71201  
318-323-8900 OFFICE  
JOB No. R3837\_001

# VICINITY MAP



SEC. 19 TWP. 24-S RGE. 35-E  
 SURVEY: N.M.P.M.  
 COUNTY: LEA  
 DESCRIPTION: 2415' FNL & 1376' FEL  
 ELEVATION: 3337'  
 OPERATOR: MARATHON OIL PERMIAN LLC  
 LEASE: BLUEBERRY HILL FEE 24-35-19  
 U.S.G.S. TOPOGRAPHIC MAP: WOODLEY FLATS, N.M.

SCALE: 1" = 1 MILE

PREPARED BY:  
 R-SQUARED GLOBAL, LLC  
 1309 LOUISVILLE AVENUE, MONROE, LA 71201  
 318-323-6900 OFFICE  
 JOB No. R3837\_001