

UNITED STATES
DEPARTMENT OF THE INTERIOR
BUREAU OF LAND MANAGEMENTFORM APPROVED
OMB NO. 1004-0137
Expires: January 31, 2018**SUNDRY NOTICES AND REPORTS ON WELLS**
*Do not use this form for proposals to drill or to re-enter an abandoned well. Use form 3160-3 (APD) for such proposals.*5. Lease Serial No.
NMNM18848

6. Indian, Allottee or Tribe Name

SUBMIT IN TRIPLICATE - Other instructions on page 2

APR 02 2018

1. Type of Well
☒ Oil Well ☐ Gas Well ☐ Other8. Well Name and No.
Multiple--See Attached2. Name of Operator
XTO ENERGY INCORPORATED
Contact: PATTY R URIAS
E-Mail: PATTY_URIAS@XTOENERGY.COM9. API Well No.
Multiple--See Attached3a. Address
6401 HOLIDAY HILL ROAD BLDG 5
MIDLAND, TX 797073b. Phone No. (include area code)
Ph: 432-620-4318
Fx: 432-618-353010. Field and Pool or Exploratory Area
Multiple--See Attached4. Location of Well (Footage, Sec., T., R., M., or Survey Description)
Multiple--See Attached11. County or Parish, State
LEA COUNTY, NM**12. CHECK THE APPROPRIATE BOX(ES) TO INDICATE NATURE OF NOTICE, REPORT, OR OTHER DATA**

TYPE OF SUBMISSION	TYPE OF ACTION			
<input checked="" type="checkbox"/> Notice of Intent	<input type="checkbox"/> Acidize	<input type="checkbox"/> Deepen	<input type="checkbox"/> Production (Start/Resume)	<input type="checkbox"/> Water Shut-Off
<input type="checkbox"/> Subsequent Report	<input type="checkbox"/> Alter Casing	<input type="checkbox"/> Hydraulic Fracturing	<input type="checkbox"/> Reclamation	<input type="checkbox"/> Well Integrity
<input type="checkbox"/> Final Abandonment Notice	<input type="checkbox"/> Casing Repair	<input type="checkbox"/> New Construction	<input type="checkbox"/> Recomplete	<input checked="" type="checkbox"/> Other
	<input type="checkbox"/> Change Plans	<input type="checkbox"/> Plug and Abandon	<input type="checkbox"/> Temporarily Abandon	Venting and/or Flaring
	<input type="checkbox"/> Convert to Injection	<input type="checkbox"/> Plug Back	<input type="checkbox"/> Water Disposal	

13. Describe Proposed or Completed Operation: Clearly state all pertinent details, including estimated starting date of any proposed work and approximate duration thereof. If the proposal is to deepen directionally or recompleat horizontally, give subsurface locations and measured and true vertical depths of all pertinent markers and zones. Attach the Bond under which the work will be performed or provide the Bond No. on file with BLM/BIA. Required subsequent reports must be filed within 30 days following completion of the involved operations. If the operation results in a multiple completion or recompleat in a new interval, a Form 3160-4 must be filed once testing has been completed. Final Abandonment Notices must be filed only after all requirements, including reclamation, have been completed and the operator has determined that the site is ready for final inspection.

SDE 31 FED CTB

REQUEST FOR FLARE METERING EXCEPTION

Because there is no flare meter at the SDE 31 FED CTB, XTO Energy Inc. is requesting the BLM acknowledge that its method for estimating volumes of flared production from SDE 31 FED CTB complies with NTL-4A and, therefore, that no flare meter is required at the SDE 19 FED CTB.

XTO estimates the flare start date based on a comparison of the metered sales volume to the daily average sales volumes. Specifically, XTO divides the theoretical flare volume (derived by the difference between the average sales volumes and the actual sales volume for a given duration) by the average daily sales volume and then multiplies that figure by 24 to determine an estimated

14. I hereby certify that the foregoing is true and correct.

Electronic Submission #398079 verified by the BLM Well Information System
For XTO ENERGY INCORPORATED, sent to the Hobbs
Committed to AFMSS for processing by JENNIFER SANCHEZ on 12/20/2017 (18JAS0335SE)

Name (Printed/Typed) PATTY R URIAS

Title REGULATORY ANALYST

Signature (Electronic Submission)

Date 12/14/2017

THIS SPACE FOR FEDERAL OR STATE OFFICE USE

Approved By CHRISTOPHER WALLS

Title PETROLEUM ENGINEER

Date 03/26/2018

Conditions of approval, if any, are attached. Approval of this notice does not warrant or certify that the applicant holds legal or equitable title to those rights in the subject lease which would entitle the applicant to conduct operations thereon.

Office Hobbs

Title 18 U.S.C. Section 1001 and Title 43 U.S.C. Section 1212, make it a crime for any person knowingly and willfully to make to any department or agency of the United States any false, fictitious or fraudulent statements or representations as to any matter within its jurisdiction.

(Instructions on page 2)

**** BLM REVISED ** BLM REVISED ** BLM REVISED ** BLM REVISED ** BLM REVISED ****

MSB/OCD 4/3/2018

Additional data for EC transaction #398079 that would not fit on the form

Wells/Facilities, continued

Agreement	Lease	Well/Fac Name, Number	API Number	Location
NMNM18848	NMNM18848	SDE 31 FEDERAL 01	30-025-32676-00-C1	Sec 31 T23S R32E NWNW 660FNL 660FWL
NMNM18848	NMNM18848	SDE 31 FEDERAL 01	30-025-32676-00-C2	Sec 31 T23S R32E NWNW 660FNL 660FWL
NMNM18848	NMNM18848	SDE 31 FEDERAL 02	30-025-32701-00-C1	Sec 31 T23S R32E NENW 660FNL 1980FWL
NMNM18848	NMNM18848	SDE 31 FEDERAL 02	30-025-32701-00-C2	Sec 31 T23S R32E NENW 660FNL 1980FWL
NMNM18848	NMNM18848	SDE 31 FEDERAL 04	30-025-32716-00-C1	Sec 31 T23S R32E SENW 1980FNL 1980FWL
NMNM18848	NMNM18848	SDE 31 FEDERAL 04	30-025-32716-00-C2	Sec 31 T23S R32E SENW 1980FNL 1980FWL
NMNM18848	NMNM18848	SDE 31 FEDERAL 08	30-025-32867-00-C1	Sec 31 T23S R32E NESW 1980FSL 1980FWL
NMNM18848	NMNM18848	SDE 31 FEDERAL 08	30-025-32867-00-C2	Sec 31 T23S R32E NESW 1980FSL 1980FWL
NMNM18848	NMNM18848	SDE 31 FEDERAL 14	30-025-32916-00-C1	Sec 31 T23S R32E SESW 660FSL 1980FWL
NMNM18848	NMNM18848	SDE 31 FEDERAL 14	30-025-32916-00-C2	Sec 31 T23S R32E SESW 660FSL 1980FWL
NMNM18848	NMNM18848	SDE 31 FEDERAL 15	30-025-32917-00-C1	Sec 31 T23S R32E SWSE 660FSL 1980FEL
NMNM18848	NMNM18848	SDE 31 FEDERAL 15	30-025-32917-00-C2	Sec 31 T23S R32E SWSE 660FSL 1980FEL
NMNM18848	NMNM18848	SDE 31 FEDERAL 16	30-025-38138-00-S1	Sec 31 T23S R32E SWSW 660FSL 900FWL
NMNM18848	NMNM18848	SDE 31 FEDERAL 17	30-025-38088-00-C1	Sec 31 T23S R32E SWNE 1900FNL 2310FEL
NMNM18848	NMNM18848	SDE 31 FEDERAL 17	30-025-38088-00-C2	Sec 31 T23S R32E SWNE 1900FNL 2310FEL
NMNM18848	NMNM18848	SDE 31 FEDERAL 18H	30-025-40460-00-S1	Sec 31 T23S R32E SESE 350FSL 680FEL

10. Field and Pool, continued

TRISTE DRAW-DELAWARE
TRISTE DRAW-DELAWARE, WEST

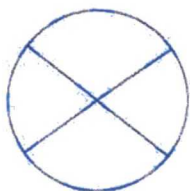
32. Additional remarks, continued

number of hours.

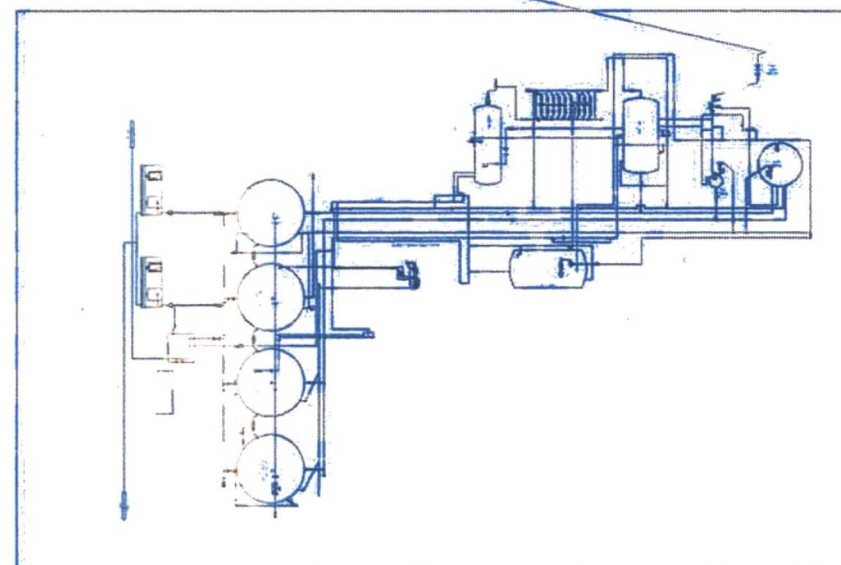
The sales meter is the first meter for the production (there is no separate production meter). XTO determines the flared volumes by comparing the sales volume during the period of flaring to the average sales volume. Specifically, XTO subtracts the actual sales volume from an average of sales volume (both figures taken from the sales meter). XTO will use a rolling 12 month production average as requested by the BLM for future sundries, as we as revise our prior sundries and OGORs based on the 12 month average.

ASSOCIATED WELLS:

SDE 31 FEDERAL #001 Federal 30-025-32676
SDE 31 FEDERAL #001 Federal 30-025-32676
SDE 31 FEDERAL #002 Federal 30-025-32701
SDE 31 FEDERAL #002 Federal 30-025-32701
SDE 31 FEDERAL #004 Federal 30-025-32716
SDE 31 FEDERAL #004 Federal 30-025-32716
SDE 31 FEDERAL #008 Federal 30-025-32867
SDE 31 FEDERAL #008 Federal 30-025-32867
SDE 31 FEDERAL #014 Federal 30-025-32916
SDE 31 FEDERAL #014 Federal 30-025-32916
SDE 31 FEDERAL #015 Federal 30-025-32917
SDE 31 FEDERAL #015 Federal 30-025-32917
SDE 31 FEDERAL #016 Federal 30-025-38138
SDE 31 FEDERAL #017 Federal 30-025-38088
SDE 31 FEDERAL #017 Federal 30-025-38088
SDE 31 FEDERAL #018H Federal 30-025-40460
SDE 31 FEDERAL #009 Federal 30-025-32868



Flare
Stack



Rev	Description of Change	Date	By
1	INITIAL REVIEW	12-17-13	PCP
2	Regulatory Review	2-27-14	DKB



SAND DUNES E

SECTION 21 BATTERY
LEA COUNTY, TEXAS

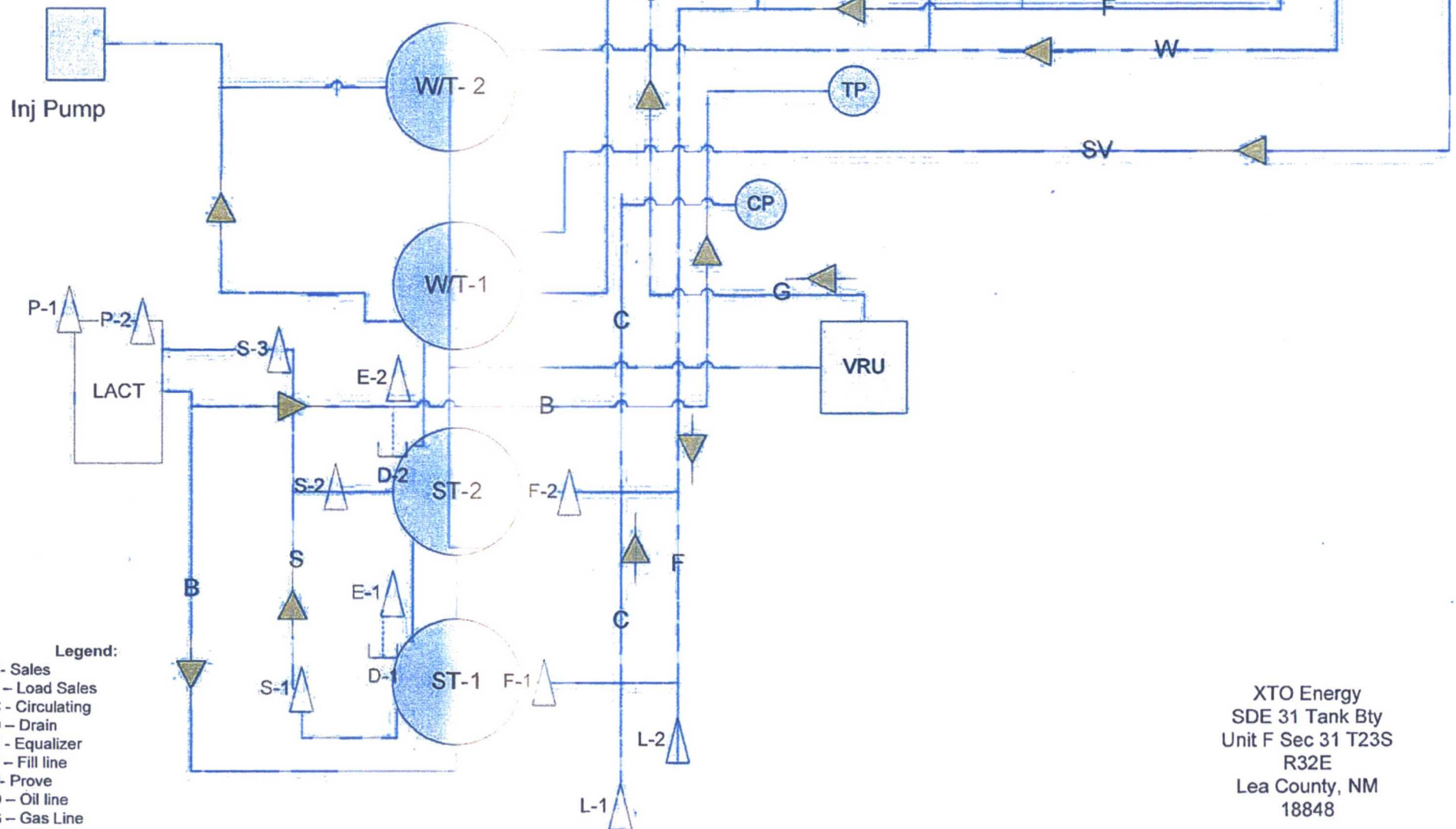
PROCESS FLOW DIAGRAM

XTO - PB - OSDE - 031TB - LFD - 000 - 421

Company: XTO Energy Phase: Final Facility: Doc Type: Date: Size:

SDE 31 Fed Tank Bty

Duke #13155034



XTO Energy
SDE 31 Tank Bty
Unit F Sec 31 T23S
R32E
Lea County, NM
18848

SDE 31 CTB

Month/Year	Avg Daily total	Rolling 12	Rolling 12				
		Mo Hourly	Mo Daily				
		Avg	Avg				
2011							
January	306						
February	282						
March	355						
April	332						
May	259						
June	300						
July	275						
August	269						
September	316						
October	329						
November	275						
December	228						
12 Month Total		3526					
2012							
January	277	12	291	Total Rolling 12 Months	February-11	to	January-12
February	281	12	291	Total Rolling 12 Months	March-11	to	February-12
March	297	12	287	Total Rolling 12 Months	April-11	to	March-12
April	254	12	280	Total Rolling 12 Months	May-11	to	April-12
May	285	12	282	Total Rolling 12 Months	June-11	to	May-12
June	264	12	279	Total Rolling 12 Months	July-11	to	June-12
July	240	12	276	Total Rolling 12 Months	August-11	to	July-12
August	230	11	273	Total Rolling 12 Months	September-11	to	August-12
September	178	11	262	Total Rolling 12 Months	October-11	to	September-12
October	201	10	251	Total Rolling 12 Months	November-11	to	October-12
November	159	10	241	Total Rolling 12 Months	December-11	to	November-12
December	173	10	237	Total Rolling 12 Months	January-12	to	December-12
12 Month Total		2839					
2013							
January	242	10	234	Total Rolling 12 Months	February-13	to	January-14
February	244	10	231	Total Rolling 12 Months	March-13	to	February-14
March	245	9	226	Total Rolling 12 Months	April-13	to	March-14
April	232	9	224	Total Rolling 12 Months	May-13	to	April-14
May	256	9	222	Total Rolling 12 Months	June-13	to	May-14
June	258	9	222	Total Rolling 12 Months	July-13	to	June-14
July	206	9	219	Total Rolling 12 Months	August-13	to	July-14
August	269	9	222	Total Rolling 12 Months	September-13	to	August-14
September	252	10	228	Total Rolling 12 Months	October-13	to	September-14
October	198	9	228	Total Rolling 12 Months	November-13	to	October-14
November	192	10	231	Total Rolling 12 Months	December-13	to	November-14
December	180	10	231	Total Rolling 12 Months	January-14	to	December-14
12 Month Total		2774					

SDE 31 CTB

Month/Year	Avg Daily total	Rolling 12 Mo Hourly Avg	Rolling 12 Mo Daily Avg				
2014							
January	222	10	230	Total Rolling 12 Months	February-13	to	January-14
February	144	9	221	Total Rolling 12 Months	March-13	to	February-14
March	217	9	219	Total Rolling 12 Months	April-13	to	March-14
April	395	10	232	Total Rolling 12 Months	May-13	to	April-14
May	231	10	230	Total Rolling 12 Months	June-13	to	May-14
June	383	10	241	Total Rolling 12 Months	July-13	to	June-14
July	369	11	254	Total Rolling 12 Months	August-13	to	July-14
August	296	11	257	Total Rolling 12 Months	September-13	to	August-14
September	221	11	254	Total Rolling 12 Months	October-13	to	September-14
October	244	11	258	Total Rolling 12 Months	November-13	to	October-14
November	242	11	262	Total Rolling 12 Months	December-13	to	November-14
December	249	11	268	Total Rolling 12 Months	January-14	to	December-14
12 Month Total		3213					
2015							
January	252	11	270	Total Rolling 12 Months	February-14	to	January-15
February	263	12	280	Total Rolling 12 Months	March-14	to	February-15
March	225	12	281	Total Rolling 12 Months	April-14	to	March-15
April	218	11	266	Total Rolling 12 Months	May-14	to	April-15
May	185	11	262	Total Rolling 12 Months	June-14	to	May-15
June	193	10	246	Total Rolling 12 Months	July-14	to	June-15
July	216	10	234	Total Rolling 12 Months	August-14	to	July-15
August	246	10	230	Total Rolling 12 Months	September-14	to	August-15
September	204	10	228	Total Rolling 12 Months	October-14	to	September-15
October	232	9	227	Total Rolling 12 Months	November-14	to	October-15
November	166	9	221	Total Rolling 12 Months	December-14	to	November-15
December	170	9	214	Total Rolling 12 Months	January-15	to	December-15
12 Month Total		2570					
2016							
January	171	9	207	Total Rolling 12 Months	February-15	to	January-16
February	200	8	202	Total Rolling 12 Months	March-15	to	February-16
March	181	8	199	Total Rolling 12 Months	April-15	to	March-16
April	193	8	196	Total Rolling 12 Months	May-15	to	April-16
May	211	8	199	Total Rolling 12 Months	June-15	to	May-16
June	112	8	192	Total Rolling 12 Months	July-15	to	June-16
July	200	8	191	Total Rolling 12 Months	August-15	to	July-16
August	200	8	187	Total Rolling 12 Months	September-15	to	August-16
September	131	8	181	Total Rolling 12 Months	October-15	to	September-16
October	186	7	177	Total Rolling 12 Months	November-15	to	October-16
November	169	7	177	Total Rolling 12 Months	December-15	to	November-16
December	123	7	173	Total Rolling 12 Months	January-16	to	December-16
12 Month Total		2077					
2017							
January	140	7	171	Total Rolling 12 Months	February-16	to	January-17
February	152	7	167	Total Rolling 12 Months	March-16	to	February-17
March	141	7	163	Total Rolling 12 Months	April-16	to	March-17