

DISTRICT I
1625 N. French Dr., Hobbs, NM 88240
Phone (505) 393-8181 Fax: (505) 393-0720

DISTRICT II
811 S. First St., Artesia, NM 88210
Phone (505) 748-1283 Fax: (505) 748-9720

DISTRICT III
1000 Rio Brazos Rd., Aztec, NM 87410
Phone (505) 334-6178 Fax: (505) 334-6170

DISTRICT IV
1220 S. St. Francis Dr., Santa Fe, NM 87505
Phone (505) 476-3400 Fax: (505) 476-3408

State of New Mexico
Energy, Minerals and Natural Resources Department

Form C-102
Revised August 4, 2011

Submit one copy to appropriate
District Office

OIL CONSERVATION DIVISION
1220 South St. Francis Dr.
Santa Fe, New Mexico 87505

RECEIVED

☐ AMENDED REPORT

WELL LOCATION AND ACREAGE DEDICATION PLAT

API Number 30-025-43909	Pool Code 97929	Pool Name WC-025 G-06 5213326D; Bone Spring
Property Code 319603	Property Name MERCHANT STATE UNIT	Well Number 503H
OGRID No. 372417	Operator Name ADVANCE ENERGY PARTNERS HAT MESA	Elevation 3667'

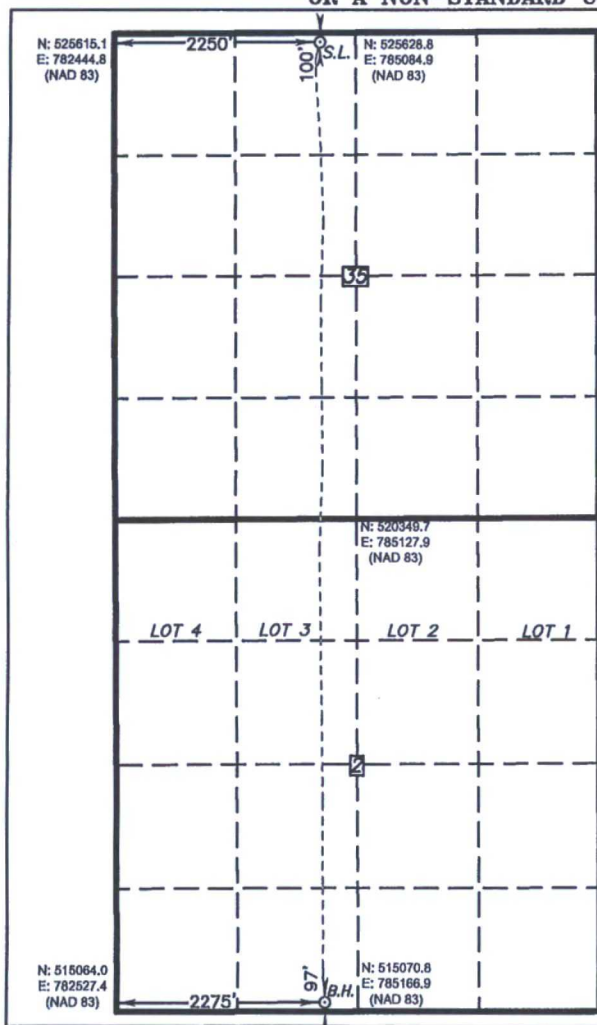
Surface Location

UL or lot No.	Section	Township	Range	Lot Idn	Feet from the	SOUTH/South line	Feet from the	East/West line	County
C	35	21 S	33 E		100	NORTH	2250	WEST	LEA

Bottom Hole Location If Different From Surface

UL or lot No.	Section	Township	Range	Lot Idn	Feet from the	SOUTH/South line	Feet from the	East/West line	County
N	2	22 S	33 E		97	SOUTH	2275	WEST	LEA
Dedicated Acres	Joint or Infill	Consolidation Code	Order No.						

**NO ALLOWABLE WILL BE ASSIGNED TO THIS COMPLETION UNTIL ALL INTERESTS HAVE BEEN CONSOLIDATED
OR A NON-STANDARD UNIT HAS BEEN APPROVED BY THE DIVISION**



SURFACE LOCATION
Lat - N 32.442268°
Long - W 103.544477°
NMSPCE - N 525526.9
E 784695.8
(NAD-83)

N: 523003.9
E: 787744.2
(NAD 83)

N: 520364.7
E: 787766.4
(NAD 83)

NOTE:
As-Drilled C-102 location data prepared
from Drilling Report provided by Advance
Energy.
Section corner data provided provided by
this office.

N: 517723.8
E: 787786.4
(NAD 83)

**PROPOSED BOTTOM
HOLE LOCATION**
Lat - N 32.413791°
Long - W 103.544383°
NMSPCE - N 515166.9
E 784801.3
(NAD-83)

N: 515077.6
E: 787806.5
(NAD 83)

OPERATOR CERTIFICATION

I hereby certify that the information
contained herein is true and complete to
the best of my knowledge and belief, and that
this organization either owns a working
interest or unleased mineral interest in the
land including the proposed bottom hole
location or has a right to drill this well at
this location pursuant to a contract with an
owner of such a mineral or working interest,
or to a voluntary pooling agreement or a
compulsory pooling order heretofore entered by
the division.

Signature *[Signature]* Date **04-11-2018**

Printed Name **BRADEN HARRIS**

Email Address **bharris@advanceenergypartners.com**

SURVEYOR CERTIFICATION

I hereby certify that the well location shown
on this plat was plotted from field notes of
actual surveys made by me or under my
supervision, and that the same is true and
correct to the best of my belief.

Date Surveyed **APRIL 11, 2018**
Signature & Seal of Professional Surveyor

Certificate No. **7977**
BASIN SURVEYOR

Scale: 1" = 1000'
WO Num.: 33674