

District I  
1625 N. French Dr., Hobbs, NM 88240  
Phone: (575) 393-6161 Fax: (575) 393-0720  
District II  
811 S. First St., Artesia, NM 88210  
Phone: (575) 748-1283 Fax: (575) 748-1723  
District III  
1000 Rio Brazos Road, Aztec, NM 87410  
Phone: (505) 334-6178 Fax: (505) 334-6170  
District IV  
1220 S. St. Francis Dr., Santa Fe, NM 87505  
Phone: (505) 476-3460 Fax: (505) 476-3462

State of New Mexico

Energy, Minerals & Natural Resources Department

OIL CONSERVATION DIVISION

1220 South St. Francis Dr.

Santa Fe, NM 87505

Form C-102

Revised August 1, 2011

Submit one copy to appropriate

District Office

☒ AMENDED REPORT  
AS DRILLED

WELL LOCATION AND ACREAGE DEDICATION PLAT

<sup>1</sup> API Number 30-025-43830	<sup>2</sup> Pool Code 8146	<sup>3</sup> Pool Name BUFFALO; BONE SPRING; SOUTHEAST
<sup>4</sup> Property Code 317783	<sup>5</sup> Property Name BUFFALO WEST 2 STATE COM 2BS	<sup>6</sup> Well Number 3H
<sup>7</sup> OGRID No. 372137	<sup>8</sup> Operator Name CHISHOLM ENERGY OPERATING, LLC	<sup>9</sup> Elevation 3766'

<sup>10</sup> Surface Location

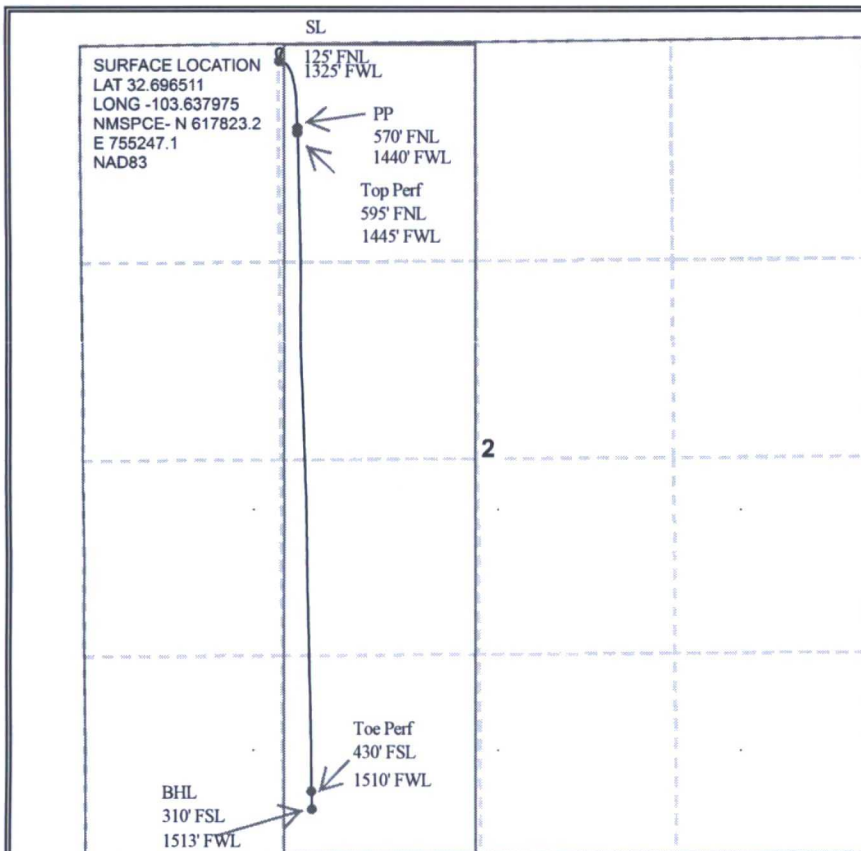
UL or lot no.	Section	Township	Range	Lot Idn	Feet from the	North/South line	Feet from the	East/West line	County
LOT 3	2	19S	33E		125	NORTH	1325	WEST	LEA

<sup>11</sup> Bottom Hole Location If Different From Surface

UL or lot no.	Section	Township	Range	Lot Idn	Feet from the	North/South line	Feet from the	East/West line	County
N	2	19S	33E		310	SOUTH	1513	WEST	LEA

<sup>12</sup> Dedicated Acres 163.98	<sup>13</sup> Joint or Infill	<sup>14</sup> Consolidation Code	<sup>15</sup> Order No.
---	-------------------------------	----------------------------------	-------------------------

No allowable will be assigned to this completion until all interests have been consolidated or a non-standard unit has been approved by the division.



SURFACE LOCATION  
LAT 32.682818  
LONG -103.63737  
NMSPC- N 612842.4  
E 755465.8  
NAD83

<sup>17</sup> OPERATOR CERTIFICATION

I hereby certify that the information contained herein is true and complete to the best of my knowledge and belief, and that this organization either owns a working interest or unleased mineral interest in the land including the proposed bottom hole location or has a right to drill this well at this location pursuant to a contract with an owner of such a mineral or working interest, or to a voluntary pooling agreement or a compulsory pooling order heretofore entered by the division.

*Jennifer Elrod* 02/02/18  
Signature Date

JENNIFER ELROD  
Printed Name

jelrod@chisholmenergy.com  
E-mail Address

<sup>18</sup> SURVEYOR CERTIFICATION

I hereby certify that the well location shown on this plat was plotted from field notes of actual surveys made by me or under my supervision, and that the same is true and correct to the best of my belief.

*on file*  
Date of Survey  
Signature and Seal of Professional Surveyor:

Certificate Number