

DISTRICT I  
1625 N. FRENCH DR., HOBBS, NM 88240  
Phone: (505) 383-8161 Fax: (505) 383-0720

DISTRICT II  
811 S. FIRST ST., ARTESIA, NM 88210  
Phone: (505) 748-1283 Fax: (505) 748-9720

DISTRICT III  
1000 RIO BRAZOS RD., AZTEC, NM 87410  
Phone: (505) 334-8178 Fax: (505) 334-8170

DISTRICT IV  
1220 S. ST. FRANCIS DR., SANTA FE, NM 87505  
Phone: (505) 476-3480 Fax: (505) 476-3482

State of New Mexico  
Energy, Minerals & Natural Resources Department  
**HOBBES** CONSERVATION DIVISION  
1320 SOUTH ST. FRANCIS DR.  
Santa Fe, New Mexico 87505

Form C-102  
Revised August 1, 2011  
Submit one copy to appropriate  
District Office

☐ AMENDED REPORT

RECEIVED

WELL LOCATION AND ACREAGE DEDICATION PLAT

API Number <b>30-025-42040</b>	Pool Code <b>960</b>	Pool Name <b>Airstrip; Bone Spring</b>
Property Code <b>313197</b>	Property Name <b>KINGFISHER STATE COM</b>	Well Number <b>3H</b>
OGRID No. <b>229137</b>	Operator Name <b>COG OPERATING, LLC</b>	Elevation <b>3992.6</b>

Surface Location

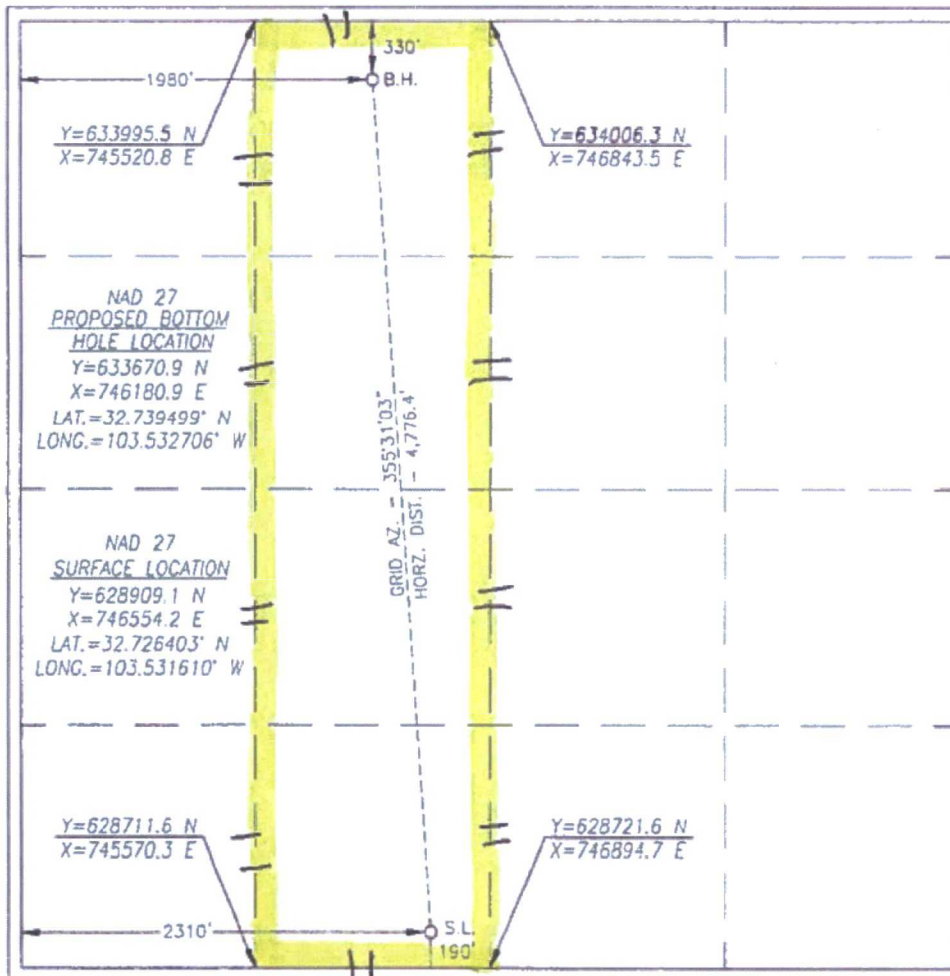
UL or lot No.	Section	Township	Range	Lot Idn	Feet from the	North/South line	Feet from the	East/West line	County
N	23	18-S	34-E		190	SOUTH	2310	WEST	LEA

Bottom Hole Location If Different From Surface

UL or lot No.	Section	Township	Range	Lot Idn	Feet from the	North/South line	Feet from the	East/West line	County
C	23	18-S	34-E		330	NORTH	1980	WEST	LEA

Dedicated Acres <b>160</b>	Joint or Infill	Consolidation Code	Order No.
-------------------------------	-----------------	--------------------	-----------

NO ALLOWABLE WILL BE ASSIGNED TO THIS COMPLETION UNTIL ALL INTERESTS HAVE BEEN CONSOLIDATED  
OR A NON-STANDARD UNIT HAS BEEN APPROVED BY THE DIVISION



OPERATOR CERTIFICATION

I hereby certify that the information herein is true and complete to the best of my knowledge and belief, and that this organization either owns a working interest or unleased mineral interest in the land including the proposed bottom hole location or has a right to drill this well at this location pursuant to a contract with an owner of such mineral or working interest, or to a voluntary pooling agreement or a compulsory pooling order heretofore entered by the division.

*Mayte Reyes* 5-3-18  
Signature Date

**Mayte Reyes**  
Printed Name  
**mreyes1@concho.com**  
E-mail Address

SURVEYOR CERTIFICATION

I hereby certify that the well location shown on this plat was plotted from field notes of actual surveys made by me or under my supervision, and that the same is true and correct to the best of my belief.

NOVEMBER 21, 2013

Date of Survey

Signature & Seal of Professional Surveyor



*Chad Harcrow* 3/30/14  
Certificate No. **CHAD HARCROW 17777**  
W.O. # 14-260 DRAWN BY: SP