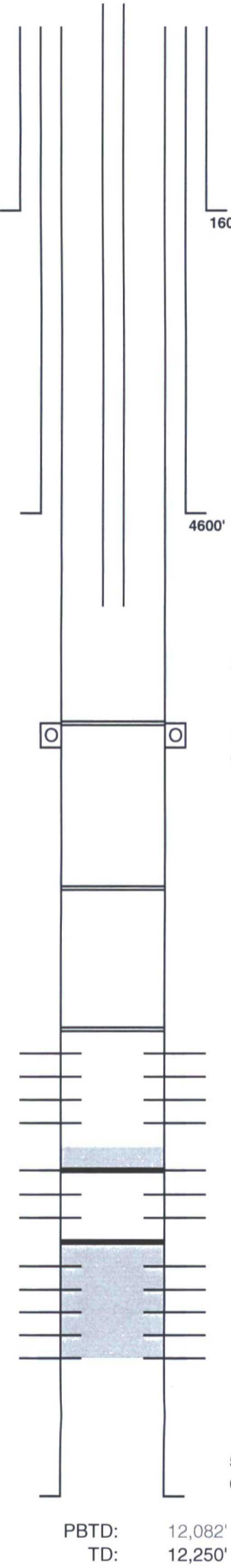


Beams 15 State #5
Plugback Procedure

1. MIRUPU. POOH & LD all rods and pump. ND WH. NU 5M Double Hydraulic BOP w/ 2 7/8" pipe rams. Set flowback tank and 6 clean frac tanks. Unset TAC
2. RU pump truck and pump 15 bbls of fresh water mixed with gel. POOH w/ tubing. LD \pm 135 jts of tubing on ground.
3. RU Wireline truck. Set a CIBP @ \pm 10,200' on wireline. Dump bail 35' of cement on top.
4. RU Pump truck. Load casing with approximately 248 bbls of fresh water mixed with gel and pressure test to 1000 psi.
5. Set 2nd CIBP @ \pm 8,600' on wireline. Dump bail 35' of cement on top.
6. Set 3rd CIBP @ \pm 6,420' on wireline. Dump bail 35' of cement on top.
7. Commence recompletion in the Paddock.



RKB 4191'
GL 4175'

Lease & Well No.: **Beams 15 State # 5**

Well Category:
Area: **New Mexico**
Subarea: **Buckeye**
Legal Description: **API #30-025-42718**
K, 1950' FSL, 1650' FWL, Sec 15, T-17-S, R-33-E
Lea County, NM

1600"
17 1/2" hole
13 3/8" 54.5# J55
set @ 1560'
1100 sx cement
TOC = SURF

4600'
12 1/4" hole
8 5/8" 32# J-55 & HCK 55
set @ 4,600'
1783 sx cement.
TOC = SURF

Spudded: **9/2/2015**
TD: **10/9/2015**
Completed: **4/7/2016**

Stimulation: 11/11/15 Cisco - 6,000 gals 15% HCL + 4,000 gals slickwater + 200 ball sealers.
01/06/16 Cisco- 10k gals 20# x-link gel + 20k gals 15% HCL gelled acid w/ additives
03/03/16 Wolfcamp- 400 gals 15% HCL NeFe
03/17/16 Wolfcamp- 200 gals 15% HCL NeFe
03/22/16 Wolfcamp- 1500 gals 15% HCL NeFe
03/28/16 Wolfcamp- 2000 gals 15% HCL NeFe
03/31/16 Wolfcamp- 2000 gals 15% HCL NeFe
04/05/16 Wolfcamp- 1500 gals 15% HCL NeFe

PRESSURE DATA
11/30/2015- BHP= 3112 psi @ 11,110', T= 148 deg F

CIBP @ 6420' + 35' cmt (PROPOSED)

DV tool @ 6,490'
Cmt'd 2nd Stage w/ 335 sks

CIBP @ 8,600' [Abo] + 35' cmt (PROPOSED)

CIBP @ 10,200' + 35' cmt (PROPOSED)
Wolfcamp Perfs

(10,234'-40') 4 SPF
(10,289'-96') 4 SPF
(10,685'-95') 4 SPF
(10,718'-22') 4 SPF

CIBP @ 10,790' + 35' cmt
(10,815'-23') 4 SPF
(10,915-29') 4 SPF SQUEEZED

Cement Retainer @ 10,991'
Cisco Perfs (SQUEEZED)
(11,073-86') 4 SPF
(11,099-11,113') 4 SPF
(11,126-31') 4 SPF
(11,137-49') 4 SPF

5 1/2" 17# P110 @ 12,220'
Cmt'd 1st Stage w/ 720 sks

PBTD: 12,082'
TD: 12,250'