

DISTRICT I
1625 N. French Dr., Hobbs, NM 88240
Phone: (575) 393-6161 Fax: (575) 393-0720

DISTRICT II
811 S. First St., Artesia, NM 88210
Phone: (575) 748-1283 Fax: (575) 748-9720

DISTRICT III
1000 Rio Brazos Road, Aztec, NM 87410
Phone: (505) 334-6178 Fax: (505) 334-6170

DISTRICT IV
1220 S. St. Francis Dr., Santa Fe, NM 87505
Phone: (505) 476-3460 Fax: (505) 476-3462

State of New Mexico
Energy, Minerals & Natural Resources Department
OIL CONSERVATION DIVISION
1220 South St. Francis Dr.
Santa Fe, New Mexico 87505

HOBBS OCD
MAY 07 2018
RECEIVED

Form C-102
Revised August 1, 2011
Submit one copy to appropriate
District Office

☐ AMENDED REPORT

WELL LOCATION AND ACREAGE DEDICATION PLAT

API Number 30-025-43874	Pool Code 97727	Pool Name WC-025 G-03 S173318N;Yeso
Property Code 317377	Property Name RAIDER 9 STATE	Well Number 2
OGRID No. 256512	Operator Name CML EXPLORATION, LLC	Elevation 4201'

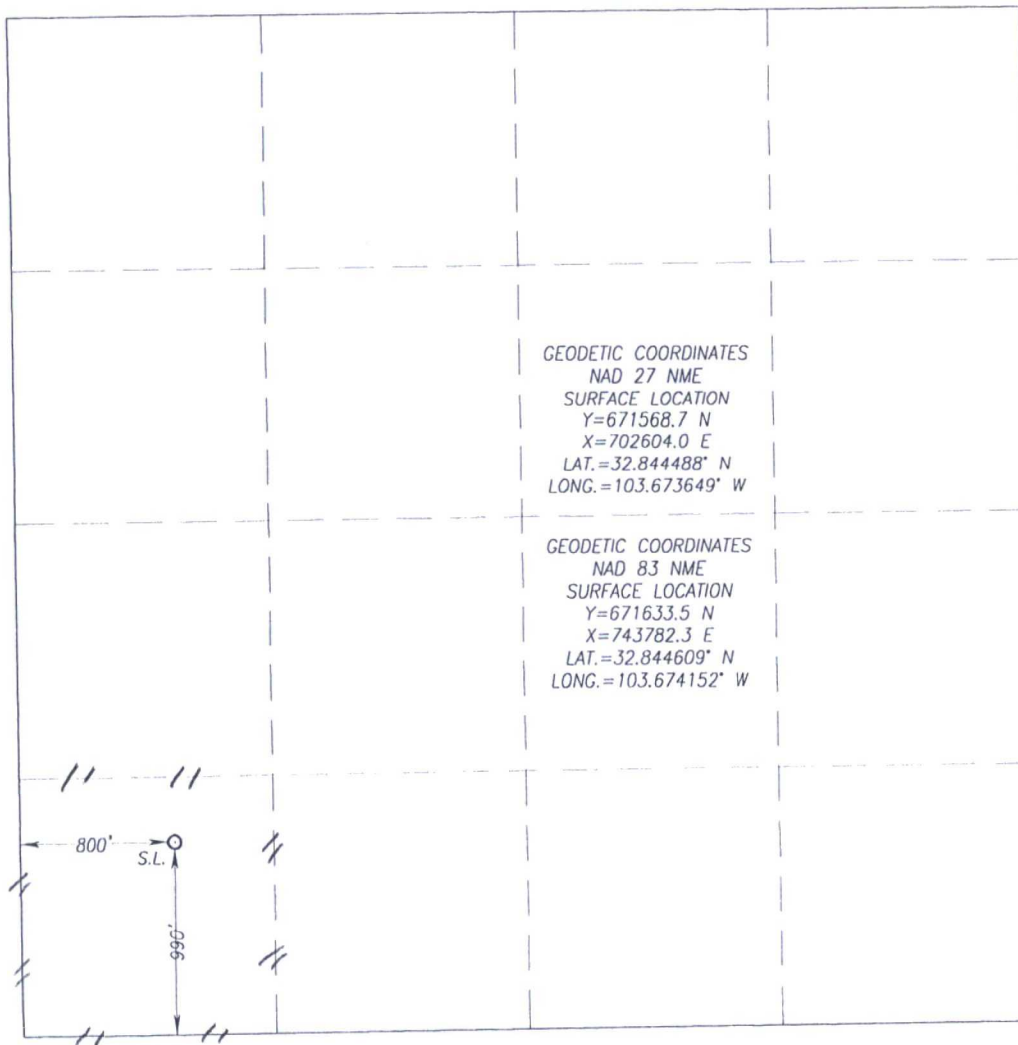
Surface Location

UL or lot No. M	Section 9	Township 17-S	Range 33-E	Lot Idn	Feet from the 990	North/South line SOUTH	Feet from the 800	East/West line WEST	County LEA
---------------------------	---------------------	-------------------------	----------------------	---------	-----------------------------	----------------------------------	-----------------------------	-------------------------------	----------------------

Bottom Hole Location If Different From Surface

UL or lot No.	Section	Township	Range	Lot Idn	Feet from the	North/South line	Feet from the	East/West line	County
Dedicated Acres 40	Joint or Infill	Consolidation Code	Order No.						

NO ALLOWABLE WILL BE ASSIGNED TO THIS COMPLETION UNTIL ALL INTERESTS HAVE BEEN CONSOLIDATED OR A NON-STANDARD UNIT HAS BEEN APPROVED BY THE DIVISION



OPERATOR CERTIFICATION

I hereby certify that the information herein is true and complete to the best of my knowledge and belief, and that this organization either owns a working interest or unleased mineral interest in the land including the proposed bottom hole location or has a right to drill this well at this location pursuant to a contract with an owner of such mineral or working interest, or to a voluntary pooling agreement or a compulsory pooling order heretofore entered by the division.

Jordan Owens 5/3/2018
Signature Date

Jordan Owens
Printed Name

owensj@cmlexp.com
E-mail Address

SURVEYOR CERTIFICATION

I hereby certify that the well location shown on this plat was plotted from field notes of special surveys made by me or under my supervision, and that the same is true and correct to the best of my belief.

Date of Survey
Signature & Seal of Professional Surveyor:

3239
REGISTERED PROFESSIONAL SURVEYOR

Ronald J. Eidson 06/16/2017
Certificate Number Gary G. Eidson 12641
Ronald J. Eidson 3239

ACK JWSC W.O.: 17.11.0558