

DISTRICT I
1625 N. French Dr., Hobbs, NM 88240
Phone (575) 393-8161 Fax: (575) 393-0720

DISTRICT II
811 S. First St., Artesia, NM 88210
Phone (505) 334-8178 Fax: (505) 334-8170

DISTRICT III
1000 Rio Brazos Rd., Aztec, NM 87410
Phone (505) 334-8178 Fax: (505) 334-8170

DISTRICT IV
1220 S. St. Francis Dr., Santa Fe, NM 87505
Phone (505) 476-3333 Fax: (505) 476-3462

State of New Mexico
Energy, Minerals and Natural Resources Department

OIL CONSERVATION DIVISION

1220 South St. Francis Dr.
Santa Fe, New Mexico 87505

Form C-102
Revised August 1, 2011

Submit one copy to appropriate
District Office

WELL LOCATION AND ACREAGE DEDICATION PLAT

☐ AMENDED REPORT

API Number 30-025-44770	Pool Code 27810	Pool Name GLADIOLA;SAN ANDRES
Property Code 321423	Property Name SARAH	Well Number 1H
OGRID No. 138008	Operator Name SPECIAL ENERGY CORPORATION	Elevation 3843'

Surface Location

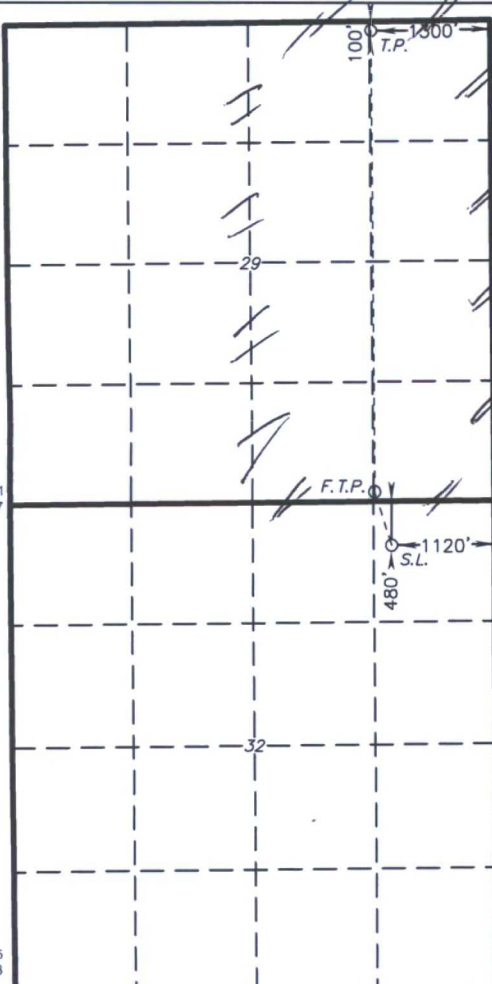
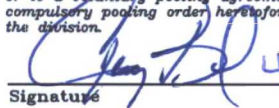

UL or lot No.	Section	Township	Range	Lot Idn	Feet from the	SOUTH/South line	Feet from the	East/West line	County
A	32	12 S	38 E		480	NORTH	1120	EAST	LEA

Bottom Hole Location If Different From Surface

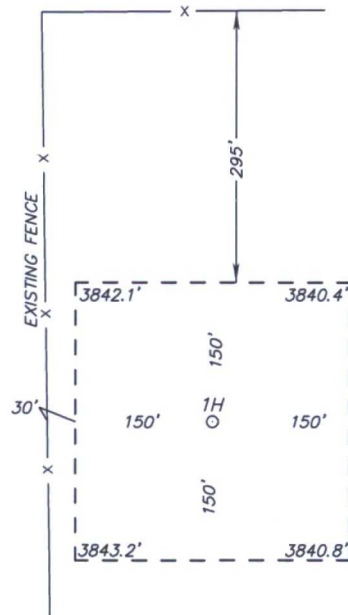
UL or lot No.	Section	Township	Range	Lot Idn	Feet from the	SOUTH/South line	Feet from the	East/West line	County
A	29	12 S	38 E		100	NORTH	1300	EAST	LEA

Dedicated Acres	Joint or Infill	Consolidation Code	Order No.
320	N	F	Pending

NO ALLOWABLE WILL BE ASSIGNED TO THIS COMPLETION UNTIL ALL INTERESTS HAVE BEEN CONSOLIDATED
OR A NON-STANDARD UNIT HAS BEEN APPROVED BY THE DIVISION

N: 823091.5 E: 909788.7 (NAD83)		N: 823158.8 E: 915062.9 (NAD83) TERMINUS POINT / BOTTOM HOLE Lat - N 33.256530 Long - W 103.115040 NMSPC- N 823042.2 E 913764.2 (NAD-83) FIRST TAKE POINT 100 FSL & 1300 FEL Lat - N 33.242740 Long - W 103.115062 NMSPC- N 818024.4 E 913816.0 (NAD-83) SURFACE LOCATION Lat - N 33.241147 Long - W 103.114476 NMSPC- N 817446.7 E 914001.9 (NAD-83)	OPERATOR CERTIFICATION I hereby certify that the information contained herein is true and complete to the best of my knowledge and belief, and that this organization either owns a working interest or unleased mineral interest in the land including the proposed bottom hole location or has a right to drill this well at this location pursuant to a contract with an owner of such a mineral or working interest, or to a voluntary pooling agreement or a compulsory pooling order heretofore entered by the division.  Signature Date Gary Bond, Vice President Printed Name gary.bond@specialenergycorp.com Email Address
N: 817877.1 E: 909858.7 (NAD83)		N: 817939.9 E: 915116.8 (NAD83) WELL LOCATION Lat - N 33.241147 Long - W 103.114476 NMSPC- N 817446.7 E 914001.9 (NAD-83)	SURVEYOR CERTIFICATION I hereby certify that the well location shown on this plat was plotted from field notes of actual surveys made by me or under my supervision, and that the same is true and correct to the best of my belief.  Date Surveyed Signature & Seal of Professional Surveyor Certificate No. Gary L. Jones 7977 BASIN SURVEYS Scale: 0' 500' 1000' 1500' 2000' SCALE: 1" = 1000' WO Num.: 33686
N: 812589.5 E: 909921.8 (NAD83)		N: 812653.3 E: 915171.6 (NAD83)	

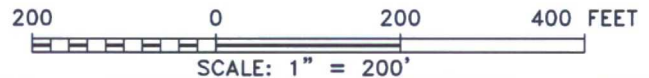
SECTION 32, TOWNSHIP 12 SOUTH, RANGE 38 EAST. N.M.P.M.,
LEA COUNTY, NEW MEXICO.



SPECIAL ENERGY CORPORATION
SARAH 1H
ELEV. - 3843'

Lat - N 33.241147
Long - W 103.114476
NMSPC- N 817446.7
E 914001.9
(NAD-83)

TATUM, NM IS ± 11 MILES TO THE WEST OF LOCATION.



SPECIAL ENERGY CORPORATION

REF: SARAH 1H / WELL PAD TOPO

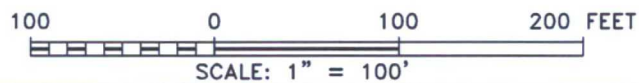
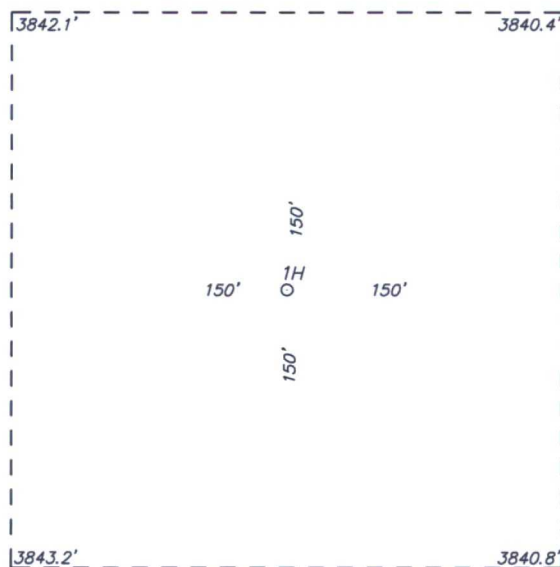
THE SARAH 1H LOCATED 480' FROM
THE NORTH LINE AND 1120' FROM THE EAST LINE OF
SECTION 32, TOWNSHIP 12 SOUTH, RANGE 38 EAST.
N.M.P.M., LEA COUNTY, NEW MEXICO.

basin
surveys
focused on excellence
in the oilfield

P.O. Box 1786
1120 N. West County Rd.
Hobbs, New Mexico 88241
(575) 393-7316 - Office
(575) 392-2206 - Fax
basinsurveys.com

W.O. Number: 33686	Drawn By: J GOAD	Date: 4-26-2018	Survey Date: 4-17-2018	Sheet 1 of 1 Sheets
--------------------	------------------	-----------------	------------------------	---------------------

SECTION 32, TOWNSHIP 12 SOUTH, RANGE 38 EAST. N.M.P.M.,
LEA COUNTY, NEW MEXICO.



SPECIAL ENERGY CORPORATION

REF: SARAH 1H / WELL PAD TOPO

THE SARAH 1H LOCATED 480' FROM
THE NORTH LINE AND 1120' FROM THE EAST LINE OF
SECTION 32, TOWNSHIP 12 SOUTH, RANGE 38 EAST.
N.M.P.M., LEA COUNTY, NEW MEXICO.



P.O. Box 1786
1120 N. West County Rd.
Hobbs, New Mexico 88241
(575) 393-7316 - Office
(575) 392-2206 - Fax
basinsurveys.com