

DISTRICT I

1625 N. French Dr., Hobbs, NM 88240
Phone: (575) 393-6161 Fax: (575) 393-0720

DISTRICT II

811 S. First St., Artesia, NM 88210
Phone: (575) 748-1283 Fax: (575) 748-0720

DISTRICT III

1000 Rio Brazos Rd., Aztec, NM 87410
Phone: (505) 334-6178 Fax: (505) 334-6170

DISTRICT IV

1220 S. St. Francis Dr., Santa Fe, NM 87505
Phone: (505) 476-3460 Fax: (505) 476-3462

State of New Mexico

Energy, Minerals & Natural Resources Department

OIL CONSERVATION DIVISION
1220 South St. Frances Dr.
Santa Fe, NM 87505

Form C-102

Revised August 1, 2011

Submit one copy to appropriate
District Office

☐ AMENDED REPORT

WELL LOCATION AND ACREAGE DEDICATION PLAT

API Number 20-025-44735	Pool Code 37580	Pool Name Lea; Bone Spring, South
Property Code 302802	Property Name LEA UNIT	Well Number 64H
GRID No. 240974	Operator Name LEGACY RESERVES OPERATING LP	Elevation 3689'

Surface Location

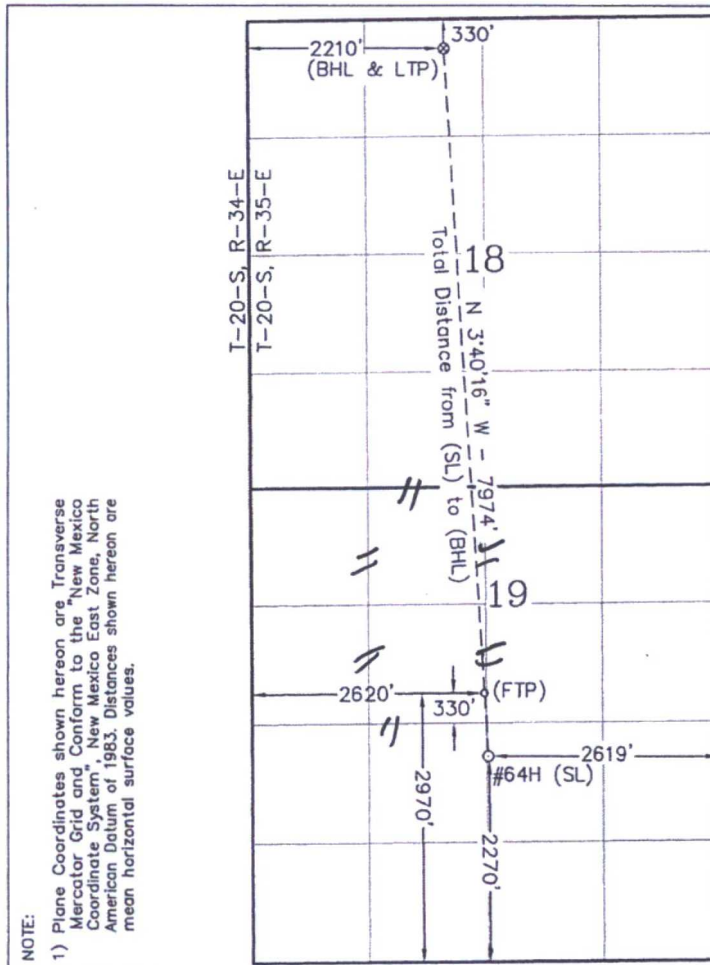
UL or lot No.	Section	Township	Range	Lot Idn	Feet from the	North/South line	Feet from the	East/West line	County
J	19	20 S	35 E		2270	SOUTH	2619	EAST	LEA

Bottom Hole Location If Different From Surface

UL or lot No.	Section	Township	Range	Lot Idn	Feet from the	North/South line	Feet from the	East/West line	County
C	18	20 S	35 E		330	NORTH	2210	WEST	LEA

Dedicated Acres 80 ac.	Joint or Infill	Consolidation Code	Order No.
----------------------------------	-----------------	--------------------	-----------

NO ALLOWABLE WILL BE ASSIGNED TO THIS COMPLETION UNTIL ALL INTERESTS HAVE BEEN CONSOLIDATED OR A NON-STANDARD UNIT HAS BEEN APPROVED BY THE DIVISION



BOTTOM HOLE
LOCATION &
LAST TAKE POINT
(NAD83)

Plane Coordinate
X = 798,645.7
Y = 575,559.6
Geodetic (D.D.)
32.5794910° N
103.49799087° W

FIRST TAKE POINT
(NAD83)

Plane Coordinate
X = 799,111.3
Y = 568,303.1
Geodetic (D.D.)
32.5595368° N
103.49666474° W

SURFACE LOCATION
(NAD83)

Plane Coordinate
X = 799,156.1
Y = 567,604.0
Geodetic (D.D.)
32.5576144° N
103.49653701° W

Scale
1" = 2000'

OPERATOR CERTIFICATION

I hereby certify that the information contained herein is true and complete to the best of my knowledge and belief, and that this organization either owns a working interest or undivided mineral interest in the land including the proposed bottom hole location or has a right to drill this well at this location pursuant to a contract with an owner of such a mineral or working interest, or to a voluntary pooling agreement or a compulsory pooling order heretofore entered by the division.

Sherry J Morrow 5/10/2018
Signature Date

Sherry J Morrow
Printed Name

smorrow@legacyp.com
E-mail Address

SURVEYOR CERTIFICATION

I hereby certify that the well location shown on this plat was plotted from field notes of actual surveys made by me or under my supervision, and that the same is true and correct to the best of my belief.

August 11, 2015

Date of Survey

Signature & Seal of Professional Surveyor

Lindsay Gygax
20150535
W.O. Num. 20150535
23263
NEW MEXICO
PROFESSIONAL SURVEYOR

Certificate No. Lindsay Gygax 23263