

District I
1625 N. French Dr., Hobbs, NM 88240
Phone: (575) 393-6161 Fax: (575) 393-0720
District II
811 S. First St., Artesia, NM 88210
Phone: (575) 748-1283 Fax: (575) 748-9720
District III
1000 Rio Brazos Road, Aztec, NM 87410
Phone: (505) 334-6178 Fax: (505) 334-6170
District IV
1220 S. St. Francis Dr., Santa Fe, NM 87505
Phone: (505) 476-3460 Fax: (505) 476-3462

State of New Mexico
Energy, Minerals & Natural Resources Department
OIL CONSERVATION DIVISION
1220 South St. Francis Dr.
Santa Fe, NM 87505

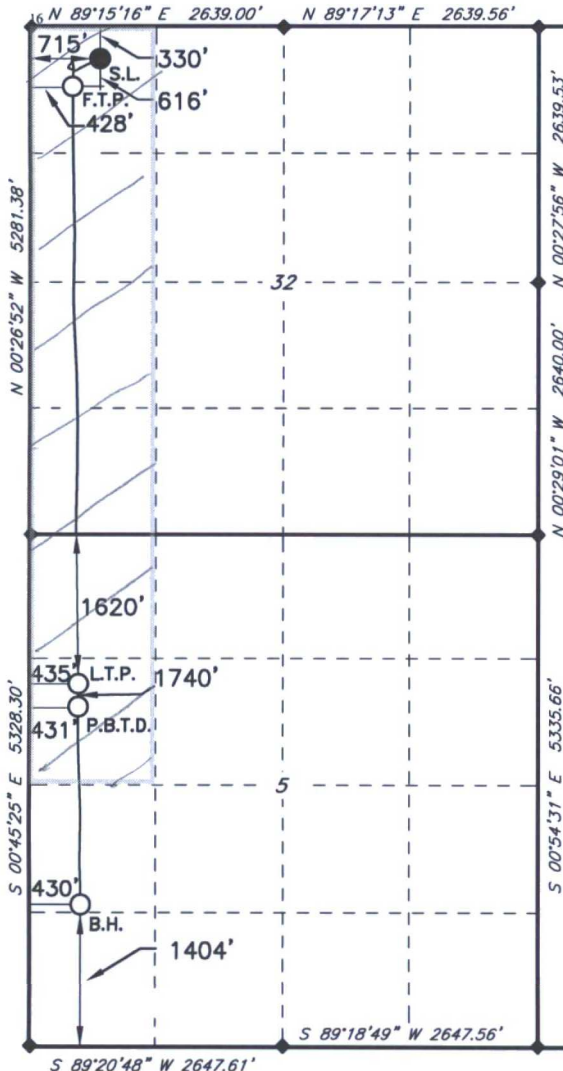
Form C-102
Revised August 1, 2011
Submit one copy to appropriate
District Office

☐ AMENDED REPORT

WELL LOCATION AND ACREAGE DEDICATION PLAT

¹ API Number 30-025-43626		² Pool Code 62305		³ Pool Name Vacuum; Upper Penn NW					
⁴ Property Code 317445		⁵ Property Name STATE LF 32-5						⁶ Well Number 2H	
⁷ OGRID NO. 215099		⁸ Operator Name CIMAREX ENERGY COMPANY						⁹ Elevation 4127'	
¹⁰ Surface Location									
UL or lot no. D	Section 32	Township 16S	Range 34E	Lot Idn	Feet from the 330	North/South line NORTH	Feet From the 715	East/West line WEST	County LEA
¹¹ Bottom Hole Location If Different From Surface									
UL or lot no. L	Section 5	Township 17S	Range 34E	Lot Idn	Feet from the 1404	North/South line SOUTH	Feet from the 430	East/West line WEST	County LEA
¹² Dedicated Acres 241.13		¹³ Joint or Infill		¹⁴ Consolidation Code		¹⁵ Order No.			

No allowable will be assigned to this completion until all interest have been consolidated or a non-standard unit has been approved by the division.



GEODETIC DATA
NAD 83 GRID - NM EAST

SURFACE LOCATION (S.L.)
N: 686425.5 - E: 769742.4
LAT: 32.88478940° N
LONG: 103.58929005° W
LAT: 32°53'05.2419" N
LONG: 103°35'21.4441" W

FIRST TAKE POINT (F.T.P.)
N: 686136.1 - E: 769457.9
LAT: 32.88399961° N
LONG: 103.59022332° W
LAT: 32°53'02.3986" N
LONG: 103°35'24.8040" W

LAST TAKE POINT (L.T.P.)
N: 679732.2 - E: 769520.4
LAT: 32.86639779° N
LONG: 103.59016662° W
LAT: 32°51'59.0320" N
LONG: 103°35'24.5998" W

PLUG BACK TO DEPTH (P.B.T.D.)
N: 679852.1 - E: 769522.0
LAT: 32.86672741° N
LONG: 103.59015861° W
LAT: 32°52'00.2187" N
LONG: 103°35'24.5710" W

BOTTOM HOLE (B.H.)
N: 677548.2 - E: 769548.1
LAT: 32.86039479° N
LONG: 103.59012640° W
LAT: 32°51'37.4212" N
LONG: 103°35'24.4550" W

- = SURFACE HOLE LOCATION
- = LOCATION AS NOTED
- ◆ = SECTION CORNER LOCATED

0 500 1,000 2,000 Feet

OPERATOR CERTIFICATION

I hereby certify that the information contained herein is true and complete to the best of my knowledge and belief, and that this organization either owns a working interest or unleased mineral interest in the land including the proposed bottom hole location or has a right to drill this well at this location pursuant to a contract with an owner of such a mineral or working interest, or to a voluntary pooling agreement or a compulsory pooling order heretofore entered by the division.

Amithy Crawford 3/26/18
Signature Date

Amithy Crawford
Printed Name

acrawford@cimarex.com
E-mail Address

¹⁸ SURVEYOR CERTIFICATION

I hereby certify that the well location shown on this plat was plotted from field notes of actual surveys made by me or under my supervision, and that the same is true and correct to the best of my belief.

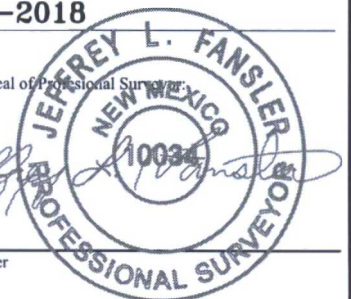
03-23-2018

Date of Survey

Signature and Seal of Professional Surveyor

10034

Certificate Number



Job No.: LS1701028AD