

# PECOS DISTRICT DRILLING CONDITIONS OF APPROVAL

<b>OPERATOR'S NAME:</b>	<b>Chisholm Energy Operating</b>
<b>LEASE NO.:</b>	<b>NM62924</b>
<b>WELL NAME &amp; NO.:</b>	<b>6H – Minis 1 Fed 3BS</b>
<b>SURFACE HOLE FOOTAGE:</b>	<b>150'/N &amp; 1398'/E</b>
<b>BOTTOM HOLE FOOTAGE:</b>	<b>330'/S &amp; 2160'/W</b>
<b>LOCATION:</b>	<b>Sec. 1, T. 21 S, R. 32 E</b>
<b>COUNTY:</b>	<b>Lea County, New Mexico</b>

HOBBS OCD  
MAY 21 2018  
(RECEIVED)

COA

H2S	<input type="radio"/> Yes	<input checked="" type="radio"/> No	
Potash	<input type="radio"/> None	<input type="radio"/> Secretary	<input checked="" type="radio"/> R-111-P
Cave/Karst Potential	<input checked="" type="radio"/> Low	<input type="radio"/> Medium	<input type="radio"/> High
Variance	<input type="radio"/> None	<input checked="" type="radio"/> Flex Hose	<input type="radio"/> Other
Wellhead	<input type="radio"/> Conventional	<input checked="" type="radio"/> Multibowl	<input type="radio"/> Both
Other	<input type="checkbox"/> 4 String Area	<input checked="" type="checkbox"/> Capitan Reef	<input type="checkbox"/> WIPP

## A. Hydrogen Sulfide

Hydrogen Sulfide (H2S) monitors shall be installed prior to drilling out the surface shoe. If H2S is detected in concentrations greater than 100 ppm, the Hydrogen Sulfide area shall meet Onshore Order 6 requirements, which includes equipment and personnel/public protection items. If Hydrogen Sulfide is encountered, provide measured values and formations to the BLM.

## B. CASING

1. The 13-3/8 inch surface casing shall be set at approximately **1500 feet** (a minimum of 25 feet into the Rustler Anhydrite and above the salt) and cemented to the surface.
  - a. If cement does not circulate to the surface, the appropriate BLM office shall be notified and a temperature survey utilizing an electronic type temperature survey with surface log readout will be used or a cement bond log shall be run to verify the top of the cement. Temperature survey will be run a minimum of six hours after pumping cement and ideally between 8-10 hours after completing the cement job.
  - b. Wait on cement (WOC) time for a primary cement job will be a minimum of **24 hours in the Potash Area** or 500 pounds compressive strength, whichever is greater. (This is to include the lead cement).

- c. Wait on cement (WOC) time for a remedial job will be a minimum of 4 hours after bringing cement to surface or 500 pounds compressive strength, whichever is greater.
- d. If cement falls back, remedial cementing will be done prior to drilling out that string.

**Operator shall filled 1/3<sup>rd</sup> casing with fluid while running intermediate casing to maintain collapse safety factor.**

2. The minimum required fill of cement behind the 9-5/8 inch intermediate casing is:  
**Wait on cement (WOC) time for a primary cement job is to include the lead cement slurry due to cave/karst or potash.**

Operator has proposed a DV tool, the depth may be adjusted as long as the cement is changed proportionally. The DV tool may be cancelled if cement circulates to surface on the first stage.

- a. First stage to DV tool: Cement to circulate. If cement does not circulate off the DV tool, contact the appropriate BLM office before proceeding with second stage cement job.
- b. Second stage above DV tool: Cement to surface. If cement does not circulate, contact the appropriate BLM office.

❖ **Special Capitan Reef requirements.** If lost circulation (50% or greater) occurs below the Base of the Salt, the operator shall do the following:

**(Use this for 3 string wells in the Capitan Reef, if 4 string well ensure FW based mud used across the capitan interval)**

- Switch to fresh water mud to protect the Capitan Reef and use fresh water mud until setting the intermediate casing. The appropriate BLM office is to be notified for a PET to witness the switch to fresh water.
- Daily drilling reports from the Base of the Salt to the setting of the intermediate casing are to be submitted to the BLM CFO engineering staff via e-mail by 0800 hours each morning. Any lost circulation encountered is to be recorded on these drilling reports. The daily drilling report should show mud volume per shift/tour. Failure to submit these reports will result in an Incidence of Non-Compliance being issued for failure to comply with the Conditions of Approval. If not already planned, the operator shall run a caliper survey for the intermediate well bore and submit to the appropriate BLM office.

**Production lead cement is a Class H.**

- 3. The minimum required fill of cement behind the 5-1/2 inch production casing is:
  - Cement to surface. If cement does not circulate, contact the appropriate BLM office.



## C. PRESSURE CONTROL

1. Variance approved to use flex line from BOP to choke manifold. Manufacturer's specification to be readily available. No external damage to flex line. Flex line to be installed as straight as possible (no hard bends).
2. Minimum working pressure of the blowout preventer (BOP) and related equipment (BOPE) required for drilling below the surface casing shoe shall be **5000 (5M)** psi.

## GENERAL REQUIREMENTS

The BLM is to be notified in advance for a representative to witness:

- a. Spudding well (minimum of 24 hours)
- b. Setting and/or Cementing of all casing strings (minimum of 4 hours)
- c. BOPE tests (minimum of 4 hours)

☒ Chaves and Roosevelt Counties  
Call the Roswell Field Office, 2909 West Second St., Roswell NM 88201.  
During office hours call (575) 627-0272.  
After office hours call (575)

☒ Eddy County  
Call the Carlsbad Field Office, 620 East Greene St., Carlsbad, NM 88220,  
(575) 361-2822

☒ Lea County  
Call the Hobbs Field Station, 414 West Taylor, Hobbs NM 88240, (575)  
393-3612

1. Unless the production casing has been run and cemented or the well has been properly plugged, the drilling rig shall not be removed from over the hole without prior approval.
  - a. In the event the operator has proposed to drill multiple wells utilizing a skid/walking rig. Operator shall secure the wellbore on the current well, after installing and testing the wellhead, by installing a blind flange of like pressure rating to the wellhead and a pressure gauge that can be monitored while drilling is performed on the other well(s).
  - b. When the operator proposes to set surface casing with Spudder Rig
    - Notify the BLM when moving in and removing the Spudder Rig.
    - Notify the BLM when moving in the 2<sup>nd</sup> Rig. Rig to be moved in within 90 days of notification that Spudder Rig has left the location.
    - BOP/BOPE test to be conducted per Onshore Oil and Gas Order No. 2 as soon as 2nd Rig is rigged up on well.
2. Floor controls are required for 3M or Greater systems. These controls will be on the rig floor, unobstructed, readily accessible to the driller and will be operational at all

times during drilling and/or completion activities. Rig floor is defined as the area immediately around the rotary table; the area immediately above the substructure on which the draw works are located, this does not include the dog house or stairway area.

3. The record of the drilling rate along with the GR/N well log run from TD to surface (horizontal well – vertical portion of hole) shall be submitted to the BLM office as well as all other logs run on the borehole 30 days from completion. If available, a digital copy of the logs is to be submitted in addition to the paper copies. The Rustler top and top and bottom of Salt are to be recorded on the Completion Report.

#### A. CASING

1. Changes to the approved APD casing program need prior approval if the items substituted are of lesser grade or different casing size or are Non-API. The Operator can exchange the components of the proposal with that of superior strength (i.e. changing from J-55 to N-80, or from 36# to 40#). Changes to the approved cement program need prior approval if the altered cement plan has less volume or strength or if the changes are substantial (i.e. Multistage tool, ECP, etc.). The initial wellhead installed on the well will remain on the well with spools used as needed.
2. Wait on cement (WOC) for Potash Areas: After cementing but before commencing any tests, the casing string shall stand cemented under pressure until both of the following conditions have been met: 1) cement reaches a minimum compressive strength of 500 psi for all cement blends, 2) until cement has been in place at least 24 hours. WOC time will be recorded in the driller's log. The casing integrity test can be done (prior to the cement setting up) immediately after bumping the plug.
3. Wait on cement (WOC) for Water Basin: After cementing but before commencing any tests, the casing string shall stand cemented under pressure until both of the following conditions have been met: 1) cement reaches a minimum compressive strength of 500 psi at the shoe, 2) until cement has been in place at least 8 hours. WOC time will be recorded in the driller's log. See individual casing strings for details regarding lead cement slurry requirements. The casing integrity test can be done (prior to the cement setting up) immediately after bumping the plug.
4. Provide compressive strengths including hours to reach required 500 pounds compressive strength prior to cementing each casing string. Have well specific cement details onsite prior to pumping the cement for each casing string.
5. No pea gravel permitted for remedial or fall back remedial without prior authorization from the BLM engineer.
6. On that portion of any well approved for a 5M BOPE system or greater, a pressure integrity test of each casing shoe shall be performed. Formation at the shoe shall be



tested to a minimum of the mud weight equivalent anticipated to control the formation pressure to the next casing depth or at total depth of the well. This test shall be performed before drilling more than 20 feet of new hole.

7. If hardband drill pipe is rotated inside casing, returns will be monitored for metal. If metal is found in samples, drill pipe will be pulled and rubber protectors which have a larger diameter than the tool joints of the drill pipe will be installed prior to continuing drilling operations.
8. Whenever a casing string is cemented in the R-111-P potash area, the NMOCD requirements shall be followed.

#### B. PRESSURE CONTROL

1. All blowout preventer (BOP) and related equipment (BOPE) shall comply with well control requirements as described in Onshore Oil and Gas Order No. 2 and API RP 53 Sec. 17.
2. If a variance is approved for a flexible hose to be installed from the BOP to the choke manifold, the following requirements apply: The flex line must meet the requirements of API 16C. Check condition of flexible line from BOP to choke manifold, replace if exterior is damaged or if line fails test. Line to be as straight as possible with no hard bends and is to be anchored according to Manufacturer's requirements. The flexible hose can be exchanged with a hose of equal size and equal or greater pressure rating. Anchor requirements, specification sheet and hydrostatic pressure test certification matching the hose in service, to be onsite for review. These documents shall be posted in the company man's trailer and on the rig floor.
3. 5M or higher system requires an HCR valve, remote kill line and annular to match. The remote kill line is to be installed prior to testing the system and tested to stack pressure.
4. **If the operator has proposed a multi-bowl wellhead assembly in the APD. The following requirements must be met:**
  - a. Wellhead shall be installed by manufacturer's representatives, submit documentation with subsequent sundry.
  - b. If the welding is performed by a third party, the manufacturer's representative shall monitor the temperature to verify that it does not exceed the maximum temperature of the seal.
  - c. Manufacturer representative shall install the test plug for the initial BOP test.
  - d. If the cement does not circulate and one inch operations would have been possible with a standard wellhead, the well head shall be cut off, cementing operations performed and another wellhead installed.
  - e. Whenever any seal subject to test pressure is broken, all the tests in OOGO2.III.A.2.i must be followed.

5. The appropriate BLM office shall be notified a minimum of 4 hours in advance for a representative to witness the tests.
- a. In a water basin, for all casing strings utilizing slips, these are to be set as soon as the crew and rig are ready and any fallback cement remediation has been done. The casing cut-off and BOP installation can be initiated four hours after installing the slips, which will be approximately six hours after bumping the plug. For those casing strings not using slips, the minimum wait time before cut-off is eight hours after bumping the plug. BOP/BOPE testing can begin after cut-off or once cement reaches 500 psi compressive strength (including lead when specified), whichever is greater. However, if the float does not hold, cut-off cannot be initiated until cement reaches 500 psi compressive strength (including lead when specified).
  - b. In potash areas, for all casing strings utilizing slips, these are to be set as soon as the crew and rig are ready and any fallback cement remediation has been done. For all casing strings, casing cut-off and BOP installation can be initiated at twelve hours after bumping the plug. However, **no tests** shall commence until the cement has had a minimum of 24 hours setup time, except the casing pressure test can be initiated immediately after bumping the plug (only applies to single stage cement jobs).
  - c. The tests shall be done by an independent service company utilizing a test plug. The results of the test shall be reported to the appropriate BLM office.
  - d. The test shall be run on a 5000 psi chart for a 2-3M BOP/BOP, on a 10000 psi chart for a 5M BOP/BOPE and on a 15000 psi chart for a 10M BOP/BOPE. If a linear chart is used, it shall be a one hour chart. A circular chart shall have a maximum 2 hour clock. If a twelve hour or twenty-four hour chart is used, tester shall make a notation that it is run with a two hour clock.
  - e. All tests are required to be recorded on a calibrated test chart. A copy of the BOP/BOPE test chart and a copy of independent service company test will be submitted to the appropriate BLM office.
  - f. The BOP/BOPE test shall include a low pressure test from 250 to 300 psi. The test will be held for a minimum of 10 minutes. This test shall be performed prior to the test at full stack pressure.
  - g. BOP/BOPE must be tested by an independent service company within 500 feet of the top of the Wolfcamp formation if the time between the setting of the intermediate casing and reaching this depth exceeds 20 days. This test does not exclude the test prior to drilling out the casing shoe as per Onshore Order No. 2.



### C. DRILLING MUD

Mud system monitoring equipment, with derrick floor indicators and visual and audio alarms, shall be operating before drilling into the Wolfcamp formation, and shall be used until production casing is run and cemented.

### D. WASTE MATERIAL AND FLUIDS

All waste (i.e. drilling fluids, trash, salts, chemicals, sewage, gray water, etc.) created as a result of drilling operations and completion operations shall be safely contained and disposed of properly at a waste disposal facility. No waste material or fluid shall be disposed of on the well location or surrounding area.

Porto-johns and trash containers will be on-location during fracturing operations or any other crew-intensive operations.

#### **Waste Minimization Plan (WMP)**

In the interest of resource development, submission of additional well gas capture development plan information is deferred but may be required by the BLM Authorized Officer at a later date.

**ZS 040118**

District I  
1625 N. French Dr., Hobbs, NM 88240  
District II  
811 S. First St., Artesia, NM 88210  
District III  
1000 Rio Brazos Road, Aztec, NM 87410  
District IV  
1220 S. St. Francis Dr., Santa Fe, NM 87505

State of New Mexico  
Energy, Minerals and Natural Resources Department  
Oil Conservation Division  
1220 South St. Francis Dr.  
Santa Fe, NM 87505

Submit Original  
to Appropriate  
District Office

HOBBSOCD  
MAY 21 2018

## GAS CAPTURE PLAN

Date: 03/29/2018

☒ Original

Operator & OGRID No.: Chisholm Energy Operating, LLC/372137

☐ Amended - Reason for Amendment:

This Gas Capture Plan outlines actions to be taken by the Operator to reduce well/production facility flaring/venting for new completion (new drill, recomple to new zone, re-frac) activity.

*Note: Form C-129 must be submitted and approved prior to exceeding 60 days allowed by Rule (Subsection A of 19.15.18.12 NMAC).*

### Well(s)/Production Facility – Name of facility

The well(s) that will be located at the production facility are shown in the table below.

Well Name	API	Well Location (ULSTR)	Footages	Expected MCF/D	Flared or Vented	Comments
MINIS 1 FED COM 3BS 7H	025-	LOT 2-1-21S-32E	150 FNL 1398 FEL	900	FLARED	PIPELINE IN PLACE; FLARE ONLY WHEN NEEDED

### Gathering System and Pipeline Notification

Well(s) will be connected to a production facility after flowback operations are complete, if gas transporter system is in place. The gas produced from production facility is dedicated to DCP Midstream and will be connected to DCP Midstream low/high pressure gathering system located in LEA County, New Mexico. It will require FLOWLINES to connect the facility to low/high pressure gathering system. Chisholm Energy Operating, LLC provides (periodically) to DCP Midstream a drilling, completion and estimated first production date for wells that are scheduled to be drilled in the foreseeable future. In addition, Chisholm Energy Operating, LLC and DCP Midstream have periodic conference calls to discuss changes to drilling and completion schedules. Gas from these wells will be processed at DCP Midstream Processing Plant located in Sec. 20, Twn. 19S, Rng. 32E, Lea County, New Mexico. The actual flow of the gas will be based on compression operating parameters and gathering system pressures.

### Flowback Strategy

After the fracture treatment/completion operations, well(s) will be produced to temporary production tanks and gas will be flared or vented. During flowback, the fluids and sand content will be monitored. When the produced fluids contain minimal sand, the wells will be turned to production facilities. Gas sales should start as soon as the wells start flowing through the production facilities, unless there are operational issues on DCP Midstream system at that time. Based on current information, it is Chisholm Energy Operating, LLC belief the system can take this gas upon completion of the well(s).

Safety requirements during cleanout operations from the use of underbalanced air cleanout systems may necessitate that sand and non-pipeline quality gas be vented and/or flared rather than sold on a temporary basis.

### Alternatives to Reduce Flaring

Below are alternatives considered from a conceptual standpoint to reduce the amount of gas flared.

- Power Generation – On lease
  - Only a portion of gas is consumed operating the generator, remainder of gas will be flared
- Compressed Natural Gas – On lease
  - Gas flared would be minimal, but might be uneconomical to operate when gas volume declines
- NGL Removal – On lease
  - Plants are expensive, residue gas is still flared, and uneconomical to operate when gas volume declines



# PECOS DISTRICT SURFACE USE CONDITIONS OF APPROVAL

OPERATOR'S NAME:	Chisholm Energy Operating
LEASE NO.:	NM62924
WELL NAME & NO.:	6H-Minis 1 Fed 3BS
SURFACE HOLE FOOTAGE:	150'/N & 1398'/E
BOTTOM HOLE FOOTAGE:	330'/S & 2160'/E
LOCATION:	Section 1, T. 21 S., R. 32 E.
COUNTY:	Lea County, New Mexico

## TABLE OF CONTENTS

Standard Conditions of Approval (COA) apply to this APD. If any deviations to these standards exist or special COAs are required, the section with the deviation or requirement will be checked below.

- ☐ **General Provisions**
- ☐ **Permit Expiration**
- ☐ **Archaeology, Paleontology, and Historical Sites**
- ☐ **Noxious Weeds**
- ☐ **Special Requirements**
  - Watershed
  - Lesser Prairie-Chicken Timing Stipulations
  - Ground-level Abandoned Well Marker
  - Potash
- ☐ **Construction**
  - Notification
  - Topsoil
  - Closed Loop System
  - Federal Mineral Material Pits
  - Well Pads
  - Roads
- ☐ **Road Section Diagram**
- ☐ **Production (Post Drilling)**
  - Well Structures & Facilities
- ☐ **Interim Reclamation**
- ☐ **Final Abandonment & Reclamation**

## **I. GENERAL PROVISIONS**

The approval of the Application For Permit To Drill (APD) is in compliance with all applicable laws and regulations: 43 Code of Federal Regulations 3160, the lease terms, Onshore Oil and Gas Orders, Notices To Lessees, New Mexico Oil Conservation Division (NMOCD) Rules, National Historical Preservation Act As Amended, and instructions and orders of the Authorized Officer. Any request for a variance shall be submitted to the Authorized Officer on Form 3160-5, Sundry Notices and Report on Wells.

## **II. PERMIT EXPIRATION**

If the permit terminates prior to drilling and drilling cannot be commenced within 60 days after expiration, an operator is required to submit Form 3160-5, Sundry Notices and Reports on Wells, requesting surface reclamation requirements for any surface disturbance. However, if the operator will be able to initiate drilling within 60 days after the expiration of the permit, the operator must have set the conductor pipe in order to allow for an extension of 60 days beyond the expiration date of the APD. (Filing of a Sundry Notice is required for this 60 day extension.)

## **III. ARCHAEOLOGICAL, PALEONTOLOGY & HISTORICAL SITES**

Any cultural and/or paleontological resource discovered by the operator or by any person working on the operator's behalf shall immediately report such findings to the Authorized Officer. The operator is fully accountable for the actions of their contractors and subcontractors. The operator shall suspend all operations in the immediate area of such discovery until written authorization to proceed is issued by the Authorized Officer. An evaluation of the discovery shall be made by the Authorized Officer to determine the appropriate actions that shall be required to prevent the loss of significant cultural or scientific values of the discovery. The operator shall be held responsible for the cost of the proper mitigation measures that the Authorized Officer assesses after consultation with the operator on the evaluation and decisions of the discovery. Any unauthorized collection or disturbance of cultural or paleontological resources may result in a shutdown order by the Authorized Officer.

## **IV. NOXIOUS WEEDS**

The operator shall be held responsible if noxious weeds become established within the areas of operations. Weed control shall be required on the disturbed land where noxious weeds exist, which includes the roads, pads, associated pipeline corridor, and adjacent land affected by the establishment of weeds due to this action. The operator shall consult with the Authorized Officer for



acceptable weed control methods, which include following EPA and BLM requirements and policies.

## **V. SPECIAL REQUIREMENT(S)**

### **Watershed**

The entire well pad will be bermed to prevent oil, salt, and other chemical contaminants from leaving the well pad. Topsoil shall not be used to construct the berm. No water flow from the uphill side(s) of the pad shall be allowed to enter the well pad. The berm shall be maintained through the life of the well and after interim reclamation has been completed.

Any water erosion that may occur due to the construction of the well pad during the life of the well will be quickly corrected and proper measures will be taken to prevent future erosion. Stockpiling of topsoil is required. The top soil shall be stockpiled in an appropriate location to prevent loss of soil due to water or wind erosion and not used for berming or erosion control.

### **Timing Limitation Stipulation / Condition of Approval for lesser prairie-chicken:**

Oil and gas activities including 3-D geophysical exploration, and drilling will not be allowed in lesser prairie-chicken habitat during the period from March 1st through June 15th annually. During that period, other activities that produce noise or involve human activity, such as the maintenance of oil and gas facilities, pipeline, road, and well pad construction, will be allowed except between 3:00 am and 9:00 am. The 3:00 am to 9:00 am restriction will not apply to normal, around-the-clock operations, such as venting, flaring, or pumping, which do not require a human presence during this period. Additionally, no new drilling will be allowed within up to 200 meters of leks known at the time of permitting. Normal vehicle use on existing roads will not be restricted. Exhaust noise from pump jack engines must be muffled or otherwise controlled so as not to exceed 75 db measured at 30 feet from the source of the noise.

**Ground-level Abandoned Well Marker to avoid raptor perching:** Upon the plugging and subsequent abandonment of the well, the well marker will be installed at ground level on a plate containing the pertinent information for the plugged well. For more installation details, contact the Carlsbad Field Office at 575-234-5972.

This authorization is subject to your Certificate of Participation and/or Certificate of Inclusion under the New Mexico Candidate Conservation Agreement. Because it involves surface disturbing activities covered under your Certificate, your Habitat Conservation Fund Account with the Center of Excellence for Hazardous Materials Management (CEHMM) will be debited according to Exhibit B Part 2 of the Certificate of Participation.

**Potash-** See Potash Memo

## **VI. CONSTRUCTION**

### **A. NOTIFICATION**

The BLM shall administer compliance and monitor construction of the access road and well pad. Notify the at least 3 working days prior to commencing construction of the access road and/or well pad.

When construction operations are being conducted on this well, the operator shall have the approved APD and Conditions of Approval (COA) on the well site and they shall be made available upon request by the Authorized Officer.

### **B. TOPSOIL**

The operator shall strip the top portion of the soil (root zone) from the entire well pad area and stockpile the topsoil along the edge of the well pad as depicted in the APD. The root zone is typically six (6) inches in depth. All the stockpiled topsoil will be redistributed over the interim reclamation areas. Topsoil shall not be used for berming the pad or facilities. For final reclamation, the topsoil shall be spread over the entire pad area for seeding preparation.

Other subsoil (below six inches) stockpiles must be completely segregated from the topsoil stockpile. Large rocks or subsoil clods (not evident in the surrounding terrain) must be buried within the approved area for interim and final reclamation.

### **C. CLOSED LOOP SYSTEM**

Tanks are required for drilling operations: No Pits.

The operator shall properly dispose of drilling contents at an authorized disposal site.

### **D. FEDERAL MINERAL MATERIALS PIT**

Payment shall be made to the BLM prior to removal of any federal mineral materials. Call the .

### **E. WELL PAD SURFACING**

Surfacing of the well pad is not required.

If the operator elects to surface the well pad, the surfacing material may be required to be removed at the time of reclamation. The well pad shall be constructed in a manner which creates the smallest possible surface disturbance, consistent with safety and operational needs.

### **F. EXCLOSURE FENCING (CELLARS & PITS)**



**Exclosure Fencing**

The operator will install and maintain exclosure fencing for all open well cellars to prevent access to public, livestock, and large forms of wildlife before and after drilling operations until the pit is free of fluids and the operator initiates backfilling. (For examples of exclosure fencing design, refer to BLM's Oil and Gas Gold Book, Exclosure Fence Illustrations, Figure 1, Page 18.)

**G. ON LEASE ACCESS ROADS****Road Width**

The access road shall have a driving surface that creates the smallest possible surface disturbance and does not exceed fourteen (14) feet in width. The maximum width of surface disturbance, when constructing the access road, shall not exceed twenty-five (25) feet.

**Surfacing**

Surfacing material is not required on the new access road driving surface. If the operator elects to surface the new access road or pad, the surfacing material may be required to be removed at the time of reclamation.

Where possible, no improvements should be made on the unsurfaced access road other than to remove vegetation as necessary, road irregularities, safety issues, or to fill low areas that may sustain standing water.

The Authorized Officer reserves the right to require surfacing of any portion of the access road at any time deemed necessary. Surfacing may be required in the event the road deteriorates, erodes, road traffic increases, or it is determined to be beneficial for future field development. The surfacing depth and type of material will be determined at the time of notification.

**Crowning**

Crowning shall be done on the access road driving surface. The road crown shall have a grade of approximately 2% (i.e., a 1" crown on a 14' wide road). The road shall conform to Figure 1; cross section and plans for typical road construction.

**Ditching**

Ditching shall be required on both sides of the road.

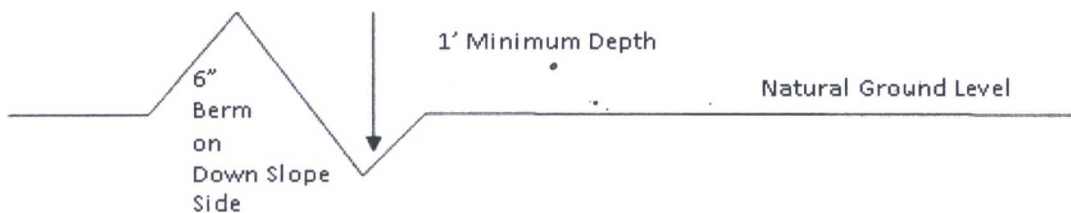
**Turnouts**

Vehicle turnouts shall be constructed on the road. Turnouts shall be intervisible with interval spacing distance less than 1000 feet. Turnouts shall conform to Figure 1; cross section and plans for typical road construction.

**Drainage**

Drainage control systems shall be constructed on the entire length of road (e.g. ditches, sidehill out sloping and insloping, leadoff ditches, culvert installation, and low water crossings).

A typical lead-off ditch has a minimum depth of 1 foot below and a berm of 6 inches above natural ground level. The berm shall be on the down-slope side of the lead-off ditch.



All lead-off ditches shall be graded to drain water with a 1 percent minimum to 3 percent maximum ditch slope. The spacing interval are variable for lead-off ditches and shall be determined according to the formula for spacing intervals of lead-off ditches, but may be amended depending upon existing soil types and centerline road slope (in %);

### **Cattle guards**

An appropriately sized cattle guard sufficient to carry out the project shall be installed and maintained at fence/road crossings. Any existing cattle guards on the access road route shall be repaired or replaced if they are damaged or have deteriorated beyond practical use. The operator shall be responsible for the condition of the existing cattle guards that are in place and are utilized during lease operations.

### **Fence Requirement**

Where entry is granted across a fence line, the fence shall be braced and tied off on both sides of the passageway prior to cutting. The operator shall notify the private surface landowner or the grazing allotment holder prior to crossing any fences.

### **Public Access**

Public access on this road shall not be restricted by the operator without specific written approval granted by the Authorized Officer.



### Construction Steps

1. Salvage topsoil
2. Construct road

3. Redistribute topsoil
4. Revegetate slopes

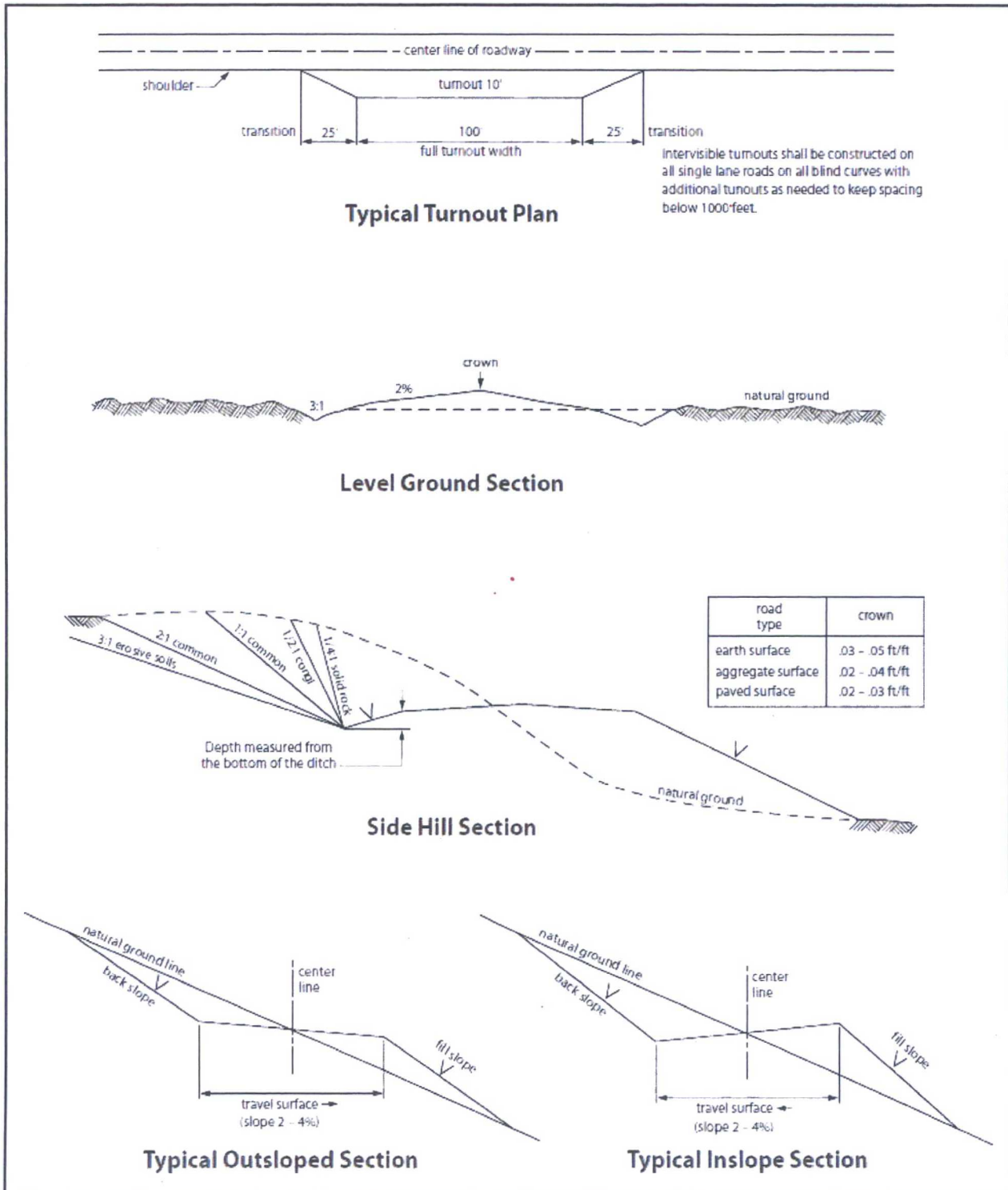


Figure 1. Cross-sections and plans for typical road sections representative of BLM resource or FS local and higher-class roads.

## **VII. PRODUCTION (POST DRILLING)**

### **A. WELL STRUCTURES & FACILITIES**

#### **Placement of Production Facilities**

Production facilities should be placed on the well pad to allow for maximum interim recontouring and revegetation of the well location.

#### **Exclosure Netting (Open-top Tanks)**

Immediately following active drilling or completion operations, the operator will take actions necessary to prevent wildlife and livestock access, including avian wildlife, to all open-topped tanks that contain or have the potential to contain salinity sufficient to cause harm to wildlife or livestock, hydrocarbons, or Resource Conservation and Recovery Act of 1976-exempt hazardous substances. At a minimum, the operator will net, screen, or cover open-topped tanks to exclude wildlife and livestock and prevent mortality. If the operator uses netting, the operator will cover and secure the open portion of the tank to prevent wildlife entry. The operator will net, screen, or cover the tanks until the operator removes the tanks from the location or the tanks no longer contain substances that could be harmful to wildlife or livestock. Use a maximum netting mesh size of 1 ½ inches. The netting must not be in contact with fluids and must not have holes or gaps.

#### **Chemical and Fuel Secondary Containment and Exclosure Screening**

The operator will prevent all hazardous, poisonous, flammable, and toxic substances from coming into contact with soil and water. At a minimum, the operator will install and maintain an impervious secondary containment system for any tank or barrel containing hazardous, poisonous, flammable, or toxic substances sufficient to contain the contents of the tank or barrel and any drips, leaks, and anticipated precipitation. The operator will dispose of fluids within the containment system that do not meet applicable state or U. S. Environmental Protection Agency livestock water standards in accordance with state law; the operator must not drain the fluids to the soil or ground. The operator will design, construct, and maintain all secondary containment systems to prevent wildlife and livestock exposure to harmful substances. At a minimum, the operator will install effective wildlife and livestock exclosure systems such as fencing, netting, expanded metal mesh, lids, and grate covers. Use a maximum netting mesh size of 1 ½ inches.

#### **Open-Vent Exhaust Stack Exclosures**

The operator will construct, modify, equip, and maintain all open-vent exhaust stacks on production equipment to prevent birds and bats from entering, and to discourage perching, roosting, and nesting. (*Recommended exclosure structures on open-vent exhaust stacks are in the shape of a cone.*) Production equipment includes, but may not be limited to, tanks, heater-treaters, separators, dehydrators, flare stacks, in-line units, and compressor mufflers.



### **Containment Structures**

Proposed production facilities such as storage tanks and other vessels will have a secondary containment structure that is constructed to hold the capacity of 1.5 times the largest tank, plus freeboard to account for precipitation, unless more stringent protective requirements are deemed necessary.

### **Painting Requirement**

All above-ground structures including meter housing that are not subject to safety requirements shall be painted a flat non-reflective paint color, **Shale Green** from the BLM Standard Environmental Color Chart (CC-001: June 2008).

## **VIII. INTERIM RECLAMATION**

During the life of the development, all disturbed areas not needed for active support of production operations should undergo interim reclamation in order to minimize the environmental impacts of development on other resources and uses.

Within six (6) months of well completion, operators should work with BLM surface management specialists (Jim Amos: 575-234-5909) to devise the best strategies to reduce the size of the location. Interim reclamation should allow for remedial well operations, as well as safe and efficient removal of oil and gas.

During reclamation, the removal of caliche is important to increasing the success of revegetating the site. Removed caliche that is free of contaminants may be used for road repairs, fire walls or for building other roads and locations. In order to operate the well or complete workover operations, it may be necessary to drive, park and operate on restored interim vegetation within the previously disturbed area. Disturbing revegetated areas for production or workover operations will be allowed. If there is significant disturbance and loss of vegetation, the area will need to be revegetated. Communicate with the appropriate BLM office for any exceptions/exemptions if needed.

All disturbed areas after they have been satisfactorily prepared need to be reseeded with the seed mixture provided below.

Upon completion of interim reclamation, the operator shall submit a Sundry Notices and Reports on Wells, Subsequent Report of Reclamation (Form 3160-5).

## **IX. FINAL ABANDONMENT & RECLAMATION**

At final abandonment, well locations, production facilities, and access roads must undergo "final" reclamation so that the character and productivity of the land are restored.

Earthwork for final reclamation must be completed within six (6) months of well plugging. All pads, pits, facility locations and roads must be reclaimed to a satisfactory revegetated, safe, and stable condition, unless an agreement is made with the landowner or BLM to keep the road and/or pad intact.

After all disturbed areas have been satisfactorily prepared, these areas need to be revegetated with the seed mixture provided below. Seeding should be accomplished by drilling on the contour whenever practical or by other approved methods. Seeding may need to be repeated until revegetation is successful, as determined by the BLM.

Operators shall contact a BLM surface protection specialist prior to surface abandonment operations for site specific objectives (Jim Amos: 575-234-5909).

Ground-level Abandoned Well Marker to avoid raptor perching: Upon the plugging and subsequent abandonment of the well, the well marker will be installed at ground level on a plate containing the pertinent information for the plugged well.

#### **Seed Mixture for LPC Sand/Shinnery Sites**



Holder shall seed all disturbed areas with the seed mixture listed below. The seed mixture shall be planted in the amounts specified in pounds of pure live seed (PLS)\* per acre. There shall be no primary or secondary noxious weeds in the seed mixture. Seed will be tested and the viability testing of seed shall be done in accordance with State law(s) and within nine (9) months prior to purchase. Commercial seed shall be either certified or registered seed. The seed container shall be tagged in accordance with State law(s) and available for inspection by the Authorized Officer.

Seed will be planted using a drill equipped with a depth regulator to ensure proper depth of planting where drilling is possible. The seed mixture will be evenly and uniformly planted over the disturbed area (smaller/heavier seeds have a tendency to drop the bottom of the drill and are planted first). Holder shall take appropriate measures to ensure this does not occur. Where drilling is not possible, seed will be broadcast and the area shall be raked or chained to cover the seed. When broadcasting the seed, the pounds per acre are to be doubled. Seeding shall be repeated until a satisfactory stand is established as determined by the Authorized Officer. Evaluation of growth may not be made before completion of at least one full growing season after seeding.

Species to be planted in pounds of pure live seed\* per acre:

<u>Species</u>	<u>lb/acre</u>
Plains Bristlegrass	5lbs/A
Sand Bluestem	5lbs/A
Little Bluestem	3lbs/A
Big Bluestem	6lbs/A
Plains Coreopsis	2lbs/A
Sand Dropseed	1lbs/A

\*Pounds of pure live seed:

Pounds of seed x percent purity x percent germination = pounds pure live seed



U.S. Department of the Interior  
BUREAU OF LAND MANAGEMENT

## Operator Certification Data Report

05/14/2018

### Operator Certification

*I hereby certify that I, or someone under my direct supervision, have inspected the drill site and access route proposed herein; that I am familiar with the conditions which currently exist; that I have full knowledge of state and Federal laws applicable to this operation; that the statements made in this APD package are, to the best of my knowledge, true and correct; and that the work associated with the operations proposed herein will be performed in conformity with this APD package and the terms and conditions under which it is approved. I also certify that I, or the company I represent, am responsible for the operations conducted under this application. These statements are subject to the provisions of 18 U.S.C. 1001 for the filing of false statements.*

**NAME:** Jennifer Elrod

**Signed on:** 10/20/2017

**Title:** Senior Regulatory Technician

**Street Address:** 801 CHERRY STREET, SUITE 1200-UNIT 20

**City:** Fort Worth

**State:** TX

**Zip:** 76102

**Phone:** (817)953-3728

**Email address:** jelrod@chisholmenergy.com

### Field Representative

**Representative Name:**

**Street Address:**

**City:**

**State:**

**Zip:**

**Phone:**

**Email address:**





**Installation Procedure Prepared For:**

**Chisholm Energy**  
**13-3/8" x 9-5/8" x 5-1/2" 5/10M**  
**MBU-3T Wellhead System With**  
**CTH-HPS-F MOD Tubing Head**

**Publication # IP0571**

**May, 2017**

INFORMATION CONTAINED HEREIN IS THE PROPERTY OF CACTUS WELLHEAD, LLC. REPRODUCTION, DISCLOSURE, OR USE THEREOF IS PERMISSIBLE ONLY AS PROVIDED BY CONTRACT OR AS EXPRESSLY AUTHORIZED BY CACTUS WELLHEAD, LLC .

## Table of Contents

	<b>System Drawing</b> -----	<b>1</b>
	<b>Bill of Materials</b> -----	<b>2</b>
<b>Stage 1 —</b>	<b>Install the MBU-3T Housing</b> -----	<b>5</b>
<b>Stage 2 —</b>	<b>Nipple Up The BOP Stack</b> -----	<b>6</b>
<b>Stage 3 —</b>	<b>Test the BOP Stack</b> -----	<b>7</b>
<b>Stage 4 —</b>	<b>Run the Lower Wear Bushing</b> -----	<b>8</b>
	Run the Wear Bushing Before Drilling-----	8
	Retrieve the Wear Bushing After Drilling-----	8
<b>Stage 5 —</b>	<b>Hang Off the 9-5/8" Casing</b> -----	<b>9</b>
	Running the 13-5/8" Wash Tool -----	15
<b>Stage 5A —</b>	<b>Hang Off the 9-5/8" Casing (Emergency)</b> -----	<b>16</b>
<b>Stage 6 —</b>	<b>Install the MBU-3T Mandrel Hanger Packoff</b> -----	<b>18</b>
	Landing the Packoff-----	20
	Seal Test-----	21
	Engaging the Lockring-----	21
	Retrieving the Packoff-----	22
<b>Stage 6A —</b>	<b>Install the MBU-3T Emergency Packoff</b> -----	<b>23</b>
	Landing the Packoff-----	25
	Seal Test-----	26
	Engaging the Lockring-----	26
<b>Stage 7 —</b>	<b>Test the BOP Stack</b> -----	<b>27</b>
<b>Stage 8 —</b>	<b>Run the Upper Wear Bushing</b> -----	<b>28</b>
	Run the Wear Bushing Before Drilling-----	28
	Retrieve the Wear Bushing After Drilling-----	28
<b>Stage 9 —</b>	<b>Hang Off the 5-1/2" Casing</b> -----	<b>29</b>
<b>Stage 10 —</b>	<b>Install the 'Quick Connect' TA Cap Assembly</b> -----	<b>31</b>
	Connection Test-----	32
<b>Stage 11 —</b>	<b>Remove the TA Cap Assembly</b> -----	<b>33</b>
<b>Stage 12 —</b>	<b>Install the Tubing Head</b> -----	<b>35</b>
	Seal Test-----	36
	Flange Test-----	37
	<b>Recommended Procedure for Field Welding Pipe to</b>	
	<b>Wellhead Parts for Pressure Seal</b> -----	<b>38</b>



Company Name: Chisholm Energy Operating, LLC  
 Minis 1 FED 3BS 6H  
 Lea County, NM  
 Rig: Latshaw #17  
 Created by: Keith Noack  
 Date: 8:47, September 08 2017

Sec 1, T-21-S, R-32-E  
 Minis 1 FED 3BS 6H  
 Q171\*\*\* & WT-170\*\*\*  
 Design #1

PROJECT DETAILS: Lea County, NM

Geodetic System: US State Plane 1983  
 Datum: North American Datum 1983  
 Ellipsoid: GRS 1980  
 Zone: New Mexico Eastern Zone  
 System Datum: Mean Sea Level



CHISHOLM  
 ENERGY

WELL DETAILS: Minis 1 FED 3BS 6H

3719.0

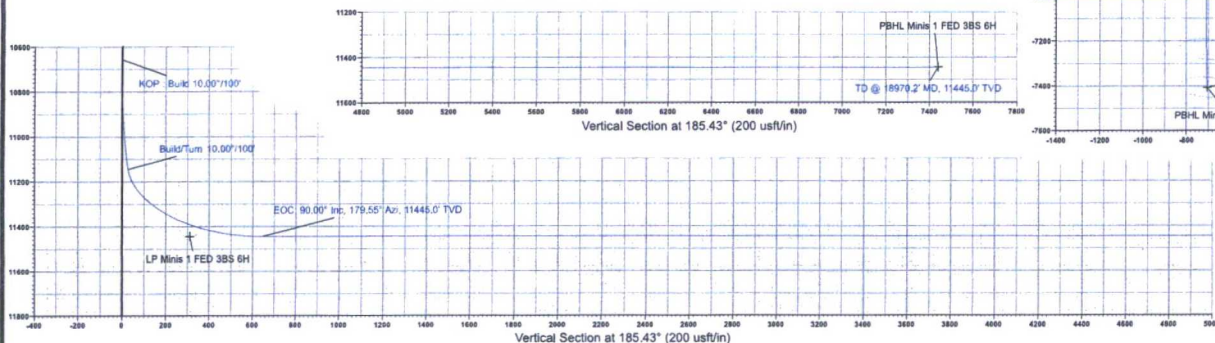
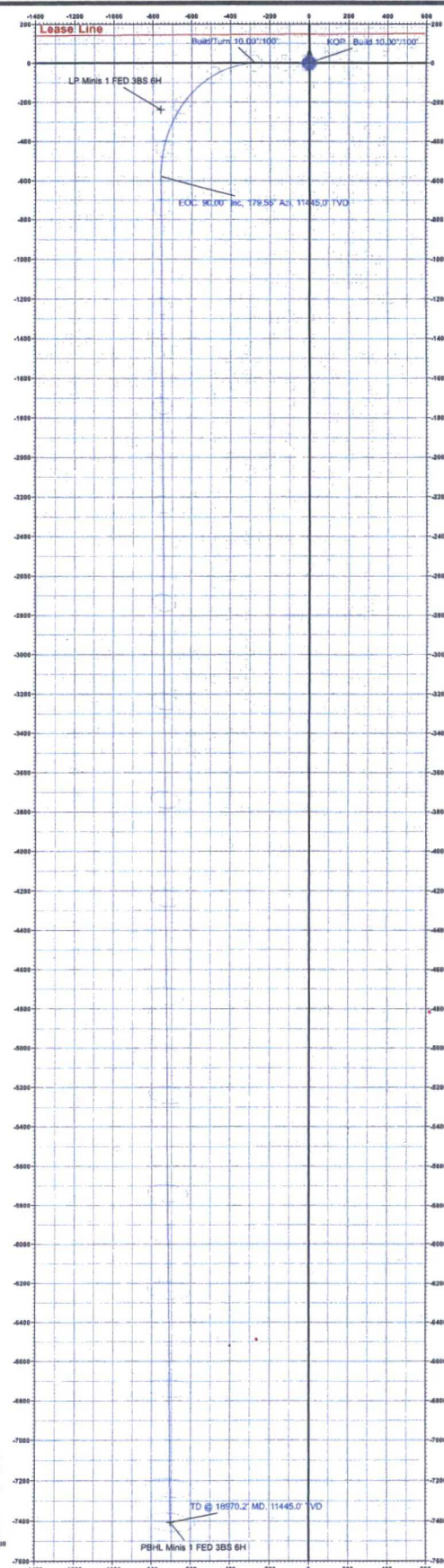
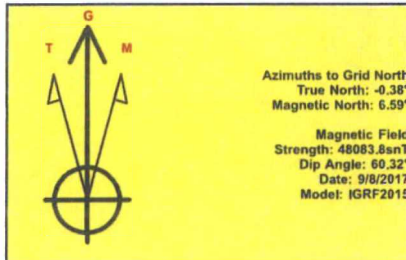
+N/-S	+E/-W	Northing	Easting	Latitude	Longitude
0.0	0.0	554338.00	759849.80	32° 31' 18.971 N	103° 37' 27.804 W

SECTION DETAILS

MD	Inc	Azi	TVD	+N/-S	+E/-W	Dleg	TFace	Vsect	Annotation
0.0	0.00	0.00	0.0	0.0	0.0	0.00	0.00	0.0	
10657.1	0.00	0.00	10657.1	0.0	0.0	0.00	0.00	0.0	KOP : Build 10.00°/100'
11242.1	58.50	269.55	11145.6	-2.1	-273.6	10.00	269.55	28.0	Build/Turn 10.00°/100'
12142.1	90.00	179.55	11445.0	-578.9	-757.6	10.00	-90.00	648.0	EOC: 90.00° Inc, 179.55° Azi, 11445.0' TVD
18970.2	90.00	179.55	11445.0	-7406.8	-704.0	0.00	0.00	7440.2	TD @ 18970.2' MD, 11445.0' TVD

DESIGN TARGET DETAILS

Name	TVD	+N/-S	+E/-W	Northing	Easting	Latitude	Longitude
LP Minis 1 FED 3BS 6H	11445.0	-239.0	-760.1	554099.00	759089.70	32° 31' 16.656 N	103° 37' 36.700 W
PBHL Minis 1 FED 3BS 6H	11445.0	-7406.8	-704.0	546931.20	759145.80	32° 30' 5.728 N	103° 37' 36.600 W



**Database:** EDM 5000.1 Single User Db  
**Company:** Chisholm Energy Operating, LLC  
**Project:** Lea County, NM  
**Site:** Sec 1, T-21-S, R-32-E  
**Well:** Minis 1 FED 3BS 6H  
**Wellbore:** Wellbore #1  
**Design:** Design #1

**Local Co-ordinate Reference:** Well Minis 1 FED 3BS 6H  
**TVD Reference:** RKB @ 3745.0usft (Latshaw #17)  
**MD Reference:** RKB @ 3745.0usft (Latshaw #17)  
**North Reference:** Grid  
**Survey Calculation Method:** Minimum Curvature

#### Design Targets

Target Name - hit/miss target - Shape	Dip Angle (°)	Dip Dir. (°)	TVD (usft)	+N/-S (usft)	+E/-W (usft)	Northing (usft)	Easting (usft)	Latitude	Longitude
LP Minis 1 FED 3BS 6H - plan misses target center by 93.2usft at 11836.9usft MD (11403.5 TVD, -287.4 N, -692.2 E) - Point	0.00	0.00	11,445.0	-239.0	-760.1	554,099.00	759,089.70	32° 31' 16.656 N	103° 37' 36.700 W
PBHL Minis 1 FED 3E - plan hits target center - Point	0.00	0.00	11,445.0	-7,406.8	-704.0	546,931.20	759,145.80	32° 30' 5.728 N	103° 37' 36.600 W

#### Plan Annotations

Measured Depth (usft)	Vertical Depth (usft)	Local Coordinates		Comment
		+N/-S (usft)	+E/-W (usft)	
10,657.1	10,657.1	0.0	0.0	KOP : Build 10.00°/100'
11,242.1	11,145.6	-2.1	-273.6	Build/Turn 10.00°/100'
12,142.1	11,445.0	-578.9	-757.6	EOC: 90.00° Inc, 179.55° Azi, 11445.0' TVD
18,970.2	11,445.0	-7,406.8	-704.0	TD @ 18970.2' MD, 11445.0' TVD



**Database:** EDM 5000.1 Single User Db  
**Company:** Chisholm Energy Operating, LLC  
**Project:** Lea County, NM  
**Site:** Sec 1, T-21-S, R-32-E  
**Well:** Minis 1 FED 3BS 6H  
**Wellbore:** Wellbore #1  
**Design:** Design #1

**Local Co-ordinate Reference:** Well Minis 1 FED 3BS 6H  
**TVD Reference:** RKB @ 3745.0usft (Latshaw #17)  
**MD Reference:** RKB @ 3745.0usft (Latshaw #17)  
**North Reference:** Grid  
**Survey Calculation Method:** Minimum Curvature

**Planned Survey**

Measured Depth (usft)	Inclination (°)	Azimuth (°)	Vertical Depth (usft)	+N/-S (usft)	+E/-W (usft)	Vertical Section (usft)	Dogleg Rate (°/100usft)	Build Rate (°/100usft)	Turn Rate (°/100usft)
14,000.0	90.00	179.55	11,445.0	-2,436.8	-743.0	2,496.1	0.00	0.00	0.00
14,100.0	90.00	179.55	11,445.0	-2,536.8	-742.2	2,595.6	0.00	0.00	0.00
14,200.0	90.00	179.55	11,445.0	-2,636.8	-741.4	2,695.1	0.00	0.00	0.00
14,300.0	90.00	179.55	11,445.0	-2,736.8	-740.7	2,794.6	0.00	0.00	0.00
14,400.0	90.00	179.55	11,445.0	-2,836.8	-739.9	2,894.0	0.00	0.00	0.00
14,500.0	90.00	179.55	11,445.0	-2,936.8	-739.1	2,993.5	0.00	0.00	0.00
14,600.0	90.00	179.55	11,445.0	-3,036.7	-738.3	3,093.0	0.00	0.00	0.00
14,700.0	90.00	179.55	11,445.0	-3,136.7	-737.5	3,192.5	0.00	0.00	0.00
14,800.0	90.00	179.55	11,445.0	-3,236.7	-736.7	3,291.9	0.00	0.00	0.00
14,900.0	90.00	179.55	11,445.0	-3,336.7	-735.9	3,391.4	0.00	0.00	0.00
15,000.0	90.00	179.55	11,445.0	-3,436.7	-735.2	3,490.9	0.00	0.00	0.00
15,100.0	90.00	179.55	11,445.0	-3,536.7	-734.4	3,590.4	0.00	0.00	0.00
15,200.0	90.00	179.55	11,445.0	-3,636.7	-733.6	3,689.8	0.00	0.00	0.00
15,300.0	90.00	179.55	11,445.0	-3,736.7	-732.8	3,789.3	0.00	0.00	0.00
15,400.0	90.00	179.55	11,445.0	-3,836.7	-732.0	3,888.8	0.00	0.00	0.00
15,500.0	90.00	179.55	11,445.0	-3,936.7	-731.2	3,988.3	0.00	0.00	0.00
15,600.0	90.00	179.55	11,445.0	-4,036.7	-730.5	4,087.7	0.00	0.00	0.00
15,700.0	90.00	179.55	11,445.0	-4,136.7	-729.7	4,187.2	0.00	0.00	0.00
15,800.0	90.00	179.55	11,445.0	-4,236.7	-728.9	4,286.7	0.00	0.00	0.00
15,900.0	90.00	179.55	11,445.0	-4,336.7	-728.1	4,386.1	0.00	0.00	0.00
16,000.0	90.00	179.55	11,445.0	-4,436.7	-727.3	4,485.6	0.00	0.00	0.00
16,100.0	90.00	179.55	11,445.0	-4,536.7	-726.5	4,585.1	0.00	0.00	0.00
16,200.0	90.00	179.55	11,445.0	-4,636.7	-725.7	4,684.6	0.00	0.00	0.00
16,300.0	90.00	179.55	11,445.0	-4,736.7	-725.0	4,784.0	0.00	0.00	0.00
16,400.0	90.00	179.55	11,445.0	-4,836.7	-724.2	4,883.5	0.00	0.00	0.00
16,500.0	90.00	179.55	11,445.0	-4,936.7	-723.4	4,983.0	0.00	0.00	0.00
16,600.0	90.00	179.55	11,445.0	-5,036.7	-722.6	5,082.5	0.00	0.00	0.00
16,700.0	90.00	179.55	11,445.0	-5,136.7	-721.8	5,181.9	0.00	0.00	0.00
16,800.0	90.00	179.55	11,445.0	-5,236.7	-721.0	5,281.4	0.00	0.00	0.00
16,900.0	90.00	179.55	11,445.0	-5,336.7	-720.2	5,380.9	0.00	0.00	0.00
17,000.0	90.00	179.55	11,445.0	-5,436.7	-719.5	5,480.4	0.00	0.00	0.00
17,100.0	90.00	179.55	11,445.0	-5,536.7	-718.7	5,579.8	0.00	0.00	0.00
17,200.0	90.00	179.55	11,445.0	-5,636.7	-717.9	5,679.3	0.00	0.00	0.00
17,300.0	90.00	179.55	11,445.0	-5,736.7	-717.1	5,778.8	0.00	0.00	0.00
17,400.0	90.00	179.55	11,445.0	-5,836.7	-716.3	5,878.3	0.00	0.00	0.00
17,500.0	90.00	179.55	11,445.0	-5,936.7	-715.5	5,977.7	0.00	0.00	0.00
17,600.0	90.00	179.55	11,445.0	-6,036.7	-714.8	6,077.2	0.00	0.00	0.00
17,700.0	90.00	179.55	11,445.0	-6,136.7	-714.0	6,176.7	0.00	0.00	0.00
17,800.0	90.00	179.55	11,445.0	-6,236.7	-713.2	6,276.2	0.00	0.00	0.00
17,900.0	90.00	179.55	11,445.0	-6,336.6	-712.4	6,375.6	0.00	0.00	0.00
18,000.0	90.00	179.55	11,445.0	-6,436.6	-711.6	6,475.1	0.00	0.00	0.00
18,100.0	90.00	179.55	11,445.0	-6,536.6	-710.8	6,574.6	0.00	0.00	0.00
18,200.0	90.00	179.55	11,445.0	-6,636.6	-710.0	6,674.0	0.00	0.00	0.00
18,300.0	90.00	179.55	11,445.0	-6,736.6	-709.3	6,773.5	0.00	0.00	0.00
18,400.0	90.00	179.55	11,445.0	-6,836.6	-708.5	6,873.0	0.00	0.00	0.00
18,500.0	90.00	179.55	11,445.0	-6,936.6	-707.7	6,972.5	0.00	0.00	0.00
18,600.0	90.00	179.55	11,445.0	-7,036.6	-706.9	7,071.9	0.00	0.00	0.00
18,700.0	90.00	179.55	11,445.0	-7,136.6	-706.1	7,171.4	0.00	0.00	0.00
18,800.0	90.00	179.55	11,445.0	-7,236.6	-705.3	7,270.9	0.00	0.00	0.00
18,900.0	90.00	179.55	11,445.0	-7,336.6	-704.6	7,370.4	0.00	0.00	0.00
<b>TD @ 18970.2' MD, 11445.0' TVD</b>									
18,970.2	90.00	179.55	11,445.0	-7,406.8	-704.0	7,440.2	0.00	0.00	0.00



**Database:** EDM 5000.1 Single User Db  
**Company:** Chisholm Energy Operating, LLC  
**Project:** Lea County, NM  
**Site:** Sec 1, T-21-S, R-32-E  
**Well:** Minis 1 FED 3BS 6H  
**Wellbore:** Wellbore #1  
**Design:** Design #1

**Local Co-ordinate Reference:** Well Minis 1 FED 3BS 6H  
**TVD Reference:** RKB @ 3745.0usft (Latshaw #17)  
**MD Reference:** RKB @ 3745.0usft (Latshaw #17)  
**North Reference:** Grid  
**Survey Calculation Method:** Minimum Curvature

**Planned Survey**

Measured Depth (usft)	Inclination (°)	Azimuth (°)	Vertical Depth (usft)	+N/-S (usft)	+E/-W (usft)	Vertical Section (usft)	Dogleg Rate (°/100usft)	Build Rate (°/100usft)	Turn Rate (°/100usft)
<b>KOP : Build 10.00°/100'</b>									
10,657.1	0.00	0.00	10,657.1	0.0	0.0	0.0	0.00	0.00	0.00
10,700.0	4.29	269.55	10,700.0	0.0	-1.6	0.2	10.00	10.00	0.00
10,750.0	9.29	269.55	10,749.6	-0.1	-7.5	0.8	10.00	10.00	0.00
10,800.0	14.29	269.55	10,798.5	-0.1	-17.7	1.8	10.00	10.00	0.00
10,850.0	19.29	269.55	10,846.4	-0.3	-32.2	3.3	10.00	10.00	0.00
10,900.0	24.29	269.55	10,892.8	-0.4	-50.7	5.2	10.00	10.00	0.00
10,950.0	29.29	269.55	10,937.4	-0.6	-73.2	7.5	10.00	10.00	0.00
11,000.0	34.29	269.55	10,979.9	-0.8	-99.6	10.2	10.00	10.00	0.00
11,050.0	39.29	269.55	11,019.9	-1.0	-129.5	13.3	10.00	10.00	0.00
11,100.0	44.29	269.55	11,057.2	-1.3	-162.8	16.7	10.00	10.00	0.00
11,150.0	49.29	269.55	11,091.4	-1.6	-199.3	20.4	10.00	10.00	0.00
11,200.0	54.29	269.55	11,122.3	-1.9	-238.5	24.4	10.00	10.00	0.00
<b>Build/Turn 10.00°/100'</b>									
11,242.1	58.50	269.55	11,145.6	-2.1	-273.6	28.0	10.00	10.00	0.00
11,250.0	58.50	268.62	11,149.8	-2.3	-280.3	28.8	10.00	0.04	-11.73
11,300.0	58.68	262.77	11,175.8	-5.5	-322.8	36.0	10.00	0.35	-11.71
11,350.0	59.12	256.95	11,201.7	-13.0	-365.0	47.5	10.00	0.88	-11.63
11,400.0	59.82	251.20	11,227.1	-24.8	-406.3	63.1	10.00	1.39	-11.50
11,450.0	60.76	245.55	11,251.9	-40.8	-446.7	82.9	10.00	1.89	-11.31
11,500.0	61.94	240.01	11,275.9	-60.9	-485.7	106.6	10.00	2.35	-11.08
11,550.0	63.33	234.60	11,298.9	-84.9	-523.0	134.0	10.00	2.79	-10.82
11,600.0	64.92	229.33	11,320.7	-112.6	-558.4	164.9	10.00	3.19	-10.54
11,650.0	66.70	224.21	11,341.2	-143.8	-591.6	199.2	10.00	3.55	-10.25
11,700.0	68.63	219.22	11,360.2	-178.3	-622.4	236.4	10.00	3.87	-9.97
11,750.0	70.71	214.37	11,377.6	-215.9	-650.4	276.4	10.00	4.16	-9.70
11,800.0	72.92	209.65	11,393.2	-256.1	-675.6	318.9	10.00	4.41	-9.45
11,850.0	75.23	205.04	11,406.9	-298.8	-697.7	363.5	10.00	4.62	-9.22
11,900.0	77.63	200.53	11,418.7	-343.6	-716.5	409.9	10.00	4.80	-9.03
11,950.0	80.10	196.10	11,428.3	-390.2	-731.9	457.7	10.00	4.95	-8.86
12,000.0	82.63	191.73	11,435.8	-438.2	-743.7	506.6	10.00	5.06	-8.72
12,050.0	85.20	187.42	11,441.1	-487.2	-752.0	556.1	10.00	5.14	-8.62
12,100.0	87.80	183.14	11,444.2	-536.9	-756.6	606.0	10.00	5.20	-8.56
<b>EOC: 90.00° Inc, 179.55° Azi, 11445.0' TVD</b>									
12,142.1	90.00	179.55	11,445.0	-578.9	-757.6	648.0	10.00	5.22	-8.53
12,200.0	90.00	179.55	11,445.0	-636.8	-757.1	705.6	0.00	0.00	0.00
12,300.0	90.00	179.55	11,445.0	-736.8	-756.4	805.1	0.00	0.00	0.00
12,400.0	90.00	179.55	11,445.0	-836.8	-755.6	904.6	0.00	0.00	0.00
12,500.0	90.00	179.55	11,445.0	-936.8	-754.8	1,004.0	0.00	0.00	0.00
12,600.0	90.00	179.55	11,445.0	-1,036.8	-754.0	1,103.5	0.00	0.00	0.00
12,700.0	90.00	179.55	11,445.0	-1,136.8	-753.2	1,203.0	0.00	0.00	0.00
12,800.0	90.00	179.55	11,445.0	-1,236.8	-752.4	1,302.5	0.00	0.00	0.00
12,900.0	90.00	179.55	11,445.0	-1,336.8	-751.6	1,401.9	0.00	0.00	0.00
13,000.0	90.00	179.55	11,445.0	-1,436.8	-750.9	1,501.4	0.00	0.00	0.00
13,100.0	90.00	179.55	11,445.0	-1,536.8	-750.1	1,600.9	0.00	0.00	0.00
13,200.0	90.00	179.55	11,445.0	-1,636.8	-749.3	1,700.3	0.00	0.00	0.00
13,300.0	90.00	179.55	11,445.0	-1,736.8	-748.5	1,799.8	0.00	0.00	0.00
13,400.0	90.00	179.55	11,445.0	-1,836.8	-747.7	1,899.3	0.00	0.00	0.00
13,500.0	90.00	179.55	11,445.0	-1,936.8	-746.9	1,998.8	0.00	0.00	0.00
13,600.0	90.00	179.55	11,445.0	-2,036.8	-746.1	2,098.2	0.00	0.00	0.00
13,700.0	90.00	179.55	11,445.0	-2,136.8	-745.4	2,197.7	0.00	0.00	0.00
13,800.0	90.00	179.55	11,445.0	-2,236.8	-744.6	2,297.2	0.00	0.00	0.00
13,900.0	90.00	179.55	11,445.0	-2,336.8	-743.8	2,396.7	0.00	0.00	0.00

**Database:** EDM 5000.1 Single User Db  
**Company:** Chisholm Energy Operating, LLC  
**Project:** Lea County, NM  
**Site:** Sec 1, T-21-S, R-32-E  
**Well:** Minis 1 FED 3BS 6H  
**Wellbore:** Wellbore #1  
**Design:** Design #1

**Local Co-ordinate Reference:** Well Minis 1 FED 3BS 6H  
**TVD Reference:** RKB @ 3745.0usft (Latshaw #17)  
**MD Reference:** RKB @ 3745.0usft (Latshaw #17)  
**North Reference:** Grid  
**Survey Calculation Method:** Minimum Curvature

**Planned Survey**

Measured Depth (usft)	Inclination (°)	Azimuth (°)	Vertical Depth (usft)	+N/-S (usft)	+E/-W (usft)	Vertical Section (usft)	Dogleg Rate (°/100usft)	Build Rate (°/100usft)	Turn Rate (°/100usft)
5,400.0	0.00	0.00	5,400.0	0.0	0.0	0.0	0.00	0.00	0.00
5,500.0	0.00	0.00	5,500.0	0.0	0.0	0.0	0.00	0.00	0.00
5,600.0	0.00	0.00	5,600.0	0.0	0.0	0.0	0.00	0.00	0.00
5,700.0	0.00	0.00	5,700.0	0.0	0.0	0.0	0.00	0.00	0.00
5,800.0	0.00	0.00	5,800.0	0.0	0.0	0.0	0.00	0.00	0.00
5,900.0	0.00	0.00	5,900.0	0.0	0.0	0.0	0.00	0.00	0.00
6,000.0	0.00	0.00	6,000.0	0.0	0.0	0.0	0.00	0.00	0.00
6,100.0	0.00	0.00	6,100.0	0.0	0.0	0.0	0.00	0.00	0.00
6,200.0	0.00	0.00	6,200.0	0.0	0.0	0.0	0.00	0.00	0.00
6,300.0	0.00	0.00	6,300.0	0.0	0.0	0.0	0.00	0.00	0.00
6,400.0	0.00	0.00	6,400.0	0.0	0.0	0.0	0.00	0.00	0.00
6,500.0	0.00	0.00	6,500.0	0.0	0.0	0.0	0.00	0.00	0.00
6,600.0	0.00	0.00	6,600.0	0.0	0.0	0.0	0.00	0.00	0.00
6,700.0	0.00	0.00	6,700.0	0.0	0.0	0.0	0.00	0.00	0.00
6,800.0	0.00	0.00	6,800.0	0.0	0.0	0.0	0.00	0.00	0.00
6,900.0	0.00	0.00	6,900.0	0.0	0.0	0.0	0.00	0.00	0.00
7,000.0	0.00	0.00	7,000.0	0.0	0.0	0.0	0.00	0.00	0.00
7,100.0	0.00	0.00	7,100.0	0.0	0.0	0.0	0.00	0.00	0.00
7,200.0	0.00	0.00	7,200.0	0.0	0.0	0.0	0.00	0.00	0.00
7,300.0	0.00	0.00	7,300.0	0.0	0.0	0.0	0.00	0.00	0.00
7,400.0	0.00	0.00	7,400.0	0.0	0.0	0.0	0.00	0.00	0.00
7,500.0	0.00	0.00	7,500.0	0.0	0.0	0.0	0.00	0.00	0.00
7,600.0	0.00	0.00	7,600.0	0.0	0.0	0.0	0.00	0.00	0.00
7,700.0	0.00	0.00	7,700.0	0.0	0.0	0.0	0.00	0.00	0.00
7,800.0	0.00	0.00	7,800.0	0.0	0.0	0.0	0.00	0.00	0.00
7,900.0	0.00	0.00	7,900.0	0.0	0.0	0.0	0.00	0.00	0.00
8,000.0	0.00	0.00	8,000.0	0.0	0.0	0.0	0.00	0.00	0.00
8,100.0	0.00	0.00	8,100.0	0.0	0.0	0.0	0.00	0.00	0.00
8,200.0	0.00	0.00	8,200.0	0.0	0.0	0.0	0.00	0.00	0.00
8,300.0	0.00	0.00	8,300.0	0.0	0.0	0.0	0.00	0.00	0.00
8,400.0	0.00	0.00	8,400.0	0.0	0.0	0.0	0.00	0.00	0.00
8,500.0	0.00	0.00	8,500.0	0.0	0.0	0.0	0.00	0.00	0.00
8,600.0	0.00	0.00	8,600.0	0.0	0.0	0.0	0.00	0.00	0.00
8,700.0	0.00	0.00	8,700.0	0.0	0.0	0.0	0.00	0.00	0.00
8,800.0	0.00	0.00	8,800.0	0.0	0.0	0.0	0.00	0.00	0.00
8,900.0	0.00	0.00	8,900.0	0.0	0.0	0.0	0.00	0.00	0.00
9,000.0	0.00	0.00	9,000.0	0.0	0.0	0.0	0.00	0.00	0.00
9,100.0	0.00	0.00	9,100.0	0.0	0.0	0.0	0.00	0.00	0.00
9,200.0	0.00	0.00	9,200.0	0.0	0.0	0.0	0.00	0.00	0.00
9,300.0	0.00	0.00	9,300.0	0.0	0.0	0.0	0.00	0.00	0.00
9,400.0	0.00	0.00	9,400.0	0.0	0.0	0.0	0.00	0.00	0.00
9,500.0	0.00	0.00	9,500.0	0.0	0.0	0.0	0.00	0.00	0.00
9,600.0	0.00	0.00	9,600.0	0.0	0.0	0.0	0.00	0.00	0.00
9,700.0	0.00	0.00	9,700.0	0.0	0.0	0.0	0.00	0.00	0.00
9,800.0	0.00	0.00	9,800.0	0.0	0.0	0.0	0.00	0.00	0.00
9,900.0	0.00	0.00	9,900.0	0.0	0.0	0.0	0.00	0.00	0.00
10,000.0	0.00	0.00	10,000.0	0.0	0.0	0.0	0.00	0.00	0.00
10,100.0	0.00	0.00	10,100.0	0.0	0.0	0.0	0.00	0.00	0.00
10,200.0	0.00	0.00	10,200.0	0.0	0.0	0.0	0.00	0.00	0.00
10,300.0	0.00	0.00	10,300.0	0.0	0.0	0.0	0.00	0.00	0.00
10,400.0	0.00	0.00	10,400.0	0.0	0.0	0.0	0.00	0.00	0.00
10,500.0	0.00	0.00	10,500.0	0.0	0.0	0.0	0.00	0.00	0.00
10,600.0	0.00	0.00	10,600.0	0.0	0.0	0.0	0.00	0.00	0.00



**Database:** EDM 5000.1 Single User Db  
**Company:** Chisholm Energy Operating, LLC  
**Project:** Lea County, NM  
**Site:** Sec 1, T-21-S, R-32-E  
**Well:** Minis 1 FED 3BS 6H  
**Wellbore:** Wellbore #1  
**Design:** Design #1

**Local Co-ordinate Reference:** Well Minis 1 FED 3BS 6H  
**TVD Reference:** RKB @ 3745.0usft (Latshaw #17)  
**MD Reference:** RKB @ 3745.0usft (Latshaw #17)  
**North Reference:** Grid  
**Survey Calculation Method:** Minimum Curvature

**Planned Survey**

Measured Depth (usft)	Inclination (°)	Azimuth (°)	Vertical Depth (usft)	+N/-S (usft)	+E/-W (usft)	Vertical Section (usft)	Dogleg Rate (°/100usft)	Build Rate (°/100usft)	Turn Rate (°/100usft)
0.0	0.00	0.00	0.0	0.0	0.0	0.0	0.00	0.00	0.00
100.0	0.00	0.00	100.0	0.0	0.0	0.0	0.00	0.00	0.00
200.0	0.00	0.00	200.0	0.0	0.0	0.0	0.00	0.00	0.00
300.0	0.00	0.00	300.0	0.0	0.0	0.0	0.00	0.00	0.00
400.0	0.00	0.00	400.0	0.0	0.0	0.0	0.00	0.00	0.00
500.0	0.00	0.00	500.0	0.0	0.0	0.0	0.00	0.00	0.00
600.0	0.00	0.00	600.0	0.0	0.0	0.0	0.00	0.00	0.00
700.0	0.00	0.00	700.0	0.0	0.0	0.0	0.00	0.00	0.00
800.0	0.00	0.00	800.0	0.0	0.0	0.0	0.00	0.00	0.00
900.0	0.00	0.00	900.0	0.0	0.0	0.0	0.00	0.00	0.00
1,000.0	0.00	0.00	1,000.0	0.0	0.0	0.0	0.00	0.00	0.00
1,100.0	0.00	0.00	1,100.0	0.0	0.0	0.0	0.00	0.00	0.00
1,200.0	0.00	0.00	1,200.0	0.0	0.0	0.0	0.00	0.00	0.00
1,300.0	0.00	0.00	1,300.0	0.0	0.0	0.0	0.00	0.00	0.00
1,400.0	0.00	0.00	1,400.0	0.0	0.0	0.0	0.00	0.00	0.00
1,500.0	0.00	0.00	1,500.0	0.0	0.0	0.0	0.00	0.00	0.00
1,600.0	0.00	0.00	1,600.0	0.0	0.0	0.0	0.00	0.00	0.00
1,700.0	0.00	0.00	1,700.0	0.0	0.0	0.0	0.00	0.00	0.00
1,800.0	0.00	0.00	1,800.0	0.0	0.0	0.0	0.00	0.00	0.00
1,900.0	0.00	0.00	1,900.0	0.0	0.0	0.0	0.00	0.00	0.00
2,000.0	0.00	0.00	2,000.0	0.0	0.0	0.0	0.00	0.00	0.00
2,100.0	0.00	0.00	2,100.0	0.0	0.0	0.0	0.00	0.00	0.00
2,200.0	0.00	0.00	2,200.0	0.0	0.0	0.0	0.00	0.00	0.00
2,300.0	0.00	0.00	2,300.0	0.0	0.0	0.0	0.00	0.00	0.00
2,400.0	0.00	0.00	2,400.0	0.0	0.0	0.0	0.00	0.00	0.00
2,500.0	0.00	0.00	2,500.0	0.0	0.0	0.0	0.00	0.00	0.00
2,600.0	0.00	0.00	2,600.0	0.0	0.0	0.0	0.00	0.00	0.00
2,700.0	0.00	0.00	2,700.0	0.0	0.0	0.0	0.00	0.00	0.00
2,800.0	0.00	0.00	2,800.0	0.0	0.0	0.0	0.00	0.00	0.00
2,900.0	0.00	0.00	2,900.0	0.0	0.0	0.0	0.00	0.00	0.00
3,000.0	0.00	0.00	3,000.0	0.0	0.0	0.0	0.00	0.00	0.00
3,100.0	0.00	0.00	3,100.0	0.0	0.0	0.0	0.00	0.00	0.00
3,200.0	0.00	0.00	3,200.0	0.0	0.0	0.0	0.00	0.00	0.00
3,300.0	0.00	0.00	3,300.0	0.0	0.0	0.0	0.00	0.00	0.00
3,400.0	0.00	0.00	3,400.0	0.0	0.0	0.0	0.00	0.00	0.00
3,500.0	0.00	0.00	3,500.0	0.0	0.0	0.0	0.00	0.00	0.00
3,600.0	0.00	0.00	3,600.0	0.0	0.0	0.0	0.00	0.00	0.00
3,700.0	0.00	0.00	3,700.0	0.0	0.0	0.0	0.00	0.00	0.00
3,800.0	0.00	0.00	3,800.0	0.0	0.0	0.0	0.00	0.00	0.00
3,900.0	0.00	0.00	3,900.0	0.0	0.0	0.0	0.00	0.00	0.00
4,000.0	0.00	0.00	4,000.0	0.0	0.0	0.0	0.00	0.00	0.00
4,100.0	0.00	0.00	4,100.0	0.0	0.0	0.0	0.00	0.00	0.00
4,200.0	0.00	0.00	4,200.0	0.0	0.0	0.0	0.00	0.00	0.00
4,300.0	0.00	0.00	4,300.0	0.0	0.0	0.0	0.00	0.00	0.00
4,400.0	0.00	0.00	4,400.0	0.0	0.0	0.0	0.00	0.00	0.00
4,500.0	0.00	0.00	4,500.0	0.0	0.0	0.0	0.00	0.00	0.00
4,600.0	0.00	0.00	4,600.0	0.0	0.0	0.0	0.00	0.00	0.00
4,700.0	0.00	0.00	4,700.0	0.0	0.0	0.0	0.00	0.00	0.00
4,800.0	0.00	0.00	4,800.0	0.0	0.0	0.0	0.00	0.00	0.00
4,900.0	0.00	0.00	4,900.0	0.0	0.0	0.0	0.00	0.00	0.00
5,000.0	0.00	0.00	5,000.0	0.0	0.0	0.0	0.00	0.00	0.00
5,100.0	0.00	0.00	5,100.0	0.0	0.0	0.0	0.00	0.00	0.00
5,200.0	0.00	0.00	5,200.0	0.0	0.0	0.0	0.00	0.00	0.00
5,300.0	0.00	0.00	5,300.0	0.0	0.0	0.0	0.00	0.00	0.00



**Database:** EDM 5000.1 Single User Db  
**Company:** Chisholm Energy Operating, LLC  
**Project:** Lea County, NM  
**Site:** Sec 1, T-21-S, R-32-E  
**Well:** Minis 1 FED 3BS 6H  
**Wellbore:** Wellbore #1  
**Design:** Design #1

**Local Co-ordinate Reference:** Well Minis 1 FED 3BS 6H  
**TVD Reference:** RKB @ 3745.0usft (Latshaw #17)  
**MD Reference:** RKB @ 3745.0usft (Latshaw #17)  
**North Reference:** Grid  
**Survey Calculation Method:** Minimum Curvature

<b>Project</b>	Lea County, NM	<b>System Datum:</b>	Mean Sea Level
<b>Map System:</b>	US State Plane 1983		
<b>Geo Datum:</b>	North American Datum 1983		
<b>Map Zone:</b>	New Mexico Eastern Zone		

<b>Site</b>	Sec 1, T-21-S, R-32-E				
<b>Site Position:</b>		<b>Northing:</b>	554,324.00 usft	<b>Latitude:</b>	32° 31' 19.000 N
<b>From:</b>	Map	<b>Easting:</b>	757,290.00 usft	<b>Longitude:</b>	103° 37' 57.701 W
<b>Position Uncertainty:</b>	0.0 usft	<b>Slot Radius:</b>	13-3/16 "	<b>Grid Convergence:</b>	0.38 °

Well	Minis 1 FED 3BS 6H					
Well Position	+N/-S	14.0 usft	Northing:	554,338.00 usft	Latitude:	32° 31' 18.971 N
	+E/-W	2,559.8 usft	Easting:	759,849.80 usft	Longitude:	103° 37' 27.804 W
Position Uncertainty	0.0 usft		Wellhead Elevation:		Ground Level:	3,719.0 usft

<b>Wellbore</b>	Wellbore #1				
<b>Magnetics</b>	<b>Model Name</b>	<b>Sample Date</b>	<b>Declination (°)</b>	<b>Dip Angle (°)</b>	<b>Field Strength (nT)</b>
	IGRF2015	9/8/2017	6.98	60.32	48,083.81720426

<b>Design</b>	Design #1				
<b>Audit Notes:</b>					
<b>Version:</b>	<b>Phase:</b>	PLAN	<b>Tie On Depth:</b>	0.0	
<b>Vertical Section:</b>	<b>Depth From (TVD) (usft)</b>	<b>+N/-S (usft)</b>	<b>+E/-W (usft)</b>	<b>Direction (°)</b>	
	0.0	0.0	0.0	185.43	

Plan Sections										
Measured Depth (usft)	Inclination (°)	Azimuth (°)	Vertical Depth (usft)	+N/-S (usft)	+E/-W (usft)	Dogleg Rate (°/100usft)	Build Rate (°/100usft)	Turn Rate (°/100usft)	TFO (°)	Target
0.0	0.00	0.00	0.0	0.0	0.0	0.00	0.00	0.00	0.00	
10,657.1	0.00	0.00	10,657.1	0.0	0.0	0.00	0.00	0.00	0.00	
11,242.1	58.50	269.55	11,145.6	-2.1	-273.6	10.00	10.00	0.00	269.55	
12,142.1	90.00	179.55	11,445.0	-578.9	-757.6	10.00	3.50	-10.00	-90.00	
18,970.2	90.00	179.55	11,445.0	-7,406.8	-704.0	0.00	0.00	0.00	0.00	0.00 PBHL Minis 1 FED



## **Chisholm Energy Operating, LLC**

**Lea County, NM  
Sec 1, T-21-S, R-32-E  
Minis 1 FED 3BS 6H**

**Wellbore #1**

**Plan: Design #1**

## **QES Well Planning Report**

**08 September, 2017**



**Public Safety:****911 or**

Lea County Sheriff's Department	Number:	(575)396-3611
Lea County Emergency Management-Lorenzo Velasquez	Number:	(575)391-2983
Lea County Fire Marshal		
Lorenzo Velasquez, Director	Number:	(575)391-2983
Jeff Broom, Deputy Fire Marshal	Number:	(575)391-2988
Fire Department:		
Knowles Fire Department	Number:	(505)392-2810
City of Hobbs Fire Department	Number:	(505)397-9308
Jal Volunteer Fire Department	Number:	(505)395-2221
Lovington Fire Department	Number:	(575)396-2359
Maljamar Fire Department	Number:	(505)676-4100
Tatum Volunteer Fire Department	Number:	(505)398-3473
Eunice Fire Department	Number:	(575)394-3258
Hospital: Lea Regional Medical Center	Number:	(575)492-5000
AirMed: Medevac	Number:	(888)303-9112
Dept. of Public Safety	Number:	(505)827-9000
<b>New Mexico OCD-Dist. 1-Hobbs-</b>	Office	Number: (575)393-6161
	Emergency	Number: (575)370-3186
Lea County Road Department	Number:	(575)391-2940
NMDOT	Number:	(505)827-5100



admitted to location.

5. Well control equipment:

- a. See exhibit BOP and Choke Diagrams

6. Communication:

- a. While working under masks chalkboards will be used for communication.
- b. Hand signals will be used where chalk board is inappropriate.
- c. Two-way radio will be used to communicate off location in case of emergency help is required. In most cases, cellular telephones will be available at most drilling foreman's trailer or living quarters.

7. Drill stem Testing:

No DSTs are planned at this time.

- 8. Drilling contractor supervisor will be required to be familiar with the effects H<sub>2</sub>S has on tubular goods and other mechanical equipment.
- 9. If H<sub>2</sub>S is encountered, mud system will be altered if necessary to maintain control of formation. A mud gas separator will be brought into service along with H<sub>2</sub>S scavengers if necessary.

### **Emergency Assistance Telephone List**

#### **Chisholm Energy Holdings, LLC**

Chisholm Energy Operating, LLC

Vice President of Operations-Brad Grandstaff

Office: (817)953-6063

Office: (817)953-3150

Cell: (972)977-9221

Drilling Superintendent-Russell Simons

Cell: (830)285-7501

Production Superintendent-Paul Martinez

Cell: (325)206-1722

## Contacting Authorities

Chisholm Energy Operating personnel must liaise with local and state agencies to ensure a proper response to a major release. Additionally, the OCD must be notified of the release as soon as possible but no later than 4 hours. Agencies will ask for information such as type and volume of release, wind direction, location of release, etc. Be prepared with all information available including directions to site. The following call list of essential and potential responders has been prepared for use during a release. Chisholm Energy Operating, LLC response must be in coordination with the State of New Mexico's "Hazardous Materials Emergency Response Plan" (HMERP).

## Hydrogen Sulfide Drilling Operations Plan

1. All Company and Contract personnel admitted on location must be trained by a qualified H2S safety instructor to the following:
  - A. Characteristics of H2S
  - B. Physical effects and hazards
  - C. Principal and operation of H2S detectors, warning system and briefing areas.
  - D. Evacuation procedure, routes and first aid.
  - E. Proper use of safety equipment & life support systems
  - F. Essential personnel meeting Medical Evaluation criteria will receive additional training on the proper use of 30-minute pressure demand air packs.
2. H2S Detection and Alarm Systems:
  - a. H2S sensors/detectors to be located on the drilling rig floor, in the base of the sub structure/cellar area, on the mud pits in the shale shaker area. Additional H2S detectors may be placed as deemed necessary.
  - b. An audio alarm system will be installed on the derrick floor and in the top doghouse.
3. Windsock and/or wind streamers:
  - a. Windsock at mudpit area should be high enough to be visible.
  - b. Windsock on the rig floor and/ or top doghouse should be high enough to be visible.
4. Condition Flags and Signs
  - a. Warning sign on access road to location.
  - b. Flags to be displayed on sign at entrance to location. Green flag indicates normal safe condition. Yellow flag indicates potential pressure and danger. Red flag indicates danger (H2S present in dangerous concentration). Only H2S trained and certified personnel

## Escape

Crews shall escape upwind of escaping gas in the event of an emergency release of gas. Escape can be facilitated from the location entrance road. Crew should then block entrance to the location from the lease road so as not to allow anyone traversing into a hazardous area. The blockade should be at a safe distance outside of the ROE. There are NO homes or buildings in or near the ROE.

Assumed 100 ppm ROE = 3000'  
100 ppm H<sub>2</sub>S concentration shall trigger activation of this plan

## Emergency Procedures

In the event of a release of gas containing H<sub>2</sub>S, the first responder(s) must:

- « Isolate the area and prevent entry by other persons into the 100 ppm ROE.
- « Evacuate any public places encompassed by the 100 ppm ROE.
- « Be equipped with H<sub>2</sub>S monitors and air packs in order to control the release.
- « Use the "buddy system" to ensure no injuries occur during the response.
- « Take precautions to avoid personal injury during this operation.
- « Contact operator and/or local officials to aid in operation. See list of phone numbers attached.
- « Have received training
  - in the: Detection of
  - H<sub>2</sub>S, and
  - Measures for protection against the gas,
  - Equipment used for protection and emergency response.

## Ignition of Gas Source

Should control of the well be considered lost and ignition considered, take care to protect against exposure to Sulfur Dioxide (SO<sub>2</sub>). Intentional ignition must be coordinated with the NMOCD and local officials. Additionally, the NM State Police may become involved. NM State Police shall be the Incident Command on scene of any major release. Take care to protect downwind whenever there is an ignition of the gas.

## Characteristics of H<sub>2</sub>S and SO<sub>2</sub>

Common Name	Chemical Formula	Specific Gravity	Threshold Limit	Hazardous Limit	Lethal Concentration
Hydrogen Sulfide	H <sub>2</sub> S	1.189 Air=1	10 ppm	100 ppm/hr	600 ppm
Sulfur Dioxide	SO <sub>2</sub>	2.21 Air=1	2 ppm	N/A	1000 ppm



**Chisholm Energy Operating, LLC**

801 Cherry St., Suite 1200-Unit 20

Fort Worth, TX 76102

**H2S Contingency Plan**

**Lea County, NM**

**Casing Program: Minis (13 3/8" x 9 5/8" x 5 1/2")**

Open Hole Size (Inches)	Casing Depth; From (ft)	Casing Setting Depth (ft) MD	Casing Setting Depth (ft) TVD	Casing Size (inches)	Casing Weight (lb/ft)	Casing Grade	Thread	Condition	Anticipated Mud Weight (ppg)	Burst (psi)	Burst SF (1.125)	Collapse (psi)	Collapse SF (1.125)	Tension Joint (klbs)	Air Weight (lbs)	Tension Joint SF (1.8)	Tension Body (klbs)	Air Weight (lbs)	Tension Body SF (1.8)
Surface																			
17.5"	0'	1,500'	1,500'	13 3/8"	54.5	J-55	BTC	New	8.4	2730	4.17	1130	1.72	909,000	81,750	11.12	853,000	81,750	10.43
Intermediate																			
12.25"	0'	5,400'	5,400'	9 5/8"	40	J-55	LTC	New	10.2	3950	1.38	2570	1.35	520,000	216,000	2.41	630,000	216,000	2.92
Production																			
8.75"	0'	18,970'	11,445'	5 1/2"	17	P-110	BTC	New	9.2	10640	1.94	7480	1.37	568,000	194,565	2.92	546,000	194,565	2.81

**Casing Design Criteria and Casing Loading Assumptions:**

Surface

Tension A 1.8 design factor with effects of buoyancy with a fluid equal to a mud weight of: 8.4 ppg  
Collapse A 1.125 design factor with full internal evacuation and collapse force equal to a mud gradient of: 8.4 ppg  
Burst A 1.125 design factor with full external evacuation and burst force equal to a mud gradient of: 8.4 ppg

Intermediate

Tension A 1.8 design factor with effects of buoyancy with a fluid equal to a mud weight of: 10.2 ppg  
Collapse A 1.125 design factor with 1/3 TVD internal evacuation and collapse force equal to a mud gradient of: 10.2 ppg  
Burst A 1.125 design factor with full external evacuation and burst force equal to a mud gradient of: 10.2 ppg

Production

Tension A 1.8 design factor with effects of buoyancy with a fluid equal to a mud weight of: 9.2 ppg  
Collapse A 1.125 design factor with full internal evacuation and collapse force equal to a mud gradient of: 9.2 ppg  
Burst A 1.125 design factor with full external evacuation and burst force equal to a mud gradient of: 9.2 ppg

Casing Program: Minis (13 3/8" x 9 5/8" x 5 1/2")

Open Hole Size (Inches)	Casing Depth; From (ft)	Casing Setting Depth (ft) MD	Casing Setting Depth (ft) TVD	Casing Size (inches)	Casing Weight (lb/ft)	Casing Grade	Thread	Condition	Anticipated Mud Weight (ppg)	Burst (psi)	Burst SF (1.125)	Collapse (psi)	Collapse SF (1.125)	Tension Joint (klbs)	Air Weight (lbs)	Tension Joint SF (1.8)	Tension Body (klbs)	Air Weight (lbs)	Tension Body SF (1.8)
Surface																			
17.5"	0'	1,500'	1,500'	13 3/8"	54.5	J-55	BTC	New	8.4	2730	4.17	1130	1.72	909,000	81,750	11.12	853,000	81,750	10.43
Intermediate																			
12.25"	0'	5,400'	5,400'	9 5/8"	40	J-55	LTC	New	10.2	3950	1.38	2570	1.35	520,000	216,000	2.41	630,000	216,000	2.92
Production																			
8.75"	0'	18,970'	11,445'	5 1/2"	17	P-110	BTC	New	9.2	10640	1.94	7480	1.37	568,000	194,565	2.92	546,000	194,565	2.81

**Casing Design Criteria and Casing Loading Assumptions:**

<u>Surface</u>		
Tension A 1.8 design factor with effects of buoyancy with a fluid equal to a mud weight of:	8.4 ppg	
Collapse A 1.125 design factor with full internal evacuation and collapse force equal to a mud gradient of:	8.4 ppg	
Burst A 1.125 design factor with full external evacuation and burst force equal to a mud gradient of:	8.4 ppg	
<u>Intermediate</u>		
Tension A 1.8 design factor with effects of buoyancy with a fluid equal to a mud weight of:	10.2 ppg	
Collapse A 1.125 design factor with 1/3 TVD internal evacuation and collapse force equal to a mud gradient of:	10.2 ppg	
Burst A 1.125 design factor with full external evacuation and burst force equal to a mud gradient of:	10.2 ppg	
<u>Production</u>		
Tension A 1.8 design factor with effects of buoyancy with a fluid equal to a mud weight of:	9.2 ppg	
Collapse A 1.125 design factor with full internal evacuation and collapse force equal to a mud gradient of:	9.2 ppg	
Burst A 1.125 design factor with full external evacuation and burst force equal to a mud gradient of:	9.2 ppg	



Casing Program: Minis (13 3/8" x 9 5/8" x 5 1/2")

Open Hole Size (Inches)	Casing Depth; From (ft)	Casing Setting Depth (ft) MD	Casing Setting Depth (ft) TVD	Casing Size (inches)	Casing Weight (lb/ft)	Casing Grade	Thread	Condition	Anticipated Mud Weight (ppg)	Burst (psi)	Burst SF (1.125)	Collapse (psi)	Collapse SF (1.125)	Tension Joint (klbs)	Air Weight (lbs)	Tension Joint SF (1.8)	Tension Body (klbs)	Air Weight (lbs)	Tension Body SF (1.8)
Surface																			
17.5"	0'	1,500'	1,500'	13 3/8"	54.5	J-55	BTC	New	8.4	2730	4.17	1130	1.72	909,000	81,750	11.12	853,000	81,750	10.43
Intermediate																			
12.25"	0'	5,400'	5,400'	9 5/8"	40	J-55	LTC	New	10.2	3950	1.38	2570	1.35	520,000	216,000	2.41	630,000	216,000	2.92
Production																			
8.75"	0'	18,970'	11,445'	5 1/2"	17	P-110	BTC	New	9.2	10640	1.94	7480	1.37	568,000	194,565	2.92	546,000	194,565	2.81

**Casing Design Criteria and Casing Loading Assumptions:**

Surface

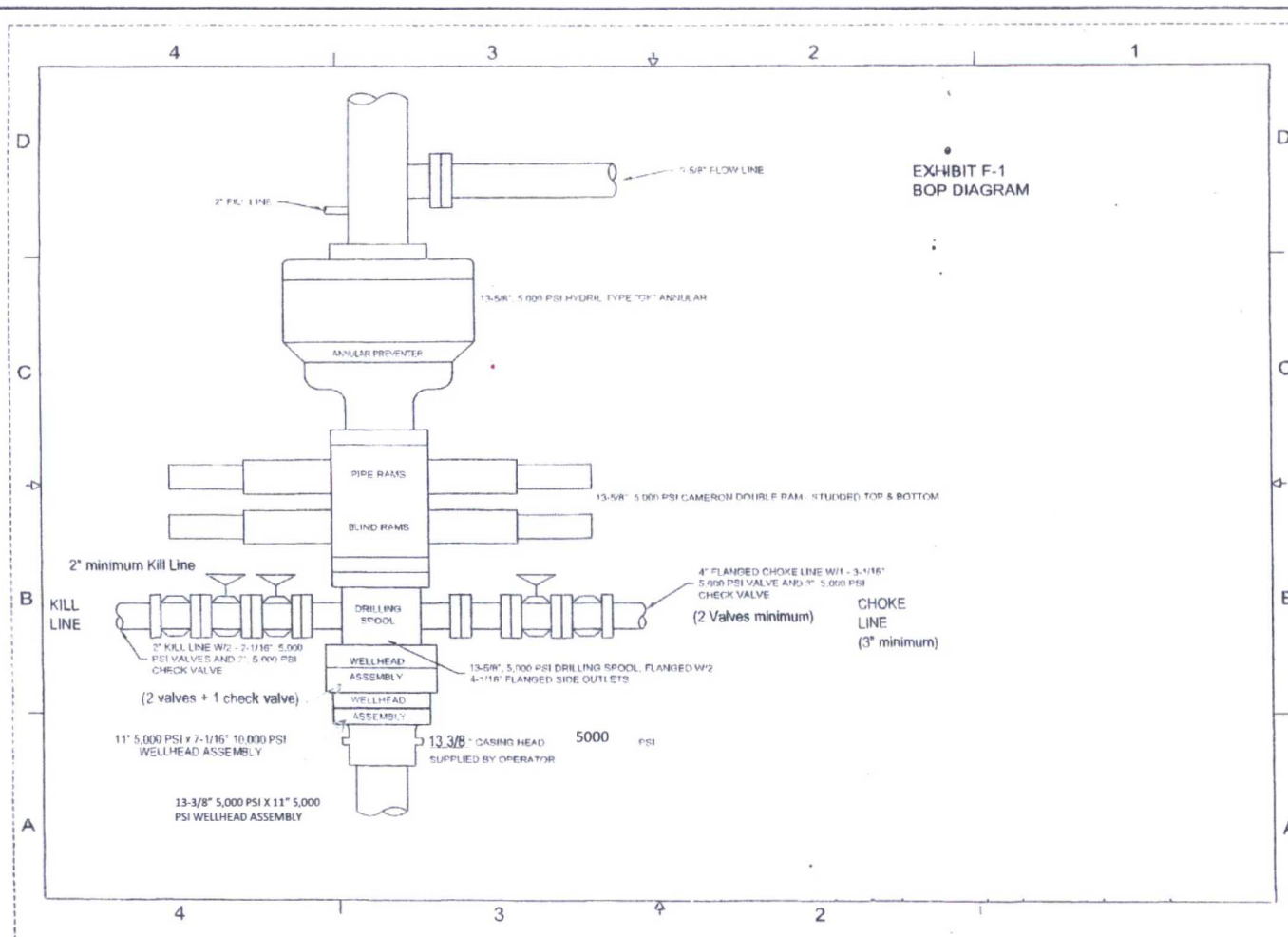
Tension A 1.8 design factor with effects of buoyancy with a fluid equal to a mud weight of: 8.4 ppg  
Collapse A 1.125 design factor with full internal evacuation and collapse force equal to a mud gradient of: 8.4 ppg  
Burst A 1.125 design factor with full external evacuation and burst force equal to a mud gradient of: 8.4 ppg

Intermediate

Tension A 1.8 design factor with effects of buoyancy with a fluid equal to a mud weight of: 10.2 ppg  
Collapse A 1.125 design factor with 1/3 TVD internal evacuation and collapse force equal to a mud gradient of: 10.2 ppg  
Burst A 1.125 design factor with full external evacuation and burst force equal to a mud gradient of: 10.2 ppg

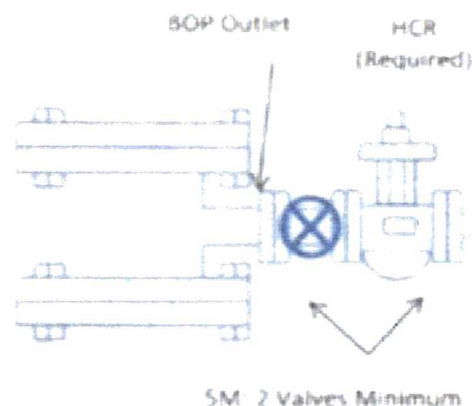
Production

Tension A 1.8 design factor with effects of buoyancy with a fluid equal to a mud weight of: 9.2 ppg  
Collapse A 1.125 design factor with full internal evacuation and collapse force equal to a mud gradient of: 9.2 ppg  
Burst A 1.125 design factor with full external evacuation and burst force equal to a mud gradient of: 9.2 ppg





Choke Line  
 5M System, 3" Minimum  
 OPTIONAL 4" Flex Hose may be  
 used if approved in APD



## Drilling Operations Choke Manifold 5M Service

