

DISTRICT I
1625 N. French Dr., Hobbs, NM 88240
Phone: (575) 393-6161 Fax: (575) 393-0720

DISTRICT II
511 S. First St., Artesia, NM 88210
Phone: (575) 748-1283 Fax: (575) 748-9720

DISTRICT III
1000 Rio Brazos Road, Aztec, NM 87410
Phone: (505) 334-6178 Fax: (505) 334-6170

DISTRICT IV
1220 S. St. Francis Dr., Santa Fe, NM 87505
Phone: (505) 476-3460 Fax: (505) 476-3462

State of New Mexico
Energy, Minerals & Natural Resources Department
OIL CONSERVATION DIVISION
1220 South St. Francis Dr.
Santa Fe, New Mexico 87505

HOBBS OCD
MAY 23 2018
RECEIVED

Form C-102
Revised August 1, 2011
Submit one copy to appropriate
District Office
□ AMENDED REPORT

WELL LOCATION AND ACREAGE DEDICATION PLAT

API Number 70-025-44820	Pool Code 97899	Pool Name WC-025 G-CL 53533 (M), BOLE SPRING
Property Code 315311	Property Name OUTRIDER FEDERAL	Well Number 5H
OGRID No. 005380	Operator Name XTO ENERGY	Elevation 3528'

Surface Location

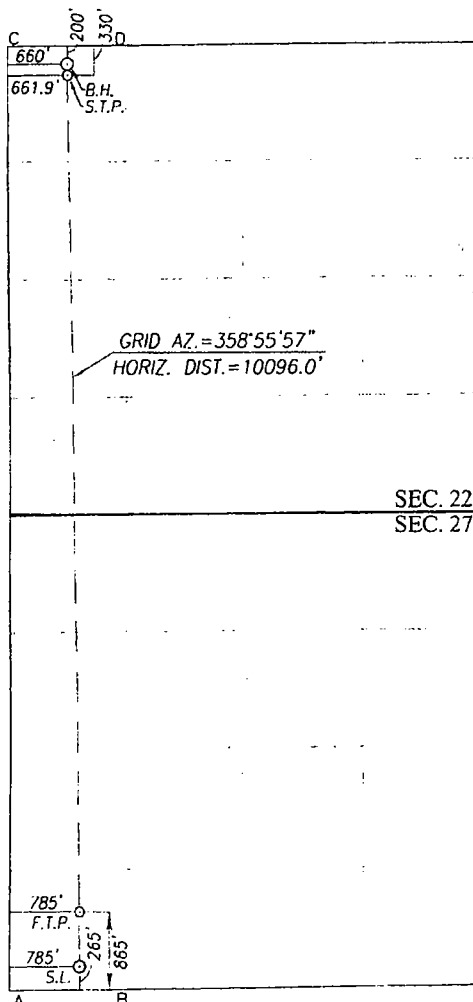
UL or lot No.	Section	Township	Range	Lot Idn	Feet from the	North/South line	Feet from the	East/West line	County
M	27	24-S	32-E		265	SOUTH	785	WEST	LEA

Bottom Hole Location If Different From Surface

UL or lot No.	Section	Township	Range	Lot Idn	Feet from the	North/South line	Feet from the	East/West line	County
D	22	24-S	32-E		200	NORTH	660	WEST	LEA

Dedicated Acres 3.20	Joint or Infill	Consolidation Code	Order No.
--------------------------------	-----------------	--------------------	-----------

NO ALLOWABLE WILL BE ASSIGNED TO THIS COMPLETION UNTIL ALL INTERESTS HAVE BEEN CONSOLIDATED OR A NON-STANDARD UNIT HAS BEEN APPROVED BY THE DIVISION



SCALE: 1"=2000'

GEODETIC COORDINATES NAD 27 NME BOTTOM HOLE LOCATION Y=440617.0 N X=705642.6 E LAT.=32.209625° N LONG.=103.668448° W	GEODETIC COORDINATES NAD 83 NME BOTTOM HOLE LOCATION Y=440675.7 N X=746827.0 E LAT.=32.209749° N LONG.=103.668928° W
SECOND TAKE POINT NAD 27 NME Y=440487.0 N X=705645.1 E LAT.=32.209267° N LONG.=103.668443° W	SECOND TAKE POINT NAD 83 NME Y=440545.7 N X=746829.5 E LAT.=32.209391° N LONG.=103.668922° W

CORNER COORDINATES TABLE
NAD 27 NME

A - Y=430252.4 N, X=705047.2 E
B - Y=430265.4 N, X=706367.3 E
C - Y=440810.1 N, X=704981.8 E
D - Y=440823.8 N, X=706303.8 E

CORNER COORDINATES TABLE
NAD 83 NME

A - Y=430310.9 N, X=746232.0 E
B - Y=430323.9 N, X=747552.1 E
C - Y=440868.8 N, X=746166.2 E
D - Y=440882.5 N, X=747488.3 E

GEODETIC COORDINATES
NAD 27 NME
FIRST TAKE POINT
Y=431124.9 N
X=705826.2 E
LAT.=32.183530° N
LONG.=103.668044° W

GEODETIC COORDINATES
NAD 83 NME
FIRST TAKE POINT
Y=431183.4 N
X=747011.0 E
LAT.=32.183654° N
LONG.=103.668523° W

SURFACE LOCATION
NAD 27 NME
Y=430525.1 N
X=705830.2 E
LAT.=32.181881° N
LONG.=103.668043° W

SURFACE LOCATION
NAD 83 NME
Y=430583.6 N
X=747015.0 E
LAT.=32.182005° N
LONG.=103.668522° W

OPERATOR CERTIFICATION

I hereby certify that the information herein is true and complete to the best of my knowledge and belief, and that this organization either owns a working interest or unleased mineral interest in the land including the proposed bottom hole location or has a right to drill this well at this location pursuant to a contract with an owner of such mineral or working interest, or to a voluntary pooling agreement or a compulsory pooling order heretofore entered by the division.

Stephanie Rabadue 12-29-17
Signature Date
Stephanie Rabadue
Printed Name
Stephanie - rabadue @
E-mail Address *xtoenergy.com*

SURVEYOR CERTIFICATION

I hereby certify that the well location shown on this plat was plotted from field notes of actual surveys made by me or under my supervision, and that the same is true and correct to the best of my belief.

SEPTEMBER 16, 2016

Date of Survey
Signature & Seal of Professional Surveyor:
Ronald J. Eidson 9/15/2016
Certificate Number *12641* Gary G. Eidson
Ronald J. Eidson 5239

ACK REL W.O. 14111235 JWSC W.O. 16.11 0683