

HOBBS OCD
MAY 23 2018
RECEIVED

DISTRICT I
 1625 N. French Dr., Hobbs, NM 88240
 Phone: (575) 393-6161 Fax: (575) 393-0720
DISTRICT II
 811 S. First St., Artesia, NM 88210
 Phone: (575) 748-1283 Fax: (575) 748-9720
DISTRICT III
 1000 Rio Brazos Road, Aztec, NM 87410
 Phone: (505) 334-6178 Fax: (505) 334-6170
DISTRICT IV
 1220 S. St. Francis Dr., Santa Fe, NM 87505
 Phone: (505) 476-3460 Fax: (505) 476-3462

State of New Mexico
 Energy, Minerals & Natural Resources Department
OIL CONSERVATION DIVISION
 1220 South St. Francis Dr.
 Santa Fe, New Mexico 87505

Form C-102
 Revised August 1, 2011
 Submit one copy to appropriate
 District Office

☐ AMENDED REPORT

WELL LOCATION AND ACREAGE DEDICATION PLAT

API Number 30-024-44818	Pool Code 97899	Pool Name INC-025 G1-06 52523 NEM, Bone Spring
Property Code 315311	Property Name OUTRIDER FEDERAL	Well Number 2H
OGRID No. 005380	Operator Name XTO ENERGY	Elevation 3526'

Surface Location

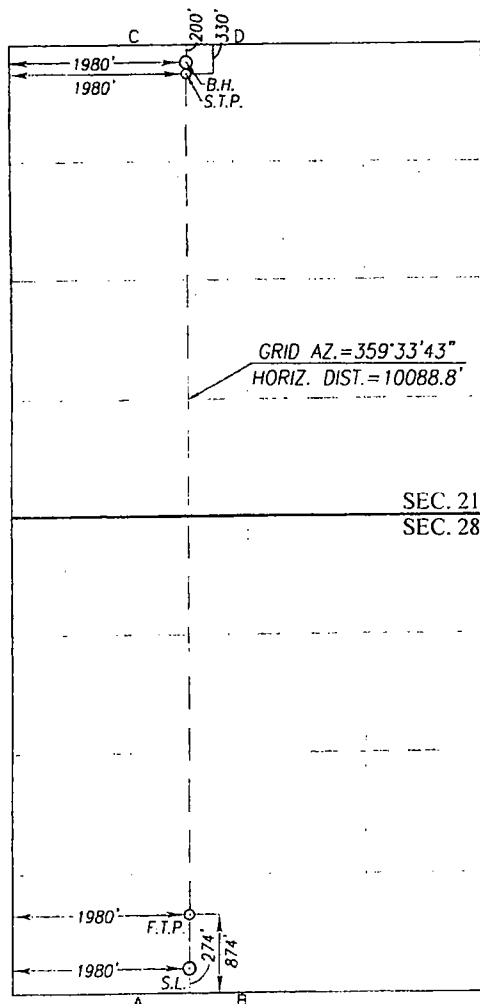
UL or lot No.	Section	Township	Range	Lot Idn	Feet from the	North/South line	Feet from the	East/West line	County
N	28	24-S	32-E		274	SOUTH	1980	WEST	LEA

Bottom Hole Location if Different From Surface

UL or lot No.	Section	Township	Range	Lot Idn	Feet from the	North/South line	Feet from the	East/West line	County
D	21	24-S	32-E		200	NORTH	1980	WEST	LEA

Dedicated Acres 320	Joint or Infill	Consolidation Code	Order No.
-------------------------------	-----------------	--------------------	-----------

NO ALLOWABLE WILL BE ASSIGNED TO THIS COMPLETION UNTIL ALL INTERESTS HAVE BEEN CONSOLIDATED OR A NON-STANDARD UNIT HAS BEEN APPROVED BY THE DIVISION



SCALE: 1"=2000'	
GEODETTIC COORDINATES NAD 27 NME BOTTOM HOLE LOCATION Y=440581.9 N X=701659.2 E LAT.=32.209595° N LONG.=103.681327° W	GEODETTIC COORDINATES NAD 83 NME BOTTOM HOLE LOCATION Y=440640.6 N X=742843.6 E LAT.=32.209719° N LONG.=103.681807° W
SECOND TAKE POINT NAD 27 NME Y=440451.9 N X=701660.1 E LAT.=32.209238° N LONG.=103.681327° W	SECOND TAKE POINT NAD 83 NME Y=440510.6 N X=742844.6 E LAT.=32.209362° N LONG.=103.681807° W
CORNER COORDINATES TABLE NAD 27 NME A - Y=430214.1 N, X=701079.4 E B - Y=430229.6 N, X=702400.3 E C - Y=440776.6 N, X=701005.5 E D - Y=440787.3 N, X=702333.1 E	
CORNER COORDINATES TABLE NAD 83 NME A - Y=430272.5 N, X=742264.2 E B - Y=430288.1 N, X=743585.2 E C - Y=440835.3 N, X=742189.9 E D - Y=440846.0 N, X=743517.5 E	
GEODETTIC COORDINATES NAD 27 NME FIRST TAKE POINT Y=431095.6 N X=701731.3 E LAT.=32.183518° N LONG.=103.681280° W	GEODETTIC COORDINATES NAD 83 NME FIRST TAKE POINT Y=431154.1 N X=742916.1 E LAT.=32.183642° N LONG.=103.681759° W
SURFACE LOCATION NAD 27 NME Y=430495.8 N X=701735.9 E LAT.=32.181869° N LONG.=103.681277° W	SURFACE LOCATION NAD 83 NME Y=430554.2 N X=742920.7 E LAT.=32.181993° N LONG.=103.681756° W

OPERATOR CERTIFICATION

I hereby certify that the information herein is true and complete to the best of my knowledge and belief, and that this organization either owns a working interest or unleased mineral interest in the land including the proposed bottom hole location or has a right to drill this well at this location pursuant to a contract with an owner of such mineral or working interest, or to a voluntary pooling agreement or a compulsory pooling order heretofore entered by the division.

Stephanie Rabidue 12-09-17
 Signature Date

Stephanie Rabidue
 Printed Name

Stephanie.Rabidue@xtoenergy.com
 E-mail Address

SURVEYOR CERTIFICATION

I hereby certify that the well location shown on this plat was plotted from field notes of actual surveys made by me or under my supervision, and that the same is true and correct to the best of my belief.

SEPTEMBER 12, 2016

Date of Survey
 Signature & Seal of Professional Surveyor:

Ronald J. Eidson 9/29/2016
 Certificate Number Gary G. Eidson 12641
 Ronald J. Eidson 3239

ACK REL W.O.:14111232 JWSC W.O 16.11.0680