

UNITED STATES
DEPARTMENT OF THE INTERIOR
BUREAU OF LAND MANAGEMENT

OCD Hobbs

FORM APPROVED
OMB NO. 1004-0137
Expires: January 31, 2018**SUNDRY NOTICES AND REPORTS ON WELLS**
*Do not use this form for proposals to drill or to re-enter an abandoned well. Use form 3160-3 (APD) for such proposals.*5. Lease Serial No.
NMNM114984

6. Indian, Allottee or Tribe Name

SUBMIT IN TRIPLICATE - Other instructions on page 2 MAY 29 2018

7. If Unit or CA/Agreement, Name and/or No.

1. Type of Well

☒ Oil Well ☐ Gas Well ☐ Other

RECEIVED

8. Well Name and No.
CHILI PARLOR 17 FEDERAL 2H

2. Name of Operator

BC OPERATING INCORPORATED

Contact: JENNIFER VAN CUREN

E-Mail: jvancuren@marathonoil.co

9. API Well No.

30-025-43137-00-S1

3a. Address

3303 VETERANS AIRPARK LANE SUITE 6101
MIDLAND TX 79710

3b. Phone No. (include area code)

Ph: 713-296-2500

10. Field and Pool or Exploratory Area
RED TANK-BONE SPRING

4. Location of Well (Footage, Sec., T., R., M., or Survey Description)

Sec 8 T22S R33E SESE 240FSL 360FEL

11. County or Parish, State

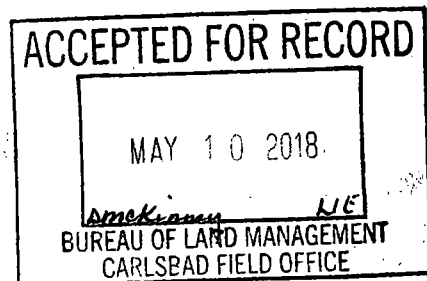
LEA COUNTY, NM

12. CHECK THE APPROPRIATE BOX(ES) TO INDICATE NATURE OF NOTICE, REPORT, OR OTHER DATA

TYPE OF SUBMISSION	TYPE OF ACTION			
<input checked="" type="checkbox"/> Notice of Intent	<input type="checkbox"/> Acidize	<input type="checkbox"/> Deepen	<input type="checkbox"/> Production (Start/Resume)	<input type="checkbox"/> Water Shut-Off
<input type="checkbox"/> Subsequent Report	<input type="checkbox"/> Alter Casing	<input type="checkbox"/> Hydraulic Fracturing	<input type="checkbox"/> Reclamation	<input type="checkbox"/> Well Integrity
<input type="checkbox"/> Final Abandonment Notice	<input type="checkbox"/> Casing Repair	<input type="checkbox"/> New Construction	<input type="checkbox"/> Recomplete	<input checked="" type="checkbox"/> Other
	<input type="checkbox"/> Change Plans	<input type="checkbox"/> Plug and Abandon	<input type="checkbox"/> Temporarily Abandon	Site Facility Diagram/Security Plan
	<input type="checkbox"/> Convert to Injection	<input type="checkbox"/> Plug Back	<input type="checkbox"/> Water Disposal	

13. Describe Proposed or Completed Operation: Clearly state all pertinent details, including estimated starting date of any proposed work and approximate duration thereof. If the proposal is to deepen directionally or recompleat horizontally, give subsurface locations and measured and true vertical depths of all pertinent markers and zones. Attach the Bond under which the work will be performed or provide the Bond No. on file with BLM/BIA. Required subsequent reports must be filed within 30 days following completion of the involved operations. If the operation results in a multiple completion or recompleat in a new interval, a Form 3160-4 must be filed once testing has been completed. Final Abandonment Notices must be filed only after all requirements, including reclamation, have been completed and the operator has determined that the site is ready for final inspection.

Marathon Oil Permian LLC is submitting the facility diagram for this location.



14. I hereby certify that the foregoing is true and correct.

**Electronic Submission #413713 verified by the BLM Well Information System
For BC OPERATING INCORPORATED, sent to the Hobbs
Committed to AFMSS for processing by PRISCILLA PEREZ on 05/08/2018 (18PP1007SE)**

Name (Printed/Typed) JENNIFER VAN CUREN

Title SR. REGULATORY COMPLIANCE REP

Signature (Electronic Submission)

Date 05/04/2018

THIS SPACE FOR FEDERAL OR STATE OFFICE USE

Approved By

Title

Date

Conditions of approval, if any, are attached. Approval of this notice does not warrant or certify that the applicant holds legal or equitable title to those rights in the subject lease which would entitle the applicant to conduct operations thereon.

Office

Title 18 U.S.C. Section 1001 and Title 43 U.S.C. Section 1212, make it a crime for any person knowingly and willfully to make to any department or agency of the United States any false, fictitious or fraudulent statements or representations as to any matter within its jurisdiction.

(Instructions on page 2)

** BLM REVISED ** BLM REVISED ** BLM REVISED ** BLM REVISED ** BLM REVISED **

Accepted for Record Only

MVB/ocd

5/31/2018

SN: T164362635
SN: T164362629

FROM
CHILI PARLOR 17 FEDERAL 3H
API 30-025-43138

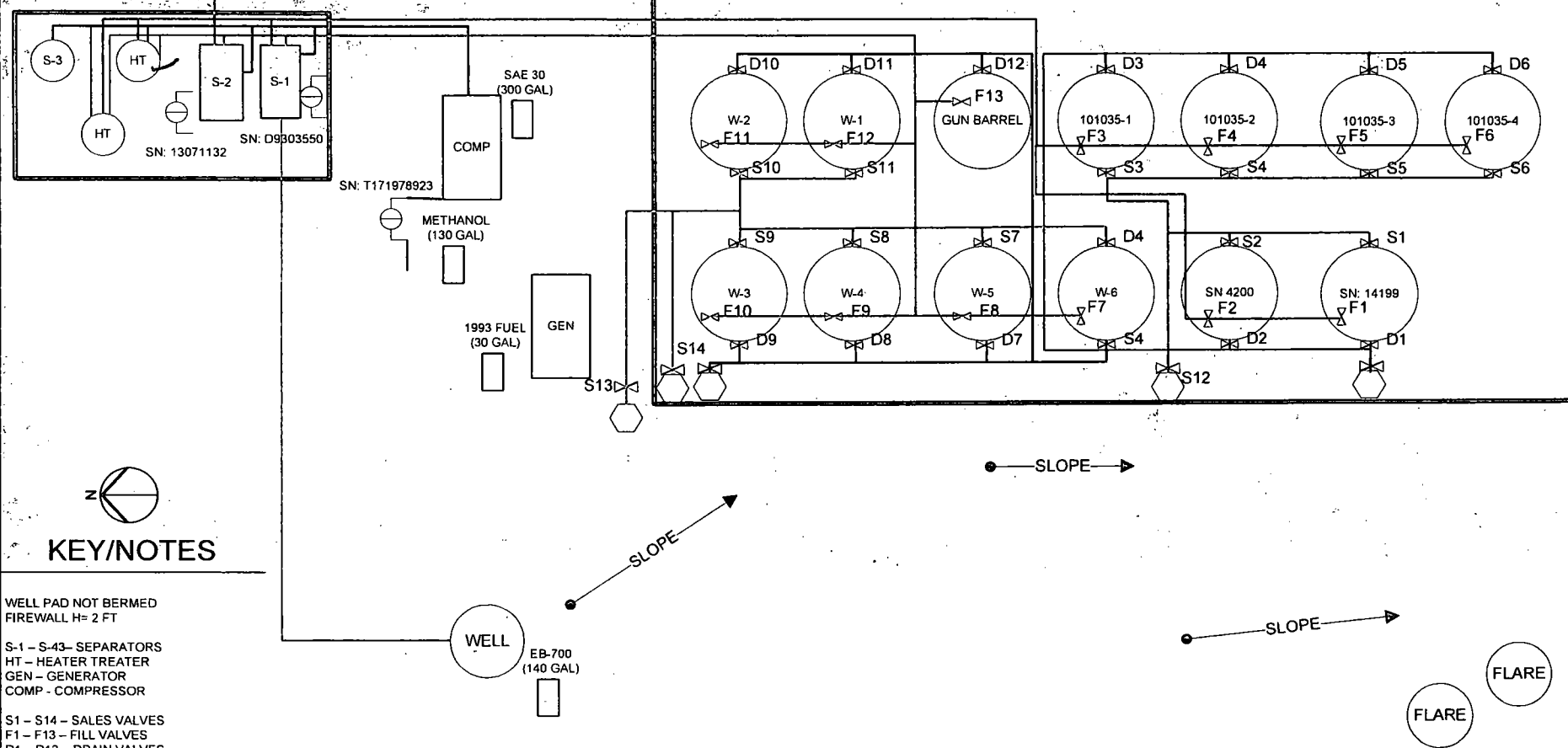


FIGURE TITLE
CHILI PARLOR 17 FEDERAL 2H

API 30-025-43137 LEASE NMNM114984 CA #

OPERATOR **MARATHON OIL PERMIAN, LLC**
5555 SAN FELIPE ST, HOUSTON, TX 77056

LOCATION **SESE-8-T22S-R33E** LAT 32.39971673
LEA COUNTY, NM 240 FSL & 360 FEL LONG -103.58819381

DATE	MARCH 2018
SCALE	NOT TO SCALE
DRAWN BY	AC
APPROVED BY	JVC



Valve Positioning in the Production Phase

Production to SN 14199

F1 is open

S1-S6 are sealed closed

D1-D6 are sealed closed

F2, F3, F4, F5, F6 are sealed closed

Production to SN 4200

F2 is open

S1-S6 are sealed closed

D1-D6 are sealed closed

F1, F3, F4, F5, F6 are sealed closed

Production to 101035-1

F3 is open

S1-S6 are sealed closed

D1-D6 are sealed closed

F1, F2, F4, F5, F6 are sealed closed

Production to 101035-2

F4 is open

S1-S6 are sealed closed

D1-D6 are sealed closed

F1, F2, F3, F5, F6 are sealed closed

Production to 101035-3

F5 is open

S1-S6 are sealed closed

D1-D6 are sealed closed

F1, F2, F3, F4, F6 are sealed closed

Production to 101035-4

F4 is open

S1-S6 are sealed closed

D1-D6 are sealed closed

F1, F2, F3, F4, F5 are sealed closed

Valve Positioning in the Sales Phase

Sales from SN 14199

S1 is open

F1 is sealed closed

F2, F3, F4, F5, F6 are open/closed

S2, S3, S4, S5, S6 are sealed closed

D1-D6 are sealed closed

Sales from SN 4200

S2 is open

F2 is sealed closed

F1, F3, F4, F5, F6 are open/closed

S1, S3, S4, S5, S6 are sealed closed

D1-D6 are sealed closed

Sales from 101035-1

S3 is open

F3 is sealed closed

F1, F2, F4, F5, F6 are open/closed

S1, S2, S4, S5, S6 are sealed closed

D1-D6 are sealed closed

Sales from 101035-2

S4 is open

F4 is sealed closed

F1, F2, F3, F5, F6 are open/closed

S1, S2, S3, S5, S6 are sealed closed

D1-D6 are sealed closed

Sales from 101035-3

S5 is open

F5 is sealed closed

F1, F2, F3, F4, F6 are open/closed

S1, S2, S3, S4, S6 are sealed closed

D1-D6 are sealed closed

Sales from 101035-4

S6 is open

F6 is sealed closed

F1, F2, F3, F4, F5 are open/closed

S1, S2, S3, S4, S5 are sealed closed

D1-D6 are sealed closed

Valve Positioning in the Drain Phase

Sales from SN 14199

D1 is open

F1 is sealed closed

F2, F3, F4, F5, F6 are open/closed

S1-S6 are sealed closed

D2, D3, D4, D5, D6 are sealed closed

Sales from SN 4200

D2 is open

F2 is sealed closed

F1, F3, F4, F5, F6 are open/closed

S1-S6 are sealed closed

D1, D3, D4, D5, D6 are sealed closed

Sales from 101035-1

D3 is open

F3 is sealed closed

F1, F2, F4, F5, F6 are open/closed

S1-S6 are sealed closed

D1, D2, D4, D5, D6 are sealed closed

Sales from 101035-2

D4 is open

F4 is sealed closed

F1, F2, F3, F5, F6 are open/closed

S1-S6 are sealed closed

D1, D2, D3, D5, D6 are sealed closed

Sales from 101035-3

D5 is open

F5 is sealed closed

F1, F2, F3, F4, F6 are open/closed

S1-S6 are sealed closed

D1, D2, D3, D4, D6 are sealed closed

Sales from 101035-4

D6 is open

F6 is sealed closed

F1, F2, F3, F4, F5 are open/closed

S1-S6 are sealed closed

D1, D2, D3, D4, D5 are sealed closed



FIGURE TITLE

CHILI PARLOR 17 FEDERAL 2H

API

30-025-43137

LEASE

NMNM114984

CA #

OPERATOR

**MARATHON OIL PERMIAN, LLC
5555 SAN FELIPE ST, HOUSTON, TX 77056**

LOCATION

LEA COUNTY, NM

SESE-8-T22S-R33E

240 FSL & 360 FEL

LAT

32.39971673

LONG

-103.58819381

DATE MARCH 2018

SCALE NOT TO SCALE

DRAWN BY AC

APPROVED BY JVC