

District I
1625 N. French Dr., Hobbs, NM 88240
Phone: (575) 393-6161 Fax: (575) 393-0720
District II
811 S. First St., Artesia, NM 88210
Phone: (575) 748-1283 Fax: (575) 748-9720
District III
1000 Rio Brazos Road, Aztec, NM 87410
Phone: (505) 334-6178 Fax: (505) 334-6170
District IV
1220 S. St. Francis Dr., Santa Fe, NM 87505
Phone: (505) 476-3460 Fax: (505) 476-3462

State of New Mexico
Energy, Minerals & Natural Resources Department
OIL CONSERVATION DIVISION
1220 South St. Francis Dr.
Santa Fe, NM 87505

Form C-102
Revised August 1, 2011
Submit one copy to appropriate
District Office

☐ AMENDED REPORT

WELL LOCATION AND ACREAGE DEDICATION PLAT

¹ API Number 70-025	² Pool Code 77869	³ Pool Name SWD; Devonian - JURIAN
⁴ Property Code	⁵ Property Name FROGWATER SWD	⁶ Well Number 1
⁷ OGRID No. 13837	⁸ Operator Name MACK ENERGY CORPORATION	⁹ Elevation 4258.2

¹⁰ Surface Location

UL or lot no.	Section	Township	Range	Lot Idn	Feet from the	North/South line	Feet from the	East/West line	County
F	8	16 S	33 E		1980	NORTH	1984	WEST	LEA

¹¹ Bottom Hole Location If Different From Surface

UL or lot no.	Section	Township	Range	Lot Idn	Feet from the	North/South line	Feet from the	East/ West line	County

¹² Dedicated Acres 40	¹³ Joint or Infill	¹⁴ Consolidation Code	¹⁵ Order No.
--	-------------------------------	----------------------------------	-------------------------

No allowable will be assigned to this completion until all interests have been consolidated or a non-standard unit has been approved by the division.

<p>N89°25'00"E 2639.58 FT</p> <p>NW CORNER SEC. 8 LAT. = 32.9434092°N LONG. = 103.6941099°W NMSP EAST (FT) N = 707542.26 E = 737435.09</p>		<p>N89°26'12"E 2641.68 FT</p> <p>N/4 CORNER SEC. 8 LAT. = 32.9434388°N LONG. = 103.6855081°W NMSP EAST (FT) N = 707569.12 E = 740073.90</p>		<p>NE CORNER SEC. 8 LAT. = 32.9434652°N LONG. = 103.6768994°W NMSP EAST (FT) N = 707595.09 E = 742714.81</p>	
<p>N00°24'05"W 2640.57 FT</p>		<p>1980'</p>		<p>S00°23'55"E 2638.80 FT</p>	
<p>W/4 CORNER SEC. 8 LAT. = 32.9361535°N LONG. = 103.6941018°W NMSP EAST (FT) N = 704902.39 E = 737453.59</p>		<p>NOTE: LATITUDE AND LONGITUDE COORDINATES ARE SHOWN USING THE NORTH AMERICAN DATUM OF 1983 (NAD83). LISTED NEW MEXICO STATE PLANE EAST COORDINATES ARE GRID (NAD83). BASIS OF BEARING AND DISTANCES USED ARE NEW MEXICO STATE PLANE EAST COORDINATES MODIFIED TO THE SURFACE. VERTICAL DATUM NAVD88.</p>		<p>E/4 CORNER SEC. 8 LAT. = 32.9362143°N LONG. = 103.6768932°W NMSP EAST (FT) N = 704956.99 E = 742733.16</p>	
<p>N00°22'12"W 2640.44 FT</p>		<p>1984'</p>		<p>S00°24'20"E 2641.40 FT</p>	
<p>SW CORNER SEC. 8 LAT. = 32.9288980°N LONG. = 103.6940985°W NMSP EAST (FT) N = 702262.64 E = 737470.64</p>		<p>S/4 CORNER SEC. 8 LAT. = 32.9289281°N LONG. = 103.6854935°W NMSP EAST (FT) N = 702289.72 E = 740110.84</p>		<p>SE CORNER SEC. 8 LAT. = 32.9289563°N LONG. = 103.6768858°W NMSP EAST (FT) N = 702316.30 E = 742751.86</p>	
<p>S89°24'45"W 2640.97 FT</p>		<p>1980'</p>		<p>S89°25'24"W 2641.80 FT</p>	

FROGWATER SWD 1
ELEV. = 4258.2'
LAT. = 32.9379908°N (NAD83)
LONG. = 103.6876385°W
NMSP EAST (FT)
N = 705582.97
E = 739432.49

SURFACE LOCATION

17 OPERATOR CERTIFICATION
I hereby certify that the information contained herein is true and complete to the best of my knowledge and belief, and that this organization either owns a working interest or unleased mineral interest in the land including the proposed bottom hole location or has a right to drill this well at this location pursuant to a contract with an owner of such a mineral or working interest, or to a voluntary pooling agreement or a compulsory pooling order heretofore entered by the division.

Deana Weaver 5.10.18
Signature Date

Deana Weaver
Printed Name

dweaver@mec.com
E-mail Address

18 SURVEYOR CERTIFICATION
I hereby certify that the well location shown on this plat was plotted from field notes of actual surveys made by me or under my supervision, and that the same is true and correct to the best of my belief.

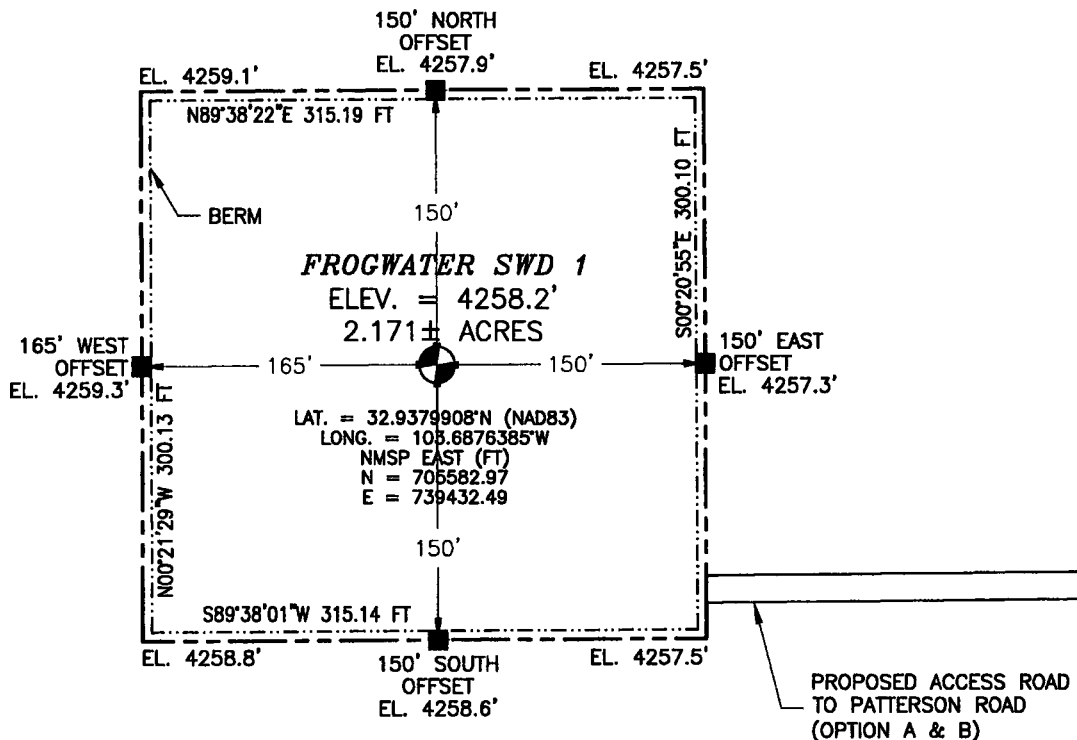
FILMON F. JARAMILLO
APRIL 25 2018
Date of Survey

Filmon F. Jaramillo
Signature and Seal of Professional Surveyor

Certificate Number FILMON F. JARAMILLO, PLS 12797
SURVEY NO. 6175

SECTION 8, TOWNSHIP 16 SOUTH, RANGE 33 EAST, N.M.P.M.
LEA COUNTY, STATE OF NEW MEXICO
SITE MAP

NOTE: LATITUDE AND LONGITUDE COORDINATES ARE SHOWN USING THE NORTH AMERICAN DATUM OF 1983 (NAD83). LISTED NEW MEXICO STATE PLANE EAST COORDINATES ARE GRID (NAD83). BASIS OF BEARING AND DISTANCES USED ARE NEW MEXICO STATE PLANE EAST COORDINATES MODIFIED TO THE SURFACE



0 10 50 100 200

SCALE 1" = 100'

DIRECTIONS TO LOCATION

OPTION A FROM THE INTERSECTION OF STATE HIGHWAY 82 & PATTERSON ROAD GO NORTHWEST ON PATTERSON ROAD FOR APPROX. 2.85 MILES, FOLLOW ROAD SURVEY WEST APPROX. 0.77 OF A MILE TO 10' CALICHE LEASE ROAD, CONTINUE WEST ON 10' CALICHE LEASE ROAD FOR APPROX. 0.34 OF A MILE TO SOUTHEAST PAD CORNER.

OPTION B FROM THE INTERSECTION OF STATE HIGHWAY 82 & PATTERSON ROAD GO NORTHWEST ON PATTERSON ROAD FOR APPROX. 2.1 MILES, GO WEST ON 2-TRACK ROAD (NORTH OF FENCE LINE) FOR APPROX. 1.3 MILES TO 10' CALICHE LEASE ROAD, GO NORTH ON 10' CALICHE LEASE ROAD FOR APPROX. 0.6 OF A MILE, CONTINUE WEST ON 10' CALICHE LEASE ROAD FOR APPROX. 0.34 OF A MILE TO SOUTHEAST PAD CORNER.

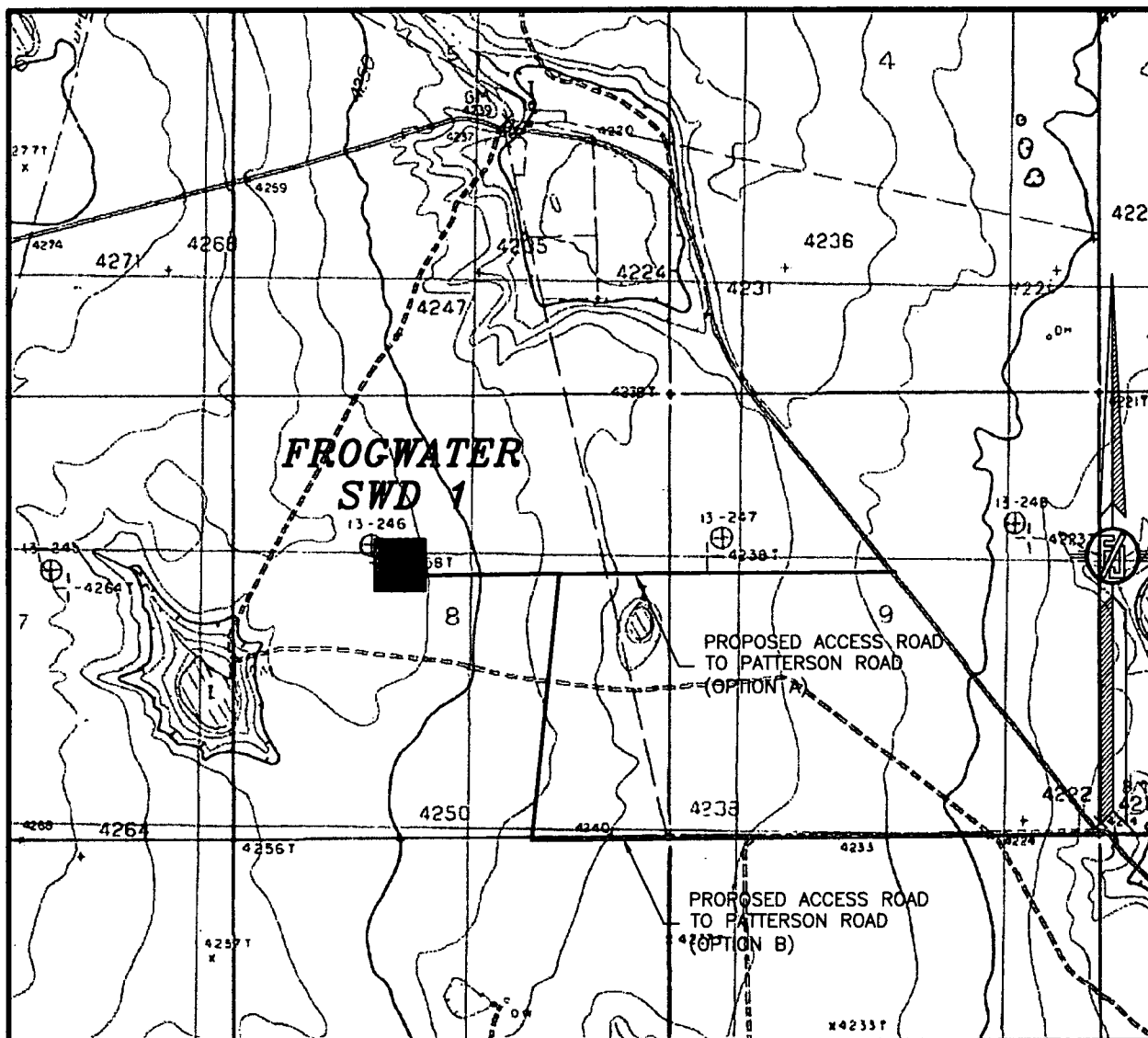
MACK ENERGY CORPORATION
FROGWATER SWD 1
LOCATED 1980 FT. FROM THE NORTH LINE
AND 1984 FT. FROM THE WEST LINE OF
SECTION 8, TOWNSHIP 16 SOUTH,
RANGE 33 EAST, N.M.P.M.
LEA COUNTY, STATE OF NEW MEXICO

APRIL 25, 2018

SURVEY NO. 6175

MADRON SURVEYING, INC. 301 SOUTH CANAL (575) 234-3341 **CARLSBAD, NEW MEXICO**

SECTION 8, TOWNSHIP 16 SOUTH, RANGE 33 EAST, N.M.P.M.
LEA COUNTY, STATE OF NEW MEXICO
LOCATION VERIFICATION MAP



USGS QUAD MAP:
BUCKEYE NW

NOT TO SCALE

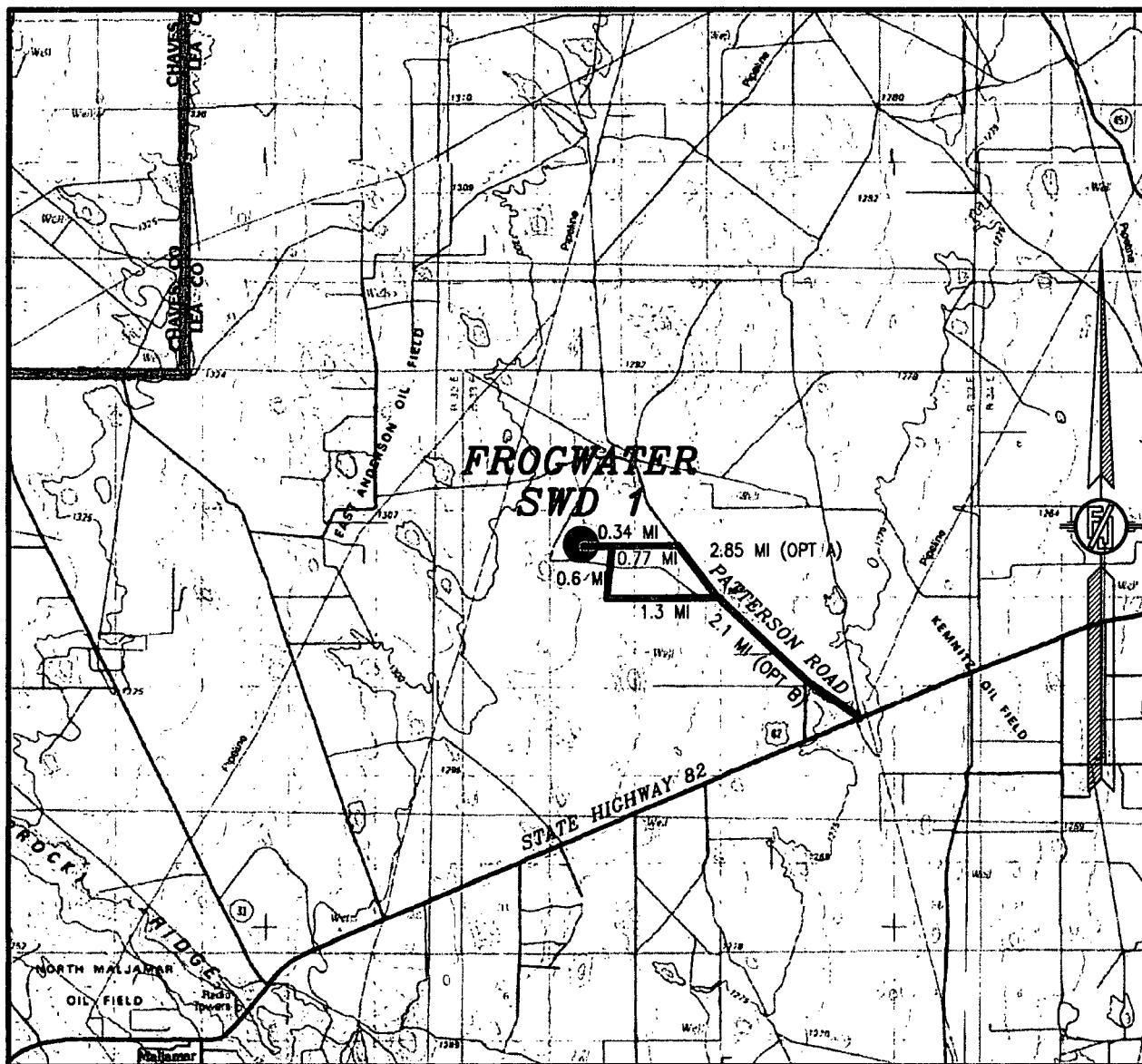
MACK ENERGY CORPORATION
FROGWATER SWD 1
LOCATED 1980 FT. FROM THE NORTH LINE
AND 1984 FT. FROM THE WEST LINE OF
SECTION 8, TOWNSHIP 16 SOUTH,
RANGE 33 EAST, N.M.P.M.
LEA COUNTY, STATE OF NEW MEXICO

APRIL 25, 2018

SURVEY NO. 6175

MADRON SURVEYING, INC. 301 SOUTH CANAL (575) 234-3341 CARLSBAD, NEW MEXICO

SECTION 8, TOWNSHIP 16 SOUTH, RANGE 33 EAST, N.M.P.M.
LEA COUNTY, STATE OF NEW MEXICO
VICINITY MAP



DISTANCES IN MILES

NOT TO SCALE

MACK ENERGY CORPORATION
FROGWATER SWD 1

LOCATED 1980 FT. FROM THE NORTH LINE
AND 1984 FT. FROM THE WEST LINE OF
SECTION 8, TOWNSHIP 16 SOUTH,
RANGE 33 EAST, N.M.P.M.
LEA COUNTY, STATE OF NEW MEXICO

APRIL 25, 2018

SURVEY NO. 6175

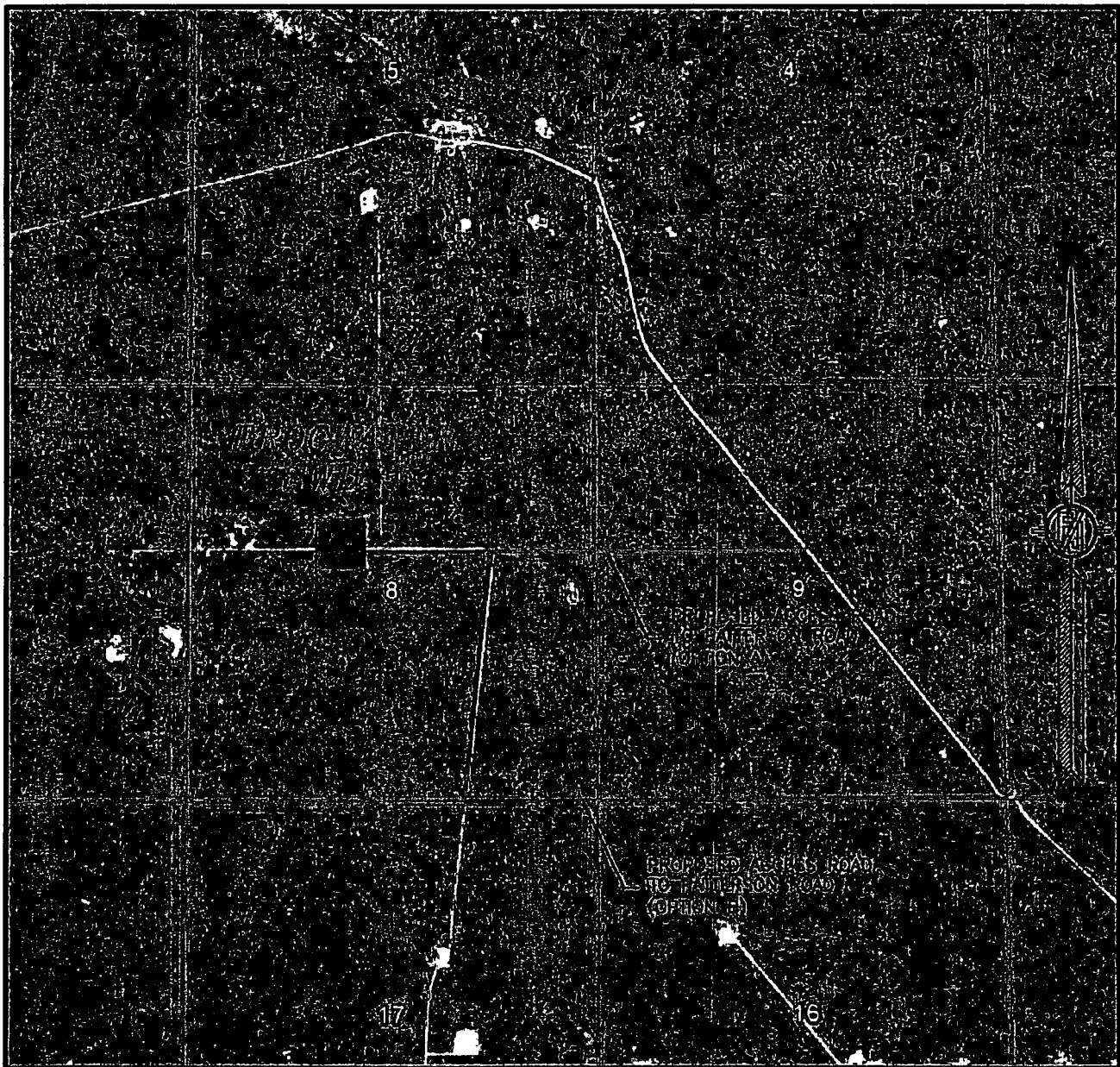
MADRON SURVEYING, INC. 301 SOUTH CANAL (575) 234-3341 CARLSBAD, NEW MEXICO

DIRECTIONS TO LOCATION

OPTION A FROM THE INTERSECTION OF STATE HIGHWAY 82 & PATTERSON ROAD GO NORTHWEST ON PATTERSON ROAD FOR APPROX. 2.85 MILES, FOLLOW ROAD SURVEY WEST APPROX. 0.77 OF A MILE TO 10' CALICHE LEASE ROAD, CONTINUE WEST ON 10' CALICHE LEASE ROAD FOR APPROX. 0.34 OF A MILE TO SOUTHEAST PAD CORNER.

OPTION B FROM THE INTERSECTION OF STATE HIGHWAY 82 & PATTERSON ROAD GO NORTHWEST ON PATTERSON ROAD FOR APPROX. 2.1 MILES, GO WEST ON 2-TRACK ROAD (NORTH OF FENCE LINE) FOR APPROX. 1.3 MILES TO 10' CALICHE LEASE ROAD, GO NORTH ON 10' CALICHE LEASE ROAD FOR APPROX. 0.6 OF A MILE, CONTINUE WEST ON 10' CALICHE LEASE ROAD FOR APPROX. 0.34 OF A MILE TO SOUTHEAST PAD CORNER.

SECTION 8, TOWNSHIP 16 SOUTH, RANGE 33 EAST, N.M.P.M.
LEA COUNTY, STATE OF NEW MEXICO
AERIAL PHOTO



NOT TO SCALE
AERIAL PHOTO:
GOOGLE EARTH
NOVEMBER 2017

MACK ENERGY CORPORATION
FROGWATER SWD 1
LOCATED 1980 FT. FROM THE NORTH LINE
AND 1984 FT. FROM THE WEST LINE OF
SECTION 8, TOWNSHIP 16 SOUTH,
RANGE 33 EAST, N.M.P.M.
LEA COUNTY, STATE OF NEW MEXICO

APRIL 25, 2018

SURVEY NO. 6175

MADRON SURVEYING, INC. 301 SOUTH CANAL (575) 234-3341 CARLSBAD, NEW MEXICO

8, TOWNSHIP 16 SOUTH, RANGE 33 EAST, N.M.P.M.
LEA COUNTY, STATE OF NEW MEXICO
ACCESS AERIAL ROUTE MAP



NOT TO SCALE
AERIAL PHOTO:
GOOGLE EARTH
NOVEMBER 2017

MACK ENERGY CORPORATION
FROGWATER SWD 1
LOCATED 1980 FT. FROM THE NORTH LINE
AND 1984 FT. FROM THE WEST LINE OF
SECTION 8, TOWNSHIP 16 SOUTH,
RANGE 33 EAST, N.M.P.M.
LEA COUNTY, STATE OF NEW MEXICO

APRIL 25, 2018

SURVEY NO. 6175

MADRON SURVEYING, INC. 301 SOUTH CANAL (575) 234-3341 **CARLSBAD, NEW MEXICO**