

UNITED STATES  
DEPARTMENT OF THE INTERIOR  
BUREAU OF LAND MANAGEMENTFORM APPROVED  
OMB NO. 1004-0137  
Expires: January 31, 2018**SUNDRY NOTICES AND REPORTS ON WELLS**  
Do not use this form for proposals to drill or to re-enter an  
abandoned well. Use form 3160-3 (APD) for such proposals.5. Lease Serial No.  
STATE

6. Indian Allottee or Tribe Name

7. If Unit or CA/Agreement, Name and/or No.  
73885U4940

SUBMIT IN TRIPLICATE - Other instructions on page 2

1. Type of Well

☒ Oil Well ☐ Gas Well ☐ Other8. Well Name and No.  
EMSU 101

2. Name of Operator

XTO ENERGY INCORPORATED

Contact: PATTY R URIAS

E-Mail: PATTY\_URIAS@XTOENERGY.COM

9. API Well No.

30-025-30220-00-S1

3a. Address

6401 HOLIDAY HILL ROAD BLDG 5  
MIDLAND, TX 79707

3b. Phone No. (include area code)

Ph: 432-620-4318

Fx: 432-618-3530

10. Field and Pool or Exploratory Area

EUNICE MONUMENT-GRAYBURG-SA

4. Location of Well (Footage, Sec., T., R., M., or Survey Description)

Sec 30 T20S R37E NENW 660FNL 1980FWL  
32.549570 N Lat, 103.292884 W Lon

11. County or Parish, State

LEA COUNTY, NM

## 12. CHECK THE APPROPRIATE BOX(ES) TO INDICATE NATURE OF NOTICE, REPORT, OR OTHER DATA

TYPE OF SUBMISSION	TYPE OF ACTION			
<input checked="" type="checkbox"/> Notice of Intent	<input type="checkbox"/> Acidize	<input type="checkbox"/> Deepen	<input type="checkbox"/> Production (Start/Resume)	<input type="checkbox"/> Water Shut-Off
<input type="checkbox"/> Subsequent Report	<input type="checkbox"/> Alter Casing	<input type="checkbox"/> Hydraulic Fracturing	<input type="checkbox"/> Reclamation	<input type="checkbox"/> Well Integrity
<input type="checkbox"/> Final Abandonment Notice	<input type="checkbox"/> Casing Repair	<input type="checkbox"/> New Construction	<input type="checkbox"/> Recomplete	<input checked="" type="checkbox"/> Other
	<input type="checkbox"/> Change Plans	<input type="checkbox"/> Plug and Abandon	<input type="checkbox"/> Temporarily Abandon	Venting and/or Flaring
	<input type="checkbox"/> Convert to Injection	<input type="checkbox"/> Plug Back	<input type="checkbox"/> Water Disposal	

13. Describe Proposed or Completed Operation: Clearly state all pertinent details, including estimated starting date of any proposed work and approximate duration thereof. If the proposal is to deepen directionally or recompleat horizontally, give subsurface locations and measured and true vertical depths of all pertinent markers and zones. Attach the Bond under which the work will be performed or provide the Bond No. on file with BLM/BIA. Required subsequent reports must be filed within 30 days following completion of the involved operations. If the operation results in a multiple completion or recompleat in a new interval, a Form 3160-4 must be filed once testing has been completed. Final Abandonment Notices must be filed only after all requirements, including reclamation, have been completed and the operator has determined that the site is ready for final inspection.

## REQUEST FOR FLARE METERING EXCEPTION

## EMSU SAT #1

Because there is no flare meter at the EMSU SAT #1, XTO Energy Inc. is requesting the BLM acknowledge that its method for estimating volumes of flared production from EMSU SAT #1 complies with NTL-4A and, therefore, that no flare meter is required at the EMSU SAT #1.

XTO estimates the flare start date based on a comparison of the metered sales volume to the daily average sales volumes. Specifically, XTO divides the theoretical flare volume (derived by the difference between the average sales volumes and the actual sales volume for a given duration) by the average daily sales volume and then multiplies that figure by 24 to determine an estimated

14. I hereby certify that the foregoing is true and correct.

Electronic Submission #419321 verified by the BLM Well Information System  
For XTO ENERGY INCORPORATED, sent to the Hobbs  
Committed to AFMSS for processing by PRISCILLA PEREZ on 05/23/2018 (18PP1070SE)

Name (Printed/Typed) PATTY R URIAS

Title REGULATORY ANALYST

Signature (Electronic Submission)

Date 05/08/2018

## THIS SPACE FOR FEDERAL OR STATE OFFICE USE

Approved By

/s/ Jonathon Shepard

Title

Petroleum Engineer  
Carlsbad Field Office

JUN 07 2018

Conditions of approval, if any, are attached. Approval of this notice does not warrant or certify that the applicant holds legal or equitable title to those rights in the subject lease which would entitle the applicant to conduct operations thereon.

Office

Title 18 U.S.C. Section 1001 and Title 43 U.S.C. Section 1212, make it a crime for any person knowingly and willfully to make to any department or agency of the United States any false, fictitious or fraudulent statements or representations as to any matter within its jurisdiction.

(Instructions on page 2)

\*\* BLM REVISED \*\* BLM REVISED \*\* BLM REVISED \*\* BLM REVISED \*\* BLM REVISED \*\*

MAB/OCD  
6/14/2018

**Additional data for EC transaction #419321 that would not fit on the form**

**32. Additional remarks, continued**

number of hours.

The sales meter is the first meter for the production (there is no separate production meter). XTO determines the flared volumes by comparing the sales volume during the period of flaring to the average sales volume. Specifically, XTO subtracts the actual sales volume from an average of sales volume (both figures taken from the sales meter). XTO will use a rolling 12 month production average as requested by the BLM for future sundries, as we as revise our prior sundries and OGORs based on the 12 month average.

EMSU SAT 1

**ASSOCIATED WELLS:**

EUNICE MONUMENT SO. UNIT 101 GRBG/SA API #30-025-30220  
EUNICE MONUMENT SO. UNIT 103 GRBG/SA API #30-025-04331 FEDERAL  
EUNICE MONUMENT SO. UNIT 104 GRBG/SA API #30-025-04321  
EUNICE MONUMENT SO. UNIT 105 GRBG/SA API #30-025-04335  
EUNICE MONUMENT SO. UNIT 108 GRBG/SA API #30-025-04330 FEDERAL  
EUNICE MONUMENT SO. UNIT 109 GRBG/SA API #30-025-04324  
EUNICE MONUMENT SO. UNIT 110 GRBG/SA API #30-025-06284  
EUNICE MONUMENT SO. UNIT 111 GRBG/SA API #30-025-06283  
EUNICE MONUMENT SO. UNIT 112 GRBG/SA API #30-025-06282  
EUNICE MONUMENT SO. UNIT 115 GRBG/SA API #30-025-06295  
EUNICE MONUMENT SO. UNIT 116 GRBG/SA API #30-025-06290  
EUNICE MONUMENT SO. UNIT 117 GRBG/SA API #30-025-29396  
EUNICE MONUMENT SO. UNIT 122 GRBG/SA API #30-025-30277 FEDERAL  
EUNICE MONUMENT SO. UNIT 123 GRBG/SA API #30-025-29957 FEDERAL  
EUNICE MONUMENT SO. UNIT 125 GRBG/SA API #30-025-04322

# Eunice Monument South Unit Sat #1

Month/Year	Avg Daily total	Rolling 12 Mo Hourly Avg	Rolling 12 Mo Daily Avg				
2008							
January	55	2					
February	46	2					
March	39	2					
April	45	2					
May	46	2					
June	31	1					
July	37	2					
August	34	1					
September	37	2					
October	41	2					
November	43	2					
December	43	2					
12 Month Total	497						
2009							
January	41	2	40	Total Rolling 12 Months February-08	to	January-09	
February	43	2	40	Total Rolling 12 Months March-08	to	February-09	
March	43	2	40	Total Rolling 12 Months April-08	to	March-09	
April	42	2	40	Total Rolling 12 Months May-08	to	April-09	
May	41	2	40	Total Rolling 12 Months June-08	to	May-09	
June	42	2	41	Total Rolling 12 Months July-08	to	June-09	
July	41	2	41	Total Rolling 12 Months August-08	to	July-09	
August	42	2	42	Total Rolling 12 Months September-08	to	August-09	
September	42	2	42	Total Rolling 12 Months October-08	to	September-09	
October	38	2	42	Total Rolling 12 Months November-08	to	October-09	
November	41	2	42	Total Rolling 12 Months December-08	to	November-09	
December	41	2	41	Total Rolling 12 Months January-09	to	December-09	
12 Month Total	497						
2010							
January	41	2	41	Total Rolling 12 Months February-09	to	January-10	
February	45	2	42	Total Rolling 12 Months March-09	to	February-10	
March	32	2	41	Total Rolling 12 Months April-09	to	March-10	
April	37	2	40	Total Rolling 12 Months May-09	to	April-10	
May	42	2	40	Total Rolling 12 Months June-09	to	May-10	
June	42	2	40	Total Rolling 12 Months July-09	to	June-10	
July	42	2	40	Total Rolling 12 Months August-09	to	July-10	
August	42	2	40	Total Rolling 12 Months September-09	to	August-10	
September	67	2	43	Total Rolling 12 Months October-09	to	September-10	
October	48	2	43	Total Rolling 12 Months November-09	to	October-10	
November	46	2	44	Total Rolling 12 Months December-09	to	November-10	
December	39	2	44	Total Rolling 12 Months January-10	to	December-10	
12 Month Total	523						

# Eunice Monument South Unit Sat #1

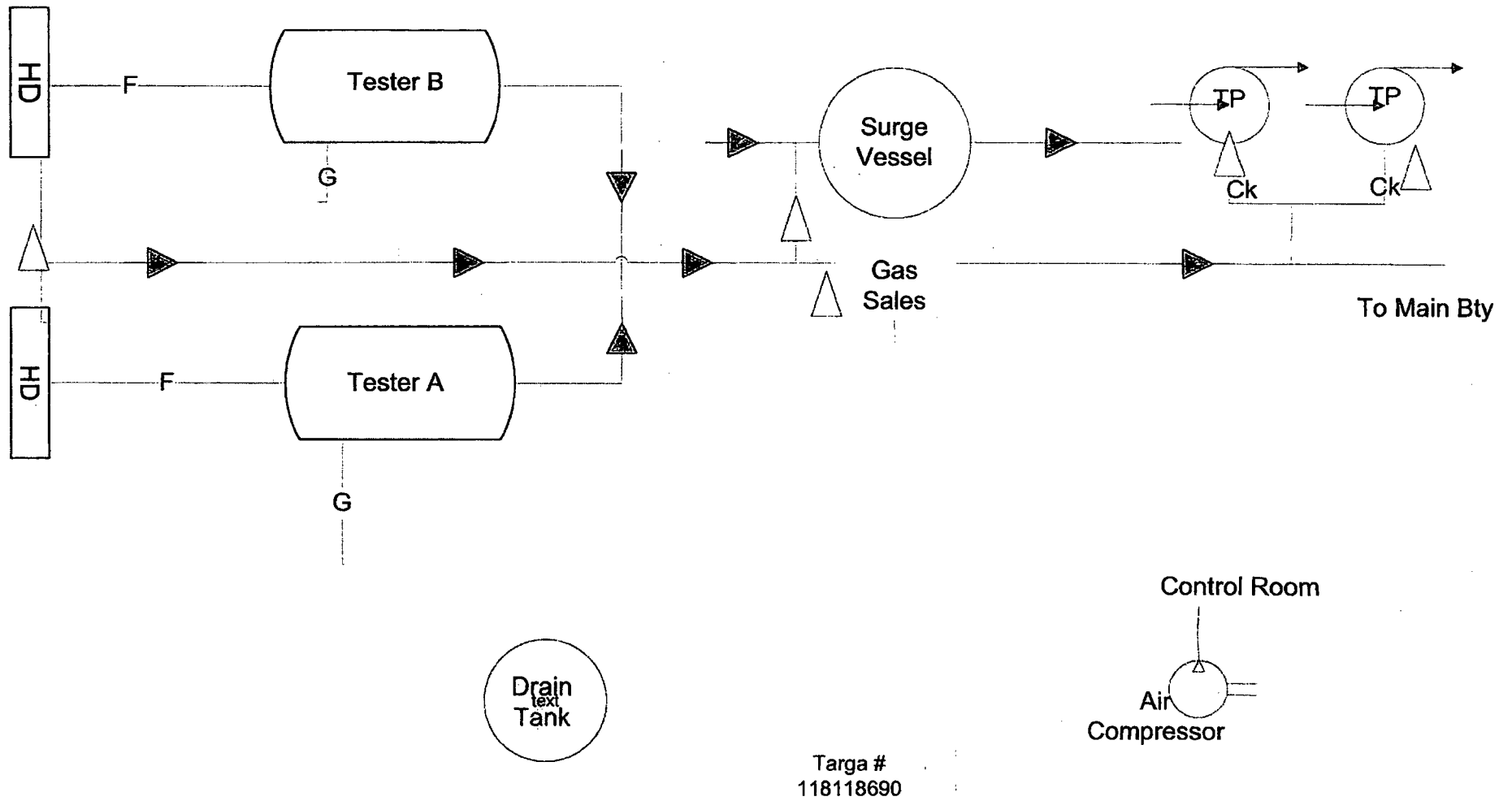
Month/Year	Avg Daily total	Rolling 12 Mo Hourly Avg	Rolling 12 Mo Daily Avg				
<b>2011</b>							
January	45	2	44	Total Rolling 12 Months	February-10	to	January-11
February	41	2	44	Total Rolling 12 Months	March-10	to	February-11
March	50	2	45	Total Rolling 12 Months	April-10	to	March-11
April	46	2	46	Total Rolling 12 Months	May-10	to	April-11
May	46	2	46	Total Rolling 12 Months	June-10	to	May-11
June	55	2	47	Total Rolling 12 Months	July-10	to	June-11
July	51	2	48	Total Rolling 12 Months	August-10	to	July-11
August	46	2	48	Total Rolling 12 Months	September-10	to	August-11
September	40	2	46	Total Rolling 12 Months	October-10	to	September-11
October	32	2	45	Total Rolling 12 Months	November-10	to	October-11
November	34	2	44	Total Rolling 12 Months	December-10	to	November-11
December	46	2	44	Total Rolling 12 Months	January-11	to	December-11
<b>12 Month Total</b>		<b>532</b>					
<b>2012</b>							
January	44	2	44	Total Rolling 12 Months	February-11	to	January-12
February	50	2	45	Total Rolling 12 Months	March-11	to	February-12
March	54	2	45	Total Rolling 12 Months	April-11	to	March-12
April	54	2	46	Total Rolling 12 Months	May-11	to	April-12
May	45	2	46	Total Rolling 12 Months	June-11	to	May-12
June	51	2	46	Total Rolling 12 Months	July-11	to	June-12
July	49	2	45	Total Rolling 12 Months	August-11	to	July-12
August	36	2	45	Total Rolling 12 Months	September-11	to	August-12
September	41	2	45	Total Rolling 12 Months	October-11	to	September-12
October	40	2	45	Total Rolling 12 Months	November-11	to	October-12
November	38	2	46	Total Rolling 12 Months	December-11	to	November-12
December	45	2	46	Total Rolling 12 Months	January-12	to	December-12
<b>12 Month Total</b>		<b>547</b>					
<b>2013</b>							
January	44	2	41	Total Rolling 12 Months	February-12	to	January-13
February	46	2	41	Total Rolling 12 Months	March-12	to	February-13
March	47	2	40	Total Rolling 12 Months	April-12	to	March-13
April	43	2	40	Total Rolling 12 Months	May-12	to	April-13
May	43	2	39	Total Rolling 12 Months	June-12	to	May-13
June	42	2	39	Total Rolling 12 Months	July-12	to	June-13
July	45	2	40	Total Rolling 12 Months	August-12	to	July-13
August	45	2	40	Total Rolling 12 Months	September-12	to	August-13
September	42	2	40	Total Rolling 12 Months	October-12	to	September-13
October	32	2	40	Total Rolling 12 Months	November-12	to	October-13
November	28	2	38	Total Rolling 12 Months	December-12	to	November-13
December	35	2	41	Total Rolling 12 Months	January-13	to	December-13
<b>12 Month Total</b>		<b>492</b>					

# Eunice Monument South Unit Sat #1

Month/Year	Avg Daily total	Rolling 12 Mo Hourly Avg	Rolling 12 Mo Daily Avg				
<b>2014</b>							
January	38	2	37	Total Rolling 12 Months	February-13	to	January-14
February	38	1	36	Total Rolling 12 Months	March-13	to	February-14
March	37	1	35	Total Rolling 12 Months	April-13	to	March-14
April	43	1	35	Total Rolling 12 Months	May-13	to	April-14
May	38	1	35	Total Rolling 12 Months	June-13	to	May-14
June	38	1	35	Total Rolling 12 Months	July-13	to	June-14
July	41	1	34	Total Rolling 12 Months	August-13	to	July-14
August	43	1	34	Total Rolling 12 Months	September-13	to	August-14
September	41	1	35	Total Rolling 12 Months	October-13	to	September-14
October	37	1	36	Total Rolling 12 Months	November-13	to	October-14
November	34	1	36	Total Rolling 12 Months	December-13	to	November-14
December	32	2	38	Total Rolling 12 Months	January-14	to	December-14
<b>12 Month Total</b>		<b>460</b>					
<b>2015</b>							
January	33	1	35	Total Rolling 12 Months	February-14	to	January-15
February	35	1	35	Total Rolling 12 Months	March-14	to	February-15
March	35	1	34	Total Rolling 12 Months	April-14	to	March-15
April	38	1	34	Total Rolling 12 Months	May-14	to	April-15
May	35	1	34	Total Rolling 12 Months	June-14	to	May-15
June	33	1	33	Total Rolling 12 Months	July-14	to	June-15
July	43	1	33	Total Rolling 12 Months	August-14	to	July-15
August	44	1	33	Total Rolling 12 Months	September-14	to	August-15
September	31	1	33	Total Rolling 12 Months	October-14	to	September-15
October	32	1	33	Total Rolling 12 Months	November-14	to	October-15
November	33	1	33	Total Rolling 12 Months	December-14	to	November-15
December	30	1	35	Total Rolling 12 Months	January-15	to	December-15
<b>12 Month Total</b>		<b>422</b>					
<b>2016</b>							
January	33	1	32	Total Rolling 12 Months	February-15	to	January-16
February	34	1	32	Total Rolling 12 Months	March-15	to	February-16
March	32	1	32	Total Rolling 12 Months	April-15	to	March-16
April	33	1	32	Total Rolling 12 Months	May-15	to	April-16
May	31	1	31	Total Rolling 12 Months	June-15	to	May-16
June	34	1	31	Total Rolling 12 Months	July-15	to	June-16
July	34	1	30	Total Rolling 12 Months	August-15	to	July-16
August	34	1	30	Total Rolling 12 Months	September-15	to	August-16
September	34	1	30	Total Rolling 12 Months	October-15	to	September-16
October	22	1	29	Total Rolling 12 Months	November-15	to	October-16
November	23	1	29	Total Rolling 12 Months	December-15	to	November-16
December	27	1	31	Total Rolling 12 Months	January-16	to	December-16
<b>12 Month Total</b>		<b>371</b>					

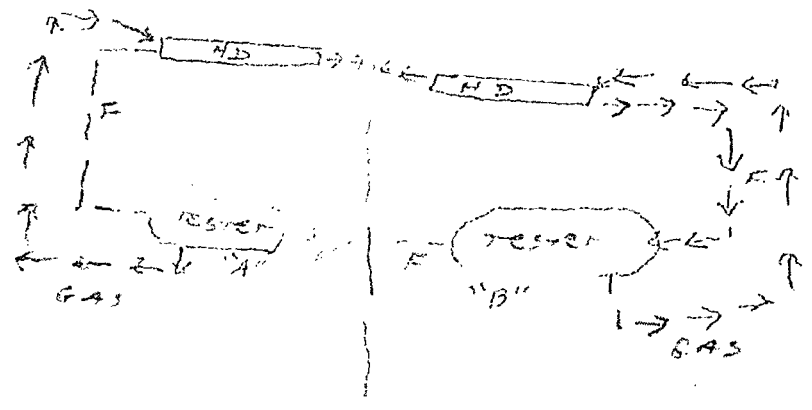
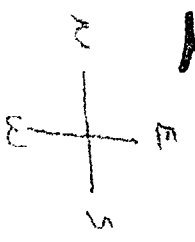
# Eunice Monument South Unit Sat #1

Month/Year	Avg Daily total	Rolling 12 Mo Hourly Avg	Rolling 12 Mo Daily Avg				
	<b>2017</b>						
January	26	1	28	Total Rolling 12 Months	February-16	to	January-17
February	24	1	27	Total Rolling 12 Months	March-16	to	February-17
March	24	1	26	Total Rolling 12 Months	April-16	to	March-17
April	0	1	24	Total Rolling 12 Months	May-16	to	April-17
May	0	0	0	Total Rolling 12 Months	June-16	to	May-17
June	0	0	0	Total Rolling 12 Months	July-16	to	June-17
July	0	0	0	Total Rolling 12 Months	August-16	to	July-17
August	0	0	0	Total Rolling 12 Months	September-16	to	August-17
September	0	0	0	Total Rolling 12 Months	October-16	to	September-17
October	0	0	0	Total Rolling 12 Months	November-16	to	October-17
November	0	0	0	Total Rolling 12 Months	December-16	to	November-17
December	0	0	0	Total Rolling 12 Months	January-17	to	December-17
<b>12 Month Total</b>		<b>74</b>					



# EMSU SAT. 2

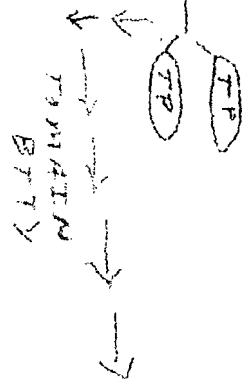
CONTROL ROOM



DRAIN TANK

TAREDA  
118112640

SYRGE VESSEL



GAS  
SALES

GAS COMP

TO FLARE  
@ EMSU #11 1/2 mile  
ALONG ROAD