

RECEIVED

District I
1625 N. French Dr., Hobbs, NM 88240
Phone: (575) 393-6161 Fax: (575) 393-0170
District II
811 S. First St., Artesia, NM 88210
Phone: (575) 748-1283 Fax: (575) 748-9720
District III
1000 Rio Brazos Road, Aztec, NM 87410
Phone: (505) 334-6178 Fax: (505) 334-6170
District IV
1220 S. St. Francis Dr., Santa Fe, NM 87505
Phone: (505) 476-3460 Fax: (505) 476-3462

State of New Mexico
Energy, Minerals & Natural Resources Department

MAY 21 2018

Form C-102

Revised August 1, 2011

Submit one copy to appropriate

District Office

MAY 23 2018

OIL CONSERVATION DIVISION

1220 South St. Francis Dr.

DISTRICT II-ARTESIA O.C.D.

Santa Fe, NM 87505

RECEIVED

☐ AMENDED REPORT

WELL LOCATION AND ACREAGE DEDICATION PLAT

¹ API Number 30-025-40342	² Pool Code 96660	³ Pool Name Berry, Bone Spring
⁴ Property Code 317292	⁵ Property Name REBEL 16/9 B20J STATE COM	
⁷ GRID NO. 14744	⁸ Operator Name MEWBOURNE OIL COMPANY	⁹ Elevation 3730'

¹⁰ Surface Location

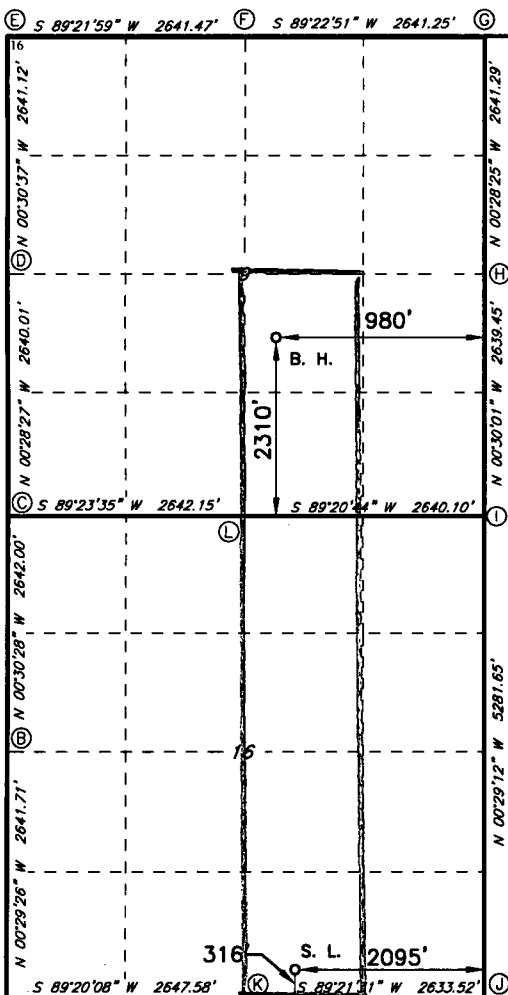
UL or lot no.	Section	Township	Range	Lot Idn	Feet from the	North/South line	Feet From the	East/West line	County
0	16	21S	34E		316	SOUTH	2095	EAST	LEA

¹¹ Bottom Hole Location If Different From Surface

UL or lot no.	Section	Township	Range	Lot Idn	Feet from the	North/South line	Feet from the	East/West line	County
J	9	21S	34E		2310	SOUTH	1980	EAST	LEA

¹² Dedicated Acres 240	¹³ Joint or Infill	¹⁴ Consolidation Code	¹⁵ Order No.
--------------------------------------	-------------------------------	----------------------------------	-------------------------

No allowable will be assigned to this completion until all interest have been consolidated or a non-standard unit has been approved by the division.



GEODETIC DATA
NAD 27 GRID - NM EAST
SURFACE LOCATION
N: 536640.9 - E: 765439.7

LAT: 32.47239488° N
LONG: 103.47263330° W

BOTTOM HOLE
N: 543915.8 - E: 765492.0

LAT: 32.49238922° N
LONG: 103.47227340° W

CORNER DATA
NAD 27 GRID - NM EAST

A: FOUND BRASS CAP "1918"
N: 536288.3 - E: 762256.7

B: FOUND BRASS CAP "1918"
N: 538929.4 - E: 762234.1

C: FOUND BRASS CAP "1918"
N: 541570.8 - E: 762210.7

D: FOUND BRASS CAP "1918"
N: 544210.3 - E: 762188.9

E: FOUND BRASS CAP "1918"
N: 546850.8 - E: 762165.4

F: FOUND BRASS CAP "1918"
N: 546880.0 - E: 764806.2

G: FOUND BRASS CAP "1918"
N: 546908.5 - E: 767446.8

H: FOUND BRASS CAP "1918"
N: 544267.8 - E: 767468.6

I: FOUND BRASS CAP "1918"
N: 541628.9 - E: 767491.7

J: FOUND BRASS CAP "1918"
N: 536348.5 - E: 767536.5

K: FOUND BRASS CAP "1918"
N: 536319.0 - E: 764903.7

L: FOUND BRASS CAP "1918"
N: 541598.8 - E: 764852.2

¹⁷ OPERATOR CERTIFICATION

I hereby certify that the information contained herein is true and complete to the best of my knowledge and belief, and that this organization either owns a working interest or unleased mineral interest in the land including the proposed bottom hole location or has a right to drill this well at this location pursuant to a contract with an owner of such a mineral or working interest, or to a voluntary pooling agreement or a compulsory pooling order heretofore entered by the division.

Signature: Jackie Lathan Date: 5/10/18

Printed Name: Jackie Lathan

E-mail Address

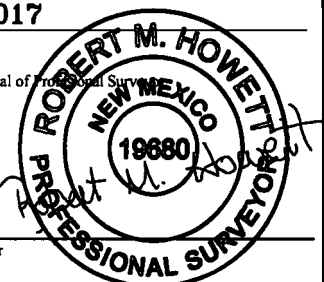
¹⁸ SURVEYOR CERTIFICATION

I hereby certify that the well location shown on this plat was plotted from field notes of actual surveys made by me or under my supervision, and that the same is true and correct to the best of my belief.

1-3-2017

Date of Survey

Signature and Seal of Professional Surveyor



19680
Certificate Number

RRC - Firm No.: TX 10193838 NM 4655451 - Job No.: LS1612421