

District I  
1625 N. French Dr., Hobbs, NM 88240  
Phone: (575) 393-6161 Fax: (575) 393-0720  
District II  
811 S. First St., Artesia, NM 88210  
Phone: (575) 748-1283 Fax: (575) 748-9720  
District III  
1000 Rio Grande Road, Artesia, NM 87410  
Phone: (505) 334-6178 Fax: (505) 334-6170  
District IV  
1220 S. St. Francis Dr., Santa Fe, NM 87505  
Phone: (505) 476-3460 Fax: (505) 476-3462

State of New Mexico  
Energy, Minerals & Natural Resources Department  
OIL CONSERVATION DIVISION  
1220 South St. Francis Dr.  
Santa Fe, NM 87505

Form C-102  
Revised August 1, 2011  
Submit one copy to appropriate  
District Office

☒ AMENDED REPORT  
(As-Drilled)

WELL LOCATION AND ACREAGE DEDICATION PLAT

|                                   |  |   |
|-----------------------------------|--|---|
| API Number<br><b>30-025-44161</b> | Pool Code<br><b>51687</b>                          | Pool Name<br><b>Red Tank; Bone Spring, East</b> |
| Property Code<br><b>319659</b>    | Property Name<br><b>RED TANK "30-31" STATE Com</b> | Well Number<br><b>24Y</b>                       |
| OGRID No.<br><b>116696</b>        | Operator Name<br><b>OXY USA INC.</b>               | Elevation<br><b>3660.1'</b>                     |

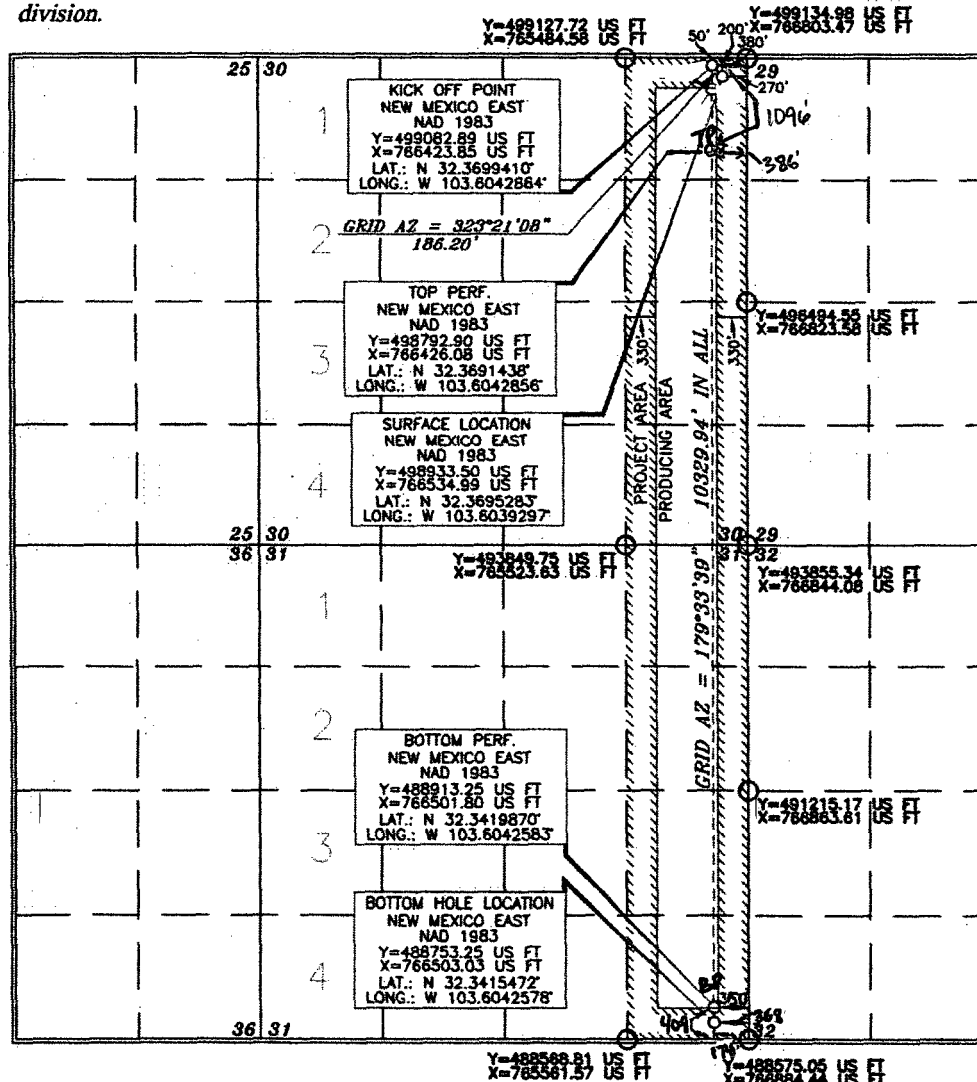
Surface Location

| UL or lot no. | Section | Township | Range             | Lot Id | Feet from the | North/South line | Feet from the | East/West line | County |
|---------------|---------|----------|-------------------|--------|---------------|------------------|---------------|----------------|--------|
| A             | 30      | 22 SOUTH | 33 EAST, N.M.P.M. |        | 200'          | NORTH            | 270'          | EAST           | LEA    |

Bottom Hole Location If Different From Surface

| UL or lot no.                 | Section                     | Township           | Range             | Lot Id  | Feet from the | North/South line | Feet from the | East/West line | County |
|-------------------------------|-----------------------------|--------------------|-------------------|---|---------------|------------------|---------------|----------------|--------|
| P                             | 31                          | 22 SOUTH           | 33 EAST, N.M.P.M. |   | 100'<br>139'  | SOUTH            | 300'<br>368'  | EAST           | LEA    |
| Dedicated Acres<br><b>320</b> | Joint or Infill<br><b>Y</b> | Consolidation Code | Order No.         | <b>BP- 409 FSL 350 FEL</b><br><b>TP- 1096 FNL 386 FEL</b> |               |                  |               |                |        |

No allowable will be assigned to this completion until all interests have been consolidated or a non-standard unit has been approved by the division.



OPERATOR CERTIFICATION

I hereby certify that the information contained herein is true and complete to the best of my knowledge and belief, and that this organization either owns a working interest or unleased mineral interest in the land including the proposed bottom hole location or has a right to drill this well at this location pursuant to a contract with an owner of such a mineral or working interest, or to a voluntary pooling agreement or a compulsory pooling order heretofore entered by the division.

*[Signature]* 1/16/18  
Signature  
Printed Name  
janalyn-mendiola@oxy.com  
E-mail Address

SURVEYOR CERTIFICATION

I hereby certify that the well location shown on this plat was plotted from the boundary and/or actual surveys made by me or under my supervision and that the same is true and correct to the best of my belief.

*[Signature]*  
Date of Survey  
Signature and Seal of Professional Land Surveyor  
Professional Land Surveyor

*[Signature]* 10/30/2017  
Certificate Number 15079