

DISTRICT I
1625 N. French Dr., Hobbs, NM 88240
Phone: (575) 393-6161 Fax: (575) 393-0720

DISTRICT II
811 S. First St., Artesia, NM 88210
Phone: (575) 745-1283 Fax: (575) 748-9720

DISTRICT III
1000 Rio Brazos Road, Aztec, NM 87410
Phone: (505) 334-6178 Fax: (505) 334-6170

DISTRICT IV
1220 S. St. Francis Dr., Santa Fe, NM 87505
Phone: (505) 476-3460 Fax: (505) 476-3462

State of New Mexico
Energy, Minerals & Natural Resources Department
OIL CONSERVATION DIVISION
1220 South St. Francis Dr.
Santa Fe, New Mexico 87505

HOBBS OCD
JUL 05 2018
RECEIVED

Form C-102
Revised August 1, 2011
Submit one copy to appropriate
District Office
DAMENDED REPORT

WELL LOCATION AND ACREAGE DEDICATION PLAT

API Number 30-025-44693	Pool Code 98265	Pool Name Ojo Chiso ; WOLFCAMP, SW
Property Code 316706	Property Name BELL LAKE UNIT NORTH	Well Number 401H
OGRID No. 12361	Operator Name KAISER-FRANCIS OIL COMPANY	Elevation 3518'

Surface Location

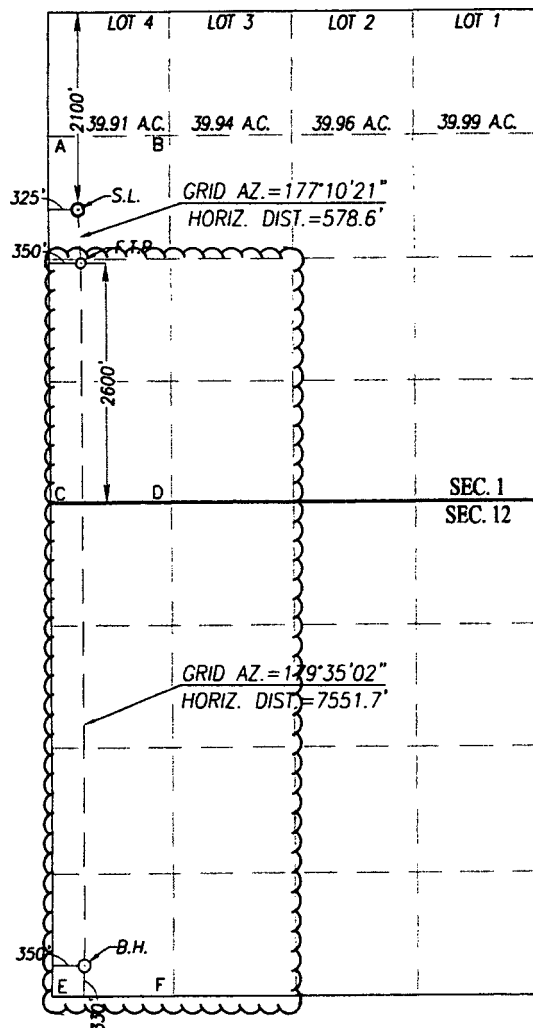
UL or lot No.	Section	Township	Range	Lot Idn	Feet from the	North/South line	Feet from the	East/West line	County
E	1	23-S	33-E		2100	NORTH	325	WEST	LEA

Bottom Hole Location If Different From Surface

UL or lot No.	Section	Township	Range	Lot Idn	Feet from the	North/South line	Feet from the	East/West line	County
M	12	23-S	33-E		330	SOUTH	350	WEST	LEA

Dedicated Acres 480	Joint or Infill	Consolidation Code	Order No.
------------------------	-----------------	--------------------	-----------

NO ALLOWABLE WILL BE ASSIGNED TO THIS COMPLETION UNTIL ALL INTERESTS HAVE BEEN CONSOLIDATED OR A NON-STANDARD UNIT HAS BEEN APPROVED BY THE DIVISION



SCALE: 1"=2000'

<p>GEODETIC COORDINATES NAD 83 NME SURFACE LOCATION Y= 486586.8 N X= 788354.9 E LAT.=32.335164° N LONG.=103.533560° W</p> <p>FIRST TAKE POINT NAD 83 NME Y= 486009.0 N X= 788383.4 E LAT.=32.333575° N LONG.=103.533482° W</p>	<p>GEODETIC COORDINATES NAD 27 NME SURFACE LOCATION Y= 486526.8 N X= 747171.8 E LAT.=32.335040° N LONG.=103.533079° W</p> <p>FIRST TAKE POINT NAD 27 NME Y= 485949.0 N X= 747200.3 E LAT.=32.333451° N LONG.=103.533001° W</p>
--	--

CORNER COORDINATES TABLE

NAD 27 NME

A - Y= 487308.1 N, X= 746842.0 E
B - Y= 487313.9 N, X= 748162.8 E
C - Y= 483348.0 N, X= 746866.4 E
D - Y= 483354.2 N, X= 748188.1 E
E - Y= 478067.4 N, X= 746907.6 E
F - Y= 478074.3 N, X= 748228.8 E

CORNER COORDINATES TABLE

NAD 83 NME

A - Y= 487368.1 N, X= 788025.1 E
B - Y= 487373.9 N, X= 789345.9 E
C - Y= 483407.9 N, X= 788049.6 E
D - Y= 483414.1 N, X= 789371.3 E
E - Y= 478127.1 N, X= 788090.9 E
F - Y= 478134.0 N, X= 789412.2 E

BOTTOM HOLE LOCATION

NAD 83 NME
Y= 478458.9 N
X= 788438.2 E
LAT.=32.312822° N
LONG.=103.533487° W

BOTTOM HOLE LOCATION

NAD 27 NME
Y= 478399.2 N
X= 747254.9 E
LAT.=32.312698° N
LONG.=103.533006° W

OPERATOR CERTIFICATION

I hereby certify that the information herein is true and complete to the best of my knowledge and belief, and that this organization either owns a working interest or unleased mineral interest in the land including the proposed bottom hole location or has a right to drill this well at this location pursuant to a contract with an owner of such mineral or working interest, or to a voluntary pooling agreement or a compulsory pooling order heretofore entered by the division.

Melanie J. Wilson 06/29/2018
Signature Date

Melanie J Wilson

Printed Name

mjp1692@gmail.com

E-mail Address

SURVEYOR CERTIFICATION

I hereby certify that the well location shown on this plat was plotted from field notes of actual surveys made by me or under my supervision, and that the same is true and correct to the best of my belief.

OCTOBER 3, 2017

Date of Survey
Signature of Registered Professional Surveyor:

RONALD J. EIDSON
NEW MEXICO
REGISTERED PROFESSIONAL SURVEYOR
3239
Certificate Number 12641
Ronald J. Eidson 3239
ACK JWSC W.O.: 17.11.0953