

# HOBBS OGD

State of New Mexico  
Minerals & Natural Resources Department  
OIL CONSERVATION DIVISION  
1220 South St. Francis Dr.  
Santa Fe, NM 87505

Form C-102

Revised August 1, 2011

Submit one copy to appropriate  
District Office

**JUL 12 2018**

**RECEIVED**☐ AMENDED REPORT

## WELL LOCATION AND ACREAGE DEDICATION PLAT

<sup>1</sup> API Number 30-025-44966	<sup>2</sup> Pool Code 62700	<sup>3</sup> Pool Name Wantz;Abo	
<sup>4</sup> Property Code 314022	<sup>5</sup> Property Name Encore M State		<sup>6</sup> Well Number 23
<sup>7</sup> OGWD No. 370080	<sup>8</sup> Operator Name Breitburn Operating LP		<sup>9</sup> Elevation 3359'

<sup>10</sup>Surface Location

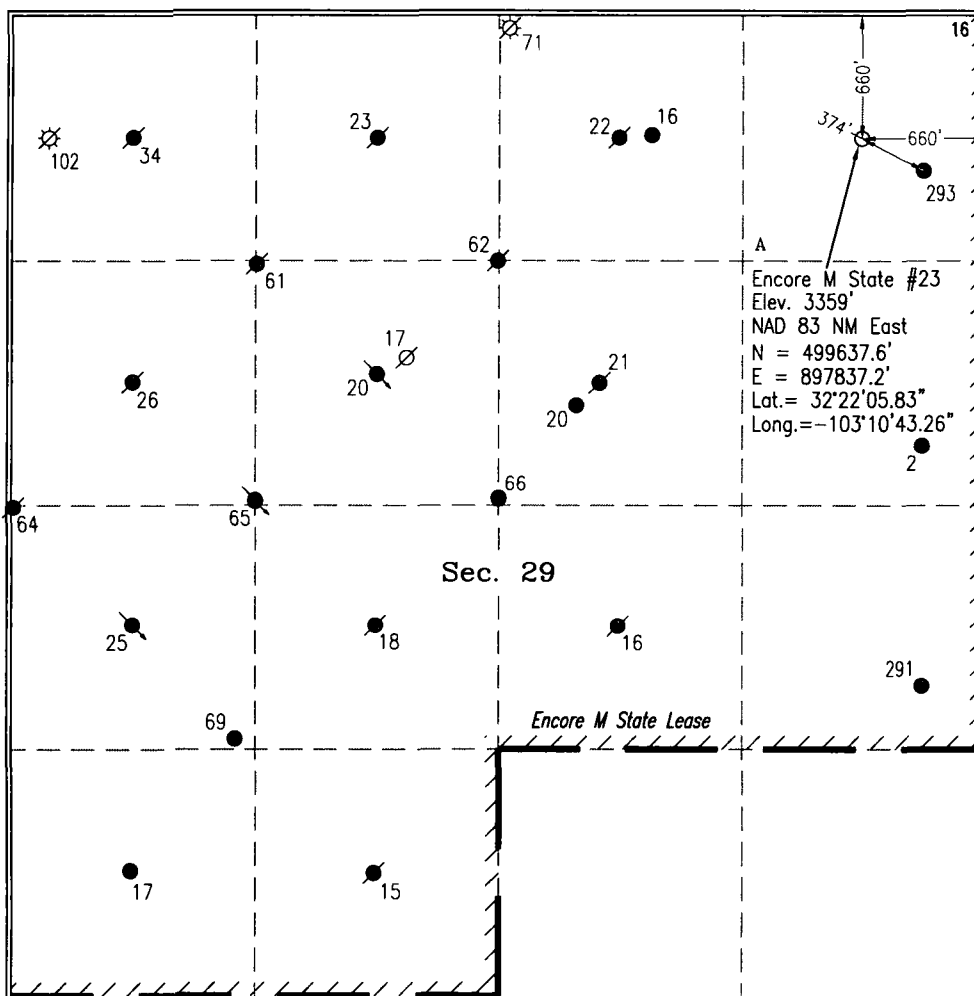
UL or lot no.	Section	Township	Range	Lot Idn	Feet from the	North/South line	Feet from the	East/West line	County
A	29	22 S	37 E		660'	North	660'	East	Lea

<sup>11</sup>Bottom Hole Location If Different From Surface

UL or lot no.	Section	Township	Range	Lot Idn	Feet from the	North/South line	Feet from the	East/West line	County
---------------	---------	----------	-------	---------	---------------	------------------	---------------	----------------	--------

<sup>12</sup> Dedicated Acres	<sup>13</sup> Joint or Infill	<sup>14</sup> Consolidation Code	<sup>15</sup> Order No.
-------------------------------	-------------------------------	----------------------------------	-------------------------

**No allowable will be assigned to this completion until all interests have been consolidated or a non-standard unit has been approved by the division.**



### <sup>17</sup>OPERATOR CERTIFICATION

*I hereby certify that the information contained herein is true and complete to the best of my knowledge and belief, and that this organization either owns a working interest or unleased mineral interest in the land including the proposed bottom hole location or has a right to drill this well at this location pursuant to a contract with an owner of such a mineral or working interest, or to a voluntary pooling agreement or a compulsory pooling order heretofore entered by the division.*

Shelly Doescher 7/10/2018  
Signature Date

**Shelly Doescher**  
Printed Name

shelly\_doescher@yahoo.com  
E-mail Address

## 18 SURVEYOR CERTIFICATION

*I hereby certify that the well location shown on this plat was plotted from field notes of actual surveys made by me or under my supervision, and that the same is true and correct to the best of my belief.*

5-4-2018

Date of Survey

Signature and Seal of Professional Surveyor

10324

**Certificate Number**

